



5020 Chesebro Road, Suite 200, Agoura Hills, CA 91301-2285
Tel. 818-597-3407, Fax 818-597-8001, www.aspeneg.com

PROJECT MEMORANDUM
DOWN'S SUBSTATION EXPANSION PROJECT

To: Eric Chiang, Project Manager, CPUC
From: Vida Strong, Aspen Project Manager
Date: April 4, 2016
Subject: Monitoring Report #64 – March 21 to March 27, 2016

This report provides a summary of the construction and compliance activities associated with the Southern California Edison (SCE) Downs Substation Expansion Project.

A summary of the Notices to Proceed (NTPs) for construction and Minor Project Change (MPC) activities are provided in Tables 1 and 2, respectively (below).

CPUC Environmental Monitor (EM): David DuBois was on site March 22, 2016.

Work Schedule: Work occurred Monday through Wednesday during the subject period.

CPUC NTPs

#1 Downs Substation Expansion Site

NTP #1 was issued on October 22, 2014 for the site preparation, grading, and construction of the Downs Substation expansion, adjacent to the existing Downs Substation on the corner of South Downs Street and West Ridgecrest Boulevard in Ridgecrest. NTP #1 included conditions that had to be satisfied prior to the start of construction.

Summary of Activity:

1. Removal and modification work was completed on components of the original Downs Substation (see Figure 1).
2. The substation expansion area is approximately 97% complete, with some limited paving and demolition work remaining (see Figure 2).
3. Stored materials were mostly removed during the subject week (see Figure 3).
4. The expanded Downs Substation became operational December 3, 2015.
5. 115 kV transformer banks in the expansion area were energized on January 15, 2016.

Environmental Compliance:

1. Landscaping was reviewed by the CPUC EM to confirm conformance with the approved Landscape Plan for the Downs Substation 115 kV Expansion; three Mexican fan palms shown in the plans were not installed because of potential safety risks associated with the trees being positioned below transmission lines along Ridgecrest Boulevard. SCE has notified the City of Ridgecrest of the changes and is requesting their concurrence.
2. Over time, the recently installed shrubs and trees (per the landscaping plan) have begun to show signs of stress. Current irrigation might not be adequate for sustaining certain species (see Figure 4).

3. Storm Water Pollution Prevention Plan Best Management Practices (SWPPP BMPs) were followed appropriately during the subject period.
4. Work areas were clean and free of trash with trashcan lids securely covered.
5. No track-out was observed during the subject period.
6. No dust issues were observed during the subject period.
7. Desert tortoise fencing was appropriately installed during fence installation work. No desert tortoises have been observed at the substation site since the start of construction.

#2 Linear Portion

NTP #2 was issued on February 20, 2015 for the linear portion of the Project which includes 115 kV and fiber optic installations, and substation upgrades. NTP #2 included conditions that had to be satisfied prior to the start of construction.

Summary of Activity:

1. Overhead fiber optic work was completed on September 29, 2016.

Environmental Compliance:

1. On October 8th, SCE requested that the deadline for submitting the final technical report, concerning paleontological monitoring for the project, be extended to December 21, 2015 to allow for the inclusion of radiocarbon dating results. The extension request was approved. On December 17th the Paleontological Resources Monitoring Final Report was submitted to the CPUC. The CPUC provided a detailed review of the report, with recommended corrections, to SCE on January 13, 2016. A revised final report will be submitted in the coming weeks.

Notices to Proceed

Table 1 summarizes the Notices to Proceed (NTP) for the Downs Substation Expansion Project.

Table 1
Notices to Proceed (NTPs)
(Updated 04/04/16)

NTP	Date Requested	Date Issued	Phase	Description
NTP #1	09/04/14	10/22/14	Downs Substation Expansion	Site preparation/grading, installation of substation components in the expanded Down's Substation footprint.
NTP #2	01/27/15	02/20/15	Remainder of the Project	115 kV and fiber optic installations, and substation upgrades.

Minor Project Changes

Table 2 summarizes the Minor Project Changes for the Downs Substation Expansion Project.

Table 2
Minor Project Changes (MPCs)
 (Updated 04/04/16)

MPC	Date Requested	Date Issued	Phase	Description
MPC #1	12/05/14	12/15/14	Downs Substation Expansion	Requests the use of an existing dirt roadway that connects the southwest corner of the work area to Church Avenue.
MPC #2	05/20/15	05/26/15	Downs Substation Expansion	Installation of privacy slats on all chain link fencing encompassing the perimeter of the Downs Substation, including the expansion area.

PROJECT PHOTOGRAPHS



Figure 1 – Crews continued upgrading components of the old Downs Substation during the subject period. View northwest, 03/22/16.



Figure 2 – Some additional structure demolition work is anticipated. View southeast 03/22/16.

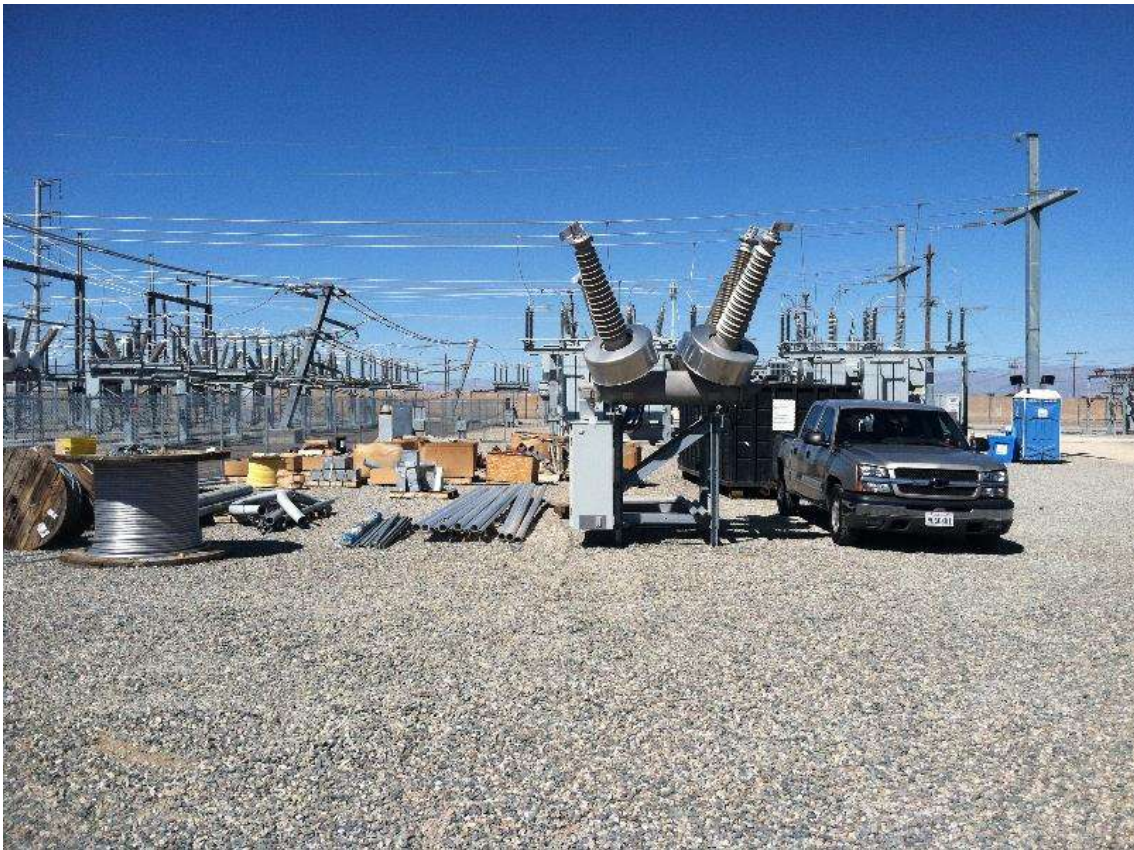


Figure 3 – Stored materials and equipment were removed from the site during the during the subject period. View north, 03/17/16 above, 03/22/16 below.



Figure 4 – Landscaping vegetation is showing signs of stress. View northeast, 03/22/16.