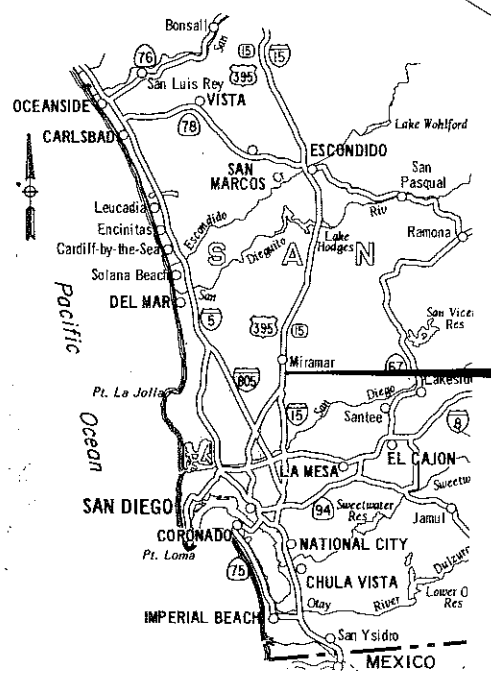
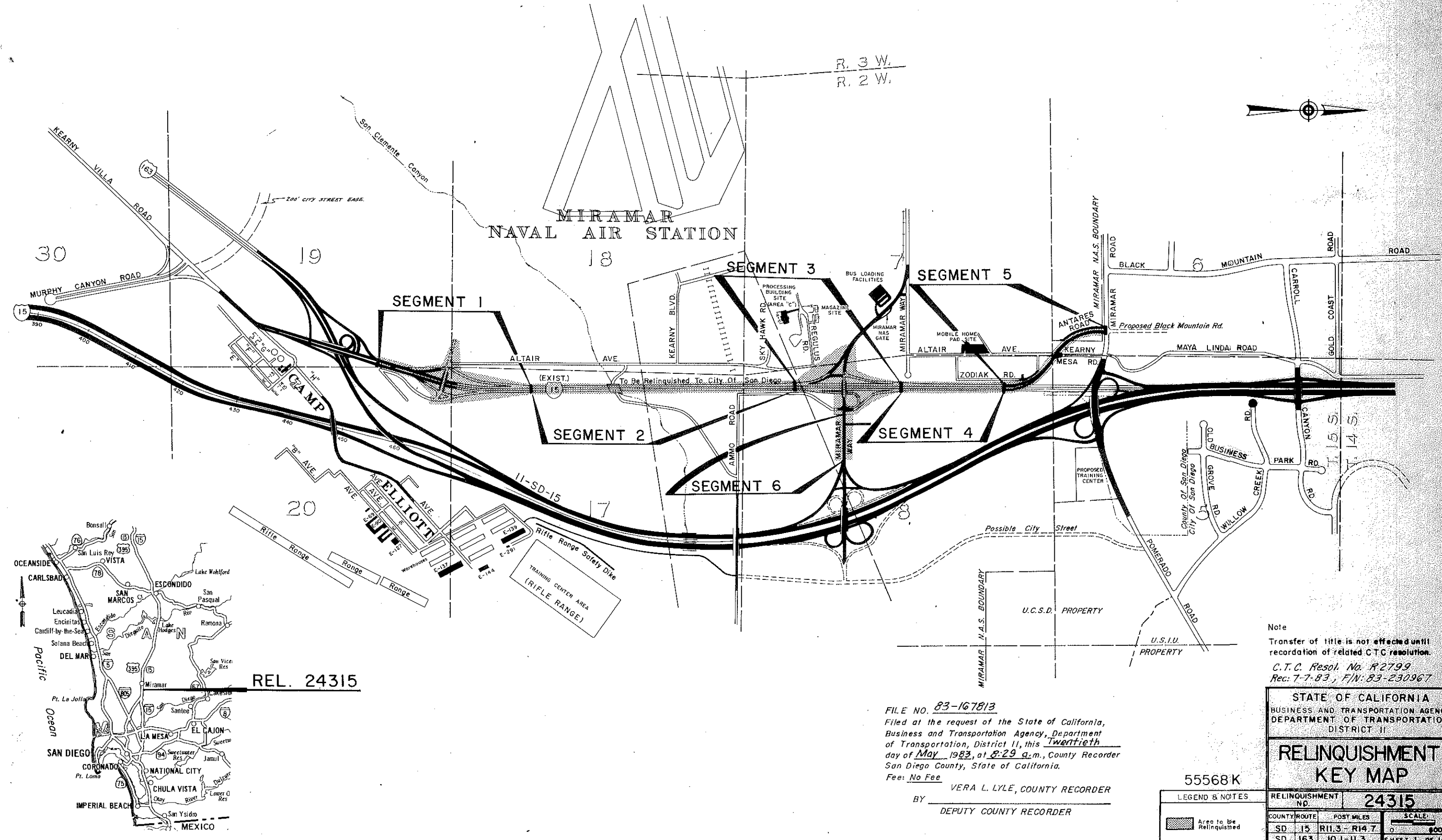


CITY OF SAN DIEGO

A.E. Deitchcock
DISTRICT RIGHT OF WAY ENGINEER, DISTRICT II, PCE 13043



REL. 24315

Note
 Transfer of title is not effected until
 recordation of related CTC resolution.
 C.T.C. Resol. No. R-2799
 Rec: 7-7-83, F/N: 83-230967

FILE NO. 83-167813
 Filed at the request of the State of California,
 Business and Transportation Agency, Department
 of Transportation, District II, this Twentieth
 day of May 1983, at 8:29 a.m., County Recorder
 San Diego County, State of California.
 Fee: No Fee
 VERA L. LYLE, COUNTY RECORDER
 BY _____
 DEPUTY COUNTY RECORDER

STATE OF CALIFORNIA
 BUSINESS AND TRANSPORTATION AGENCY
 DEPARTMENT OF TRANSPORTATION
 DISTRICT II

RELINQUISHMENT KEY MAP

55568K

LEGEND & NOTES	
	Area to be Relinquished

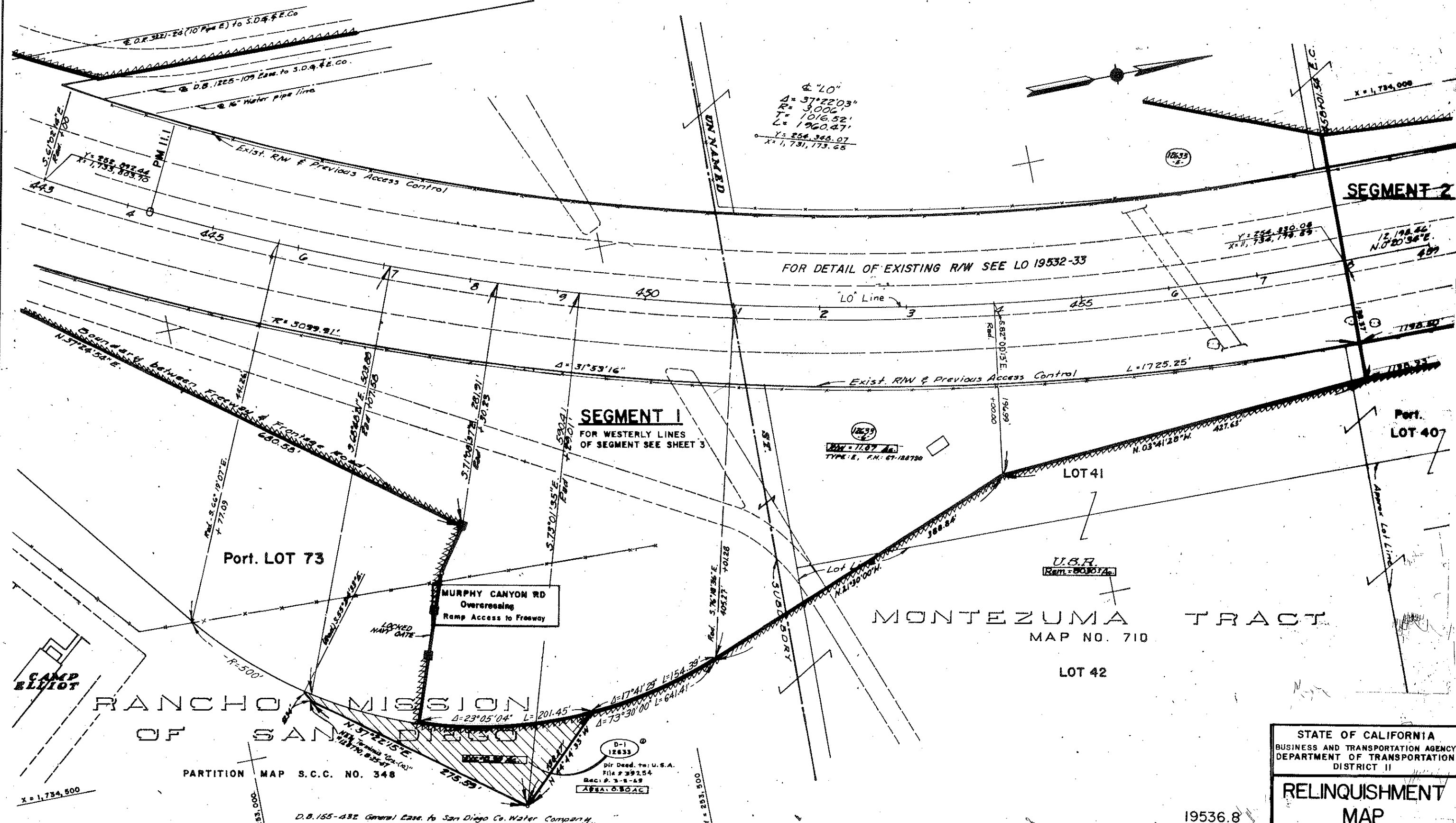
RELINQUISHMENT NO.	24315
COUNTY ROUTE	POST MILES
SD 15	R11.3 - R14.7
SD 163	10.1 - 11.3
SCALE: 1" = 100'	
SHEET 1 OF 14	

CITY OF SAN DIEGO

Alfred S. Sether
DISTRICT RIGHT OF WAY ENGINEER, DISTRICT II, ACE 13042

FOR THIS AREA SEE SHEET 2

FOR THIS AREA SEE SHEET 5



$\Delta = 37^{\circ}22'03''$
 $R = 3006'$
 $T = 1016.52'$
 $L = 1960.47'$
 $Y = 254,346.07$
 $X = 1,731,173.65$

SEGMENT 1
 FOR WESTERLY LINES
 OF SEGMENT SEE SHEET 3

12633
 REM = 11.07
 TYPE: E, F.N.: 67-188790

U.S.R.
 Rem = 803074

D-1
 12633
 Div. Deed. to: U.S.A.
 File # 39254
 Rec. # 3-8-69
 AREA: 0.80 AC

STATE OF CALIFORNIA
 BUSINESS AND TRANSPORTATION AGENCY
 DEPARTMENT OF TRANSPORTATION
 DISTRICT II

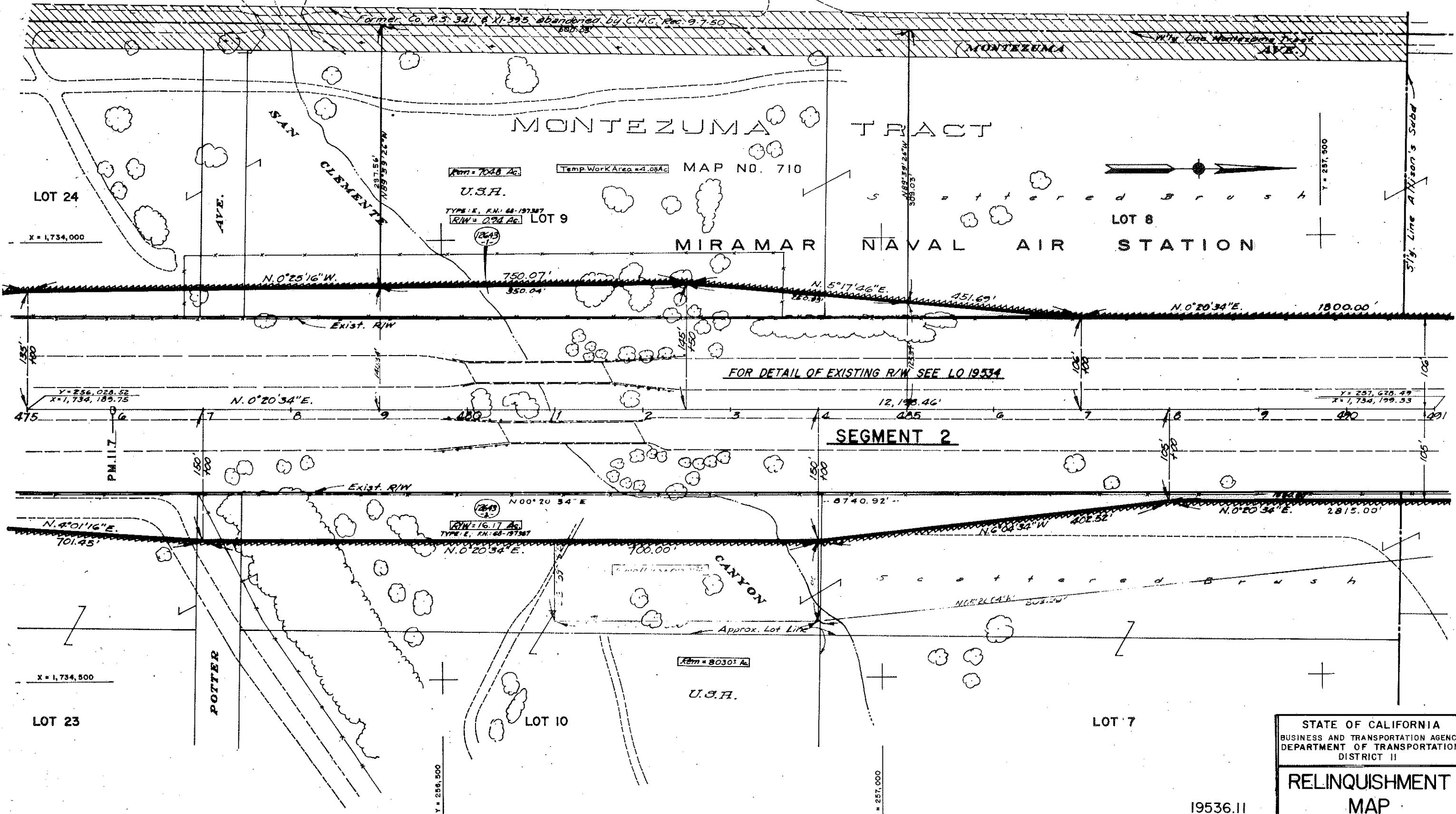
RELINQUISHMENT MAP

19536.8		24315	
LEGEND & NOTES			
	Access Denied		
	Area to be Relinquished		
	Access Relinquished		
COUNTY	ROUTE	POST MILES	SCALE
SD	15	11.1	0 50'
			SHEET 4 OF 14

D.B. 155-482 General Eas. to San Diego Co. Water Company.

CITY OF SAN DIEGO

Al Detrick
DISTRICT ENGINEER OF HIGHWAY ENGINEERS, DISTRICT II, RCE 13042



STATE OF CALIFORNIA
BUSINESS AND TRANSPORTATION AGENCY
DEPARTMENT OF TRANSPORTATION
DISTRICT II

RELINQUISHMENT MAP

19536.11

LEGEND & NOTES

-----	Access Denied
-----	Area to be Relinquished
-----	Access Relinquished

RELINQUISHMENT NO.	24315	
COUNTY/ROUTE	POST MILES	SCALE
SD 15	11.7	0 30'
SHEET 6 OF 14		

CITY OF SAN DIEGO

Al G. Gethers
DISTRICT RIGHT OF WAY ENGINEER, DISTRICT II, RCE 13042

Former Co. R.S. 341 & XI-595 abandoned by C.H.C. Rec. 9-7-50

SUBD. BDRY. Pkto Lot Line 8 & abandoned by X-3-341

MONTEZUMA TRACT

MAP NO. 710

MIRAMAR NAVAL AIR STATION

U.S.H.
Rem = 7480⁰⁰ Ac.

LOT 25

Scattered Brush

TYPE: E, F.N.: 68-128790
R/W = 5.33 Ac.

TYPE: E, F.N.: 88-197387
R/W = 0.94 Ac.

LOT 40

AVE.

LOT 24

X = 1,734,000

N. 2° 07' 55" E.

1249.07'

Myterminus of Crs. (6)
249.07' Inst. 128790
Aug. 25th, 1947

Y = 255,879.180
X = 1,734,081.048

N. 3° 20' 53" W.

450.94'

PM 11.4

1248.50'

Exist. R/W & Previous Access Control

FOR DETAIL OF EXISTING R/W SEE LO 19533

Y = 254,428.55
X = 1,734,180.18

N. 0° 20' 34" E.

12,198.46'

Y = 256,028.32
X = 1,734,185.75

459

460

1

2

3

4

465

6

7

8

9

470

1

2

3

4

475

SEGMENT 2

1198.50'

Exist. R/W & Previous Access Control

11.00' 589° 39' 26" E

N. 00° 20' 34" E

8740.92'

N. 1° 15' 10" W.

1198.93'

Myterminus of Crs. (6)
1100' Inst. 128790
Aug. 25th, 1947

Y = 255,527.899
X = 1,734,291.753

R/W = 16.17 Ac.
TYPE: E, F.N.: 88-197387

701.45'

U.S.H.

R/W = 9.35 Ac.
TYPE: E, F.N.: 68-128790

Approx. Lot Lines

Scattered Brush

Rem = 8030⁰⁰ Ac.

JOSEPHINE

LOT 39

LOT 26

LOT 23

X = 1,734,800

STATE OF CALIFORNIA
BUSINESS AND TRANSPORTATION AGENCY
DEPARTMENT OF TRANSPORTATION
DISTRICT II

RELINQUISHMENT MAP

19536.10

LEGEND & NOTES

Access Denied
Area to be Relinquished
Access Relinquished

RELINQUISHMENT NO. 24315

COUNTY ROUTE POST MILES SCALE
SD 15 11.4 0 50
SHEET 5 OF 14

Al Dethlefs
DISTRICT RIGHT OF WAY ENGINEER, DISTRICT II, 1942

CITY OF SAN DIEGO

T. 15 S., R. 2 W., S.B.M.

FOR PREVIOUS R/W SEE L.O. 19536.7 & 19536.8

EXIST. 11-SD-163

SEGMENT I

STATE HIGHWAY MAP NO. 227

RANCHO MISSION OF SAN DIEGO

PARTITION OF SCC 348

LOT 73

W/4 Rem. 2 of 3 = 340.85 Ac.

SEC. 20

MIRAMAR NAVAL AIR STATION

(21580-1)
Ref. - See L.O. 55574 (11-SD-15)

STATE OF CALIFORNIA
BUSINESS AND TRANSPORTATION AGENCY
DEPARTMENT OF TRANSPORTATION
DISTRICT II

RELINQUISHMENT MAP

19536.71

LEGEND & NOTES

- Access Denied
- Area to be Relinquished
- Access Relinquished

RELINQUISHMENT NO.

24315

COUNTY ROUTE

SD 163

POST MILES

10.9

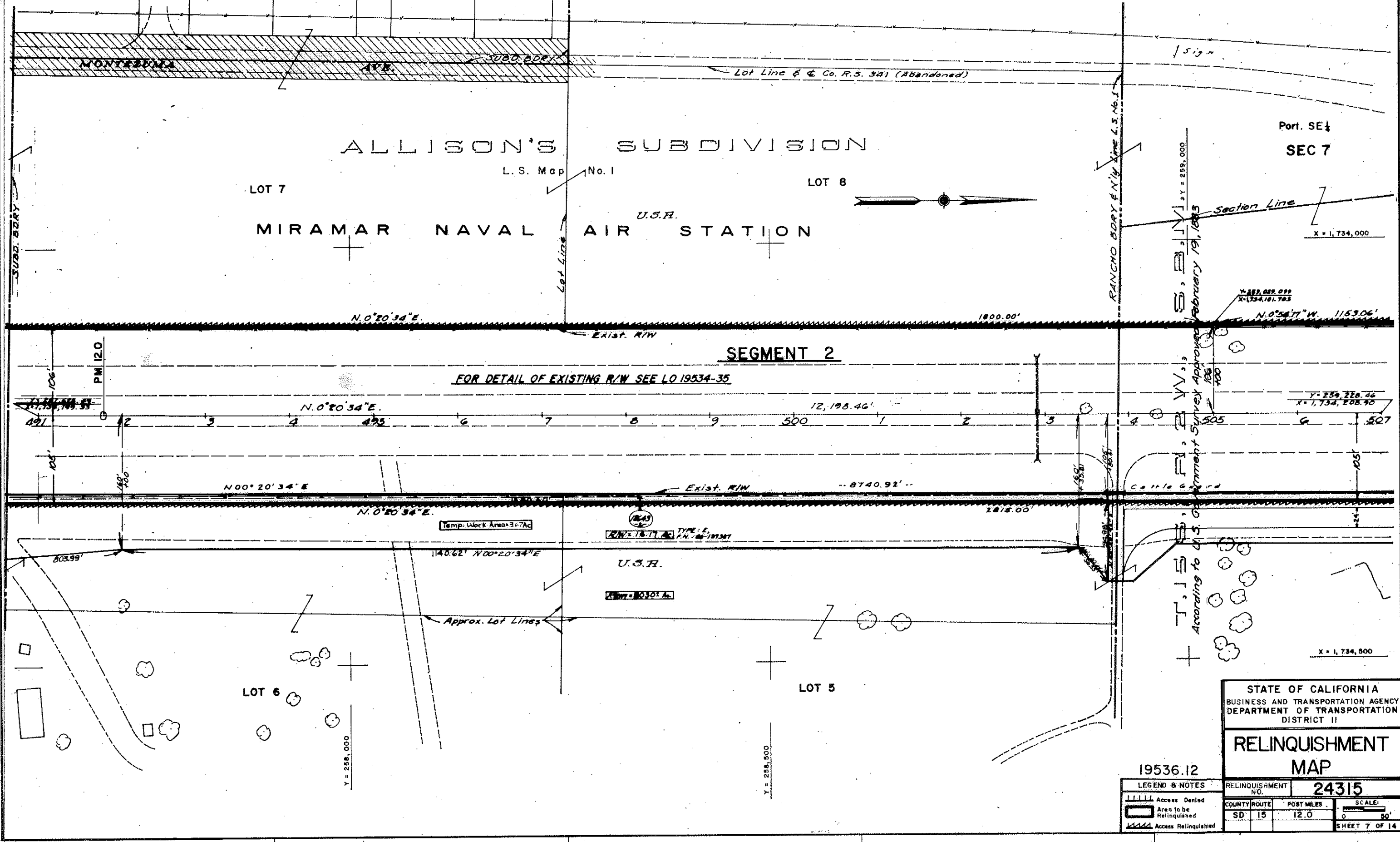
SCALE:

0 90'

SHEET 2 OF 14

FOR THIS AREA SEE SHEET 4

CITY OF SAN DIEGO



STATE OF CALIFORNIA
BUSINESS AND TRANSPORTATION AGENCY
DEPARTMENT OF TRANSPORTATION
DISTRICT II

RELINQUISHMENT MAP

19536.12

LEGEND & NOTES

- Access Denied
- Area to be Relinquished
- Access Relinquished

RELINQUISHMENT NO.	24315
COUNTY ROUTE	15
POST MILES	12.0
SCALE:	0 50'
SHEET 7 OF 14	

FOR REVISED LO'S, SEE 19536.61, 19536.71, 19536.72

CITY OF SAN DIEGO

A. E. Hedrick
DISTRICT ENGINEER OF SAN DIEGO, DISTRICT II, CALIF. 1946

RANCHO MISSION OF SAN DIEGO

PARTITION MAP S.C.C. NO. 348

U.S.H.

X = 1,733,500

Port. LOT 72

R.O.S. 1000

Area = 7480 Ac.

EXHIBIT

MIRAMAR NAVAL AIR STATION



MONTEZUMA TRACT

MAP NO. 710

LOT 41

LOT 40

SEGMENT 2

X = 1,734,000

SEGMENT 1

FOR EASTERLY LINES OF SEGMENT
SEE SHEETS 2 AND 4

12633
R/W = 5.33 Ac.
TYPE: E, F.N.: 68-206200, FIRST
MODIFICATION/ACCESS RIGHTS
TYPE: E, F.N.: 67-78790 ACCESS RIGHTS
U.S.H.

STATE OF CALIFORNIA
BUSINESS AND TRANSPORTATION AGENCY
DEPARTMENT OF TRANSPORTATION
DISTRICT II

RELINQUISHMENT MAP

19536.9

LEGEND & NOTES

- Access Denied
- Area to be Relinquished
- Access Relinquished

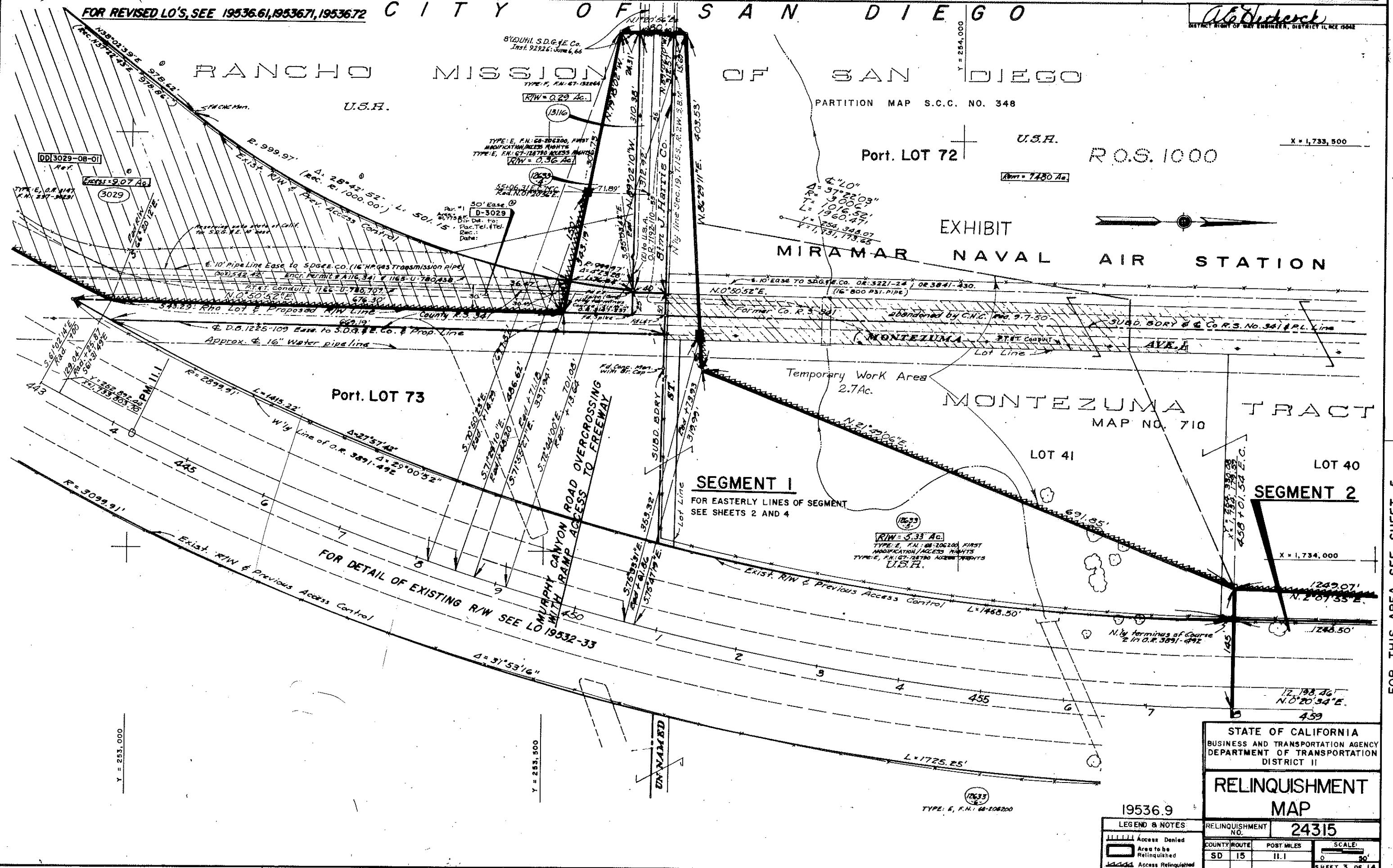
RELINQUISHMENT NO.	24315	
COUNTY/ROUTE	POST MILES	SCALE
SD 15	11.1	0 50'

SHEET 3 OF 14

FOR THIS AREA SEE SHEET 2

FOR THIS AREA SEE SHEET 5

FOR THIS AREA SEE SHEETS 2 AND 4



CITY OF SAN DIEGO

A. E. Decker
DISTRICT RIGHT OF WAY ENGINEER, DISTRICT 14, ACE 15042



FOR DETAIL OF EXISTING R/W SEE LO. 19535

FOR DETAIL OF EXISTING R/W SEE LO. 19536

SEGMENT 2

SEGMENT 3

SEGMENT 6

SEE SHEET 14

MIRAMAR WAY INTERCHANGE
With Ramp Access To Freeway

United States of America
Rem. 8050 AC.

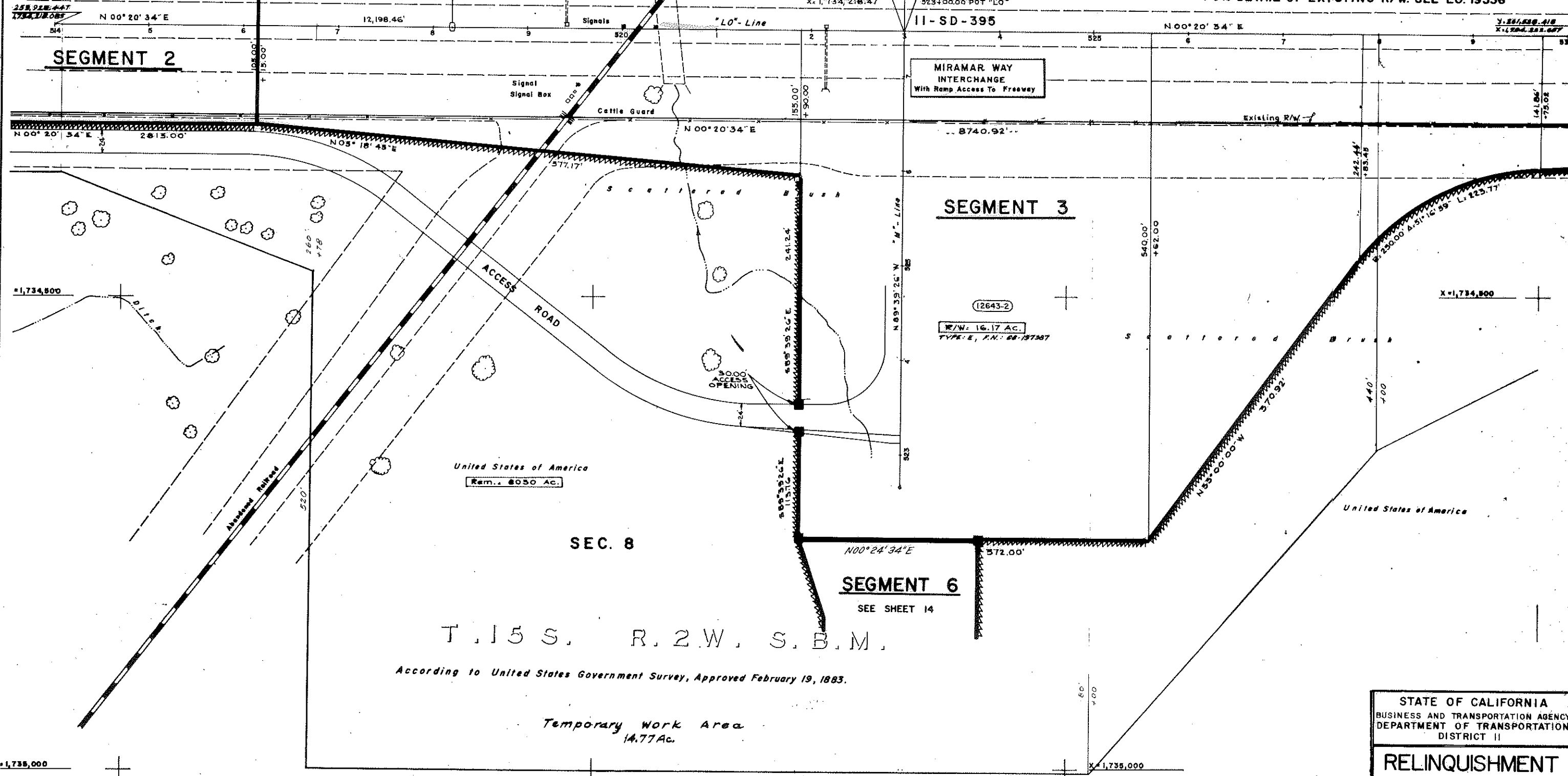
United States of America

SEC. 8

T. 15 S. R. 2 W. S. B. M.

According to United States Government Survey, Approved February 19, 1883.

Temporary Work Area
14.77 Ac.



STATE OF CALIFORNIA
BUSINESS AND TRANSPORTATION AGENCY
DEPARTMENT OF TRANSPORTATION
DISTRICT II

RELINQUISHMENT MAP

19536.13A

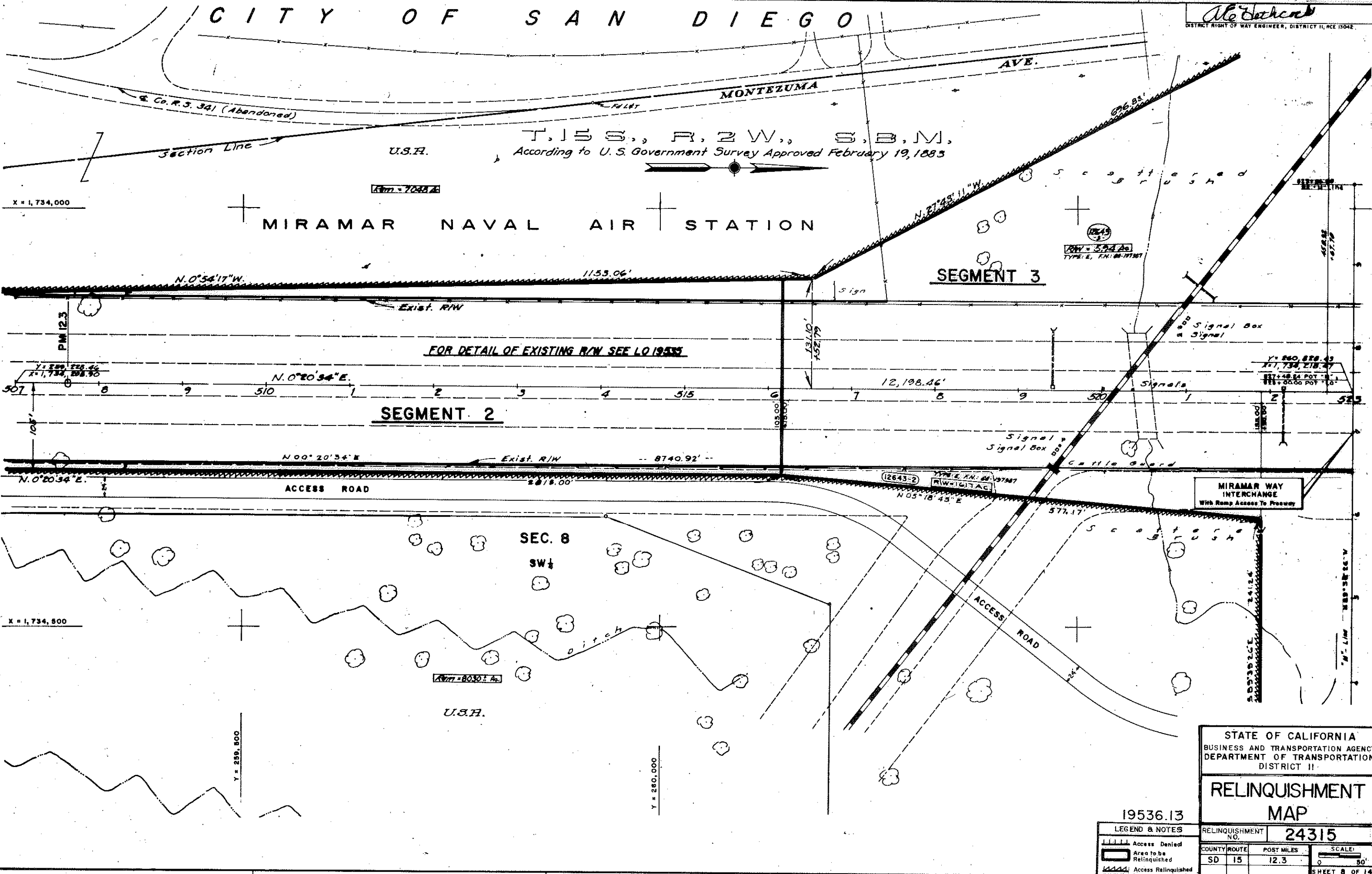
LEGEND & NOTES

- Access Denied
- Area to be Relinquished
- Access Retained

RELINQUISHMENT NO.	24315	
COUNTY ROUTE	POST MILES	SCALE
SD 15	12.5	0 30 60

CITY OF SAN DIEGO

McHadden
DISTRICT RIGHT OF WAY ENGINEER, DISTRICT II, PCE 13042



STATE OF CALIFORNIA
BUSINESS AND TRANSPORTATION AGENCY
DEPARTMENT OF TRANSPORTATION
DISTRICT II

RELINQUISHMENT MAP

19536.13

LEGEND & NOTES

- Access Denied
- Area to be Relinquished
- Access Relinquished

RELINQUISHMENT NO.	24315	
COUNTY ROUTE	SD 15	POST MILES 12.3
SCALE:	0 50'	
SHEET 8 OF 14		

Al Dethlefs
DISTRICT RIGHT OF WAY ENGINEER, DISTRICT II, RCE 13042

CITY OF SAN DIEGO

T. 15 S., R. 2 W., S. B. M. SEC. 8
According to U.S. Government Survey Approved February 19, 1883

MIRAMAR NAVAL AIR STATION

U.S.R.

SW 1/4

NW 1/4

X = 1,734,000

parking Area

MIRAMAR WAY (Abandoned by Co.)
Approx. 1/2 Section Line

Temporary Work Area
6.12 Ac.

Exist. R/W & Previous Access Control

FOR DETAIL OF EXISTING R/W SEE LO 19536

Exist. R/W & Previous Access Control

Temporary Working Area
14.77 Ac.

Rem. 8030± AC.
U.S.R.

SEGMENT 3

SEGMENT 4

PM 12.6

Y = 260,828.43
X = 1,734,218.47
327± 48.24 POT "H"
825 ± 00.00 POT "L"

MIRAMAR WAY INTERCHANGE
With Ramp Access to Freeway

STATE OF CALIFORNIA
BUSINESS AND TRANSPORTATION AGENCY
DEPARTMENT OF TRANSPORTATION
DISTRICT II

RELINQUISHMENT MAP

19536.14

RELINQUISHMENT NO. 24315

LEGEND & NOTES	
	Access Denied
	Area to be Relinquished
	Access Relinquished

COUNTY	ROUTE	POST MILES	SCALE
SD	15	12.6	0 30'
			SHEET 10 OF 14

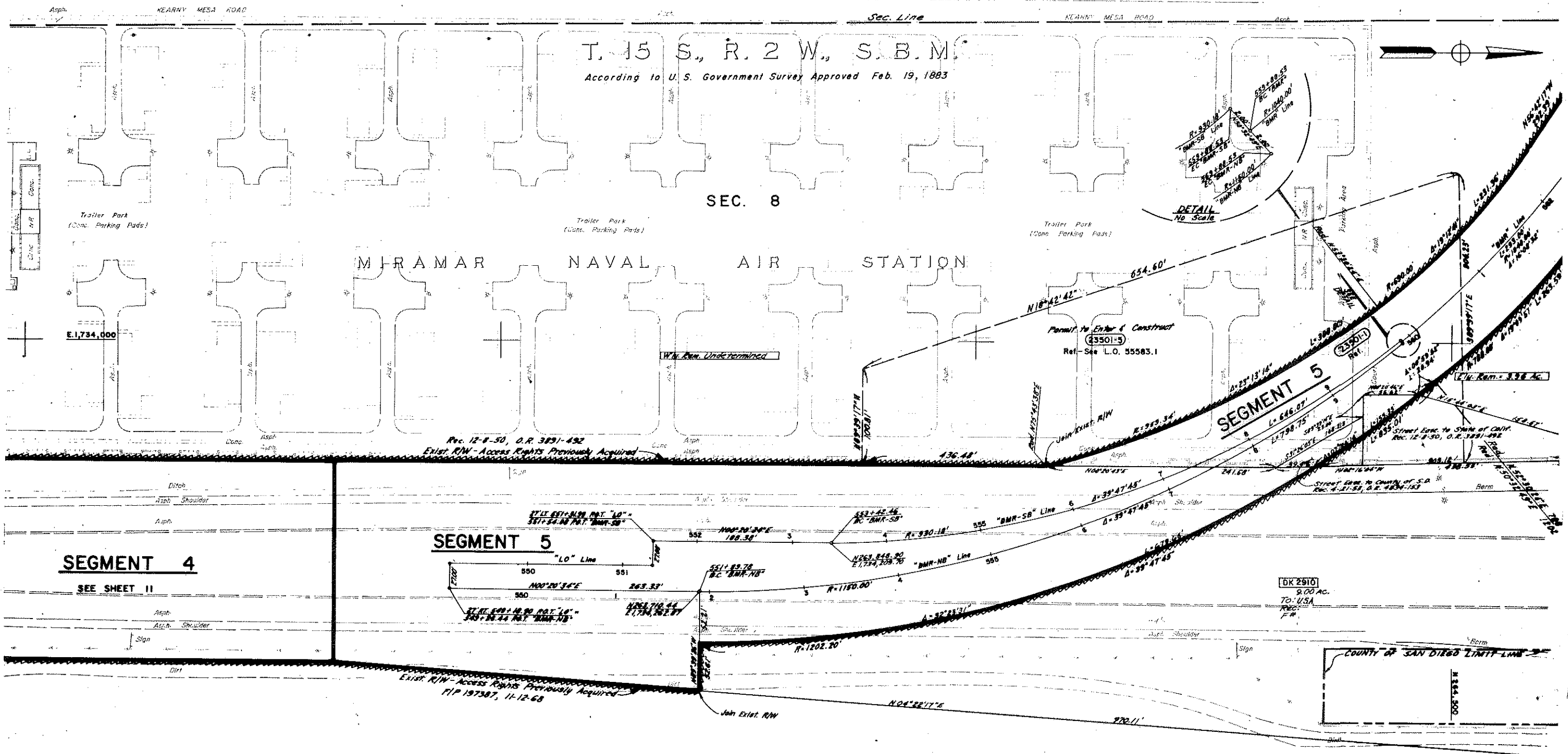
CITY OF SAN DIEGO

McVethcock
DISTRICT RIGHT OF WAY ENGINEER, DISTRICT II, RCE 13042

T. 15 S., R. 2 W., S.B.M.
According to U.S. Government Survey Approved Feb. 19, 1883

SEC. 8

MIRAMAR NAVAL AIR STATION



SEGMENT 4

SEE SHEET 11

SEGMENT 5

SEGMENT 5

COUNTY OF SAN DIEGO LIMIT LINE

STATE OF CALIFORNIA
BUSINESS AND TRANSPORTATION AGENCY
DEPARTMENT OF TRANSPORTATION
DISTRICT II

RELINQUISHMENT
MAP

55583

LEGEND & NOTES

- Access Denied
- Area to be Relinquished
- Access Relinquished

RELINQUISHMENT NO.	24315
COUNTY ROUTE	SD 15
POST MILES	R13.1
SCALE	0 50'
SHEET 12 OF 14	

E. 1,734,800

N. 283,500

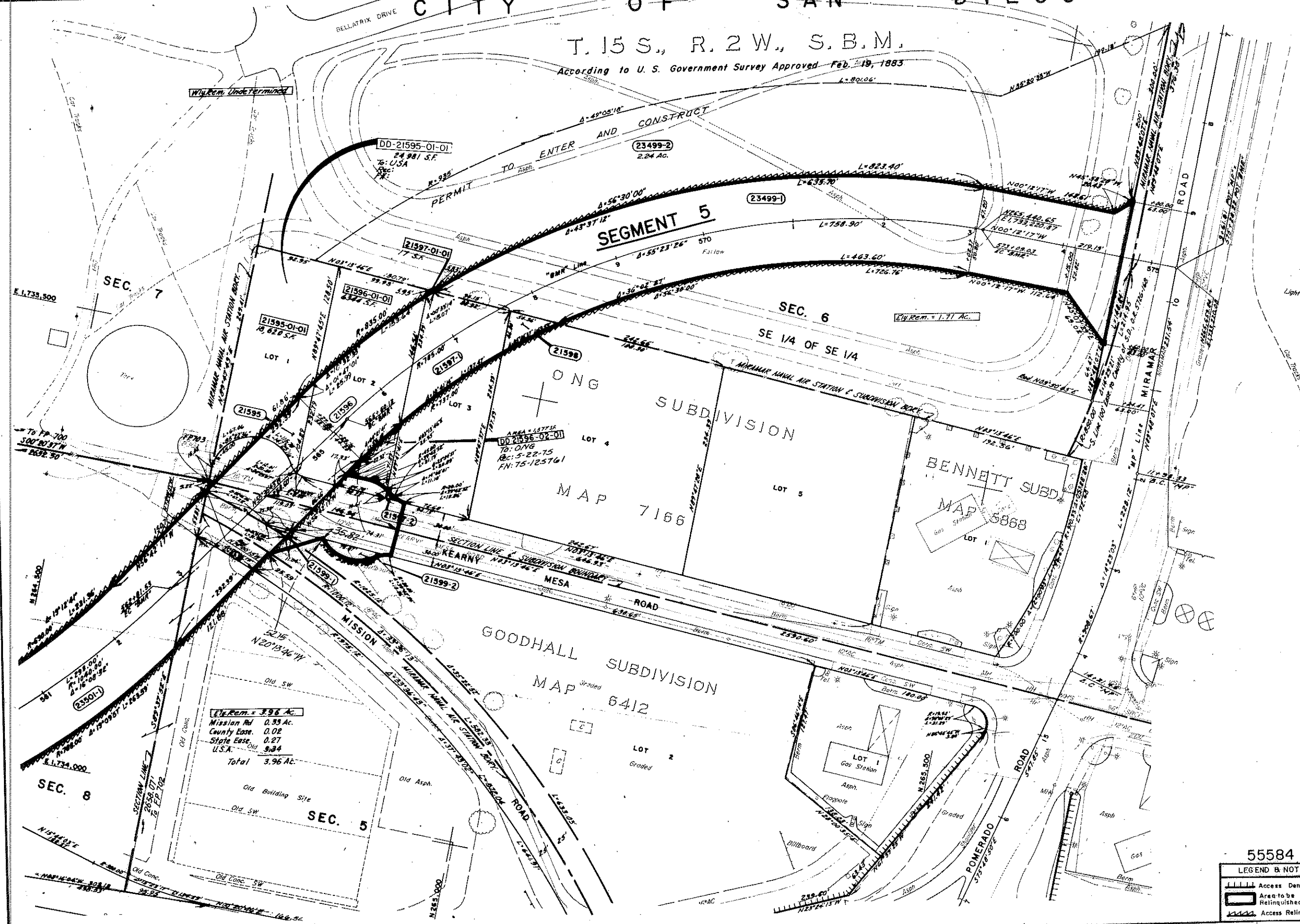
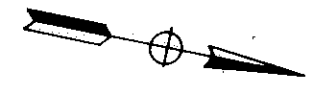
N. 264,000

3000

CITY OF SAN DIEGO

Al Dehecock
DISTRICT RIGHT OF WAY ENGINEER, DISTRICT II, REC 13042

T. 15 S., R. 2 W., S.B.M.
According to U. S. Government Survey Approved Feb. 19, 1883



STATE OF CALIFORNIA
BUSINESS AND TRANSPORTATION AGENCY
DEPARTMENT OF TRANSPORTATION
DISTRICT II

RELINQUISHMENT MAP

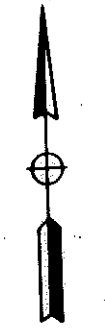
55584		RELINQUISHMENT NO. 24315	
LEGEND & NOTES		COUNTY ROUTE	POST MILES
Access Denied Area to be Relinquished Access Relinquished	SD 15	R13.4	SCALE: 0 50'
			SHEET 13 OF 14

CITY OF SAN DIEGO

T. 15 S., R. 2 W., S. B.M.

According to U. S. Government Survey Approved Feb. 19, 1883

W. S. Sutherland
DISTRICT RIGHT-OF-WAY ENGINEER, DISTRICT II, ACE 1044



SEGMENT 3
SEE SHEET 9

MATCH LINE
See Below

Permit to Enter & Construct
(21580-B)
Ref. - See L.O. 55576

W/U. Rem. 3 of 3 = 93.12 Ac.

SEC. 8
SW 1/4

SEGMENT 6

(21580-I)
Ref. - See L.O. 55574

MIRAMAR WAY

Permit to Enter & Construct
(21580-II)
Ref. - See L.O. 55576

MIRAMAR NAVAL AIR STATION

STATE OF CALIFORNIA
BUSINESS AND TRANSPORTATION AGENCY
DEPARTMENT OF TRANSPORTATION
DISTRICT II

RELINQUISHMENT MAP

55579

LEGEND & NOTES

- Access Denied
- Area to be Relinquished
- Access Relinquished

RELINQUISHMENT NO. **24315**

COUNTY ROUTE POST MILES
SD 15 R12.4

SCALE
0 40'
SHEET 14 OF 14

