

SDG&E SALT CREEK SUBSTATION PROJECT

CPUC MONITORING SUMMARY REPORT

November, 2016

PURPOSE

This report provides a summary of construction and environmental compliance activities that were documented during the month of November 2016 for the San Diego Gas and Electric (SDG&E) Salt Creek Substation Project as described in the Final Environmental Impact Report (FEIR) and Mitigation Monitoring Compliance and Reporting Program (MMCRP) developed for the project.

SUMMARY OF CONSTRUCTION ACTIVITIES

Construction activities during this reporting period included:

- **Developing site surfaces.** Conducting earthwork, installation of additional BMPs, preparation of slopes around the bio-retention basin and the masonry wall. Placement of vaults in front of the substation, water tie-in on Hunte Parkway for project fire hydrant, excavation and concrete formwork for oil catch basin. The below grade contractor (Suffolk) is building pads in the substation area.
- **Wall and fencing construction.** Application of water proofing on the masonry wall, installation of fencing along Access Road A.
- **Electrical work.** Trenching and concrete pour for 12kV and 69kV conduit.
- **Road work.** Curb and gutter work on Access Road A, asphalt paving on Hunte Parkway.

SUMMARY OF COMPLIANCE ACTIVITIES

Panorama staff conducted site visits on November 1st, 4th, 8th, 16th, 17th, 18th, 21st, and 29th. The Daily Inspection Reports for the site visits are available in Attachment A. SDG&E summarized their environmental compliance activities in their Weekly Compliance Reports, which are provided in Attachment B. No incidents were reported by the CPUC and five reported by SDG&E. The total record of incidents for the reporting period is provided in Table 1 below.

CPUC MONITORING SUMMARY REPORT

Table 1: Record of Incidents

Incident Level	CPUC Period Total	CPUC Project Total	SDG&E Period Total	SDG&E Project Total
Level 1: Occurrence	0	5	5 ¹	22 ¹
Level 2: Minor Problem	0	3	0	4
Level 3: Compliance Issue	0	1	0	0
Level 4: Noncompliance	0	0	0	0
Total	0	9	5 ¹	26 ¹
Safety Incidents				
Personnel and Contractors	0	0	0	0
Public Complaints				
Received by	0	0	0	0

¹SDG&E reports minor fluid leaks as Level 1 Occurrences

Air Quality

Water trucks were used to control dust during earth moving activities. No winds occurred that were higher than 20 mph and no visible dust was recorded. Stockpiles on site were moved within the future battery storage area, and all pavement was kept clean during this monitoring period. Vehicle and equipment logs were maintained.

Biological Resources

Construction occurred within the project limits of disturbance. No special-status species were observed during the monitoring period.

Cultural and Paleontological Resources

Cultural and Native American monitors were not on site during construction activities, because the excavation was only occurring within fill material and native material previously graded to at least 10-feet below the surface, where the potential for cultural or archeological resources was extremely low. The paleontological monitor was on site during this reporting period, except on November 5th, as there were no trenching or excavation activities occurring on that day. No paleontological or cultural findings were made during this reporting period.

Hazardous Materials and Waste

Fueling was conducted in appropriate areas, and equipment and vehicles were checked for leaks.

On November 8th, one-half cup of fuel spilled onto the soil. The soil was removed and placed in a 55-gallon barrel. SDG&E recorded this as a Level 1 Occurrence.

CPUC MONITORING SUMMARY REPORT

On November 9th, one cup of hydraulic fluid spilled onto class II base rock in the substation pad area. The stained rock was removed and placed in a 55-gallon metal barrel. SDG&E recorded this as a Level 1 Occurrence.

On November 15th, a skip loader had a hydraulic hose break; the spill was 1 to 2 quarts of hydraulic fluid that sprayed onto the soil. The spill was contained with drip pans and absorbent pads. The stained soil was removed and placed in a 55-gallon metal barrel. SDG&E recorded this as a Level 1 Occurrence.

On November 21st, a loaded cement truck driving along the project's access road skidded due to the slick condition of the road from precipitation, causing the rear end of the truck to veer off the road by approximately 5 to 6 feet onto the road's shoulder. To stabilize the cement truck, the cement slurry was off-loaded into the buckets of front loaders and brought onto the project site. Once the cement slurry was unloaded, the front loader pulled the truck forward approximately 5 to 6 feet so that the back end of the truck was returned to the road. Although the truck slid onto the shoulder next to vegetation, no damage to any vegetation occurred. Additional base rock was added to the access road to prevent future incidents. SDG&E recorded this as a Level 1 Occurrence.

Noise

The hours of site activity were limited to 7:00 a.m. to 7:00 p.m. on Monday through Friday and to 8:00 a.m. to 4:30 p.m. on Saturday. There was no construction on November 11th, 24th, 25th, or 26th. No noise complaints were received.

Traffic and Transportation

The traffic control plan approved by the City of Chula Vista was implemented and general traffic measures were adhered to. The majority of project personnel are parking their personal vehicles within designated personal vehicle parking areas within the project limits.

Storm Water Compliance

During this reporting period, the project Stormwater Pollution Prevention Plan (SWPPP) and soil and erosion control best management practices (BMPs) were maintained in accordance with the SDG&E Water Quality Construction BMP Manual. Permanent slopes within the project site were sprayed with BFM during the week of October 10th through October 15th and on October 27th, and November 14th. The Qualified SWPPP Practitioner inspected the site on November 2nd, 9th, 16th, 21st, 22nd, and 23rd for weekly and rain inspections. No deficiencies were recorded. On November 21st, additional BMPs were installed around an exposed spoil pile situated adjacent to the fire hydrant trench, and all hard surfaces were swept of loose soil and debris. In preparation for the November 26th rain, all spoil piles were removed and or situated within the masonry wall area of the substation pad area. Roads were swept of loose soil and debris, and additional BMPs (wattle logs) were added where needed.

CPUC MONITORING SUMMARY REPORT

On November 1st, the inactive recycled water pipeline broke, and the water rose to the soil surface. The main valve for the pipeline was immediately shut off upon discovery of the leaking water. Approximately 150 gallons of water spread across the soil and asphalt surfaces. The water on the soil surface was absorbed and the water on the asphalt flowed downhill and into the v-ditch located within the eastern side of the project. The sand bag check dams contained the water so that no water exited the site. The broken pipeline was removed from service. A courtesy notice was sent to the Regional Water Quality Control Board and the City of Chula Vista on November 4th. SDG&E recorded this as a Level 1 Occurrence.

Worker Environmental Awareness Program

Approximately 50 personnel attended the supervisor-level WEAP/SWPPP/FIRE Training on June 24th, and approximately 307 project personnel have received the training on site. All attendees received a hard-hat sticker proving completion of the training, which is being worn at all times while on-site.

RECORD OF MMCRP REQUESTS AND AUTHORIZATIONS

Notice to Proceed (NTP)

NTP Number	Date Requested	Date Authorized	Description
1	06/10/2016	06/21/2016	The NTP was issued with the conditions that SDG&E shall submit and address CPUC comments on the Landscape and Irrigation Plan and Temporary Impact Restoration Plan no less than 120 days prior to acquisition of landscape materials, and the Spill Prevention, Control, and Countermeasure Plan be complete at least 30 days prior to transformer installation. The Special-Status Plant Mitigation will be revised and implemented to the satisfaction of the CPUC.

Minor Project Refinements (MPRs)

MPR Number	Date Requested	Date Authorized	Description
1	7/12/2016	7/15/2016	MPR#1 modified the approved project by increasing the limits of disturbance by 0.55 acres in the northwest corner of SDG&E's property, adjacent to Hunte Parkway. SDG&E proposed MPR #1 to allow for easier mobility within the northwest corner for installation of the temporary construction fence, as well as allow for the permanent underground connection of the recycled water service lateral and the fire water service lateral. The change in LOD also allowed for the temporary recycled water high line for construction.
2	8/19/2016 Revised 9/02/2016	9/06/2016	MPR #2 modified the project by increasing the limits of disturbance by 0.16 acres in the east portion of SDG&E's property within SDG&E's transmission corridor. SDG&E proposed MPR #2 to allow for additional parking closer to the substation perimeter gate, once the Hunte Parkway parking is inaccessible during the construction of the access road to Hunte Parkway.
3	8/23/2016	8/25/2016	MRP #3 modified the approved project by increasing the limits of disturbance by 0.01 acre in the east portion of SDG&E's property and within the SDG&E transmission corridor. SDG&E proposed MPR #3 to allow trucks that are dropping off imported soil to turn from the SDG&E's existing access road within the transmission corridor onto the SDCWA access road within the substation property. Due to the high frequency of trucks arriving from the SDG&E access road (twelve trucks per hour), it was necessary that there was a safe location for the trucks to turn onto the SDCWA access road.
4	10/21/2016		It was determined MPR #4 was not required.

CPUC MONITORING SUMMARY REPORT

MPR Number	Date Requested	Date Authorized	Description
5	10/20/2016	10/21/2016	MRP #5 modified approved MPR #1 by changing the fire service lateral line location to improve the structural stability of the line. The new location of the fire service lateral line is approximately 100 feet northeast of the original location that was approved through MPR #1. The new location crosses the property boundary closer to the transmission corridor within the installed temporary construction fence.

CPUC MONITORING SUMMARY REPORT

ATTACHMENT A

CPUC DAILY INSPECTION REPORTS

2016-10-28 Inspection Report



SDG&E Salt Creek Substation Project: Daily Inspection Report

Inspection Date	2016-11-01
Start Time	07:00:00
End Time	23:42:00
Monitor Name	Dave Flietner
Organization	The Sanberg Group (Sanberg)
Summary of Construction Activities	Digging holes for vaults, constructing wall, and various grading and building work were the main activities.
Summary of Compliance Activities	LEI and paleo monitor were present. No compliance issues arose.
Were any issues encountered?	No

Photo Log

Photo



Caption Wall construction overview.

Photo Attributes Capture Date/Time: Tue Nov 01 2016 11:01:48 GMT+0500 (GMT+05:00)

Coordinates: 32.61959, -116.947871

View Direction: West

Photo



Caption Paleo monitor observes excavation.

Photo Attributes Capture Date/Time: Tue Nov 01 2016 10:44:02 GMT+0500 (GMT+05:00)

Coordinates: 32.619772, -116.948864

View Direction: Northwest

Photo



Caption Wall construction

Photo Attributes Capture Date/Time: Tue Nov 01 2016 08:43:07 GMT+0500 (GMT+05:00)

Coordinates: 32.619609, -116.949186

View Direction: North

Photo



Caption Finish grading on entrance toad.

Photo Attributes Capture Date/Time: Tue Nov 01 2016 07:50:20 GMT+0500 (GMT+05:00)

Coordinates: 32.618851, -116.951918

View Direction: East

Photo



Caption Excavating vault.

Photo Attributes Capture Date/Time: Tue Nov 01 2016 07:31:56 GMT+0500 (GMT+05:00)

Coordinates: 32.619959, -116.948701

View Direction: South

Photo



Caption Hydromulch on west slope.

Photo Attributes Capture Date/Time: Tue Nov 01 2016 07:18:28 GMT+0500 (GMT+05:00)

Coordinates: 32.618851, -116.950528

View Direction: Southeast

Daily Checklist	
Q1 – General Avoidance and Minimization: (a) Were the limits of work areas and access roads defined adequately? (b) Were construction activities limited to CPUC-approved work areas?	Met Requirements
Q2 – Air Quality/GHG: (a) Were dust avoidance and minimization requirements implemented and monitored adequately? (b) Was dust generation below required thresholds? (c) Were equipment and vehicles maintained and operated in a manner to limit emissions? (d) Was organic waste collected and separated from non-organic waste for appropriate composting or recycling as required?	Met Requirements
Q2 Notes	Some litter was detected, apparently due to a waste collection bag being out overnight (possible bite marks tearing bag), and was immediately picked up.
Q3 – Special-Status Plants: Were impact avoidance and minimization requirements for special-status plants implemented adequately (e.g., avoiding sensitive areas and restricting application of herbicides)?	N/A
Q4 – Wildlife (Non-Avian): Were impact avoidance and minimization requirements for wildlife implemented adequately (e.g., avoiding sensitive areas, covering excavations, and inspecting equipment/trenches)?	Met Requirements
Q5 – Nesting and Burrowing Birds: (a) Were active nests and occupied burrows identified and monitored during applicable seasons as required? (b) Were impact avoidance and minimization requirements for any active nests or occupied burrows implemented adequately?	N/A
Q6 – Water Features and Aquatic Habitat: Were impact avoidance and minimization requirements for hydrology and aquatic habitat implemented adequately (e.g., avoiding water features or work during the wet season)?	N/A
Q7 – Stormwater, Erosion, and Sediment Control: (a) Were erosion and sediment adequately managed? (b) Were erosion and sediment control BMPs installed and functioning properly? (c) Were inactive or completed work areas stabilized and/or restored adequately?	Met Requirements
Q7 Notes	Minimal, if any, rain this week. All erosion BMPs intact and all BMPs promised last week were installed.
Q8 – Invasive Weed Control: Were procedures to prevent the spread of invasive weeds implemented adequately?	Met Requirements
Q9 – Hazardous Materials and Waste Management: (b) Were hazardous material waste disposed of appropriately? (c) Were any spills or leaks addressed adequately? (d) Was solid waste collected and disposed of adequately?	Met Requirements
Q10 – Fire Management: (a) Were fire prevention procedures implemented as required? (b) Was firefighting equipment available on site?	Met Requirements

Q11 – Cultural, Paleontological, and Tribal Resources: (a) Were impact avoidance and minimization requirements for cultural, paleontological, and tribal resources implemented adequately? (b) If potential resources or human remains were inadvertently discovered, were response procedures and protocols implemented as required?

Met Requirements

Q11 Notes

Paleontological resources monitor present during digging for vaults. No sensitive resources detected.

Q12 – Construction Noise: (a) Were impact avoidance and minimization requirements for noise implemented adequately? (b) If noise complaints were received, were they documented and addressed as required?

Met Requirements

Q13 – Maintain Access: (a) Were traffic controls implemented as required by applicable transportation plans and permits? (b) Was access to existing utility roads maintained adequately? (c) Was access to trails maintained adequately and were signs directing trail users installed?

Met Requirements

Q14 – Worker Training and Communication: Have all workers on site received the required environmental trainings for the project?

Met Requirements

Q14 Notes

Three new workers received WEAP training after morning tailgate.

Q15 – MMCRP Implementation: (a) Were project activities conducted in a manner that was consistent with the approved project as defined in the EIR and subsequent CPUC authorizations? (b) Were MMCRP procedures implemented adequately?

Met Requirements

2016-11-04 Inspection Report

SDG&E Salt Creek Substation Project: Daily Inspection Report

Inspection Date	2016-11-04
Start Time	07:00:00
End Time	00:29:00
Monitor Name	Dave Flietner
Organization	The Sanberg Group (Sanberg)
Summary of Construction Activities	Completion of screening wall, spreading fill for substation pad and placing concrete vaults were the primary activities.
Summary of Compliance Activities	LEI present. Status of SWPPP measures was discussed with LEI and CA.
Were any issues encountered?	No

Photo Log

Photo



Caption Vault being placed by crane.

Photo Attributes Capture Date/Time: Sat Nov 05 2016 00:03:04 GMT+0500 (GMT+05:00)
Coordinates: 32.619485, -116.948713
View Direction: Northwest

Photo



Caption Erosion control BMPs on western slope.

Photo Attributes Capture Date/Time: Fri Nov 04 2016 21:12:37 GMT+0500 (GMT+05:00)

Coordinates: 32.61857, -116.948716
View Direction: West

Photo



Caption Straw wattle in place near construction trailer.

Photo Attributes Capture Date/Time: Fri Nov 04 2016 20:54:25 GMT+0500 (GMT+05:00)
Coordinates: 32.61908, -116.948209
View Direction: Northwest

Photo



Caption Overview of site.

Photo Attributes Capture Date/Time: Fri Nov 04 2016 20:44:07 GMT+0500 (GMT+05:00)
Coordinates: 32.61883, -116.951388
View Direction: Southeast

Photo



Caption Erosion control in eastern brow ditch functioning.

Photo Attributes Capture Date/Time: Fri Nov 04 2016 20:27:51 GMT+0500 (GMT+05:00)
Coordinates: 32.620251, -116.949525
View Direction: Southeast

Photo



Caption Wattles moved to side ro provide temporary access for water line work.

Photo Attributes Capture Date/Time: Fri Nov 04 2016 20:26:00 GMT+0500 (GMT+05:00)
Coordinates: 32.620307, -116.949521
View Direction: Northeast

Photo



Caption Minor litter and food waste left at wall builders lunch spot was subsequently cleaned up.

Photo Attributes Capture Date/Time: Fri Nov 04 2016 23:02:12 GMT+0500 (GMT+05:00)
Coordinates: 32.619257, -116.948848
View Direction: West

Photo



Caption Spreading and mixing fill for substation pad.

Photo Attributes Capture Date/Time: Fri Nov 04 2016 20:04:43 GMT+0500 (GMT+05:00)
Coordinates: 32.619832, -116.948921
View Direction: Northeast

Photo



Caption Pit. for vault.

Photo Attributes Capture Date/Time: Fri Nov 04 2016 07:13:22 GMT+0500 (GMT+05:00)
 Coordinates: 32.619078, -116.949263
 View Direction: East

Daily Checklist

Q1 – General Avoidance and Minimization: (a) Were the limits of work areas and access roads defined adequately? (b) Were construction activities limited to	Met Requirements
Q2 – Air Quality/GHG: (a) Were dust avoidance and minimization requirements implemented and monitored adequately? (b) Was dust generation below required thresholds? (c) Were equipment and vehicles maintained and operated in a manner to limit emissions? (d) Was organic waste collected and separated from non-organic waste for appropriate composting or recycling as required?	Met Requirements
Q3 – Special-Status Plants: Were impact avoidance and minimization requirements for special-status plants implemented adequately (e.g., avoiding sensitive areas and restricting application of herbicides)?	N/A
Q4 – Wildlife (Non-Avian): Were impact avoidance and minimization requirements for wildlife implemented adequately (e.g., avoiding sensitive areas, covering excavations, and inspecting equipment/trenches)?	N/A
Q5 – Nesting and Burrowing Birds: (a) Were active nests and occupied burrows identified and monitored during applicable seasons as required? (b) Were impact avoidance and minimization requirements for any active nests or occupied	N/A
Q6 – Water Features and Aquatic Habitat: Were impact avoidance and minimization requirements for hydrology and aquatic habitat implemented adequately (e.g., avoiding water features or work during the wet season)?	N/A
Q7 – Stormwater, Erosion, and Sediment Control: (a) Were erosion and sediment adequately managed? (b) Were erosion and sediment control BMPs installed and functioning properly? (c) Were inactive or completed work areas stabilized and/or	Met Requirements
Q7 Notes	LEI and CA are in regular discussion with QSP regarding SWPPP BMPs. Additional silt fencing and BFMs will be discussed at weekly meetings. Wattles below water main trench will be replaced when this work is completed; no rain is predicted before then.
Q8 – Invasive Weed Control: Were procedures to prevent the spread of invasive weeds implemented adequately?	Met Requirements
Q9 – Hazardous Materials and Waste Management: (b) Were hazardous material waste disposed of appropriately? (c) Were any spills or leaks addressed adequately? (d) Was solid waste collected and disposed of adequately?	Met Requirements
Q9 Notes	Litter and food waste at wall crew's break area was observed and cleaned up.
Q10 – Fire Management: (a) Were fire prevention procedures implemented as required? (b) Was firefighting equipment available on site?	Met Requirements
Q11 – Cultural, Paleontological, and Tribal Resources: (a) Were impact avoidance and minimization requirements for cultural, paleontological, and tribal resources implemented adequately? (b) If potential resources or human remains were inadvertently discovered, were response procedures and protocols	N/A
Q12 – Construction Noise: (a) Were impact avoidance and minimization requirements for noise implemented adequately? (b) If noise complaints were received, were they documented and addressed as required?	Met Requirements

Q13 – Maintain Access: (a) Were traffic controls implemented as required by applicable transportation plans and permits? (b) Was access to existing utility roads maintained adequately? (c) Was access to trails maintained adequately and were signs directing trail users installed?

Met Requirements

Q14 – Worker Training and Communication: Have all workers on site received the required environmental trainings for the project?

Met Requirements

Q14 Notes

LEI provided WEAP training for 5 new workers here for vault installation.

Q15 – MMCRP Implementation: (a) Were project activities conducted in a manner that was consistent with the approved project as defined in the EIR and subsequent CPUC authorizations? (b) Were MMCRP procedures implemented

Met Requirements

2011-11-16 Inspection Report

SDG&E Salt Creek Substation Project: Daily Inspection Report

Inspection Date	2016-11-16
Start Time	00:30:00
End Time	01:30:00
Monitor Name	Korey Klutz
Organization	Panorama Environmental, Inc. (Panorama)
Summary of Construction Activities	Site construction ongoing within perimeter walls, vault construction just outside walls. Storm management improvements were made along western portion of the site.
Summary of Compliance Activities	Paleo and LEI were onsite actively monitoring for site compliance with the project conditions of approval.
Were any issues encountered?	No

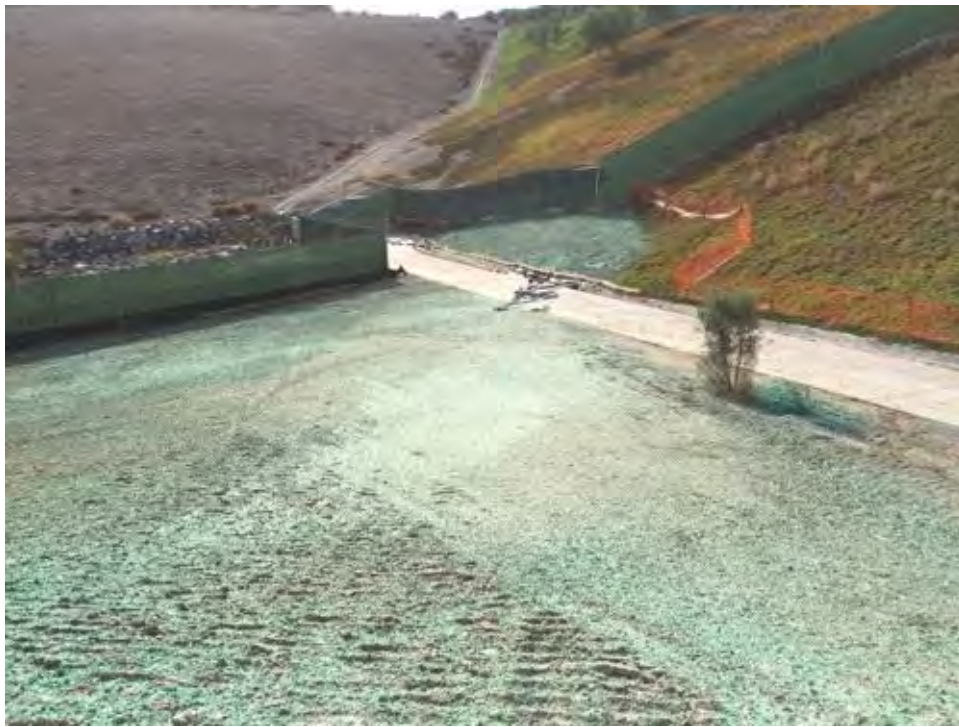
Photo Log

Photo



Caption Personal vehicle parking area and vault construction area
Photo Attributes Capture Date/Time: Thu Nov 17 2016 00:01:44 GMT-0800 (PST)
Coordinates: 33.097523, -117.200103
View Direction: Northwest

Photo



Caption BFM slope

Photo Attributes Capture Date/Time: Thu Nov 17 2016 00:01:11 GMT-0800 (PST)
Coordinates: 33.097506, -117.200113
View Direction: West

Photo



Caption Addition BFM sprayed on slope in northwest corner.

Photo Attributes Capture Date/Time: Thu Nov 17 2016 00:00:16 GMT-0800 (PST)
Coordinates: 33.097516, -117.200102
View Direction: West

Photo



Caption Vault with orange fencing

Photo Attributes Capture Date/Time: Wed Nov 16 2016 23:59:15 GMT-0800 (PST)
Coordinates: 33.097493, -117.200100
View Direction: Southwest

Photo



Caption Access road with fire management supplies and BMPs.

Photo Attributes Capture Date/Time: Wed Nov 16 2016 23:58:04 GMT-0800 (PST)
Coordinates: 33.097488, -117.200112
View Direction: Southeast

Photo



Caption Site overview

Photo Attributes Capture Date/Time: Wed Nov 16 2016 23:57:35 GMT-0800 (PST)
Coordinates: 33.097463, -117.200106
View Direction: West

Daily Checklist

Q1 – General Avoidance and Minimization: (a) Were the limits of work areas and access roads defined adequately? (b) Were construction activities limited to CPUC-approved work areas?	Met Requirements
Q2 – Air Quality/GHG: (a) Were dust avoidance and minimization requirements implemented and monitored adequately? (b) Was dust generation below required thresholds? (c) Were equipment and vehicles maintained and operated in a manner to limit emissions? (d) Was organic waste collected and separated from non-organic waste for appropriate composting or recycling as required?	Met Requirements
Q3 – Special-Status Plants: Were impact avoidance and minimization requirements for special-status plants implemented adequately (e.g., avoiding sensitive areas and restricting application of herbicides)?	Met Requirements
Q4 – Wildlife (Non-Avian): Were impact avoidance and minimization requirements for wildlife implemented adequately (e.g., avoiding sensitive areas, covering excavations, and inspecting equipment/trenches)?	Met Requirements
Q5 – Nesting and Burrowing Birds: (a) Were active nests and occupied burrows identified and monitored during applicable seasons as required? (b) Were impact avoidance and minimization requirements for any active nests or occupied burrows implemented adequately?	Met Requirements
Q6 – Water Features and Aquatic Habitat: Were impact avoidance and minimization requirements for hydrology and aquatic habitat implemented adequately (e.g., avoiding water features or work during the wet season)?	Met Requirements
Q7 – Stormwater, Erosion, and Sediment Control: (a) Were erosion and sediment adequately managed? (b) Were erosion and sediment control BMPs installed and functioning properly? (c) Were inactive or completed work areas stabilized and/or restored adequately?	Met Requirements
Q8 – Invasive Weed Control: Were procedures to prevent the spread of invasive weeds implemented adequately?	Met Requirements
Q9 – Hazardous Materials and Waste Management: (b) Were hazardous material waste disposed of appropriately? (c) Were any spills or leaks addressed adequately? (d) Was solid waste collected and disposed of adequately?	Met Requirements
Q10 – Fire Management: (a) Were fire prevention procedures implemented as required? (b) Was firefighting equipment available on site?	Met Requirements
Q11 – Cultural, Paleontological, and Tribal Resources: (a) Were impact avoidance and minimization requirements for cultural, paleontological, and tribal resources implemented adequately? (b) If potential resources or human remains were inadvertently discovered, were response procedures and protocols implemented as required?	Met Requirements
Q12 – Construction Noise: (a) Were impact avoidance and minimization requirements for noise implemented adequately? (b) If noise complaints were	Met Requirements

received, were they documented and addressed as required?

Q13 – Maintain Access: (a) Were traffic controls implemented as required by applicable transportation plans and permits? (b) Was access to existing utility roads maintained adequately? (c) Was access to trails maintained adequately and were signs directing trail users installed? Met Requirements

Q14 – Worker Training and Communication: Have all workers on site received the required environmental trainings for the project? Met Requirements

Q15 – MMCRP Implementation: (a) Were project activities conducted in a manner that was consistent with the approved project as defined in the EIR and subsequent CPUC authorizations? (b) Were MMCRP procedures implemented adequately? Met Requirements

**SDG&E Salt Creek Substation
Project: Daily Inspection Report**

Inspection Date	2016-11-17
Start Time	07:42:00
End Time	10:34:00
Monitor Name	Sheila Hoyer
Organization	Panorama Environmental, Inc. (Panorama)
Summary of Construction Activities	Installing curb and gutter along Access Road A, pouring foundations for substation, final grading around bioretention basin. Covering conduit in trenches with concrete slurry.
Summary of Compliance Activities	BFM on NW slope applied yesterday. Repair of silt fences has been completed. Need Erosion controls installed around recycled water trench.
Were any issues encountered?	No

Photo Log

Photo



Caption Silt fence has been repaired as requested.

Photo Attributes Capture Date/Time: Thu Nov 17 2016 09:16:47 GMT-0800 (PST)
Coordinates: 32.618465, -116.948881
View Direction: West

Photo



Caption BFM applied thinly on NW slope

Photo Attributes Capture Date/Time: Thu Nov 17 2016 09:13:50 GMT-0800 (PST)
Coordinates: 32.618894, -116.950338
View Direction: Northwest

Photo



Caption Oil containment basin

Photo Attributes Capture Date/Time: Thu Nov 17 2016 09:01:01 GMT-0800 (PST)
Coordinates: 32.618970, -116.949467
View Direction: Northeast

Photo



Caption Foundation for the control house

Photo Attributes Capture Date/Time: Thu Nov 17 2016 08:59:00 GMT-0800 (PST)
Coordinates: 32.619346, -116.949296
View Direction: North

Photo



Caption Transformer footings

Photo Attributes Capture Date/Time: Thu Nov 17 2016 08:55:26 GMT-0800 (PST)
Coordinates: 32.619265, -116.949190
View Direction: North

Photo



Caption New curb and gutter along Access Road A

Photo Attributes Capture Date/Time: Thu Nov 17 2016 08:34:29 GMT-0800 (PST)
Coordinates: 32.618917, -116.951296
View Direction: Northeast

Photo



Caption New BFM on NW corner.

Photo Attributes Capture Date/Time: Thu Nov 17 2016 08:32:31 GMT-0800 (PST)
Coordinates: 32.618806, -116.951486
View Direction: Southwest

Photo



Caption Fire water line and new hydrant

Photo Attributes Capture Date/Time: Thu Nov 17 2016 08:23:31 GMT-0800 (PST)
Coordinates: 32.620162, -116.949575
View Direction: Northeast

Photo



Caption New parking area

Photo Attributes Capture Date/Time: Thu Nov 17 2016 08:12:56 GMT-0800 (PST)
Coordinates: 32.619961, -116.948621
View Direction: Northeast

Photo



Caption Overview of site

Photo Attributes Capture Date/Time: Thu Nov 17 2016 07:43:03 GMT-0800 (PST)
 Coordinates: 32.618476, -116.952163
 View Direction: Southeast

Daily Checklist

<p>Q1 – General Avoidance and Minimization: (a) Were the limits of work areas and access roads defined adequately? (b) Were construction activities limited to CPUC-approved work areas?</p>	Met Requirements
<p>Q2 – Air Quality/GHG: (a) Were dust avoidance and minimization requirements implemented and monitored adequately? (b) Was dust generation below required thresholds? (c) Were equipment and vehicles maintained and operated in a manner to limit emissions? (d) Was organic waste collected and separated from non-organic waste for appropriate composting or recycling as required?</p>	Met Requirements
<p>Q3 – Special-Status Plants: Were impact avoidance and minimization requirements for special-status plants implemented adequately (e.g., avoiding sensitive areas and restricting application of herbicides)?</p>	Met Requirements
<p>Q4 – Wildlife (Non-Avian): Were impact avoidance and minimization requirements for wildlife implemented adequately (e.g., avoiding sensitive areas, covering excavations, and inspecting equipment/trenches)?</p>	Met Requirements
<p>Q5 – Nesting and Burrowing Birds: (a) Were active nests and occupied burrows identified and monitored during applicable seasons as required? (b) Were impact avoidance and minimization requirements for any active nests or occupied burrows implemented adequately?</p>	N/A
<p>Q6 – Water Features and Aquatic Habitat: Were impact avoidance and minimization requirements for hydrology and aquatic habitat implemented adequately (e.g., avoiding water features or work during the wet season)?</p>	Met Requirements
<p>Q7 – Stormwater, Erosion, and Sediment Control: (a) Were erosion and sediment adequately managed? (b) Were erosion and sediment control BMPs installed and functioning properly? (c) Were inactive or completed work areas stabilized and/or restored adequately?</p>	Corrections Required
<p>Q7 Notes</p>	Erosion controls required around recycled water trench work. Site super will have them installed today.
<p>Q8 – Invasive Weed Control: Were procedures to prevent the spread of invasive weeds implemented adequately?</p>	Met Requirements
<p>Q9 – Hazardous Materials and Waste Management: (b) Were hazardous material waste disposed of appropriately? (c) Were any spills or leaks addressed adequately? (d) Was solid waste collected and disposed of adequately?</p>	Met Requirements
<p>Q9 Notes</p>	Drip pans present under equipment.
<p>Q10 – Fire Management: (a) Were fire prevention procedures implemented as required? (b) Was firefighting equipment available on site?</p>	Met Requirements
<p>Q10 Notes</p>	Traffic monitor is verifying fire tools present on vehicles parking on construction site. There is

a new parking area adjacent to construction site where personal vehicles can be parked.

Q11 – Cultural, Paleontological, and Tribal Resources: (a) Were impact avoidance and minimization requirements for cultural, paleontological, and tribal resources implemented adequately? (b) If potential resources or human remains were inadvertently discovered, were response procedures and protocols implemented as required? N/A

Q11 Notes Paleo monitor on site. Cultural and Native American monitors on call.

Q12 – Construction Noise: (a) Were impact avoidance and minimization requirements for noise implemented adequately? (b) If noise complaints were received, were they documented and addressed as required? Met Requirements

Q13 – Maintain Access: (a) Were traffic controls implemented as required by applicable transportation plans and permits? (b) Was access to existing utility roads maintained adequately? (c) Was access to trails maintained adequately and were signs directing trail users installed? Met Requirements

Q13 Notes Traffic monitor present at entrance to site. Signs posted.

Q14 – Worker Training and Communication: Have all workers on site received the required environmental trainings for the project? Met Requirements

Q14 Notes LEI gave trainings to 5 new workers this morning.

Q15 – MMCRP Implementation: (a) Were project activities conducted in a manner that was consistent with the approved project as defined in the EIR and subsequent CPUC authorizations? (b) Were MMCRP procedures implemented adequately? Met Requirements

**SDG&E Salt Creek Substation Project:
Daily Inspection Report**

Inspection Date	2016-11-18
Start Time	07:00:00
End Time	12:47:00
Monitor Name	Dave Flietner
Organization	The Sanberg Group (Sanberg)
Summary of Construction Activities	Excavation for conduits and substation foundations, building foundations, and access road construction were the major activities.
Summary of Compliance Activities	LEI, paleontological monitor and QSP were on site and monitored their respective project elements.
Were any issues encountered?	No

Photo Log

Photo



Caption Sediment being removed from brow ditch.

Photo Attributes Capture Date/Time: Fri Nov 18 2016 11:36:11 GMT-0800 (PST)
Coordinates: 0, 0
View Direction: North

Photo



Caption Sediment in brow ditch.

Photo Attributes Capture Date/Time: Fri Nov 18 2016 10:17:33 GMT-0800 (PST)
Coordinates: 0, 0
View Direction: North

Photo



Caption Site overview.

Photo Attributes Capture Date/Time: Fri Nov 18 2016 08:46:01 GMT-0800 (PST)
Coordinates: 0, 0
View Direction: Southeast

Photo



Caption Foundations lacked small mammal/reptile exit ramps.

Photo Attributes Capture Date/Time: Fri Nov 18 2016 08:10:25 GMT-0800 (PST)
Coordinates: 0, 0
View Direction: North

Photo



Caption Paleontological monitor observing excavation.

Photo Attributes Capture Date/Time: Fri Nov 18 2016 08:03:47 GMT-0800 (PST)

Coordinates: 0, 0
View Direction: East

Photo



Caption Concrete washouts with secondary containment.

Photo Attributes Capture Date/Time: Fri Nov 18 2016 07:53:53 GMT-0800 (PST)
Coordinates: 0, 0
View Direction: Northeast

Photo



Caption Crew working on substation foundations.

Photo Attributes Capture Date/Time: Fri Nov 18 2016 07:48:37 GMT-0800 (PST)
Coordinates: 0, 0
View Direction: North

Photo



Caption Straw wattle placement around excavation for water line.
 Photo Attributes Capture Date/Time: Fri Nov 18 2016 07:39:28 GMT-0800 (PST)
 Coordinates: 0, 0
 View Direction: North

Photo



Caption Vehicles parked on site have fire suppression gear.

Photo Attributes Capture Date/Time: Fri Nov 18 2016 07:30:08 GMT-0800 (PST)
 Coordinates: 0, 0
 View Direction: Southwest

Daily Checklist

Q1 – General Avoidance and Minimization: (a) Were the limits of work areas and access roads defined adequately? (b) Were construction activities limited to CPUC-approved work areas?	Met Requirements
Q2 – Air Quality/GHG: (a) Were dust avoidance and minimization requirements implemented and monitored adequately? (b) Was dust generation below required thresholds? (c) Were equipment and vehicles maintained and operated in a manner to limit emissions? (d) Was organic waste collected and separated from non-organic waste for appropriate composting or recycling as required?	Met Requirements
Q2 Notes	No dust escaped from site above prescribed levels.
Q3 – Special-Status Plants: Were impact avoidance and minimization requirements for special-status plants implemented adequately (e.g., avoiding sensitive areas and restricting application of herbicides)?	N/A
Q4 – Wildlife (Non-Avian): Were impact avoidance and minimization requirements for wildlife implemented adequately (e.g., avoiding sensitive areas, covering excavations, and inspecting equipment/trenches)?	Met Requirements
Q4 Notes	Exit ramps were not in place around foundations within substation, but no wildlife were observed within these (fairly inaccessible) areas. LEI informed contractor of this requirement and they will place wood ramps in pits at the end of each day.
Q5 – Nesting and Burrowing Birds: (a) Were active nests and occupied burrows identified and monitored during applicable seasons as required? (b) Were impact avoidance and minimization requirements for any active nests or occupied burrows implemented adequately?	N/A
Q6 – Water Features and Aquatic Habitat: Were impact avoidance and minimization requirements for hydrology and aquatic habitat implemented adequately (e.g., avoiding water features or work during the wet season)?	N/A
Q7 – Stormwater, Erosion, and Sediment Control: (a) Were erosion and sediment adequately managed? (b) Were erosion and sediment control BMPs installed and functioning properly? (c) Were inactive or completed work areas stabilized and/or restored adequately?	Met Requirements
Q7 Notes	Wattles were in place around soil piles. Instruction given to cover concrete washouts at end of day were given at tailboard. Sediments were removed from brow ditches and loose dirt. QSP stated that BMPS exceed in-progress standards.

Q8 – Invasive Weed Control: Were procedures to prevent the spread of invasive weeds implemented adequately?	Met Requirements
Q9 – Hazardous Materials and Waste Management: (b) Were hazardous material waste disposed of appropriately? (c) Were any spills or leaks addressed adequately? (d) Was solid waste collected and disposed of adequately?	Met Requirements
Q10 – Fire Management: (a) Were fire prevention procedures implemented as required? (b) Was firefighting equipment available on site?	Met Requirements
Q11 – Cultural, Paleontological, and Tribal Resources: (a) Were impact avoidance and minimization requirements for cultural, paleontological, and tribal resources implemented adequately? (b) If potential resources or human remains were inadvertently discovered, were response procedures and protocols implemented as required?	Met Requirements
Q11 Notes	Paleontological monitor observed excavation into native soil. No sensitive resources were detected.
Q12 – Construction Noise: (a) Were impact avoidance and minimization requirements for noise implemented adequately? (b) If noise complaints were received, were they documented and addressed as required?	Met Requirements
Q13 – Maintain Access: (a) Were traffic controls implemented as required by applicable transportation plans and permits? (b) Was access to existing utility roads maintained adequately? (c) Was access to trails maintained adequately and were signs directing trail users installed?	Met Requirements
Q14 – Worker Training and Communication: Have all workers on site received the required environmental trainings for the project?	Met Requirements
Q14 Notes	One new worker received WEAP training today.
Q15 – MMCRP Implementation: (a) Were project activities conducted in a manner that was consistent with the approved project as defined in the EIR and subsequent CPUC authorizations? (b) Were MMCRP procedures implemented adequately?	Met Requirements

2012-11-29 Inspection Report

SDG&E Salt Creek Substation Project: Daily Inspection Report

Inspection Date	2016-11-29
Start Time	09:23:00
End Time	11:23:00
Monitor Name	Korey Klutz
Organization	Panorama Environmental, Inc. (Panorama)
Summary of Construction Activities	General site construction including perimeter wall construction, foundation work inside walls, fence construction along access road, and vault construction within Olympic parkway. Concrete trucks were actively using the eastern access road and delivering product to support the foundation construction.
Summary of Compliance Activities	LEI and paleo monitors were onsite and actively overseeing construction and ensuring construction site compliance. The site needs general bmp maintenance throughout all culverts and several erosion rill locations need to be repaired. The largest erosion area is along the eastern fence line. The LEI explained the engineer will have to figure out a fix for this location. It should be noted that all areas that need maintenance are not causing any offsite sediment discharges.
Were any issues encountered?	No

Photo Log

Photo



Caption Erosion along access road

Photo Attributes Capture Date/Time: Wed Nov 30 2016 07:30:31 GMT-0800 (PST)
Coordinates: 33.097476, -117.200057
View Direction: Northwest

Photo



Caption Sediment trap in culvert

Photo Attributes Capture Date/Time: Wed Nov 30 2016 07:29:48 GMT-0800 (PST)
Coordinates: 33.097476, -117.200057
View Direction: North

Photo



Caption Erosion

Photo Attributes Capture Date/Time: Wed Nov 30 2016 07:29:14 GMT-0800 (PST)
Coordinates: 33.097476, -117.200057
View Direction: West

Photo



Caption Clean storm drain outlet

Photo Attributes Capture Date/Time: Wed Nov 30 2016 07:28:36 GMT-0800 (PST)
Coordinates: 33.097476, -117.200057
View Direction: North

Photo



Caption Erosion along eastern fence line

Photo Attributes Capture Date/Time: Wed Nov 30 2016 07:28:08 GMT-0800 (PST)
Coordinates: 33.097487, -117.200092
View Direction: East

Photo



Caption Sediment in culvert

Photo Attributes Capture Date/Time: Wed Nov 30 2016 07:27:29 GMT-0800 (PST)
Coordinates: 33.097496, -117.200119
View Direction: Southeast

Photo



Caption Open trench

Photo Attributes Capture Date/Time: Wed Nov 30 2016 07:26:59 GMT-0800 (PST)
Coordinates: 33.097427, -117.200079
View Direction: Northeast

Photo



Caption Site overview

Photo Attributes Capture Date/Time: Wed Nov 30 2016 07:26:26 GMT-0800 (PST)
Coordinates: 33.097433, -117.200031
View Direction: West

Daily Checklist

Q1 – General Avoidance and Minimization: (a) Were the limits of work areas and access roads defined adequately? (b) Were construction activities limited to CPUC-approved work areas?	Met Requirements
Q2 – Air Quality/GHG: (a) Were dust avoidance and minimization requirements implemented and monitored adequately? (b) Was dust generation below required thresholds? (c) Were equipment and vehicles maintained and operated in a manner to limit emissions? (d) Was organic waste collected and separated from non-organic waste for appropriate composting or recycling as required?	Met Requirements
Q3 – Special-Status Plants: Were impact avoidance and minimization requirements for special-status plants implemented adequately (e.g., avoiding sensitive areas and restricting application of herbicides)?	Met Requirements
Q4 – Wildlife (Non-Avian): Were impact avoidance and minimization requirements for wildlife implemented adequately (e.g., avoiding sensitive areas, covering excavations, and inspecting equipment/trenches)?	Met Requirements
Q5 – Nesting and Burrowing Birds: (a) Were active nests and occupied burrows identified and monitored during applicable seasons as required? (b) Were impact avoidance and minimization requirements for any active nests or occupied burrows implemented adequately?	Met Requirements
Q6 – Water Features and Aquatic Habitat: Were impact avoidance and minimization requirements for hydrology and aquatic habitat implemented adequately (e.g., avoiding water features or work during the wet season)?	Met Requirements
Q7 – Stormwater, Erosion, and Sediment Control: (a) Were erosion and sediment adequately managed? (b) Were erosion and sediment control BMPs installed and functioning properly? (c) Were inactive or completed work areas stabilized and/or restored adequately?	Met Requirements
Q7 Notes	Conducted complete perimeter inspection of the site and evaluated BMPs throughout. No offsite sediment discharge was observed. Recommended all culvert traps to be maintained and sediment removal to occur prior to next rain event.
Q8 – Invasive Weed Control: Were procedures to prevent the spread of invasive weeds implemented adequately?	Met Requirements
Q9 – Hazardous Materials and Waste Management: (b) Were hazardous material waste disposed of appropriately? (c) Were any spills or leaks addressed adequately? (d) Was solid waste collected and disposed of adequately?	Met Requirements

Q9 Notes	Made recommendation to empty all trap bins that contained water. Some bins had a mixture of water and oil and were full.
Q10 – Fire Management: (a) Were fire prevention procedures implemented as required? (b) Was firefighting equipment available on site?	Met Requirements
Q11 – Cultural, Paleontological, and Tribal Resources: (a) Were impact avoidance and minimization requirements for cultural, paleontological, and tribal resources implemented adequately? (b) If potential resources or human remains were inadvertently discovered, were response procedures and protocols implemented as required?	Met Requirements
Q12 – Construction Noise: (a) Were impact avoidance and minimization requirements for noise implemented adequately? (b) If noise complaints were received, were they documented and addressed as required?	Met Requirements
Q13 – Maintain Access: (a) Were traffic controls implemented as required by applicable transportation plans and permits? (b) Was access to existing utility roads maintained adequately? (c) Was access to trails maintained adequately and were signs directing trail users installed?	Met Requirements
Q14 – Worker Training and Communication: Have all workers on site received the required environmental trainings for the project?	Met Requirements
Q15 – MMCRP Implementation: (a) Were project activities conducted in a manner that was consistent with the approved project as defined in the EIR and subsequent CPUC authorizations? (b) Were MMCRP procedures implemented adequately?	Met Requirements

ATTACHMENT B

SDG&E ENVIRONMENTAL COMPLIANCE REPORTS



Salt Creek Substation Project
WEEKLY ENVIRONMENTAL COMPLIANCE REPORT
October 31 – November 5, 2016

INTRODUCTION

This report provides an overview of construction progress and applicant-proposed measure (APM) and mitigation measure (MM) implementation during construction of the San Diego Gas & Electric Company (SDG&E) Salt Creek Substation Project (Project) during the week ending on November 5, 2016. Work on the Project was conducted by SDG&E, Geo Pacific Services, Inc. (GeoPac) and their construction subcontractors.

CONSTRUCTION OVERVIEW

On June 21, 2016, the California Public Utilities Commission (CPUC) issued a Notice to Proceed for construction of the Project. Construction of the Salt Creek Substation kicked off on July 18, 2016. During this reporting period, construction activities occurred October 31, 2016 through November 5, 2016 and are listed in the following section by Project component. A Lead Environmental Inspector was on-site October 31 – November 5.

CONSTRUCTION ACTIVITIES

Salt Creek Substation

Construction activities during this reporting period included mobilization, conducting earthwork, installation of additional BMPs, developing site surfaces, trenching and concrete pour for 12 kV conduit, excavation of holes for 12kV vaults in front of sub-station and placement of concrete vaults in excavated holes. Work also included continued construction of the masonry wall, application of water proofing on the masonry wall, initiation of demobilization of Vic Ross Masonry sub-contractor, water tie-ins on Hunte Parkway, preparation of slopes around the bio-retention basin, and excavation and concrete formwork for oil catch basin.

WORKER ENVIRONMENTAL AWARENESS PROGRAM

Approximately 19 new project personnel attended the required environmental training as part of the Project Worker Environmental Awareness Program (WEAP). Additionally, approximately 18 project personnel attended the Supervisor Weap Training on Tuesday November 1, 2016 at SDG&E's office on 8305 Century Park Court, San Diego CA 92123 for the below grade construction work. To date, approximately 269 Project personnel have received the required environmental awareness education.

ENVIRONMENTAL COMPLIANCE SUMMARY

The following subsections provide an assessment of environmental resources and a summary of the APMs, MMs, and permit conditions that were implemented during the week ending on November 5, 2016.

Air Quality

During earth moving activities a water truck was used to control dust. During this reporting period all pavement was kept clean. No winds occurred that were higher than 20 mph.

Biological Resources

During this monitoring period, construction occurred within the project limits of disturbance, adjacent to, but not within the special status plant locations. No special-status species were observed during the monitoring period.

Cultural and Paleontological Resources

Cultural and Native American monitors were not on-site during construction activities from October 31 through November 5, 2016. During this reporting period, excavation was limited to fill material, and native material previously graded to at least 10-feet below the surface, where the potential for impacts to cultural and archaeological resources was extremely low. Cultural and Native American monitors were on-call each day of construction, but were not called to the site. A paleontological monitor was on-site during construction activities from October 31 through November 4, 2016. The paleontological monitor was not on-site on November 5, 2016 as there were no trenching or excavation activities occurring on that day.

Hazardous Materials and Waste

All fueling was conducted in appropriate areas and all vehicles and equipment were checked for leaks. No fuel spills or leaks were observed during this reporting period.

Noise

Construction activities during this reporting period were confined to Monday through Friday and occurred between 7:00 a.m. and 7:00 p.m. No work occurred on Saturday.

Traffic and Transportation

The traffic control plan approved by the City of Chula Vista was implemented and general traffic measures were adhered to. The majority of project personnel are parking their personal vehicles within a designated personal vehicle parking area within the project limits and established parking area adjacent to the southeast corner of the project limits.

Storm Water Compliance

During this reporting period, the project SWPPP and BMPs were implemented in accordance with the SDG&E Water Quality Construction BMP Manual. Permanent slopes within the project site were sprayed with BFM during the week of October 10 through October 15, 2016. The

Qualified SWPPP Practitioner inspected the site on November 2 for the Weekly SWPPP Inspection. No BMP deficiencies observed during the inspections.

Other

On November 1, 2016 the recycled water pipeline that was previously connected to the high-rise water tank broke. Prior to the pipeline breaking, the high-rise water tank had been recently disconnected from the pipeline. The pipeline was at a depth of 24 inches below ground, however the water rose up and to the soil surface. Upon discovering the leaked water, the main valve for the pipeline was immediately shut off. Approximately 150 gallons of water flowed up and spread out across the soil and asphalt surfaces. The water on the soil surface was absorbed and the water on the asphalt flowed downhill and into the V-ditch located within the eastern side of the project. The sand bag check dams stopped the water from flowing off-site and no water exited the project limits. The broken pipeline was taken out of service. The water in the V-ditch evaporated and was not present on November 2, 2016. A courtesy notice including details of the broken recycled water pipeline was sent to the San Diego Regional Water Quality Control Board and the City of Chula Vista on November 4, 2016 (Attachment D).

Non-Compliances

The observation of the broken recycled water pipeline on November 1, 2016 was reported as a Level 1: Occurrence. The occurrence was reported to SDG&E within five minutes of the recycled water pipeline breaking. The water was contained and all project requirements were followed adequately. The occurrence did not put any resources at risk (i.e., air quality, water quality, vegetation, or wildlife).

ATTACHMENT A: PHOTOGRAPHS



Salt Creek Substation Project
ENVIRONMENTAL COMPLIANCE STATUS REPORT
Attachment A: Photographs



Photograph 1:
Excavation of holes for 12 kV vaults occurred during the week of October 31, 2016.



Photograph 2:
Application of water proofing on masonry walls occurred during the week of October 31, 2016.



Photograph 3:

Below ground recycled water pipeline broke on November 1, 2016.



Photograph 4:

Photograph of recycled water flowing across surface area. Observation of broken pipeline reported on November 1, 2016.

ATTACHMENT B: DAILY LOGS

Salt Creek Daily Inspection

Monitor Date: 10/31/2016

Weather Observations

Start Temperature: 53°F Midday Temperature: 71°F End Temperature: 68°F
Weather Conditions: Cloudy
Precipitation: None
Cloud Cover: 60

Construction Details

Construction Start Time: 7:00 AM Construction End Time: 3:30 PM

Construction Activities

- | | |
|---|---|
| <input checked="" type="checkbox"/> Mobilize materials equipment or prepared work areas | <input type="checkbox"/> Installed aboveground facilities |
| <input type="checkbox"/> Cleared or trimmed vegetation | <input type="checkbox"/> Installed landscaping |
| <input checked="" type="checkbox"/> Conduct earthwork | <input type="checkbox"/> Demobilized materials equipment or cleaned up work areas |
| <input checked="" type="checkbox"/> Developed site drainage facilities | |
| <input checked="" type="checkbox"/> Developed site surfaces | |
| <input type="checkbox"/> Installed underground facilities | |

Was a safety check-in conducted? Y Approximate Number of Construction Personnel On-site: 30

General Notes/Comments Slurry pour for the 12kv getaway, masonry wall construction, excavation for 12kv vaults, construction of oil catch basin.

General Issues

Monitor: Ron Walker

- | | |
|--|-----|
| A. Workplace limits verified and properly marked? | Yes |
| B. All activities within approved workspace limits? | Yes |
| C. Only approved access roads utilized for ingress and egress? | Yes |
| D. Access road signs in place? | Yes |
| E. Trash and debris contained and disposed of in proper manner? | Yes |
| F. All crew on site displaying hard-hat decals from WEAP training? | Yes |
| G. Speed limit observed by all project personnel? | Yes |
| H. Was construction noise limited to maximum allowed levels (mufflers being used, construction occurring only within allowed hours, vehicle idling minimized etc.) | Yes |
| I. Was existing vehicle and trail access maintained? | Yes |
| J. Did any health and safety incidents occur? | No |
| K. Were there any public complaints? | No |
| L. Was the project shut down for any reason today? | No |
| M. Were there any other incidents to report? | No |
-

Environmental Resources

Monitor: Ron Walker

Compliance Level: In Compliance

- | | |
|---|-----|
| A. Were all active work areas and access roads clearly marked with staking or flagging? | Yes |
| B. Did all vehicles and personnel stay in approved work areas? | Yes |
| C. Was fire suppression equipment within 50 feet of each active work area? | Yes |
| D. Were all construction activities completed between 7:00 a.m. and 7:00 p.m.? | Yes |

Salt Creek Daily Inspection

Monitor Date: 10/31/2016

Biological Resources

Monitor: Ron Walker

Compliance Level: In Compliance

- A. Were all work activities conducted outside of any established nesting bird buffer, active nests and/or burrows? **Yes**
- B. Were all equipment/vehicles that arrived on site clean and free of vegetative debris/soil? **Yes**
- C. Were any special-status species observed? **No**
- D. Did work activities occur in or adjacent to known locations of Special status plants? **Yes**
Known locations of special status plants exist outside and adjacent to the project limits. No work was conducted outside of the project limits.
- E. Did any construction activity occur within an ESA? **No**
- F. Was the work area surveyed for sensitive species immediately prior to ground-disturbing or vegetation removal activities? **Yes**
- G. Are all open excavations/trenches inspected for entrapped wildlife at least twice daily? **Yes**
- H. Are all large/steep excavations/trenches covered and/or fenced nightly? **Yes**
- I. Are excavations covered or equipped with earthen wildlife escape ramps by the end of the day? **Yes**
-

Cultural Resources

No Cultural Data Collected

Paleontological Resources

Monitor: Jen DiCenzo

Compliance Level: In Compliance

- A. Were ground disturbing activities conducted within a paleontological sensitive area? **Yes**
No new discoveries.
- B. Were any paleontological materials identified? **No**
- C. Were any paleontological materials damaged or destroyed? **No**

Salt Creek Daily Inspection

Monitor Date: 10/31/2016

Dust Control

Monitor: Ron Walker

Compliance Level: In Compliance

- | | |
|---|-----|
| A. Are materials carried off site covered or watered prior to leaving site? | N/A |
| B. Are exposed stockpiles of dirt covered or watered to control fugitive dust | Yes |
| C. Is all soil material tracked onto paved public roads swept daily? | Yes |
| D. Are all work areas and access roads watered daily if there is persistent fugitive dust is visible beyond the work area boundaries? | Yes |
| E. Are all loads covered or have a minimum of two feet of freeboard? | Yes |
| F. If sustained winds of 20 mph or greater are experienced, were soil disturbing activities terminated? | N/A |
| G. Are rock aprons or rattle/shaker plates installed at the intersections of dirt access routes and paved public roadways? | Yes |
-

Erosion and Sediment

Monitor: Ron Walker

Compliance Level: In Compliance

- | | |
|--|-----|
| A. Are there sufficient quantities of erosion control materials stockpiled at the construction site? | Yes |
| B. Are all locations of temporary stockpiles in approved areas and appropriately protected? | Yes |
| C. Were any rolled erosion control products used? | Yes |
| D. Were rolled erosion products comprised of entirely natural fiber biodegradable materials? | Yes |
-

Hazardous Substances

Monitor: Ron Walker

Compliance Level: In Compliance

- | | |
|--|-----|
| A. Is fueling conducted in appropriate areas with appropriate containment and spill materials? | Yes |
| B. Are vehicles and equipment checked for leaks? | Yes |
| C. Were any leaks observed? | No |
| D. Are spills cleaned up and disposed of properly? | Yes |
| E. Are clean-up materials available on site in case of a spill? | Yes |
| F. Was discolored or odiferous soil or groundwater encountered during excavation activities? | No |
-

Waste

Monitor: Ron Walker

Compliance Level: In Compliance

- | | |
|--|-----|
| A. Is project-generated litter removed from the construction site daily? | Yes |
| B. Are waste management receptacle levels appropriately maintained? | Yes |

Salt Creek Daily Inspection

Monitor Date: 11/1/2016

Weather Observations

Start Temperature: 58°F Midday Temperature: 72°F End Temperature: 67°F
Weather Conditions: Sunny
Precipitation: None
Cloud Cover: 15

Construction Details

Construction Start Time: 7:00 AM Construction End Time: 5:30 PM

Construction Activities

- | | |
|---|---|
| <input checked="" type="checkbox"/> Mobilize materials equipment or prepared work areas | <input type="checkbox"/> Installed aboveground facilities |
| <input type="checkbox"/> Cleared or trimmed vegetation | <input type="checkbox"/> Installed landscaping |
| <input checked="" type="checkbox"/> Conduct earthwork | <input type="checkbox"/> Demobilized materials equipment or cleaned up work areas |
| <input checked="" type="checkbox"/> Developed site drainage facilities | |
| <input checked="" type="checkbox"/> Developed site surfaces | |
| <input type="checkbox"/> Installed underground facilities | |

Was a safety check-in conducted? Y Approximate Number of Construction Personnel On-site: 35

General Notes/Comments Masonry wall construction, 12kv vault excavation, moved water tank, oil basin construction, masonry wall water proofing.

General Issues

Monitor: Ron Walker

- | | |
|--|-----|
| A. Workplace limits verified and properly marked? | Yes |
| B. All activities within approved workspace limits? | Yes |
| C. Only approved access roads utilized for ingress and egress? | Yes |
| D. Access road signs in place? | Yes |
| E. Trash and debris contained and disposed of in proper manner? | Yes |
| F. All crew on site displaying hard-hat decals from WEAP training? | Yes |
| G. Speed limit observed by all project personnel? | Yes |
| H. Was construction noise limited to maximum allowed levels (mufflers being used, construction occurring only within allowed hours, vehicle idling minimized etc.) | Yes |
| I. Was existing vehicle and trail access maintained? | Yes |
| J. Did any health and safety incidents occur? | No |
| K. Were there any public complaints? | No |
| L. Was the project shut down for any reason today? | No |
| M. Were there any other incidents to report? | Yes |

The recycled water line broke, and allowed approximately 150 gallons of water to leak out and flow over the asphalt and soil surface areas. Approximately half of the leaked water flowed into the east side of the V-ditch, however check dams stopped the water from leaving the project site. The pipe was repaired immediately.

Salt Creek Daily Inspection

Monitor Date: 11/1/2016

Environmental Resources

Monitor: Ron Walker

Compliance Level: In Compliance

- | | |
|---|-----|
| A. Were all active work areas and access roads clearly marked with staking or flagging? | Yes |
| B. Did all vehicles and personnel stay in approved work areas? | Yes |
| C. Was fire suppression equipment within 50 feet of each active work area? | Yes |
| D. Were all construction activities completed between 7:00 a.m. and 7:00 p.m.? | Yes |
-

Biological Resources

Monitor: Ron Walker

Compliance Level: In Compliance

- | | |
|---|-----|
| A. Were all work activities conducted outside of any established nesting bird buffer, active nests and/or burrows? | Yes |
| B. Were all equipment/vehicles that arrived on site clean and free of vegetative debris/soil? | Yes |
| C. Were any special-status species observed? | No |
| D. Did work activities occur in or adjacent to known locations of Special status plants?
Known locations of special status plants exist outside and adjacent to the project limits. No work was conducted outside of the project limits. | Yes |
| E. Did any construction activity occur within an ESA? | No |
| F. Was the work area surveyed for sensitive species immediately prior to ground-disturbing or vegetation removal activities? | Yes |
| G. Are all open excavations/trenches inspected for entrapped wildlife at least twice daily? | Yes |
| H. Are all large/steep excavations/trenches covered and/or fenced nightly? | Yes |
| I. Are excavations covered or equipped with earthen wildlife escape ramps by the end of the day? | Yes |
-

Cultural Resources

No Cultural Data Collected

Paleontological Resources

Monitor: Jen DiCenzo

Compliance Level: In Compliance

- | | |
|---|-----|
| A. Were ground disturbing activities conducted within a paleontological sensitive area?
No new discoveries | Yes |
| B. Were any paleontological materials identified? | No |
| C. Were any paleontological materials damaged or destroyed? | No |

Salt Creek Daily Inspection

Monitor Date: 11/1/2016

Dust Control

Monitor: Ron Walker

Compliance Level: In Compliance

- | | |
|---|-----|
| A. Are materials carried off site covered or watered prior to leaving site? | N/A |
| B. Are exposed stockpiles of dirt covered or watered to control fugitive dust | Yes |
| C. Is all soil material tracked onto paved public roads swept daily? | Yes |
| D. Are all work areas and access roads watered daily if there is persistent fugitive dust is visible beyond the work area boundaries? | Yes |
| E. Are all loads covered or have a minimum of two feet of freeboard? | Yes |
| F. If sustained winds of 20 mph or greater are experienced, were soil disturbing activities terminated? | N/A |
| G. Are rock aprons or rattle/shaker plates installed at the intersections of dirt access routes and paved public roadways? | Yes |
-

Erosion and Sediment

Monitor: Ron Walker

Compliance Level: In Compliance

- | | |
|--|-----|
| A. Are there sufficient quantities of erosion control materials stockpiled at the construction site? | Yes |
| B. Are all locations of temporary stockpiles in approved areas and appropriately protected? | Yes |
| C. Were any rolled erosion control products used? | Yes |
| D. Were rolled erosion products comprised of entirely natural fiber biodegradable materials? | Yes |
-

Hazardous Substances

Monitor: Ron Walker

Compliance Level: In Compliance

- | | |
|--|-----|
| A. Is fueling conducted in appropriate areas with appropriate containment and spill materials? | Yes |
| B. Are vehicles and equipment checked for leaks? | Yes |
| C. Were any leaks observed? | No |
| D. Are spills cleaned up and disposed of properly? | Yes |
| E. Are clean-up materials available on site in case of a spill? | Yes |
| F. Was discolored or odiferous soil or groundwater encountered during excavation activities? | No |
-

Waste

Monitor: Ron Walker

Compliance Level: In Compliance

- | | |
|--|-----|
| A. Is project-generated litter removed from the construction site daily? | Yes |
| B. Are waste management receptacle levels appropriately maintained? | Yes |

Salt Creek Daily Inspection

Monitor Date: 11/2/2016

Weather Observations

Start Temperature: 54°F Midday Temperature: 75°F End Temperature: 73°F
Weather Conditions: Sunny
Precipitation: None
Cloud Cover: 0

Construction Details

Construction Start Time: 7:00 AM Construction End Time: 5:00 PM
Construction Activities
 Mobilize materials equipment or prepared work areas Installed aboveground facilities
 Cleared or trimmed vegetation Installed landscaping
 Conduct earthwork Demobilized materials equipment or cleaned up work areas
 Developed site drainage facilities
 Developed site surfaces
 Installed underground facilities
Was a safety check-in conducted? Y Approximate Number of Construction Personnel On-site: 40
General Notes/Comments Masonry wall construction, excavation of 12 KV getaway, sanitized water tank, oil catch basin construction, site pad prepared.

General Issues

Monitor: Ron Walker

A. Workplace limits verified and properly marked? **Yes**

B. All activities within approved workspace limits? **Yes**

C. Only approved access roads utilized for ingress and egress? **Yes**

D. Access road signs in place? **Yes**

E. Trash and debris contained and disposed of in proper manner? **Yes**

F. All crew on site displaying hard-hat decals from WEAP training? **Yes**

G. Speed limit observed by all project personnel? **Yes**

H. Was construction noise limited to maximum allowed levels (mufflers being used, construction occurring only within allowed hours, vehicle idling minimized etc.) **Yes**

I. Was existing vehicle and trail access maintained? **Yes**

J. Did any health and safety incidents occur? **No**

K. Were there any public complaints? **No**

L. Was the project shut down for any reason today? **No**

M. Were there any other incidents to report? **No**

Environmental Resources

Monitor: Ron Walker

Compliance Level: In Compliance

A. Were all active work areas and access roads clearly marked with staking or flagging? **Yes**

B. Did all vehicles and personnel stay in approved work areas? **Yes**

C. Was fire suppression equipment within 50 feet of each active work area? **Yes**

D. Were all construction activities completed between 7:00 a.m. and 7:00 p.m.? **Yes**

Salt Creek Daily Inspection

Monitor Date: 11/2/2016

Biological Resources

Monitor: Ron Walker

Compliance Level: In Compliance

- A. Were all work activities conducted outside of any established nesting bird buffer, active nests and/or burrows? **Yes**
- B. Were all equipment/vehicles that arrived on site clean and free of vegetative debris/soil? **Yes**
- C. Were any special-status species observed? **No**
- D. Did work activities occur in or adjacent to known locations of Special status plants? **Yes**
Known locations of special status plants exist outside and adjacent to the project limits. No work was conducted outside of the project limits.
- E. Did any construction activity occur within an ESA? **No**
- F. Was the work area surveyed for sensitive species immediately prior to ground-disturbing or vegetation removal activities? **Yes**
- G. Are all open excavations/trenches inspected for entrapped wildlife at least twice daily? **Yes**
- H. Are all large/steep excavations/trenches covered and/or fenced nightly? **Yes**
- I. Are excavations covered or equipped with earthen wildlife escape ramps by the end of the day? **Yes**
-

Cultural Resources

No Cultural Data Collected

Paleontological Resources

Monitor: Jen DiCenzo

Compliance Level: In Compliance

- A. Were ground disturbing activities conducted within a paleontological sensitive area? **Yes**
No new discoveries
- B. Were any paleontological materials identified? **No**
- C. Were any paleontological materials damaged or destroyed? **No**

Salt Creek Daily Inspection

Monitor Date: 11/2/2016

Dust Control

Monitor: Ron Walker

Compliance Level: In Compliance

- | | |
|---|-----|
| A. Are materials carried off site covered or watered prior to leaving site? | N/A |
| B. Are exposed stockpiles of dirt covered or watered to control fugitive dust | Yes |
| C. Is all soil material tracked onto paved public roads swept daily? | Yes |
| D. Are all work areas and access roads watered daily if there is persistent fugitive dust is visible beyond the work area boundaries? | Yes |
| E. Are all loads covered or have a minimum of two feet of freeboard? | Yes |
| F. If sustained winds of 20 mph or greater are experienced, were soil disturbing activities terminated? | N/A |
| G. Are rock aprons or rattle/shaker plates installed at the intersections of dirt access routes and paved public roadways? | Yes |
-

Erosion and Sediment

Monitor: Ron Walker

Compliance Level: In Compliance

- | | |
|--|-----|
| A. Are there sufficient quantities of erosion control materials stockpiled at the construction site? | Yes |
| B. Are all locations of temporary stockpiles in approved areas and appropriately protected? | Yes |
| C. Were any rolled erosion control products used? | Yes |
| D. Were rolled erosion products comprised of entirely natural fiber biodegradable materials? | Yes |
-

Hazardous Substances

Monitor: Ron Walker

Compliance Level: In Compliance

- | | |
|--|-----|
| A. Is fueling conducted in appropriate areas with appropriate containment and spill materials? | Yes |
| B. Are vehicles and equipment checked for leaks? | Yes |
| C. Were any leaks observed? | No |
| D. Are spills cleaned up and disposed of properly? | Yes |
| E. Are clean-up materials available on site in case of a spill? | Yes |
| F. Was discolored or odiferous soil or groundwater encountered during excavation activities? | No |
-

Waste

Monitor: Ron Walker

Compliance Level: In Compliance

- | | |
|--|-----|
| A. Is project-generated litter removed from the construction site daily? | Yes |
| B. Are waste management receptacle levels appropriately maintained? | Yes |

Salt Creek Daily Inspection

Monitor Date: 11/3/2016

Weather Observations

Start Temperature: 59°F Midday Temperature: 79°F End Temperature: 76°F
Weather Conditions: Sunny
Precipitation: None
Cloud Cover: 0

Construction Details

Construction Start Time: 7:00 AM Construction End Time: 3:45 PM

Construction Activities

- | | |
|---|---|
| <input checked="" type="checkbox"/> Mobilize materials equipment or prepared work areas | <input type="checkbox"/> Installed aboveground facilities |
| <input type="checkbox"/> Cleared or trimmed vegetation | <input type="checkbox"/> Installed landscaping |
| <input checked="" type="checkbox"/> Conduct earthwork | <input type="checkbox"/> Demobilized materials equipment or cleaned up work areas |
| <input checked="" type="checkbox"/> Developed site drainage facilities | |
| <input checked="" type="checkbox"/> Developed site surfaces | |
| <input type="checkbox"/> Installed underground facilities | |

Was a safety check-in conducted? Y Approximate Number of Construction Personnel On-site: 42

General Notes/Comments 12kV getaway trench excavation, substation screen wall construction, substation pad grading, substation fill dirt and base delivery, main access road grading, oil catch basin construction, laying base for the vaults.

General Issues

Monitor: Ron Walker

- | | |
|--|-----|
| A. Workplace limits verified and properly marked? | Yes |
| B. All activities within approved workspace limits? | Yes |
| C. Only approved access roads utilized for ingress and egress? | Yes |
| D. Access road signs in place? | Yes |
| E. Trash and debris contained and disposed of in proper manner? | Yes |
| F. All crew on site displaying hard-hat decals from WEAP training? | Yes |
| G. Speed limit observed by all project personnel? | Yes |
| H. Was construction noise limited to maximum allowed levels (mufflers being used, construction occurring only within allowed hours, vehicle idling minimized etc.) | Yes |
| I. Was existing vehicle and trail access maintained? | Yes |
| J. Did any health and safety incidents occur? | No |
| K. Were there any public complaints? | No |
| L. Was the project shut down for any reason today? | No |
| M. Were there any other incidents to report? | No |
-

Environmental Resources

Monitor: Ron Walker

Compliance Level: In Compliance

- | | |
|---|-----|
| A. Were all active work areas and access roads clearly marked with staking or flagging? | Yes |
| B. Did all vehicles and personnel stay in approved work areas? | Yes |
| C. Was fire suppression equipment within 50 feet of each active work area? | Yes |
| D. Were all construction activities completed between 7:00 a.m. and 7:00 p.m.? | Yes |

Salt Creek Daily Inspection

Monitor Date: 11/3/2016

Biological Resources

Monitor: Ron Walker

Compliance Level: In Compliance

- | | |
|--|-----|
| A. Were all work activities conducted outside of any established nesting bird buffer, active nests and/or burrows? | Yes |
| B. Were all equipment/vehicles that arrived on site clean and free of vegetative debris/soil? | Yes |
| C. Were any special-status species observed? | No |
| D. Did work activities occur in or adjacent to known locations of Special status plants?
non | Yes |
| E. Did any construction activity occur within an ESA? | No |
| F. Was the work area surveyed for sensitive species immediately prior to ground-disturbing or vegetation removal activities? | Yes |
| G. Are all open excavations/trenches inspected for entrapped wildlife at least twice daily? | Yes |
| H. Are all large/steep excavations/trenches covered and/or fenced nightly? | Yes |
| I. Are excavations covered or equipped with earthen wildlife escape ramps by the end of the day? | Yes |

Cultural Resources

No Cultural Data Collected

Paleontological Resources

Monitor: Jen DiCenzo

Compliance Level: In Compliance

- | | |
|---|-----|
| A. Were ground disturbing activities conducted within a paleontological sensitive area?
No new discoveries | Yes |
| B. Were any paleontological materials identified? | No |
| C. Were any paleontological materials damaged or destroyed? | No |

Salt Creek Daily Inspection

Monitor Date: 11/3/2016

Dust Control

Monitor: Ron Walker

Compliance Level: In Compliance

- | | |
|---|-----|
| A. Are materials carried off site covered or watered prior to leaving site? | N/A |
| B. Are exposed stockpiles of dirt covered or watered to control fugitive dust | Yes |
| C. Is all soil material tracked onto paved public roads swept daily? | Yes |
| D. Are all work areas and access roads watered daily if there is persistent fugitive dust is visible beyond the work area boundaries? | Yes |
| E. Are all loads covered or have a minimum of two feet of freeboard? | Yes |
| F. If sustained winds of 20 mph or greater are experienced, were soil disturbing activities terminated? | N/A |
| G. Are rock aprons or rattle/shaker plates installed at the intersections of dirt access routes and paved public roadways? | Yes |
-

Erosion and Sediment

Monitor: Ron Walker

Compliance Level: In Compliance

- | | |
|--|-----|
| A. Are there sufficient quantities of erosion control materials stockpiled at the construction site? | Yes |
| B. Are all locations of temporary stockpiles in approved areas and appropriately protected? | Yes |
| C. Were any rolled erosion control products used? | Yes |
| D. Were rolled erosion products comprised of entirely natural fiber biodegradable materials? | Yes |
-

Hazardous Substances

Monitor: Ron Walker

Compliance Level: In Compliance

- | | |
|--|-----|
| A. Is fueling conducted in appropriate areas with appropriate containment and spill materials? | Yes |
| B. Are vehicles and equipment checked for leaks? | Yes |
| C. Were any leaks observed? | No |
| D. Are spills cleaned up and disposed of properly? | Yes |
| E. Are clean-up materials available on site in case of a spill? | Yes |
| F. Was discolored or odiferous soil or groundwater encountered during excavation activities? | No |
-

Waste

Monitor: Ron Walker

Compliance Level: In Compliance

- | | |
|--|-----|
| A. Is project-generated litter removed from the construction site daily? | Yes |
| B. Are waste management receptacle levels appropriately maintained? | Yes |

Salt Creek Daily Inspection

Monitor Date: 11/4/2016

Weather Observations

Start Temperature: 57°F Midday Temperature: 82°F End Temperature: 77°F
Weather Conditions: Sunny
Precipitation: None
Cloud Cover: 5

Construction Details

Construction Start Time: 7:00 AM Construction End Time: 4:30 PM
Construction Activities
 Mobilize materials equipment or prepared work areas Installed aboveground facilities
 Cleared or trimmed vegetation Installed landscaping
 Conduct earthwork Demobilized materials equipment or cleaned up work areas
 Developed site drainage facilities
 Developed site surfaces
 Installed underground facilities
Was a safety check-in conducted? Y Approximate Number of Construction Personnel On-site: 46
General Notes/Comments 12kV getaway trench conduit installation, substation screen wall construction, substation pad grading, vault installation.

General Issues

Monitor: Ron Walker

A. Workplace limits verified and properly marked? Yes
B. All activities within approved workspace limits? Yes
C. Only approved access roads utilized for ingress and egress? Yes
D. Access road signs in place? Yes
E. Trash and debris contained and disposed of in proper manner? Yes
F. All crew on site displaying hard-hat decals from WEAP training? Yes
G. Speed limit observed by all project personnel? Yes
H. Was construction noise limited to maximum allowed levels (mufflers being used, construction occurring only within allowed hours, vehicle idling minimized etc.) Yes
I. Was existing vehicle and trail access maintained? Yes
J. Did any health and safety incidents occur? No
K. Were there any public complaints? No
L. Was the project shut down for any reason today? No
M. Were there any other incidents to report? No

Environmental Resources

Monitor: Ron Walker
Compliance Level: In Compliance

A. Were all active work areas and access roads clearly marked with staking or flagging? Yes
B. Did all vehicles and personnel stay in approved work areas? Yes
C. Was fire suppression equipment within 50 feet of each active work area? Yes
D. Were all construction activities completed between 7:00 a.m. and 7:00 p.m.? Yes

Salt Creek Daily Inspection

Monitor Date: 11/4/2016

Biological Resources

Monitor: Ron Walker

Compliance Level: In Compliance

- A. Were all work activities conducted outside of any established nesting bird buffer, active nests and/or burrows? Yes
- B. Were all equipment/vehicles that arrived on site clean and free of vegetative debris/soil? Yes
- C. Were any special-status species observed? No
- D. Did work activities occur in or adjacent to known locations of Special status plants? Yes
Known locations of special status plants exist outside and adjacent to the project limits. No work was conducted outside of the project limits.
- E. Did any construction activity occur within an ESA? No
- F. Was the work area surveyed for sensitive species immediately prior to ground-disturbing or vegetation removal activities? Yes
- G. Are all open excavations/trenches inspected for entrapped wildlife at least twice daily? Yes
- H. Are all large/steep excavations/trenches covered and/or fenced nightly? Yes
- I. Are excavations covered or equipped with earthen wildlife escape ramps by the end of the day? Yes

J. General Notes/Comments

Cultural Resources

No Cultural Data Collected

Paleontological Resources

No Paleontological Data Collected

Salt Creek Daily Inspection

Monitor Date: 11/4/2016

Dust Control

Monitor: Ron Walker

Compliance Level: In Compliance

- | | |
|---|-----|
| A. Are materials carried off site covered or watered prior to leaving site? | N/A |
| B. Are exposed stockpiles of dirt covered or watered to control fugitive dust | Yes |
| C. Is all soil material tracked onto paved public roads swept daily? | Yes |
| D. Are all work areas and access roads watered daily if there is persistent fugitive dust is visible beyond the work area boundaries? | Yes |
| E. Are all loads covered or have a minimum of two feet of freeboard? | Yes |
| F. If sustained winds of 20 mph or greater are experienced, were soil disturbing activities terminated? | N/A |
| G. Are rock aprons or rattle/shaker plates installed at the intersections of dirt access routes and paved public roadways? | Yes |
-

Erosion and Sediment

Monitor: Ron Walker

Compliance Level: In Compliance

- | | |
|--|-----|
| A. Are there sufficient quantities of erosion control materials stockpiled at the construction site? | Yes |
| B. Are all locations of temporary stockpiles in approved areas and appropriately protected? | Yes |
| C. Were any rolled erosion control products used? | Yes |
| D. Were rolled erosion products comprised of entirely natural fiber biodegradable materials? | Yes |
-

Hazardous Substances

Monitor: Ron Walker

Compliance Level: In Compliance

- | | |
|--|-----|
| A. Is fueling conducted in appropriate areas with appropriate containment and spill materials? | Yes |
| B. Are vehicles and equipment checked for leaks? | Yes |
| C. Were any leaks observed? | No |
| D. Are spills cleaned up and disposed of properly? | Yes |
| E. Are clean-up materials available on site in case of a spill? | Yes |
| F. Was discolored or odiferous soil or groundwater encountered during excavation activities? | No |
-

Waste

Monitor: Ron Walker

Compliance Level: In Compliance

- | | |
|--|-----|
| A. Is project-generated litter removed from the construction site daily? | Yes |
| B. Are waste management receptacle levels appropriately maintained? | Yes |

Salt Creek Daily Inspection

Monitor Date: 11/5/2016

Weather Observations

Start Temperature: 55°F Midday Temperature: 72°F End Temperature: 72°F
Weather Conditions: Sunny
Precipitation: None
Cloud Cover: 0

Construction Details

Construction Start Time: 8:00 AM Construction End Time: 1:15 PM
Construction Activities
 Mobilize materials equipment or prepared work areas Installed aboveground facilities
 Cleared or trimmed vegetation Installed landscaping
 Conduct earthwork Demobilized materials equipment or cleaned up work areas
 Developed site drainage facilities SDGE conducted electric resistance testing in substation pad area
 Developed site surfaces
 Installed underground facilities
Was a safety check-in conducted? Y Approximate Number of Construction Personnel On-site: 5
General Notes/Comments SDGE conducted electric resistance testing in substation pad area. 5 personnel on site, no earth moving activities occurred.

General Issues

Monitor: Ron Walker

A. Workplace limits verified and properly marked? **Yes**

B. All activities within approved workspace limits? **Yes**

C. Only approved access roads utilized for ingress and egress? **Yes**

D. Access road signs in place? **Yes**

E. Trash and debris contained and disposed of in proper manner? **Yes**

F. All crew on site displaying hard-hat decals from WEAP training? **Yes**

G. Speed limit observed by all project personnel? **Yes**

H. Was construction noise limited to maximum allowed levels (mufflers being used, construction occurring only within allowed hours, vehicle idling minimized etc.) **Yes**

I. Was existing vehicle and trail access maintained? **Yes**

J. Did any health and safety incidents occur? **No**

K. Were there any public complaints? **No**

L. Was the project shut down for any reason today? **No**

M. Were there any other incidents to report? **No**

Environmental Resources

Monitor: Ron Walker

Compliance Level: In Compliance

A. Were all active work areas and access roads clearly marked with staking or flagging? **Yes**

B. Did all vehicles and personnel stay in approved work areas? **Yes**

C. Was fire suppression equipment within 50 feet of each active work area? **Yes**

D. Were all construction activities completed between 7:00 a.m. and 7:00 p.m.? **Yes**

Salt Creek Daily Inspection

Monitor Date: 11/5/2016

Biological Resources

Monitor: Ron Walker

Compliance Level: In Compliance

- | | |
|---|-----|
| A. Were all work activities conducted outside of any established nesting bird buffer, active nests and/or burrows? | Yes |
| B. Were all equipment/vehicles that arrived on site clean and free of vegetative debris/soil? | Yes |
| C. Were any special-status species observed? | No |
| D. Did work activities occur in or adjacent to known locations of Special status plants?
Known locations of special status plant species occur outside and adjacent to project limits. No work was conducted outside project limits. | Yes |
| E. Did any construction activity occur within an ESA? | No |
| F. Was the work area surveyed for sensitive species immediately prior to ground-disturbing or vegetation removal activities? | Yes |
| G. Are all open excavations/trenches inspected for entrapped wildlife at least twice daily? | Yes |
| H. Are all large/steep excavations/trenches covered and/or fenced nightly? | Yes |
| I. Are excavations covered or equipped with earthen wildlife escape ramps by the end of the day? | Yes |

Cultural Resources

No Cultural Data Collected

Paleontological Resources

No Paleontological Data Collected

Salt Creek Daily Inspection

Monitor Date: 11/5/2016

Dust Control

Monitor: Ron Walker

Compliance Level: In Compliance

- | | |
|---|-----|
| A. Are materials carried off site covered or watered prior to leaving site? | N/A |
| B. Are exposed stockpiles of dirt covered or watered to control fugitive dust | N/A |
| C. Is all soil material tracked onto paved public roads swept daily? | N/A |
| D. Are all work areas and access roads watered daily if there is persistent fugitive dust is visible beyond the work area boundaries? | N/A |
| E. Are all loads covered or have a minimum of two feet of freeboard? | N/A |
| F. If sustained winds of 20 mph or greater are experienced, were soil disturbing activities terminated? | N/A |
| G. Are rock aprons or rattle/shaker plates installed at the intersections of dirt access routes and paved public roadways? | Yes |
-

Erosion and Sediment

Monitor: Ron Walker

Compliance Level: In Compliance

- | | |
|--|-----|
| A. Are there sufficient quantities of erosion control materials stockpiled at the construction site? | Yes |
| B. Are all locations of temporary stockpiles in approved areas and appropriately protected? | Yes |
| C. Were any rolled erosion control products used? | No |
| D. Were rolled erosion products comprised of entirely natural fiber biodegradable materials? | N/A |
-

Hazardous Substances

Monitor: Ron Walker

Compliance Level: In Compliance

- | | |
|--|-----|
| A. Is fueling conducted in appropriate areas with appropriate containment and spill materials? | N/A |
| B. Are vehicles and equipment checked for leaks? | Yes |
| C. Were any leaks observed? | No |
| D. Are spills cleaned up and disposed of properly? | Yes |
| E. Are clean-up materials available on site in case of a spill? | Yes |
| F. Was discolored or odiferous soil or groundwater encountered during excavation activities? | No |
-

Waste

Monitor: Ron Walker

Compliance Level: In Compliance

- | | |
|--|-----|
| A. Is project-generated litter removed from the construction site daily? | Yes |
| B. Are waste management receptacle levels appropriately maintained? | Yes |

ATTACHMENT C: MMCRP CHECKLIST

SALT CREEK SUBSTATION PROJECT

Weekly MMRP Checklist

Completed by: Ron Walker
 Organization: AECOM
 Position: LEI

Day of the Week	Mon	Tue	Wed	Thu	Fri	Sat	Sun
Date (mm/dd/yy)	10/31/16	11/1/16	11/2/16	11/3/16	11/4/16	11/5/16	
A. Daily Work Hours and Workforce							
Start Time (hh:mm am/pm)	7:00 am	7:00 am	7:00 am	7:00 am	7:00 am	8:00 am	
Stop Time	3:30 pm	5:30 pm	5:00 pm	3:45 pm	4:30 pm	1:15 pm	
Construction Personnel Onsite	30	35	40	42	46	5	
Compliance Personnel Onsite	2	2	2	2	2	1	
Total Personnel Onsite	32	37	42	44	48	6	0
B. Daily Construction Activities – Check only if applicable							
1. Mobilized materials/equipment or prepared work areas	<input checked="" type="checkbox"/>	<input checked="" type="checkbox"/>	<input checked="" type="checkbox"/>	<input checked="" type="checkbox"/>	<input checked="" type="checkbox"/>	<input checked="" type="checkbox"/>	<input type="checkbox"/>
2. Cleared or trimmed vegetation	<input type="checkbox"/>	<input type="checkbox"/>	<input type="checkbox"/>	<input type="checkbox"/>	<input type="checkbox"/>	<input type="checkbox"/>	<input type="checkbox"/>
3. Conducted earthwork (grading, trenching, or other ground disturbance)	<input checked="" type="checkbox"/>	<input checked="" type="checkbox"/>	<input checked="" type="checkbox"/>	<input checked="" type="checkbox"/>	<input checked="" type="checkbox"/>	<input type="checkbox"/>	<input type="checkbox"/>
4. Developed site surfaces (substation pad or access roads)	<input checked="" type="checkbox"/>	<input checked="" type="checkbox"/>	<input checked="" type="checkbox"/>	<input checked="" type="checkbox"/>	<input checked="" type="checkbox"/>	<input checked="" type="checkbox"/>	<input type="checkbox"/>
5. Developed site drainage facilities	<input checked="" type="checkbox"/>	<input checked="" type="checkbox"/>	<input checked="" type="checkbox"/>	<input checked="" type="checkbox"/>	<input checked="" type="checkbox"/>	<input type="checkbox"/>	<input type="checkbox"/>
6. Installed underground facilities	<input type="checkbox"/>	<input type="checkbox"/>	<input type="checkbox"/>	<input type="checkbox"/>	<input type="checkbox"/>	<input type="checkbox"/>	<input type="checkbox"/>
7. Installed aboveground facilities	<input type="checkbox"/>	<input type="checkbox"/>	<input type="checkbox"/>	<input type="checkbox"/>	<input type="checkbox"/>	<input type="checkbox"/>	<input type="checkbox"/>
8. Installed landscaping	<input type="checkbox"/>	<input type="checkbox"/>	<input type="checkbox"/>	<input type="checkbox"/>	<input type="checkbox"/>	<input type="checkbox"/>	<input type="checkbox"/>
9. Demobilized materials/equipment or cleaned up work areas	<input type="checkbox"/>	<input type="checkbox"/>	<input type="checkbox"/>	<input type="checkbox"/>	<input type="checkbox"/>	<input type="checkbox"/>	<input type="checkbox"/>
10. Other	<input type="checkbox"/>	<input type="checkbox"/>	<input type="checkbox"/>	<input type="checkbox"/>	<input type="checkbox"/>	<input type="checkbox"/>	<input type="checkbox"/>
C. Daily Compliance Activities – Check only if applicable and implemented adequately without incident							
Avoidance and Minimization, and General Monitoring							
1. Limited activities to approved work areas and access roads (APM BIO-2 and MM Biology-1a)	<input checked="" type="checkbox"/>	<input checked="" type="checkbox"/>	<input checked="" type="checkbox"/>	<input checked="" type="checkbox"/>	<input checked="" type="checkbox"/>	<input checked="" type="checkbox"/>	<input type="checkbox"/>
2. Limited dust generation and emissions to required thresholds (APM AIR-1, APM AIR-2, MM Air-1, MM Biology-1a, and MM GHG-1)	<input checked="" type="checkbox"/>	<input checked="" type="checkbox"/>	<input checked="" type="checkbox"/>	<input checked="" type="checkbox"/>	<input checked="" type="checkbox"/>	<input checked="" type="checkbox"/>	<input type="checkbox"/>
3. Avoided sensitive plant habitat (APM BIO-2, MM Biology-1a, MM Biology-2, and MM Biology-9)	<input checked="" type="checkbox"/>	<input checked="" type="checkbox"/>	<input checked="" type="checkbox"/>	<input checked="" type="checkbox"/>	<input checked="" type="checkbox"/>	<input checked="" type="checkbox"/>	<input type="checkbox"/>
4. Avoided sensitive wildlife habitat (APM BIO-3, MM Biology-1a, MM Biology-7, and MM Biology-8)	<input checked="" type="checkbox"/>	<input checked="" type="checkbox"/>	<input checked="" type="checkbox"/>	<input checked="" type="checkbox"/>	<input checked="" type="checkbox"/>	<input checked="" type="checkbox"/>	<input type="checkbox"/>
5. Avoided active bird nests or burrows (APM BIO-1, APM BIO-2, MM Biology-1a, and MM Biology-6)	<input checked="" type="checkbox"/>	<input checked="" type="checkbox"/>	<input checked="" type="checkbox"/>	<input checked="" type="checkbox"/>	<input checked="" type="checkbox"/>	<input checked="" type="checkbox"/>	<input type="checkbox"/>
6. Avoided sensitive water features and aquatic habitat (APM HAZ-1, MM Biology-1a, and APM HYDRO-2)	<input checked="" type="checkbox"/>	<input checked="" type="checkbox"/>	<input checked="" type="checkbox"/>	<input checked="" type="checkbox"/>	<input checked="" type="checkbox"/>	<input checked="" type="checkbox"/>	<input type="checkbox"/>
7. Installed/maintained erosion or sediment controls (APM BIO-2, APM BIO-4, MM Biology-1a, MM Geology-1, APM HYDRO-1, and MM Hydro-2)	<input checked="" type="checkbox"/>	<input checked="" type="checkbox"/>	<input checked="" type="checkbox"/>	<input checked="" type="checkbox"/>	<input checked="" type="checkbox"/>	<input checked="" type="checkbox"/>	<input type="checkbox"/>
8. Implemented invasive weed measures (MM Biology-3)	<input checked="" type="checkbox"/>	<input checked="" type="checkbox"/>	<input checked="" type="checkbox"/>	<input checked="" type="checkbox"/>	<input checked="" type="checkbox"/>	<input checked="" type="checkbox"/>	<input type="checkbox"/>

Weekly MMCRP Checklist

Day of the Week	Mon	Tue	Wed	Thu	Fri	Sat	Sun
Dates	10/31/16	11/1/16	11/2/16	11/3/16	11/4/16	11/5/16	
9. Managed hazardous materials and waste (APM BIO-2, MM Biology-1a, APM HAZ-1, and APM HAZ-2)	<input checked="" type="checkbox"/>	<input checked="" type="checkbox"/>	<input checked="" type="checkbox"/>	<input checked="" type="checkbox"/>	<input checked="" type="checkbox"/>	<input checked="" type="checkbox"/>	<input type="checkbox"/>
10. Implemented fire prevention measures (MM Biology-1a, APM HAZ-3, and MM Hazards-2)	<input checked="" type="checkbox"/>	<input checked="" type="checkbox"/>	<input checked="" type="checkbox"/>	<input checked="" type="checkbox"/>	<input checked="" type="checkbox"/>	<input checked="" type="checkbox"/>	<input type="checkbox"/>
11. Avoided known cultural, paleontological, and tribal resources (APM CUL-2, APM CUL-7, MM Cultural Resources-1, MM Cultural Resources-2, MM Cultural Resources-3, MM Cultural Resources-4, and MM Cultural Paleontology-1)	<input checked="" type="checkbox"/>	<input checked="" type="checkbox"/>	<input checked="" type="checkbox"/>	<input checked="" type="checkbox"/>	<input checked="" type="checkbox"/>	<input checked="" type="checkbox"/>	<input type="checkbox"/>
12. Limited construction noise to maximum levels (APM NOISE-1, APM NOISE-3, MM Noise-1, and MM Noise-2)	<input checked="" type="checkbox"/>	<input checked="" type="checkbox"/>	<input checked="" type="checkbox"/>	<input checked="" type="checkbox"/>	<input checked="" type="checkbox"/>	<input checked="" type="checkbox"/>	<input type="checkbox"/>
13. Maintain existing vehicle and trail access (APM REC-1, MM Recreation-2, APM TRANS-1, and MM Traffic-3)	<input checked="" type="checkbox"/>	<input checked="" type="checkbox"/>	<input checked="" type="checkbox"/>	<input checked="" type="checkbox"/>	<input checked="" type="checkbox"/>	<input checked="" type="checkbox"/>	<input type="checkbox"/>
14. Provided workers with required environmental trainings (APM BIO-1, APM BIO-2, MM Biology-1a, APM CUL-1, APM GHG-1, APM HAZ-1, APM HAZ-3, and APM HYDRO-1)	<input checked="" type="checkbox"/>	<input checked="" type="checkbox"/>	<input checked="" type="checkbox"/>	<input checked="" type="checkbox"/>	<input checked="" type="checkbox"/>	<input checked="" type="checkbox"/>	<input type="checkbox"/>
15. Implemented MMCRP procedures	<input checked="" type="checkbox"/>	<input checked="" type="checkbox"/>	<input checked="" type="checkbox"/>	<input checked="" type="checkbox"/>	<input checked="" type="checkbox"/>	<input checked="" type="checkbox"/>	<input type="checkbox"/>
SDG&E Specialty Monitoring							
16. Special-status wildlife (APM BIO-2, MM Biology-1a, MM Biology-7, and MM Biology-8)	<input checked="" type="checkbox"/>	<input checked="" type="checkbox"/>	<input checked="" type="checkbox"/>	<input checked="" type="checkbox"/>	<input checked="" type="checkbox"/>	<input checked="" type="checkbox"/>	<input type="checkbox"/>
17. Nesting birds/burrowing owls (APM BIO-1 and MM Biology-6)	<input checked="" type="checkbox"/>	<input checked="" type="checkbox"/>	<input checked="" type="checkbox"/>	<input checked="" type="checkbox"/>	<input checked="" type="checkbox"/>	<input checked="" type="checkbox"/>	<input type="checkbox"/>
18. Special-status plants (APM BIO-2, MM Biology-1a, MM Biology-3, and MM Biology-1b)	<input checked="" type="checkbox"/>	<input checked="" type="checkbox"/>	<input checked="" type="checkbox"/>	<input checked="" type="checkbox"/>	<input checked="" type="checkbox"/>	<input checked="" type="checkbox"/>	<input type="checkbox"/>
19. Aquatic/hydrologic resources (APM HYDRO-1 and MM Geology-1)	<input checked="" type="checkbox"/>	<input checked="" type="checkbox"/>	<input checked="" type="checkbox"/>	<input checked="" type="checkbox"/>	<input checked="" type="checkbox"/>	<input checked="" type="checkbox"/>	<input type="checkbox"/>
20. SWPPP/reclamation (APM HYDRO-1, MM Geology-1, and MM Biology-1)	<input checked="" type="checkbox"/>	<input checked="" type="checkbox"/>	<input checked="" type="checkbox"/>	<input checked="" type="checkbox"/>	<input checked="" type="checkbox"/>	<input checked="" type="checkbox"/>	<input type="checkbox"/>
21. Cultural resources (APM CUL-2, MM Cultural Resources-1, MM Cultural Resources-2, and MM Cultural Resources-3)	<input checked="" type="checkbox"/>	<input checked="" type="checkbox"/>	<input checked="" type="checkbox"/>	<input checked="" type="checkbox"/>	<input checked="" type="checkbox"/>	<input checked="" type="checkbox"/>	<input type="checkbox"/>
22. Paleontological resources (APM CUL-5, APM CUL-6, and MM Paleontology 1)	<input checked="" type="checkbox"/>	<input checked="" type="checkbox"/>	<input checked="" type="checkbox"/>	<input checked="" type="checkbox"/>	<input checked="" type="checkbox"/>	<input checked="" type="checkbox"/>	<input type="checkbox"/>
23. Tribal resources (MM Cultural Resources-4)	<input checked="" type="checkbox"/>	<input checked="" type="checkbox"/>	<input checked="" type="checkbox"/>	<input checked="" type="checkbox"/>	<input checked="" type="checkbox"/>	<input checked="" type="checkbox"/>	<input type="checkbox"/>
24. Fire management (APM HAZ-3)	<input checked="" type="checkbox"/>	<input checked="" type="checkbox"/>	<input checked="" type="checkbox"/>	<input checked="" type="checkbox"/>	<input checked="" type="checkbox"/>	<input checked="" type="checkbox"/>	<input type="checkbox"/>
D. SDG&E Record of Weekly Incidents							
Compliance Level 1: Occurrences	0	1	0	0	0	0	
Compliance Level 2: Minor Problems	0	0	0	0	0	0	
Compliance Level 3: Compliance Issues	0	0	0	0	0	0	
Compliance Level 4: Noncompliances	0	0	0	0	0	0	
Total Compliance Level Incidents	0	1	0	0	0	0	0
Health and Safety Incidents	0	0	0	0	0	0	
Public Complaints	0	0	0	0	0	0	
Total Incidents	0	1	0	0	0	0	0

**ATTACHMENT D: COURTESY NOTICE TO
SAN DIEGO REGIONAL WATER QUALITY CONTROL BOARD**

From: Phan, Andrew
Sent: Friday, November 04, 2016 10:36 AM
To: 'Whitney.Ghoram@waterboards.ca.gov'; 'bsalem@chulavistaca.gov'
Cc: Gaters, Willie; Navrozali, Hashim; Cuppage, Keri A
Subject: Courtesy Notification: WDID#: 9 37C375119 Salt Creek Substation

Boushra and Whitney,

This is a courtesy notification for the Salt Creek Substation project with WDID#: 9 37C375119. The Salt Creek Substation is a new substation build project.

A Geo Pacific crew broke a recycled water line pipe at approximately 2 pm on November 1, 2016. The crew immediately stopped work to shut down the valve and stop the discharge of water. The water main was shut off immediately. Repair of the water line was completed by approximately 4 pm on the same day and then returned to service.

Approximately 150 gallons spilled onto the asphalt and soil within the project area, with half of the water getting into the adjacent V-ditch where check dams stopped it from discharging offsite. All recycled water stayed within the onsite drainage and did not enter any storm drain inlets or discharge offsite.

Existing check dams in the V-ditch were in place before the break. The recycled water was allowed to evaporate and no clean-up was necessary as this water is authorized for onsite dust control.

Andrew H. Phan

Environmental Specialist
Water and Air
SDGE Environmental Programs
CP21E
Office: 858-637-3715
Cell: 619-247-8329
aphan@semprautilities.com

Courtesy Notice Email Photo Attachments







Salt Creek Substation Project
WEEKLY ENVIRONMENTAL COMPLIANCE REPORT
November 7 – November 10, 2016

INTRODUCTION

This report provides an overview of construction progress and applicant-proposed measure (APM) and mitigation measure (MM) implementation during construction of the San Diego Gas & Electric Company (SDG&E) Salt Creek Substation Project (Project) during the week ending on November 10, 2016. Work on the Project was conducted by SDG&E, Geo Pacific Services, Inc. (GeoPac), Suffolk, and their construction subcontractors.

CONSTRUCTION OVERVIEW

On June 21, 2016, the California Public Utilities Commission (CPUC) issued a Notice to Proceed for construction of the Project. Construction of the Salt Creek Substation kicked off on July 18, 2016. During this reporting period, construction activities occurred November 7, 2016 through November 10, 2016 and are listed in the following section by Project component. A Lead Environmental Inspector (LEI) was on-site November 7 – November 10.

CONSTRUCTION ACTIVITIES

Salt Creek Substation

Construction activities during this reporting period included mobilization, conducting earthwork, installation of additional BMPs, developing site surfaces, trenching and concrete pour for 12kV conduit, excavation of holes for 12kV vaults in front of sub-station and placement of concrete vaults in excavated holes, application of water proofing on the masonry wall, water tie-in on Hunte Parkway for project hydrant, preparation of slopes around the bio-retention basin, and excavation and concrete formwork for oil catch basin. In addition, construction activities included the mobilization of Suffolk, the below grade contractor, who is conducting work within the substation pad area. This week Suffolk began excavations and concrete formwork for the substation pads.

WORKER ENVIRONMENTAL AWARENESS PROGRAM

Approximately 16 new project personnel attended the required environmental training as part of the Project Worker Environmental Awareness Program (WEAP). To date, approximately 285 Project personnel have received the required environmental awareness education.

ENVIRONMENTAL COMPLIANCE SUMMARY

The following subsections provide an assessment of environmental resources and a summary of the APMs, MMs, and permit conditions that were implemented during the week ending on November 10, 2016.

Air Quality

During earth moving activities a water truck was used to control dust. During this reporting period all pavement was kept clean. No winds occurred that were higher than 20 mph.

Biological Resources

During this monitoring period, construction occurred within the project limits of disturbance, adjacent to, but not within the special status plant locations. No special-status species were observed during the monitoring period.

Cultural and Paleontological Resources

Cultural and Native American monitors were not on-site during construction activities from November 7 through November 10, 2016. During this reporting period, excavation was limited to fill material, and native material previously graded to at least 10-feet below the surface, where the potential for impacts to cultural and archaeological resources was extremely low. Cultural and Native American monitors were on-call each day of construction, but were not called to the site. A paleontological monitor was on-site during construction activities from November 7 through November 10, 2016.

Hazardous Materials and Waste

All fueling was conducted in appropriate areas and all vehicles and equipment were checked for leaks. Two fuel spills or leaks were observed during this reporting period.

On November 8, 2016, a small fuel (gasoline) spill was reported to the LEI. The spill was approximately one half cup of fuel that fell onto the soil. The stained soil was immediately removed and placed in a 55-gallon metal barrel following project requirements.

On November 9, 2016, a small hydraulic fluid spill was reported to the LEI. The spill was approximately one cup of fluid that fell onto class II base rock in the substation pad area. The stained rock was immediately removed and placed in a 55-gallon metal barrel following project requirements.

Noise

Construction activities during this reporting period were confined to Monday through Thursday and occurred between 7:00 a.m. and 7:00 p.m. No work occurred on Friday and Saturday.

Traffic and Transportation

The traffic control plan approved by the City of Chula Vista was implemented and general traffic measures were adhered to. The majority of project personnel are parking their personal vehicles within a designated personal vehicle parking area within the project limits and established parking area adjacent to the southeast corner of the project limits.

Storm Water Compliance

During this reporting period, the project SWPPP and BMPs were implemented in accordance with the SDG&E Water Quality Construction BMP Manual. Permanent slopes within the project site were sprayed with BFM during the week of October 10 through October 15, 2016. The Qualified SWPPP Practitioner inspected the site on November 9, 2016 for the Weekly SWPPP Inspection. No BMP deficiencies were observed during the inspection.

Non-Compliances

The observations of the two fuel spills on November 7 and 8, 2016 were each reported as a Level 1: Occurrence. The spills were contained, removed, disposed of and reported; all project requirements were followed adequately. The occurrences did not put any resources at risk (i.e., air quality, water quality, vegetation, or wildlife).

ATTACHMENT A: PHOTOGRAPHS



**Salt Creek Substation Project
ENVIRONMENTAL COMPLIANCE STATUS REPORT
Attachment A: Photographs**



Photograph 1:
Excavation of trenches for 12 kV conduit occurred during the week of November 7, 2016.



Photograph 2:
Concrete formwork for the oil-catch basin occurred during the week of November 7, 2016.



Photograph 3:

Construction of concrete forms for pads in substation area occurred during the week of November 7, 2016.



Photograph 4:

Construction of concrete forms for the curb and gutter on Road A occurred during the week of November 7, 2016.

ATTACHMENT B: DAILY LOGS

Salt Creek Daily Inspection

Monitor Date: 11/7/2016

Weather Observations

Start Temperature: 57°F Midday Temperature: 73°F End Temperature: 70°F
Weather Conditions: Sunny
Precipitation: None
Cloud Cover: 0

Construction Details

Construction Start Time: 7:00 AM Construction End Time: 4:30 PM

Construction Activities

- | | |
|---|---|
| <input checked="" type="checkbox"/> Mobilize materials equipment or prepared work areas | <input type="checkbox"/> Installed aboveground facilities |
| <input type="checkbox"/> Cleared or trimmed vegetation | <input type="checkbox"/> Installed landscaping |
| <input checked="" type="checkbox"/> Conduct earthwork | <input type="checkbox"/> Demobilized materials equipment or cleaned up work areas |
| <input checked="" type="checkbox"/> Developed site drainage facilities | |
| <input checked="" type="checkbox"/> Developed site surfaces | |
| <input checked="" type="checkbox"/> Installed underground facilities | |

Was a safety check-in conducted? Y Approximate Number of Construction Personnel On-site: 50

General Notes/Comments Masonry wall demobilization, excavation of trench for 12kV, beginning of below grade form work, slurry pour for the large vaults in front of substation, bio retention pond slope tracking and grading, WEAP training.

General Issues

Monitor: Ron Walker

- | | |
|--|-----|
| A. Workplace limits verified and properly marked? | Yes |
| B. All activities within approved workspace limits? | Yes |
| C. Only approved access roads utilized for ingress and egress? | Yes |
| D. Access road signs in place? | Yes |
| E. Trash and debris contained and disposed of in proper manner? | Yes |
| F. All crew on site displaying hard-hat decals from WEAP training? | Yes |
| G. Speed limit observed by all project personnel? | Yes |
| H. Was construction noise limited to maximum allowed levels (mufflers being used, construction occurring only within allowed hours, vehicle idling minimized etc.) | Yes |
| I. Was existing vehicle and trail access maintained? | Yes |
| J. Did any health and safety incidents occur? | No |
| K. Were there any public complaints? | No |
| L. Was the project shut down for any reason today? | No |
| M. Were there any other incidents to report? | No |
-

Environmental Resources

Monitor: Ron Walker

Compliance Level: In Compliance

- | | |
|---|-----|
| A. Were all active work areas and access roads clearly marked with staking or flagging? | Yes |
| B. Did all vehicles and personnel stay in approved work areas? | Yes |
| C. Was fire suppression equipment within 50 feet of each active work area? | Yes |
| D. Were all construction activities completed between 7:00 a.m. and 7:00 p.m.? | Yes |

Salt Creek Daily Inspection

Monitor Date: 11/7/2016

Biological Resources

Monitor: Ron Walker

Compliance Level: In Compliance

- A. Were all work activities conducted outside of any established nesting bird buffer, active nests and/or burrows? Yes
- B. Were all equipment/vehicles that arrived on site clean and free of vegetative debris/soil? Yes
- C. Were any special-status species observed? No
- D. Did work activities occur in or adjacent to known locations of Special status plants? Yes
Known locations of special status plants exist outside and adjacent to the project limits. No work was conducted outside of the project limits.
- E. Did any construction activity occur within an ESA? No
- F. Was the work area surveyed for sensitive species immediately prior to ground-disturbing or vegetation removal activities? Yes
- G. Are all open excavations/trenches inspected for entrapped wildlife at least twice daily? Yes
- H. Are all large/steep excavations/trenches covered and/or fenced nightly? Yes
- I. Are excavations covered or equipped with earthen wildlife escape ramps by the end of the day? Yes
-

Cultural Resources

No Cultural Data Collected

Paleontological Resources

Monitor: Jen DiCenzo

Compliance Level: In Compliance

- A. Were ground disturbing activities conducted within a paleontological sensitive area? Yes
No new discoveries
- B. Were any paleontological materials identified? No
- C. Were any paleontological materials damaged or destroyed? No

Salt Creek Daily Inspection

Monitor Date: 11/7/2016

Dust Control

Monitor: Ron Walker

Compliance Level: In Compliance

- | | |
|---|-----|
| A. Are materials carried off site covered or watered prior to leaving site? | Yes |
| B. Are exposed stockpiles of dirt covered or watered to control fugitive dust | Yes |
| C. Is all soil material tracked onto paved public roads swept daily? | Yes |
| D. Are all work areas and access roads watered daily if there is persistent fugitive dust is visible beyond the work area boundaries? | Yes |
| E. Are all loads covered or have a minimum of two feet of freeboard? | Yes |
| F. If sustained winds of 20 mph or greater are experienced, were soil disturbing activities terminated? | N/A |
| G. Are rock aprons or rattle/shaker plates installed at the intersections of dirt access routes and paved public roadways? | Yes |
-

Erosion and Sediment

Monitor: Ron Walker

Compliance Level: In Compliance

- | | |
|--|-----|
| A. Are there sufficient quantities of erosion control materials stockpiled at the construction site? | Yes |
| B. Are all locations of temporary stockpiles in approved areas and appropriately protected? | Yes |
| C. Were any rolled erosion control products used? | Yes |
| D. Were rolled erosion products comprised of entirely natural fiber biodegradable materials? | Yes |
-

Hazardous Substances

Monitor: Ron Walker

Compliance Level: In Compliance

- | | |
|--|-----|
| A. Is fueling conducted in appropriate areas with appropriate containment and spill materials? | Yes |
| B. Are vehicles and equipment checked for leaks? | Yes |
| C. Were any leaks observed? | No |
| D. Are spills cleaned up and disposed of properly? | Yes |
| E. Are clean-up materials available on site in case of a spill? | Yes |
| F. Was discolored or odiferous soil or groundwater encountered during excavation activities? | No |
-

Waste

Monitor: Ron Walker

Compliance Level: In Compliance

- | | |
|--|-----|
| A. Is project-generated litter removed from the construction site daily? | Yes |
| B. Are waste management receptacle levels appropriately maintained? | Yes |

Salt Creek Daily Inspection

Monitor Date: 11/8/2016

Weather Observations

Start Temperature: 64°F Midday Temperature: 90°F End Temperature: 84°F
Weather Conditions: Sunny
Precipitation: None
Cloud Cover: 0

Construction Details

Construction Start Time: 7:00 AM Construction End Time: 5:00 PM

Construction Activities

- | | |
|---|---|
| <input checked="" type="checkbox"/> Mobilize materials equipment or prepared work areas | <input type="checkbox"/> Installed aboveground facilities |
| <input type="checkbox"/> Cleared or trimmed vegetation | <input type="checkbox"/> Installed landscaping |
| <input checked="" type="checkbox"/> Conduct earthwork | <input type="checkbox"/> Demobilized materials equipment or cleaned up work areas |
| <input type="checkbox"/> Developed site drainage facilities | Construction trailer generator removed from project site on 11/8. |
| <input checked="" type="checkbox"/> Developed site surfaces | |
| <input checked="" type="checkbox"/> Installed underground facilities | |

Was a safety check-in conducted? Y Approximate Number of Construction Personnel On-site: 35

General Notes/Comments Masonry wall final details, road A curb and gutter work, trench and slurry work on 12 KV getaway, substation pad development, excavation for new vaults, generator was shut off on 11/7 and removed from site on 11/8.

General Issues

Monitor: Ron Walker

- | | |
|--|-----|
| A. Workplace limits verified and properly marked? | Yes |
| B. All activities within approved workspace limits? | Yes |
| C. Only approved access roads utilized for ingress and egress? | Yes |
| D. Access road signs in place? | Yes |
| E. Trash and debris contained and disposed of in proper manner? | Yes |
| F. All crew on site displaying hard-hat decals from WEAP training? | Yes |
| G. Speed limit observed by all project personnel? | Yes |
| H. Was construction noise limited to maximum allowed levels (mufflers being used, construction occurring only within allowed hours, vehicle idling minimized etc.) | Yes |
| I. Was existing vehicle and trail access maintained? | Yes |
| J. Did any health and safety incidents occur? | No |
| K. Were there any public complaints? | No |
| L. Was the project shut down for any reason today? | No |
| M. Were there any other incidents to report? | No |
-

Environmental Resources

Monitor: Ron Walker

Compliance Level: In Compliance

- | | |
|---|-----|
| A. Were all active work areas and access roads clearly marked with staking or flagging? | Yes |
| B. Did all vehicles and personnel stay in approved work areas? | Yes |
| C. Was fire suppression equipment within 50 feet of each active work area? | Yes |
| D. Were all construction activities completed between 7:00 a.m. and 7:00 p.m.? | Yes |

Salt Creek Daily Inspection

Monitor Date: 11/8/2016

Biological Resources

Monitor: Ron Walker

Compliance Level: In Compliance

- A. Were all work activities conducted outside of any established nesting bird buffer, active nests and/or burrows? Yes
- B. Were all equipment/vehicles that arrived on site clean and free of vegetative debris/soil? Yes
- C. Were any special-status species observed? No
- D. Did work activities occur in or adjacent to known locations of Special status plants? Yes
Known locations of special status plants exist outside and adjacent to the project limits. No work was conducted outside of the project limits.
- E. Did any construction activity occur within an ESA? No
- F. Was the work area surveyed for sensitive species immediately prior to ground-disturbing or vegetation removal activities? Yes
- G. Are all open excavations/trenches inspected for entrapped wildlife at least twice daily? Yes
- H. Are all large/steep excavations/trenches covered and/or fenced nightly? Yes
- I. Are excavations covered or equipped with earthen wildlife escape ramps by the end of the day? Yes
-

Cultural Resources

No Cultural Data Collected

Paleontological Resources

Monitor: Jen DiCenzo

Compliance Level: In Compliance

- A. Were ground disturbing activities conducted within a paleontological sensitive area? Yes
No new discoveries
- B. Were any paleontological materials identified? No
- C. Were any paleontological materials damaged or destroyed? No

Salt Creek Daily Inspection

Monitor Date: 11/8/2016

Dust Control

Monitor: Ron Walker

Compliance Level: In Compliance

- | | |
|---|-----|
| A. Are materials carried off site covered or watered prior to leaving site? | N/A |
| B. Are exposed stockpiles of dirt covered or watered to control fugitive dust | Yes |
| C. Is all soil material tracked onto paved public roads swept daily? | Yes |
| D. Are all work areas and access roads watered daily if there is persistent fugitive dust is visible beyond the work area boundaries? | Yes |
| E. Are all loads covered or have a minimum of two feet of freeboard? | Yes |
| F. If sustained winds of 20 mph or greater are experienced, were soil disturbing activities terminated? | N/A |
| G. Are rock aprons or rattle/shaker plates installed at the intersections of dirt access routes and paved public roadways? | Yes |
-

Erosion and Sediment

Monitor: Ron Walker

Compliance Level: In Compliance

- | | |
|--|-----|
| A. Are there sufficient quantities of erosion control materials stockpiled at the construction site? | Yes |
| B. Are all locations of temporary stockpiles in approved areas and appropriately protected? | Yes |
| C. Were any rolled erosion control products used? | Yes |
| D. Were rolled erosion products comprised of entirely natural fiber biodegradable materials? | Yes |
-

Hazardous Substances

Monitor: Ron Walker

Compliance Level: In Compliance

- | | |
|---|-----|
| A. Is fueling conducted in appropriate areas with appropriate containment and spill materials? | Yes |
| B. Are vehicles and equipment checked for leaks? | Yes |
| C. Were any leaks observed? | Yes |
| A small fuel (gasoline) spill of approximately one half cup fell onto the soil. The stained soil was immediately removed and placed in a 55-gallon metal barrel following project requirements. | |
| D. Are spills cleaned up and disposed of properly? | Yes |
| E. Are clean-up materials available on site in case of a spill? | Yes |
| F. Was discolored or odiferous soil or groundwater encountered during excavation activities? | No |
-

Waste

Monitor: Ron Walker

Compliance Level: In Compliance

- | | |
|--|-----|
| A. Is project-generated litter removed from the construction site daily? | Yes |
| B. Are waste management receptacle levels appropriately maintained? | Yes |

Salt Creek Daily Inspection

Monitor Date: 11/9/2016

Weather Observations

Start Temperature: 64°F Midday Temperature: 93°F End Temperature: 85°F
Weather Conditions: Windy
Precipitation: None
Cloud Cover: 0

Construction Details

Construction Start Time: 7:00 AM Construction End Time: 5:00 PM

Construction Activities

- | | |
|---|---|
| <input checked="" type="checkbox"/> Mobilize materials equipment or prepared work areas | <input type="checkbox"/> Installed aboveground facilities |
| <input type="checkbox"/> Cleared or trimmed vegetation | <input type="checkbox"/> Installed landscaping |
| <input checked="" type="checkbox"/> Conduct earthwork | <input type="checkbox"/> Demobilized materials equipment or cleaned up work areas |
| <input checked="" type="checkbox"/> Developed site drainage facilities | |
| <input checked="" type="checkbox"/> Developed site surfaces | |
| <input checked="" type="checkbox"/> Installed underground facilities | |

Was a safety check-in conducted? Y Approximate Number of Construction Personnel On-site: 35

General Notes/Comments Road A curb and gutter work, concrete pour for the catch basin, installed conduit for 12kv getaway, excavation for vault in front of the substation, and Suffolk building pads in substation area.

General Issues

Monitor: Ron Walker

- | | |
|--|-----|
| A. Workplace limits verified and properly marked? | Yes |
| B. All activities within approved workspace limits? | Yes |
| C. Only approved access roads utilized for ingress and egress? | Yes |
| D. Access road signs in place? | Yes |
| E. Trash and debris contained and disposed of in proper manner? | Yes |
| F. All crew on site displaying hard-hat decals from WEAP training? | Yes |
| G. Speed limit observed by all project personnel? | Yes |
| H. Was construction noise limited to maximum allowed levels (mufflers being used, construction occurring only within allowed hours, vehicle idling minimized etc.) | Yes |
| I. Was existing vehicle and trail access maintained? | Yes |
| J. Did any health and safety incidents occur? | No |
| K. Were there any public complaints? | No |
| L. Was the project shut down for any reason today? | No |
| M. Were there any other incidents to report? | No |
-

Environmental Resources

Monitor: Ron Walker

Compliance Level: In Compliance

- | | |
|---|-----|
| A. Were all active work areas and access roads clearly marked with staking or flagging? | Yes |
| B. Did all vehicles and personnel stay in approved work areas? | Yes |
| C. Was fire suppression equipment within 50 feet of each active work area? | Yes |
| D. Were all construction activities completed between 7:00 a.m. and 7:00 p.m.? | Yes |

Salt Creek Daily Inspection

Monitor Date: 11/9/2016

Biological Resources

Monitor: Ron Walker

Compliance Level: In Compliance

- A. Were all work activities conducted outside of any established nesting bird buffer, active nests and/or burrows? Yes
- B. Were all equipment/vehicles that arrived on site clean and free of vegetative debris/soil? Yes
- C. Were any special-status species observed? No
- D. Did work activities occur in or adjacent to known locations of Special status plants? Yes
Known locations of special status plants exist outside and adjacent to the project limits. No work was conducted outside of the project limits.
- E. Did any construction activity occur within an ESA? No
- F. Was the work area surveyed for sensitive species immediately prior to ground-disturbing or vegetation removal activities? Yes
- G. Are all open excavations/trenches inspected for entrapped wildlife at least twice daily? Yes
- H. Are all large/steep excavations/trenches covered and/or fenced nightly? Yes
- I. Are excavations covered or equipped with earthen wildlife escape ramps by the end of the day? Yes
-

Cultural Resources

No Cultural Data Collected

Paleontological Resources

Monitor: Jen DiCenzo

Compliance Level: In Compliance

- A. Were ground disturbing activities conducted within a paleontological sensitive area? Yes
No new discoveries
- B. Were any paleontological materials identified? No
- C. Were any paleontological materials damaged or destroyed? No

Salt Creek Daily Inspection

Monitor Date: 11/9/2016

Dust Control

Monitor: Ron Walker

Compliance Level: In Compliance

- | | |
|---|-----|
| A. Are materials carried off site covered or watered prior to leaving site? | N/A |
| B. Are exposed stockpiles of dirt covered or watered to control fugitive dust | Yes |
| C. Is all soil material tracked onto paved public roads swept daily? | Yes |
| D. Are all work areas and access roads watered daily if there is persistent fugitive dust is visible beyond the work area boundaries? | Yes |
| E. Are all loads covered or have a minimum of two feet of freeboard? | N/A |
| F. If sustained winds of 20 mph or greater are experienced, were soil disturbing activities terminated? | N/A |
| G. Are rock aprons or rattle/shaker plates installed at the intersections of dirt access routes and paved public roadways? | Yes |
-

Erosion and Sediment

Monitor: Ron Walker

Compliance Level: In Compliance

- | | |
|--|-----|
| A. Are there sufficient quantities of erosion control materials stockpiled at the construction site? | Yes |
| B. Are all locations of temporary stockpiles in approved areas and appropriately protected? | Yes |
| C. Were any rolled erosion control products used? | Yes |
| D. Were rolled erosion products comprised of entirely natural fiber biodegradable materials? | Yes |
-

Hazardous Substances

Monitor: Ron Walker

Compliance Level: In Compliance

- | | |
|--|-----|
| A. Is fueling conducted in appropriate areas with appropriate containment and spill materials? | Yes |
| B. Are vehicles and equipment checked for leaks? | Yes |
| C. Were any leaks observed?
A small spill, believed to be hydraulic fluid, was observed and reported on the class II base rock in the substation pad area. The stained rock was approximately 10 inches in diameter and was shoveled up and disposed of per project requirements. | Yes |
| D. Are spills cleaned up and disposed of properly? | Yes |
| E. Are clean-up materials available on site in case of a spill? | Yes |
| F. Was discolored or odiferous soil or groundwater encountered during excavation activities? | No |
-

Waste

Monitor: Ron Walker

Compliance Level: In Compliance

- | | |
|--|-----|
| A. Is project-generated litter removed from the construction site daily? | Yes |
| B. Are waste management receptacle levels appropriately maintained? | Yes |

Salt Creek Daily Inspection

Monitor Date: 11/10/2016

Weather Observations

Start Temperature: 77°F Midday Temperature: 89°F End Temperature: 84°F
Weather Conditions: Windy
Precipitation: None
Cloud Cover: 0

Construction Details

Construction Start Time: 7:00 AM Construction End Time: 5:00 PM

Construction Activities

- | | |
|---|---|
| <input checked="" type="checkbox"/> Mobilize materials equipment or prepared work areas | <input type="checkbox"/> Installed aboveground facilities |
| <input type="checkbox"/> Cleared or trimmed vegetation | <input type="checkbox"/> Installed landscaping |
| <input checked="" type="checkbox"/> Conduct earthwork | <input type="checkbox"/> Demobilized materials equipment or cleaned up work areas |
| <input checked="" type="checkbox"/> Developed site drainage facilities | |
| <input checked="" type="checkbox"/> Developed site surfaces | |
| <input type="checkbox"/> Installed underground facilities | |

Was a safety check-in conducted? Y Approximate Number of Construction Personnel On-site: 34

General Notes/Comments Excavating 69kV vaults, grading the substation pad, framing and pouring concrete for the control room pad, excavating 12kV getaway trench.

General Issues

Monitor: Ron Walker

- | | |
|--|-----|
| A. Workplace limits verified and properly marked? | Yes |
| B. All activities within approved workspace limits? | Yes |
| C. Only approved access roads utilized for ingress and egress? | Yes |
| D. Access road signs in place? | Yes |
| E. Trash and debris contained and disposed of in proper manner? | Yes |
| F. All crew on site displaying hard-hat decals from WEAP training? | Yes |
| G. Speed limit observed by all project personnel? | Yes |
| H. Was construction noise limited to maximum allowed levels (mufflers being used, construction occurring only within allowed hours, vehicle idling minimized etc.) | Yes |
| I. Was existing vehicle and trail access maintained? | Yes |
| J. Did any health and safety incidents occur? | No |
| K. Were there any public complaints? | No |
| L. Was the project shut down for any reason today? | No |
| M. Were there any other incidents to report? | No |
-

Environmental Resources

Monitor: Ron Walker

Compliance Level: In Compliance

- | | |
|---|-----|
| A. Were all active work areas and access roads clearly marked with staking or flagging? | Yes |
| B. Did all vehicles and personnel stay in approved work areas? | Yes |
| C. Was fire suppression equipment within 50 feet of each active work area? | Yes |
| D. Were all construction activities completed between 7:00 a.m. and 7:00 p.m.? | Yes |

Salt Creek Daily Inspection

Monitor Date: 11/10/2016

Biological Resources

Monitor: Ron Walker

Compliance Level: In Compliance

- A. Were all work activities conducted outside of any established nesting bird buffer, active nests and/or burrows? Yes
- B. Were all equipment/vehicles that arrived on site clean and free of vegetative debris/soil? Yes
- C. Were any special-status species observed? No
- D. Did work activities occur in or adjacent to known locations of Special status plants? Yes
Known locations of special status plant species occur outside and adjacent to project limits. No work was conducted outside project limits.
- E. Did any construction activity occur within an ESA? No
- F. Was the work area surveyed for sensitive species immediately prior to ground-disturbing or vegetation removal activities? Yes
- G. Are all open excavations/trenches inspected for entrapped wildlife at least twice daily? Yes
- H. Are all large/steep excavations/trenches covered and/or fenced nightly? Yes
- I. Are excavations covered or equipped with earthen wildlife escape ramps by the end of the day? Yes
-

Cultural Resources

No Cultural Data Collected

Paleontological Resources

Monitor: Jen DiCenzo

Compliance Level: In Compliance

- A. Were ground disturbing activities conducted within a paleontological sensitive area? Yes
No new discoveries
- B. Were any paleontological materials identified? No
- C. Were any paleontological materials damaged or destroyed? No

Salt Creek Daily Inspection

Monitor Date: 11/10/2016

Dust Control

Monitor: Ron Walker

Compliance Level: In Compliance

- | | |
|---|-----|
| A. Are materials carried off site covered or watered prior to leaving site? | N/A |
| B. Are exposed stockpiles of dirt covered or watered to control fugitive dust | Yes |
| C. Is all soil material tracked onto paved public roads swept daily? | Yes |
| D. Are all work areas and access roads watered daily if there is persistent fugitive dust is visible beyond the work area boundaries? | Yes |
| E. Are all loads covered or have a minimum of two feet of freeboard? | Yes |
| F. If sustained winds of 20 mph or greater are experienced, were soil disturbing activities terminated? | N/A |
| G. Are rock aprons or rattle/shaker plates installed at the intersections of dirt access routes and paved public roadways? | Yes |
-

Erosion and Sediment

Monitor: Ron Walker

Compliance Level: In Compliance

- | | |
|--|-----|
| A. Are there sufficient quantities of erosion control materials stockpiled at the construction site? | Yes |
| B. Are all locations of temporary stockpiles in approved areas and appropriately protected? | Yes |
| C. Were any rolled erosion control products used? | Yes |
| D. Were rolled erosion products comprised of entirely natural fiber biodegradable materials? | Yes |
-

Hazardous Substances

Monitor: Ron Walker

Compliance Level: In Compliance

- | | |
|--|-----|
| A. Is fueling conducted in appropriate areas with appropriate containment and spill materials? | Yes |
| B. Are vehicles and equipment checked for leaks? | Yes |
| C. Were any leaks observed? | No |
| D. Are spills cleaned up and disposed of properly? | Yes |
| E. Are clean-up materials available on site in case of a spill? | Yes |
| F. Was discolored or odiferous soil or groundwater encountered during excavation activities? | No |
-

Waste

Monitor: Ron Walker

Compliance Level: In Compliance

- | | |
|--|-----|
| A. Is project-generated litter removed from the construction site daily? | Yes |
| B. Are waste management receptacle levels appropriately maintained? | Yes |

ATTACHMENT C: MMCRP CHECKLIST

SALT CREEK SUBSTATION PROJECT

Weekly MMCRP Checklist

Completed by: Ron Walker

Organization: AECOM

Position: LEI

Day of the Week	Mon	Tue	Wed	Thu	Fri	Sat	Sun
Date (mm/dd/yy)	11/7/16	11/8/16	11/9/16	11/10/16			
A. Daily Work Hours and Workforce							
Start Time (hh:mm am/pm)	7:00 am	7:00 am	7:00 am	7:00 am			
Stop Time	4:30 pm	5:00 pm	5:00 pm	5:00 pm			
Construction Personnel Onsite	50	35	35	34			
Compliance Personnel Onsite	2	2	2	2			
Total Personnel Onsite	52	37	37	36	0	0	0
B. Daily Construction Activities – Check only if applicable							
1. Mobilized materials/equipment or prepared work areas	<input checked="" type="checkbox"/>	<input checked="" type="checkbox"/>	<input checked="" type="checkbox"/>	<input checked="" type="checkbox"/>	<input type="checkbox"/>	<input type="checkbox"/>	<input type="checkbox"/>
2. Cleared or trimmed vegetation	<input type="checkbox"/>	<input type="checkbox"/>	<input type="checkbox"/>	<input type="checkbox"/>	<input type="checkbox"/>	<input type="checkbox"/>	<input type="checkbox"/>
3. Conducted earthwork (grading, trenching, or other ground disturbance)	<input checked="" type="checkbox"/>	<input checked="" type="checkbox"/>	<input checked="" type="checkbox"/>	<input checked="" type="checkbox"/>	<input type="checkbox"/>	<input type="checkbox"/>	<input type="checkbox"/>
4. Developed site surfaces (substation pad or access roads)	<input checked="" type="checkbox"/>	<input checked="" type="checkbox"/>	<input checked="" type="checkbox"/>	<input checked="" type="checkbox"/>	<input type="checkbox"/>	<input type="checkbox"/>	<input type="checkbox"/>
5. Developed site drainage facilities	<input checked="" type="checkbox"/>	<input checked="" type="checkbox"/>	<input checked="" type="checkbox"/>	<input checked="" type="checkbox"/>	<input type="checkbox"/>	<input type="checkbox"/>	<input type="checkbox"/>
6. Installed underground facilities	<input checked="" type="checkbox"/>	<input checked="" type="checkbox"/>	<input checked="" type="checkbox"/>	<input checked="" type="checkbox"/>	<input type="checkbox"/>	<input type="checkbox"/>	<input type="checkbox"/>
7. Installed aboveground facilities	<input type="checkbox"/>	<input type="checkbox"/>	<input type="checkbox"/>	<input type="checkbox"/>	<input type="checkbox"/>	<input type="checkbox"/>	<input type="checkbox"/>
8. Installed landscaping	<input type="checkbox"/>	<input type="checkbox"/>	<input type="checkbox"/>	<input type="checkbox"/>	<input type="checkbox"/>	<input type="checkbox"/>	<input type="checkbox"/>
9. Demobilized materials/equipment or cleaned up work areas	<input type="checkbox"/>	<input type="checkbox"/>	<input type="checkbox"/>	<input type="checkbox"/>	<input type="checkbox"/>	<input type="checkbox"/>	<input type="checkbox"/>
10. Other	<input type="checkbox"/>	<input type="checkbox"/>	<input type="checkbox"/>	<input type="checkbox"/>	<input type="checkbox"/>	<input type="checkbox"/>	<input type="checkbox"/>
C. Daily Compliance Activities – Check only if applicable and implemented adequately without incident							
Avoidance and Minimization, and General Monitoring							
1. Limited activities to approved work areas and access roads (APM BIO-2 and MM Biology-1a)	<input checked="" type="checkbox"/>	<input checked="" type="checkbox"/>	<input checked="" type="checkbox"/>	<input checked="" type="checkbox"/>	<input type="checkbox"/>	<input type="checkbox"/>	<input type="checkbox"/>
2. Limited dust generation and emissions to required thresholds (APM AIR-1, APM AIR-2, MM Air-1, MM Biology-1a, and MM GHG-1)	<input checked="" type="checkbox"/>	<input checked="" type="checkbox"/>	<input checked="" type="checkbox"/>	<input checked="" type="checkbox"/>	<input type="checkbox"/>	<input type="checkbox"/>	<input type="checkbox"/>
3. Avoided sensitive plant habitat (APM BIO-2, MM Biology-1a, MM Biology-2, and MM Biology-9)	<input checked="" type="checkbox"/>	<input checked="" type="checkbox"/>	<input checked="" type="checkbox"/>	<input checked="" type="checkbox"/>	<input type="checkbox"/>	<input type="checkbox"/>	<input type="checkbox"/>
4. Avoided sensitive wildlife habitat (APM BIO-3, MM Biology-1a, MM Biology-7, and MM Biology-8)	<input checked="" type="checkbox"/>	<input checked="" type="checkbox"/>	<input checked="" type="checkbox"/>	<input checked="" type="checkbox"/>	<input type="checkbox"/>	<input type="checkbox"/>	<input type="checkbox"/>
5. Avoided active bird nests or burrows (APM BIO-1, APM BIO-2, MM Biology-1a, and MM Biology-6)	<input checked="" type="checkbox"/>	<input checked="" type="checkbox"/>	<input checked="" type="checkbox"/>	<input checked="" type="checkbox"/>	<input type="checkbox"/>	<input type="checkbox"/>	<input type="checkbox"/>
6. Avoided sensitive water features and aquatic habitat (APM HAZ-1, MM Biology-1a, and APM HYDRO-2)	<input checked="" type="checkbox"/>	<input checked="" type="checkbox"/>	<input checked="" type="checkbox"/>	<input checked="" type="checkbox"/>	<input type="checkbox"/>	<input type="checkbox"/>	<input type="checkbox"/>
7. Installed/maintained erosion or sediment controls (APM BIO-2, APM BIO-4, MM Biology-1a, MM Geology-1, APM HYDRO-1, and MM Hydro-2)	<input checked="" type="checkbox"/>	<input checked="" type="checkbox"/>	<input checked="" type="checkbox"/>	<input checked="" type="checkbox"/>	<input type="checkbox"/>	<input type="checkbox"/>	<input type="checkbox"/>
8. Implemented invasive weed measures (MM Biology-3)	<input checked="" type="checkbox"/>	<input checked="" type="checkbox"/>	<input checked="" type="checkbox"/>	<input checked="" type="checkbox"/>	<input type="checkbox"/>	<input type="checkbox"/>	<input type="checkbox"/>

Weekly MMCRP Checklist

Day of the Week	Mon	Tue	Wed	Thu	Fri	Sat	Sun
Dates	11/7/16	11/8/16	11/9/16	11/10/16			
9. Managed hazardous materials and waste (APM BIO-2, MM Biology-1a, APM HAZ-1, and APM HAZ-2)	<input checked="" type="checkbox"/>	<input checked="" type="checkbox"/>	<input checked="" type="checkbox"/>	<input checked="" type="checkbox"/>	<input type="checkbox"/>	<input type="checkbox"/>	<input type="checkbox"/>
10. Implemented fire prevention measures (MM Biology-1a, APM HAZ-3, and MM Hazards-2)	<input checked="" type="checkbox"/>	<input checked="" type="checkbox"/>	<input checked="" type="checkbox"/>	<input checked="" type="checkbox"/>	<input type="checkbox"/>	<input type="checkbox"/>	<input type="checkbox"/>
11. Avoided known cultural, paleontological, and tribal resources (APM CUL-2, APM CUL-7, MM Cultural Resources-1, MM Cultural Resources-2, MM Cultural Resources-3, MM Cultural Resources-4, and MM Cultural Paleontology-1)	<input checked="" type="checkbox"/>	<input checked="" type="checkbox"/>	<input checked="" type="checkbox"/>	<input checked="" type="checkbox"/>	<input type="checkbox"/>	<input type="checkbox"/>	<input type="checkbox"/>
12. Limited construction noise to maximum levels (APM NOISE-1, APM NOISE-3, MM Noise-1, and MM Noise-2)	<input checked="" type="checkbox"/>	<input checked="" type="checkbox"/>	<input checked="" type="checkbox"/>	<input checked="" type="checkbox"/>	<input type="checkbox"/>	<input type="checkbox"/>	<input type="checkbox"/>
13. Maintain existing vehicle and trail access (APM REC-1, MM Recreation-2, APM TRANS-1, and MM Traffic-3)	<input checked="" type="checkbox"/>	<input checked="" type="checkbox"/>	<input checked="" type="checkbox"/>	<input checked="" type="checkbox"/>	<input type="checkbox"/>	<input type="checkbox"/>	<input type="checkbox"/>
14. Provided workers with required environmental trainings (APM BIO-1, APM BIO-2, MM Biology-1a, APM CUL-1, APM GHG-1, APM HAZ-1, APM HAZ-3, and APM HYDRO-1)	<input checked="" type="checkbox"/>	<input checked="" type="checkbox"/>	<input checked="" type="checkbox"/>	<input checked="" type="checkbox"/>	<input type="checkbox"/>	<input type="checkbox"/>	<input type="checkbox"/>
15. Implemented MMCRP procedures	<input checked="" type="checkbox"/>	<input checked="" type="checkbox"/>	<input checked="" type="checkbox"/>	<input checked="" type="checkbox"/>	<input type="checkbox"/>	<input type="checkbox"/>	<input type="checkbox"/>
SDG&E Specialty Monitoring							
16. Special-status wildlife (APM BIO-2, MM Biology-1a, MM Biology-7, and MM Biology-8)	<input checked="" type="checkbox"/>	<input checked="" type="checkbox"/>	<input checked="" type="checkbox"/>	<input checked="" type="checkbox"/>	<input type="checkbox"/>	<input type="checkbox"/>	<input type="checkbox"/>
17. Nesting birds/burrowing owls (APM BIO-1 and MM Biology-6)	<input checked="" type="checkbox"/>	<input checked="" type="checkbox"/>	<input checked="" type="checkbox"/>	<input checked="" type="checkbox"/>	<input type="checkbox"/>	<input type="checkbox"/>	<input type="checkbox"/>
18. Special-status plants (APM BIO-2, MM Biology-1a, MM Biology-3, and MM Biology-1b)	<input checked="" type="checkbox"/>	<input checked="" type="checkbox"/>	<input checked="" type="checkbox"/>	<input checked="" type="checkbox"/>	<input type="checkbox"/>	<input type="checkbox"/>	<input type="checkbox"/>
19. Aquatic/hydrologic resources (APM HYDRO-1 and MM Geology-1)	<input checked="" type="checkbox"/>	<input checked="" type="checkbox"/>	<input checked="" type="checkbox"/>	<input checked="" type="checkbox"/>	<input type="checkbox"/>	<input type="checkbox"/>	<input type="checkbox"/>
20. SWPPP/reclamation (APM HYDRO-1, MM Geology-1, and MM Biology-11)	<input checked="" type="checkbox"/>	<input checked="" type="checkbox"/>	<input checked="" type="checkbox"/>	<input checked="" type="checkbox"/>	<input type="checkbox"/>	<input type="checkbox"/>	<input type="checkbox"/>
21. Cultural resources (APM CUL-2, MM Cultural Resources-1, MM Cultural Resources-2, and MM Cultural Resources-3)	<input checked="" type="checkbox"/>	<input checked="" type="checkbox"/>	<input checked="" type="checkbox"/>	<input checked="" type="checkbox"/>	<input type="checkbox"/>	<input type="checkbox"/>	<input type="checkbox"/>
22. Paleontological resources (APM CUL-5, APM CUL-6, and MM Paleontology 1)	<input checked="" type="checkbox"/>	<input checked="" type="checkbox"/>	<input checked="" type="checkbox"/>	<input checked="" type="checkbox"/>	<input type="checkbox"/>	<input type="checkbox"/>	<input type="checkbox"/>
23. Tribal resources (MM Cultural Resources-4)	<input checked="" type="checkbox"/>	<input checked="" type="checkbox"/>	<input checked="" type="checkbox"/>	<input checked="" type="checkbox"/>	<input type="checkbox"/>	<input type="checkbox"/>	<input type="checkbox"/>
24. Fire management (APM HAZ-3)	<input checked="" type="checkbox"/>	<input checked="" type="checkbox"/>	<input checked="" type="checkbox"/>	<input checked="" type="checkbox"/>	<input type="checkbox"/>	<input type="checkbox"/>	<input type="checkbox"/>
D. SDG&E Record of Weekly Incidents							
Compliance Level 1: Occurrences	0	1	1	0	0	0	
Compliance Level 2: Minor Problems	0	0	0	0	0	0	
Compliance Level 3: Compliance Issues	0	0	0	0	0	0	
Compliance Level 4: Noncompliances	0	0	0	0	0	0	
Total Compliance Level Incidents	0	1	1	0	0	0	0
Health and Safety Incidents	0	0	0	0	0	0	
Public Complaints	0	0	0	0	0	0	
Total Incidents	0	1	1	0	0	0	0



Salt Creek Substation Project
WEEKLY ENVIRONMENTAL COMPLIANCE REPORT
November 14 – November 19, 2016

INTRODUCTION

This report provides an overview of construction progress and applicant-proposed measure (APM) and mitigation measure (MM) implementation during construction of the San Diego Gas & Electric Company (SDG&E) Salt Creek Substation Project (Project) during the week ending on November 19, 2016. Work on the Project was conducted by SDG&E, Geo Pacific Services, Inc. (GeoPac), Suffolk, and their construction subcontractors.

CONSTRUCTION OVERVIEW

On June 21, 2016, the California Public Utilities Commission (CPUC) issued a Notice to Proceed for construction of the Project. Construction of the Salt Creek Substation kicked off on July 18, 2016. During this reporting period, construction activities occurred November 14, 2016 through November 19, 2016 and are listed in the following section by Project component. A Lead Environmental Inspector (LEI) was on-site November 14 – November 19.

CONSTRUCTION ACTIVITIES

Salt Creek Substation

Construction activities during this reporting period included mobilization, conducting earthwork, installation of additional BMPs, developing site surfaces, trenching and concrete pour for 12kV and 69kV conduit, placement of vaults in front of sub-station, application of water proofing on the masonry wall, water tie-in on Hunte Parkway for project fire hydrant, asphalt paving on Hunte Parkway, preparation of slopes around the bio-retention basin, and curb and gutter work on Road A. In addition the below grade contractor continues to build pads in the substation area.

WORKER ENVIRONMENTAL AWARENESS PROGRAM

Approximately 17 new project personnel attended the required environmental training as part of the Project Worker Environmental Awareness Program (WEAP). To date, approximately 302 Project personnel have received the required environmental awareness education.

ENVIRONMENTAL COMPLIANCE SUMMARY

The following subsections provide an assessment of environmental resources and a summary of the APMs, MMs, and permit conditions that were implemented during the week ending on November 19, 2016.

Air Quality

During earth moving activities a water truck was used to control dust. During this reporting period all pavement was kept clean. No winds occurred that were higher than 20 mph.

Biological Resources

During this monitoring period, construction occurred within the project limits of disturbance, adjacent to, but not within the special status plant locations. No special-status species were observed during the monitoring period.

Cultural and Paleontological Resources

Cultural and Native American monitors were not on-site during construction activities from November 14 through November 19, 2016. During this reporting period, excavation was limited to fill material, and native material previously graded to at least 10-feet below the surface, where the potential for impacts to cultural and archaeological resources was extremely low. Cultural and Native American monitors were on-call each day of construction, but were not called to the site. A paleontological monitor was on-site during construction activities from November 14 through November 19, 2016.

Hazardous Materials and Waste

All fueling was conducted in appropriate areas and all vehicles and equipment were checked for leaks. One hydraulic fluid spill was observed during this reporting period.

On November 15, 2016, a skip loader had a hydraulic hose break; the spill was reported to the LEI. The spill was approximately one to two quarts of hydraulic fluid that sprayed onto the soil. The spill was contained with drip pans and absorbent pads. After the skip loader was repaired and moved, the stained soil was immediately removed and placed in a 55-gallon metal barrel following project requirements.

Noise

Construction activities during this reporting period were confined to Monday through Saturday and occurred between 7:00 a.m. and 7:00 p.m. However, the start time on Saturday was 8:00 a.m.

Traffic and Transportation

The traffic control plan approved by the City of Chula Vista was implemented and general traffic measures were adhered to. The majority of project personnel are parking their personal vehicles within a designated personal vehicle parking area within the project limits and established parking area adjacent to the southeast corner of the project limits.

Storm Water Compliance

During this reporting period, the project SWPPP and BMPs were implemented in accordance with the SDG&E Water Quality Construction BMP Manual. Permanent slopes within the project site were sprayed with BFM during the week of October 10 through October 15, 2016.

Permanent slopes that were not sprayed and/or were under active construction in October were sprayed with BFM on Monday November 14, 2016. The Qualified SWPPP Practitioner inspected the site on November 16, 2016 for the Weekly SWPPP Inspection. No BMP deficiencies were observed during the inspection. Due to the predicted precipitation on Monday November 21, 2016, additional BMPs were installed around an exposed spoil pile situated adjacent to the trench for the fire hydrant trench, and all hard surfaces were swept of loose soil and debris.

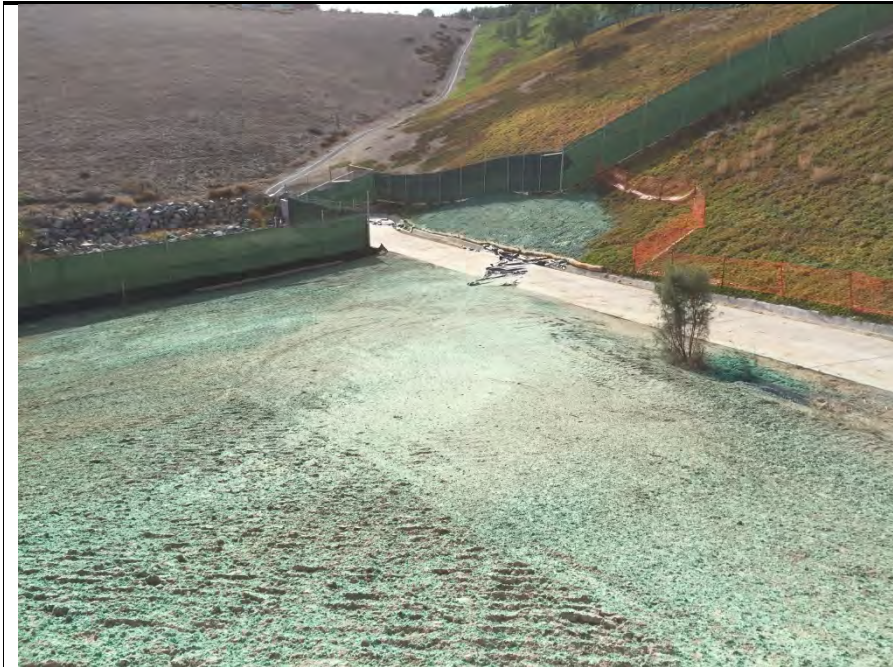
Non-Compliances

The observation of the hydraulic oil spill on November 15 was reported as a Level 1: Occurrence. The spill was properly contained, removed, disposed of and reported; all project requirements were followed adequately. The occurrence did not put any resources at risk (i.e., air quality, water quality, vegetation, or wildlife).

ATTACHMENT A: PHOTOGRAPHS



Salt Creek Substation Project
ENVIRONMENTAL COMPLIANCE STATUS REPORT
Attachment A: Photographs



Photograph 1:

Application of Bonded Fiber matrix (BFM) occurred during the week of November 14, 2016.



Photograph 2:

Additional BMPs were installed around soil spoil pile adjacent to fire hydrant pipeline trench on November 19, 2016.



Photograph 3:
Geo Pacific construction crew cleaning up hydraulic fluid spill that occurred on November 15, 2016.



Photograph 4:
Area where hydraulic fluid spill occurred after clean up on November 15, 2016.

ATTACHMENT B: DAILY LOGS

Salt Creek Daily Inspection

Monitor Date: 11/14/2016

Weather Observations

Start Temperature: 55°F Midday Temperature: 88°F End Temperature: 75°F
Weather Conditions: Sunny
Precipitation: None
Cloud Cover: 0

Construction Details

Construction Start Time: 7:00 AM Construction End Time: 5:00 PM

Construction Activities

- | | |
|---|---|
| <input checked="" type="checkbox"/> Mobilize materials equipment or prepared work areas | <input type="checkbox"/> Installed aboveground facilities |
| <input type="checkbox"/> Cleared or trimmed vegetation | <input type="checkbox"/> Installed landscaping |
| <input checked="" type="checkbox"/> Conduct earthwork | <input type="checkbox"/> Demobilized materials equipment or cleaned up work areas |
| <input checked="" type="checkbox"/> Developed site drainage facilities | |
| <input checked="" type="checkbox"/> Developed site surfaces | |
| <input checked="" type="checkbox"/> Installed underground facilities | |

Was a safety check-in conducted? Y Approximate Number of Construction Personnel On-site: 30

General Notes/Comments Excavation of trenches for 12 kV getaways, substation pad development, masonry wall water proofing, concrete pours on 12 kV conduit, work on water line tie in and BFM application.

General Issues

Monitor: Ron Walker

- | | |
|--|-----|
| A. Workplace limits verified and properly marked? | Yes |
| B. All activities within approved workspace limits? | Yes |
| C. Only approved access roads utilized for ingress and egress? | Yes |
| D. Access road signs in place? | Yes |
| E. Trash and debris contained and disposed of in proper manner? | Yes |
| F. All crew on site displaying hard-hat decals from WEAP training? | Yes |
| G. Speed limit observed by all project personnel? | Yes |
| H. Was construction noise limited to maximum allowed levels (mufflers being used, construction occurring only within allowed hours, vehicle idling minimized etc.) | Yes |
| I. Was existing vehicle and trail access maintained? | Yes |
| J. Did any health and safety incidents occur? | No |
| K. Were there any public complaints? | No |
| L. Was the project shut down for any reason today? | No |
| M. Were there any other incidents to report? | No |
-

Environmental Resources

Monitor: Ron Walker

Compliance Level: In Compliance

- | | |
|---|-----|
| A. Were all active work areas and access roads clearly marked with staking or flagging? | Yes |
| B. Did all vehicles and personnel stay in approved work areas? | Yes |
| C. Was fire suppression equipment within 50 feet of each active work area? | Yes |
| D. Were all construction activities completed between 7:00 a.m. and 7:00 p.m.? | Yes |

Salt Creek Daily Inspection

Monitor Date: 11/14/2016

Biological Resources

Monitor: Ron Walker

Compliance Level: In Compliance

- A. Were all work activities conducted outside of any established nesting bird buffer, active nests and/or burrows? Yes
- B. Were all equipment/vehicles that arrived on site clean and free of vegetative debris/soil? Yes
- C. Were any special-status species observed? No
- D. Did work activities occur in or adjacent to known locations of Special status plants? Yes
Known locations of special status plants exist outside and adjacent to the project limits. No work was conducted outside of the project limits.
- E. Did any construction activity occur within an ESA? No
- F. Was the work area surveyed for sensitive species immediately prior to ground-disturbing or vegetation removal activities? Yes
- G. Are all open excavations/trenches inspected for entrapped wildlife at least twice daily? Yes
- H. Are all large/steep excavations/trenches covered and/or fenced nightly? Yes
- I. Are excavations covered or equipped with earthen wildlife escape ramps by the end of the day? Yes
-

Cultural Resources

No Cultural Data Collected

Paleontological Resources

Monitor: Jen DiCenzo

Compliance Level: In Compliance

- A. Were ground disturbing activities conducted within a paleontological sensitive area? Yes
No new discoveries
- B. Were any paleontological materials identified? No
- C. Were any paleontological materials damaged or destroyed? No

Salt Creek Daily Inspection

Monitor Date: 11/14/2016

Dust Control

Monitor: Ron Walker

Compliance Level: In Compliance

- | | |
|---|-----|
| A. Are materials carried off site covered or watered prior to leaving site? | N/A |
| B. Are exposed stockpiles of dirt covered or watered to control fugitive dust | Yes |
| C. Is all soil material tracked onto paved public roads swept daily? | Yes |
| D. Are all work areas and access roads watered daily if there is persistent fugitive dust is visible beyond the work area boundaries? | Yes |
| E. Are all loads covered or have a minimum of two feet of freeboard? | N/A |
| F. If sustained winds of 20 mph or greater are experienced, were soil disturbing activities terminated? | N/A |
| G. Are rock aprons or rattle/shaker plates installed at the intersections of dirt access routes and paved public roadways? | Yes |
-

Erosion and Sediment

Monitor: Ron Walker

Compliance Level: In Compliance

- | | |
|--|-----|
| A. Are there sufficient quantities of erosion control materials stockpiled at the construction site? | Yes |
| B. Are all locations of temporary stockpiles in approved areas and appropriately protected? | Yes |
| C. Were any rolled erosion control products used? | Yes |
| D. Were rolled erosion products comprised of entirely natural fiber biodegradable materials? | Yes |
-

Hazardous Substances

Monitor: Ron Walker

Compliance Level: In Compliance

- | | |
|--|-----|
| A. Is fueling conducted in appropriate areas with appropriate containment and spill materials? | Yes |
| B. Are vehicles and equipment checked for leaks? | Yes |
| C. Were any leaks observed? | No |
| D. Are spills cleaned up and disposed of properly? | Yes |
| E. Are clean-up materials available on site in case of a spill? | Yes |
| F. Was discolored or odiferous soil or groundwater encountered during excavation activities? | No |
-

Waste

Monitor: Ron Walker

Compliance Level: In Compliance

- | | |
|--|-----|
| A. Is project-generated litter removed from the construction site daily? | Yes |
| B. Are waste management receptacle levels appropriately maintained? | Yes |

Salt Creek Daily Inspection

Monitor Date: 11/15/2016

Weather Observations

Start Temperature: 52°F Midday Temperature: 81°F End Temperature: 71°F
Weather Conditions: Sunny
Precipitation: None
Cloud Cover: 10

Construction Details

Construction Start Time: 7:00 AM Construction End Time: 5:00 PM

Construction Activities

- | | |
|---|---|
| <input checked="" type="checkbox"/> Mobilize materials equipment or prepared work areas | <input type="checkbox"/> Installed aboveground facilities |
| <input type="checkbox"/> Cleared or trimmed vegetation | <input type="checkbox"/> Installed landscaping |
| <input checked="" type="checkbox"/> Conduct earthwork | <input type="checkbox"/> Demobilized materials equipment or cleaned up work areas |
| <input checked="" type="checkbox"/> Developed site drainage facilities | |
| <input checked="" type="checkbox"/> Developed site surfaces | |
| <input checked="" type="checkbox"/> Installed underground facilities | |

Was a safety check-in conducted? Y Approximate Number of Construction Personnel On-site: 35

General Notes/Comments Water tie in for fire hydrant, slurry pour for 12kV trenches, placement of vault boxes, substation pad work.

General Issues

Monitor: Ron Walker

- | | |
|--|-----|
| A. Workplace limits verified and properly marked? | Yes |
| B. All activities within approved workspace limits? | Yes |
| C. Only approved access roads utilized for ingress and egress? | Yes |
| D. Access road signs in place? | Yes |
| E. Trash and debris contained and disposed of in proper manner? | Yes |
| F. All crew on site displaying hard-hat decals from WEAP training? | Yes |
| G. Speed limit observed by all project personnel? | Yes |
| H. Was construction noise limited to maximum allowed levels (mufflers being used, construction occurring only within allowed hours, vehicle idling minimized etc.) | Yes |
| I. Was existing vehicle and trail access maintained? | Yes |
| J. Did any health and safety incidents occur? | No |
| K. Were there any public complaints? | No |
| L. Was the project shut down for any reason today? | No |
| M. Were there any other incidents to report? | No |
-

Environmental Resources

Monitor: Ron Walker

Compliance Level: In Compliance

- | | |
|---|-----|
| A. Were all active work areas and access roads clearly marked with staking or flagging? | Yes |
| B. Did all vehicles and personnel stay in approved work areas? | Yes |
| C. Was fire suppression equipment within 50 feet of each active work area? | Yes |
| D. Were all construction activities completed between 7:00 a.m. and 7:00 p.m.? | Yes |

Salt Creek Daily Inspection

Monitor Date: 11/15/2016

Biological Resources

Monitor: Ron Walker

Compliance Level: In Compliance

- A. Were all work activities conducted outside of any established nesting bird buffer, active nests and/or burrows? Yes
- B. Were all equipment/vehicles that arrived on site clean and free of vegetative debris/soil? Yes
- C. Were any special-status species observed? No
- D. Did work activities occur in or adjacent to known locations of Special status plants? Yes
Known locations of special status plants exist outside and adjacent to the project limits. No work was conducted outside of the project limits.
- E. Did any construction activity occur within an ESA? No
- F. Was the work area surveyed for sensitive species immediately prior to ground-disturbing or vegetation removal activities? Yes
- G. Are all open excavations/trenches inspected for entrapped wildlife at least twice daily? Yes
- H. Are all large/steep excavations/trenches covered and/or fenced nightly? Yes
- I. Are excavations covered or equipped with earthen wildlife escape ramps by the end of the day? Yes
-

Cultural Resources

No Cultural Data Collected

Paleontological Resources

Monitor: Jen DiCenzo

Compliance Level: In Compliance

- A. Were ground disturbing activities conducted within a paleontological sensitive area? Yes
No new discoveries
- B. Were any paleontological materials identified? No
- C. Were any paleontological materials damaged or destroyed? No

Salt Creek Daily Inspection

Monitor Date: 11/15/2016

Dust Control

Monitor: Ron Walker

Compliance Level: In Compliance

- | | |
|---|-----|
| A. Are materials carried off site covered or watered prior to leaving site? | N/A |
| B. Are exposed stockpiles of dirt covered or watered to control fugitive dust | Yes |
| C. Is all soil material tracked onto paved public roads swept daily? | Yes |
| D. Are all work areas and access roads watered daily if there is persistent fugitive dust is visible beyond the work area boundaries? | Yes |
| E. Are all loads covered or have a minimum of two feet of freeboard? | N/A |
| F. If sustained winds of 20 mph or greater are experienced, were soil disturbing activities terminated? | N/A |
| G. Are rock aprons or rattle/shaker plates installed at the intersections of dirt access routes and paved public roadways? | Yes |
-

Erosion and Sediment

Monitor: Ron Walker

Compliance Level: In Compliance

- | | |
|--|-----|
| A. Are there sufficient quantities of erosion control materials stockpiled at the construction site? | Yes |
| B. Are all locations of temporary stockpiles in approved areas and appropriately protected? | Yes |
| C. Were any rolled erosion control products used? | Yes |
| D. Were rolled erosion products comprised of entirely natural fiber biodegradable materials? | Yes |
-

Hazardous Substances

Monitor: Ron Walker

Compliance Level: In Compliance

- | | |
|---|-----|
| A. Is fueling conducted in appropriate areas with appropriate containment and spill materials? | Yes |
| B. Are vehicles and equipment checked for leaks? | Yes |
| C. Were any leaks observed?
Skip loader broke hydraulic hose and approximately one quart of fluid sprayed onto the ground. The stained soil was cleaned up and disposed of per project requirements. | Yes |
| D. Are spills cleaned up and disposed of properly? | Yes |
| E. Are clean-up materials available on site in case of a spill? | Yes |
| F. Was discolored or odiferous soil or groundwater encountered during excavation activities? | No |
-

Waste

Monitor: Ron Walker

Compliance Level: In Compliance

- | | |
|--|-----|
| A. Is project-generated litter removed from the construction site daily? | Yes |
| B. Are waste management receptacle levels appropriately maintained? | Yes |

Salt Creek Daily Inspection

Monitor Date: 11/16/2016

Weather Observations

Start Temperature: 51°F Midday Temperature: 71°F End Temperature: 65°F
Weather Conditions: Cloudy
Precipitation: None
Cloud Cover: 80

Construction Details

Construction Start Time: 7:00 AM Construction End Time: 5:00 PM

Construction Activities

- | | |
|---|---|
| <input checked="" type="checkbox"/> Mobilize materials equipment or prepared work areas | <input type="checkbox"/> Installed aboveground facilities |
| <input type="checkbox"/> Cleared or trimmed vegetation | <input type="checkbox"/> Installed landscaping |
| <input checked="" type="checkbox"/> Conduct earthwork | <input type="checkbox"/> Demobilized materials equipment or cleaned up work areas |
| <input checked="" type="checkbox"/> Developed site drainage facilities | |
| <input checked="" type="checkbox"/> Developed site surfaces | |
| <input checked="" type="checkbox"/> Installed underground facilities | |

Was a safety check-in conducted? Y Approximate Number of Construction Personnel On-site: 35

General Notes/Comments Substation pad work, curb and gutter work on road A, slurry pour for vaults, trenching for 12 kV getaway, backfill around bio-retention basin, application of water proofing on masonry wall.

General Issues

Monitor: Ron Walker

- | | |
|--|-----|
| A. Workplace limits verified and properly marked? | Yes |
| B. All activities within approved workspace limits? | Yes |
| C. Only approved access roads utilized for ingress and egress? | Yes |
| D. Access road signs in place? | Yes |
| E. Trash and debris contained and disposed of in proper manner? | Yes |
| F. All crew on site displaying hard-hat decals from WEAP training? | Yes |
| G. Speed limit observed by all project personnel? | Yes |
| H. Was construction noise limited to maximum allowed levels (mufflers being used, construction occurring only within allowed hours, vehicle idling minimized etc.) | Yes |
| I. Was existing vehicle and trail access maintained? | Yes |
| J. Did any health and safety incidents occur? | No |
| K. Were there any public complaints? | No |
| L. Was the project shut down for any reason today? | No |
| M. Were there any other incidents to report? | No |
-

Environmental Resources

Monitor: Ron Walker

Compliance Level: In Compliance

- | | |
|---|-----|
| A. Were all active work areas and access roads clearly marked with staking or flagging? | Yes |
| B. Did all vehicles and personnel stay in approved work areas? | Yes |
| C. Was fire suppression equipment within 50 feet of each active work area? | Yes |
| D. Were all construction activities completed between 7:00 a.m. and 7:00 p.m.? | Yes |

Salt Creek Daily Inspection

Monitor Date: 11/16/2016

Biological Resources

Monitor: Ron Walker

Compliance Level: In Compliance

- A. Were all work activities conducted outside of any established nesting bird buffer, active nests and/or burrows? Yes
- B. Were all equipment/vehicles that arrived on site clean and free of vegetative debris/soil? Yes
- C. Were any special-status species observed? No
- D. Did work activities occur in or adjacent to known locations of Special status plants? Yes
Known locations of special status plants exist outside and adjacent to the project limits. No work was conducted outside of the project limits.
- E. Did any construction activity occur within an ESA? No
- F. Was the work area surveyed for sensitive species immediately prior to ground-disturbing or vegetation removal activities? Yes
- G. Are all open excavations/trenches inspected for entrapped wildlife at least twice daily? Yes
- H. Are all large/steep excavations/trenches covered and/or fenced nightly? Yes
- I. Are excavations covered or equipped with earthen wildlife escape ramps by the end of the day? Yes

J. General Notes/Comments

Cultural Resources

No Cultural Data Collected

Paleontological Resources

Monitor: Jen DiCenzo

Compliance Level: In Compliance

- A. Were ground disturbing activities conducted within a paleontological sensitive area? Yes
No new discoveries
- B. Were any paleontological materials identified? No
- C. Were any paleontological materials damaged or destroyed? No

Salt Creek Daily Inspection

Monitor Date: 11/16/2016

Dust Control

Monitor: Ron Walker

Compliance Level: In Compliance

- | | |
|---|-----|
| A. Are materials carried off site covered or watered prior to leaving site? | N/A |
| B. Are exposed stockpiles of dirt covered or watered to control fugitive dust | Yes |
| C. Is all soil material tracked onto paved public roads swept daily? | Yes |
| D. Are all work areas and access roads watered daily if there is persistent fugitive dust is visible beyond the work area boundaries? | Yes |
| E. Are all loads covered or have a minimum of two feet of freeboard? | N/A |
| F. If sustained winds of 20 mph or greater are experienced, were soil disturbing activities terminated? | N/A |
| G. Are rock aprons or rattle/shaker plates installed at the intersections of dirt access routes and paved public roadways? | Yes |
-

Erosion and Sediment

Monitor: Ron Walker

Compliance Level: In Compliance

- | | |
|--|-----|
| A. Are there sufficient quantities of erosion control materials stockpiled at the construction site? | Yes |
| B. Are all locations of temporary stockpiles in approved areas and appropriately protected? | Yes |
| C. Were any rolled erosion control products used? | Yes |
| D. Were rolled erosion products comprised of entirely natural fiber biodegradable materials? | Yes |
-

Hazardous Substances

Monitor: Ron Walker

Compliance Level: In Compliance

- | | |
|--|-----|
| A. Is fueling conducted in appropriate areas with appropriate containment and spill materials? | Yes |
| B. Are vehicles and equipment checked for leaks? | Yes |
| C. Were any leaks observed? | No |
| D. Are spills cleaned up and disposed of properly? | Yes |
| E. Are clean-up materials available on site in case of a spill? | Yes |
| F. Was discolored or odiferous soil or groundwater encountered during excavation activities? | No |
-

Waste

Monitor: Ron Walker

Compliance Level: In Compliance

- | | |
|--|-----|
| A. Is project-generated litter removed from the construction site daily? | Yes |
| B. Are waste management receptacle levels appropriately maintained? | Yes |

Salt Creek Daily Inspection

Monitor Date: 11/17/2016

Weather Observations

Start Temperature: 55°F Midday Temperature: 71°F End Temperature: 65°F
Weather Conditions: Sunny
Precipitation: None
Cloud Cover: 0

Construction Details

Construction Start Time: 7:00 AM Construction End Time: 5:00 PM

Construction Activities

- | | |
|---|---|
| <input checked="" type="checkbox"/> Mobilize materials equipment or prepared work areas | <input type="checkbox"/> Installed aboveground facilities |
| <input type="checkbox"/> Cleared or trimmed vegetation | <input type="checkbox"/> Installed landscaping |
| <input checked="" type="checkbox"/> Conduct earthwork | <input type="checkbox"/> Demobilized materials equipment or cleaned up work areas |
| <input checked="" type="checkbox"/> Developed site drainage facilities | |
| <input checked="" type="checkbox"/> Developed site surfaces | |
| <input checked="" type="checkbox"/> Installed underground facilities | |

Was a safety check-in conducted? Y Approximate Number of Construction Personnel On-site: 34

General Notes/Comments 12kV getaway trenching and slurry pour, Road A curb and gutter form installation, 69kV trenching from vaults to substation, substation equipment pad concrete pour, oil containment basin perimeter form installation, grading around bio-retention basin, and substation screen wall water-proofing.

General Issues

Monitor: Ron Walker

- | | |
|--|-----|
| A. Workplace limits verified and properly marked? | Yes |
| B. All activities within approved workspace limits? | Yes |
| C. Only approved access roads utilized for ingress and egress? | Yes |
| D. Access road signs in place? | Yes |
| E. Trash and debris contained and disposed of in proper manner? | Yes |
| F. All crew on site displaying hard-hat decals from WEAP training? | Yes |
| G. Speed limit observed by all project personnel? | Yes |
| H. Was construction noise limited to maximum allowed levels (mufflers being used, construction occurring only within allowed hours, vehicle idling minimized etc.) | Yes |
| I. Was existing vehicle and trail access maintained? | Yes |
| J. Did any health and safety incidents occur? | No |
| K. Were there any public complaints? | No |
| L. Was the project shut down for any reason today? | No |
| M. Were there any other incidents to report? | No |
-

Environmental Resources

Monitor: Ron Walker

Compliance Level: In Compliance

- | | |
|---|-----|
| A. Were all active work areas and access roads clearly marked with staking or flagging? | Yes |
| B. Did all vehicles and personnel stay in approved work areas? | Yes |
| C. Was fire suppression equipment within 50 feet of each active work area? | Yes |
| D. Were all construction activities completed between 7:00 a.m. and 7:00 p.m.? | Yes |

Salt Creek Daily Inspection

Monitor Date: 11/17/2016

Biological Resources

Monitor: Ron Walker

Compliance Level: In Compliance

- A. Were all work activities conducted outside of any established nesting bird buffer, active nests and/or burrows? Yes
- B. Were all equipment/vehicles that arrived on site clean and free of vegetative debris/soil? Yes
- C. Were any special-status species observed? No
- D. Did work activities occur in or adjacent to known locations of Special status plants? Yes
Known locations of special status plants exist outside and adjacent to the project limits. No work was conducted outside of the project limits.
- E. Did any construction activity occur within an ESA? No
- F. Was the work area surveyed for sensitive species immediately prior to ground-disturbing or vegetation removal activities? Yes
- G. Are all open excavations/trenches inspected for entrapped wildlife at least twice daily? Yes
- H. Are all large/steep excavations/trenches covered and/or fenced nightly? Yes
- I. Are excavations covered or equipped with earthen wildlife escape ramps by the end of the day? Yes
-

Cultural Resources

No Cultural Data Collected

Paleontological Resources

Monitor: Jen DiCenzo

Compliance Level: In Compliance

- A. Were ground disturbing activities conducted within a paleontological sensitive area? Yes
No new discoveries
- B. Were any paleontological materials identified? No
- C. Were any paleontological materials damaged or destroyed? No

Salt Creek Daily Inspection

Monitor Date: 11/17/2016

Dust Control

Monitor: Ron Walker

Compliance Level: In Compliance

- | | |
|---|-----|
| A. Are materials carried off site covered or watered prior to leaving site? | N/A |
| B. Are exposed stockpiles of dirt covered or watered to control fugitive dust | Yes |
| C. Is all soil material tracked onto paved public roads swept daily? | Yes |
| D. Are all work areas and access roads watered daily if there is persistent fugitive dust is visible beyond the work area boundaries? | Yes |
| E. Are all loads covered or have a minimum of two feet of freeboard? | N/A |
| F. If sustained winds of 20 mph or greater are experienced, were soil disturbing activities terminated? | N/A |
| G. Are rock aprons or rattle/shaker plates installed at the intersections of dirt access routes and paved public roadways? | Yes |
-

Erosion and Sediment

Monitor: Ron Walker

Compliance Level: In Compliance

- | | |
|--|-----|
| A. Are there sufficient quantities of erosion control materials stockpiled at the construction site? | Yes |
| B. Are all locations of temporary stockpiles in approved areas and appropriately protected? | Yes |
| C. Were any rolled erosion control products used? | Yes |
| D. Were rolled erosion products comprised of entirely natural fiber biodegradable materials? | Yes |
-

Hazardous Substances

Monitor: Ron Walker

Compliance Level: In Compliance

- | | |
|--|-----|
| A. Is fueling conducted in appropriate areas with appropriate containment and spill materials? | Yes |
| B. Are vehicles and equipment checked for leaks? | Yes |
| C. Were any leaks observed? | No |
| D. Are spills cleaned up and disposed of properly? | Yes |
| E. Are clean-up materials available on site in case of a spill? | Yes |
| F. Was discolored or odiferous soil or groundwater encountered during excavation activities? | No |
-

Waste

Monitor: Ron Walker

Compliance Level: In Compliance

- | | |
|--|-----|
| A. Is project-generated litter removed from the construction site daily? | Yes |
| B. Are waste management receptacle levels appropriately maintained? | Yes |

Salt Creek Daily Inspection

Monitor Date: 11/18/2016

Weather Observations

Start Temperature: 65°F Midday Temperature: 81°F End Temperature: 66°F
Weather Conditions: Sunny
Precipitation: None
Cloud Cover: 0

Construction Details

Construction Start Time: 7:00 AM Construction End Time: 5:00 PM

Construction Activities

- | | |
|---|---|
| <input checked="" type="checkbox"/> Mobilize materials equipment or prepared work areas | <input type="checkbox"/> Installed aboveground facilities |
| <input type="checkbox"/> Cleared or trimmed vegetation | <input type="checkbox"/> Installed landscaping |
| <input checked="" type="checkbox"/> Conduct earthwork | <input type="checkbox"/> Demobilized materials equipment or cleaned up work areas |
| <input checked="" type="checkbox"/> Developed site drainage facilities | |
| <input checked="" type="checkbox"/> Developed site surfaces | |
| <input type="checkbox"/> Installed underground facilities | |

Was a safety check-in conducted? Y Approximate Number of Construction Personnel On-site: 35

General Notes/Comments 12kV getaway trenching, Road A curb and gutter concrete pour, 69kV trenching from vaults to substation, substation equipment pads form installation, oil containment basin perimeter form installation, grading around bio-retention basin, repaving over the wastewater and water-main trenches on Hunte Parkway.

General Issues

Monitor: Ron Walker

- | | |
|--|-----|
| A. Workplace limits verified and properly marked? | Yes |
| B. All activities within approved workspace limits? | Yes |
| C. Only approved access roads utilized for ingress and egress? | Yes |
| D. Access road signs in place? | Yes |
| E. Trash and debris contained and disposed of in proper manner? | Yes |
| F. All crew on site displaying hard-hat decals from WEAP training? | Yes |
| G. Speed limit observed by all project personnel? | Yes |
| H. Was construction noise limited to maximum allowed levels (mufflers being used, construction occurring only within allowed hours, vehicle idling minimized etc.) | Yes |
| I. Was existing vehicle and trail access maintained? | Yes |
| J. Did any health and safety incidents occur? | No |
| K. Were there any public complaints? | No |
| L. Was the project shut down for any reason today? | No |
| M. Were there any other incidents to report? | No |
-

Environmental Resources

Monitor: Ron Walker

Compliance Level: In Compliance

- | | |
|---|------------|
| A. Were all active work areas and access roads clearly marked with staking or flagging? | Yes |
| B. Did all vehicles and personnel stay in approved work areas? | Yes |
| C. Was fire suppression equipment within 50 feet of each active work area? | Yes |
| D. Were all construction activities completed between 7:00 a.m. and 7:00 p.m.? | Yes |

Salt Creek Daily Inspection

Monitor Date: 11/18/2016

Biological Resources

Monitor: Ron Walker

Compliance Level: In Compliance

- A. Were all work activities conducted outside of any established nesting bird buffer, active nests and/or burrows? Yes
- B. Were all equipment/vehicles that arrived on site clean and free of vegetative debris/soil? Yes
- C. Were any special-status species observed? No
- D. Did work activities occur in or adjacent to known locations of Special status plants? Yes
Known locations of special status plants exist outside and adjacent to the project limits. No work was conducted outside of the project limits.
- E. Did any construction activity occur within an ESA? No
- F. Was the work area surveyed for sensitive species immediately prior to ground-disturbing or vegetation removal activities? Yes
- G. Are all open excavations/trenches inspected for entrapped wildlife at least twice daily? Yes
- H. Are all large/steep excavations/trenches covered and/or fenced nightly? Yes
- I. Are excavations covered or equipped with earthen wildlife escape ramps by the end of the day? Yes

J. General Notes/Comments

Cultural Resources

No Cultural Data Collected

Paleontological Resources

Monitor: Jen DiCenzo

Compliance Level: In Compliance

- A. Were ground disturbing activities conducted within a paleontological sensitive area? Yes
No new discoveries
- B. Were any paleontological materials identified? No
- C. Were any paleontological materials damaged or destroyed? No

D. General Notes/Comments

Salt Creek Daily Inspection

Monitor Date: 11/18/2016

Dust Control

Monitor: Ron Walker

Compliance Level: In Compliance

- | | |
|---|-----|
| A. Are materials carried off site covered or watered prior to leaving site? | N/A |
| B. Are exposed stockpiles of dirt covered or watered to control fugitive dust | Yes |
| C. Is all soil material tracked onto paved public roads swept daily? | Yes |
| D. Are all work areas and access roads watered daily if there is persistent fugitive dust is visible beyond the work area boundaries? | Yes |
| E. Are all loads covered or have a minimum of two feet of freeboard? | N/A |
| F. If sustained winds of 20 mph or greater are experienced, were soil disturbing activities terminated? | N/A |
| G. Are rock aprons or rattle/shaker plates installed at the intersections of dirt access routes and paved public roadways? | Yes |
-

Erosion and Sediment

Monitor: Ron Walker

Compliance Level: In Compliance

- | | |
|--|-----|
| A. Are there sufficient quantities of erosion control materials stockpiled at the construction site? | Yes |
| B. Are all locations of temporary stockpiles in approved areas and appropriately protected? | Yes |
| C. Were any rolled erosion control products used? | Yes |
| D. Were rolled erosion products comprised of entirely natural fiber biodegradable materials? | Yes |
-

Hazardous Substances

Monitor: Ron Walker

Compliance Level: In Compliance

- | | |
|--|-----|
| A. Is fueling conducted in appropriate areas with appropriate containment and spill materials? | Yes |
| B. Are vehicles and equipment checked for leaks? | Yes |
| C. Were any leaks observed? | No |
| D. Are spills cleaned up and disposed of properly? | Yes |
| E. Are clean-up materials available on site in case of a spill? | Yes |
| F. Was discolored or odiferous soil or groundwater encountered during excavation activities? | No |
-

Waste

Monitor: Ron Walker

Compliance Level: In Compliance

- | | |
|--|-----|
| A. Is project-generated litter removed from the construction site daily? | Yes |
| B. Are waste management receptacle levels appropriately maintained? | Yes |

Salt Creek Daily Inspection

Monitor Date: 11/19/2016

Weather Observations

Start Temperature: 54°F Midday Temperature: 72°F End Temperature: 71°F
Weather Conditions: Cloudy
Precipitation: None
Cloud Cover: 100

Construction Details

Construction Start Time: 8:00 AM Construction End Time: 3:30 PM

Construction Activities

- | | |
|---|---|
| <input checked="" type="checkbox"/> Mobilize materials equipment or prepared work areas | <input type="checkbox"/> Installed aboveground facilities |
| <input type="checkbox"/> Cleared or trimmed vegetation | <input type="checkbox"/> Installed landscaping |
| <input checked="" type="checkbox"/> Conduct earthwork | <input type="checkbox"/> Demobilized materials equipment or cleaned up work areas |
| <input type="checkbox"/> Developed site drainage facilities | |
| <input type="checkbox"/> Developed site surfaces | |
| <input checked="" type="checkbox"/> Installed underground facilities | |

Was a safety check-in conducted? Y Approximate Number of Construction Personnel On-site: 12

General Notes/Comments Excavation of trench for 12 kV getaway, concrete pour of installed conduit, installed additional BMPs around spoil pile next to water hydrant pipeline trench.

General Issues

Monitor: Ron Walker

- | | |
|--|-----|
| A. Workplace limits verified and properly marked? | Yes |
| B. All activities within approved workspace limits? | Yes |
| C. Only approved access roads utilized for ingress and egress? | Yes |
| D. Access road signs in place? | Yes |
| E. Trash and debris contained and disposed of in proper manner? | Yes |
| F. All crew on site displaying hard-hat decals from WEAP training? | Yes |
| G. Speed limit observed by all project personnel? | Yes |
| H. Was construction noise limited to maximum allowed levels (mufflers being used, construction occurring only within allowed hours, vehicle idling minimized etc.) | Yes |
| I. Was existing vehicle and trail access maintained? | Yes |
| J. Did any health and safety incidents occur? | No |
| K. Were there any public complaints? | No |
| L. Was the project shut down for any reason today? | No |
| M. Were there any other incidents to report? | No |
-

Environmental Resources

Monitor: Ron Walker

Compliance Level: In Compliance

- | | |
|---|-----|
| A. Were all active work areas and access roads clearly marked with staking or flagging? | Yes |
| B. Did all vehicles and personnel stay in approved work areas? | Yes |
| C. Was fire suppression equipment within 50 feet of each active work area? | Yes |
| D. Were all construction activities completed between 7:00 a.m. and 7:00 p.m.? | Yes |

Salt Creek Daily Inspection

Monitor Date: 11/19/2016

Biological Resources

Monitor: Ron Walker

Compliance Level: In Compliance

- A. Were all work activities conducted outside of any established nesting bird buffer, active nests and/or burrows? Yes
- B. Were all equipment/vehicles that arrived on site clean and free of vegetative debris/soil? Yes
- C. Were any special-status species observed? No
- D. Did work activities occur in or adjacent to known locations of Special status plants? Yes
Known locations of special status plants exist outside and adjacent to the project limits. No work was conducted outside of the project limits.
- E. Did any construction activity occur within an ESA? No
- F. Was the work area surveyed for sensitive species immediately prior to ground-disturbing or vegetation removal activities? Yes
- G. Are all open excavations/trenches inspected for entrapped wildlife at least twice daily? Yes
- H. Are all large/steep excavations/trenches covered and/or fenced nightly? Yes
- I. Are excavations covered or equipped with earthen wildlife escape ramps by the end of the day? Yes
-

Cultural Resources

No Cultural Data Collected

Paleontological Resources

Monitor: Jen DiCenzo

Compliance Level: In Compliance

- A. Were ground disturbing activities conducted within a paleontological sensitive area? Yes
No new discoveries
- B. Were any paleontological materials identified? No
- C. Were any paleontological materials damaged or destroyed? No

Salt Creek Daily Inspection

Monitor Date: 11/19/2016

Dust Control

Monitor: Ron Walker

Compliance Level: In Compliance

- | | |
|---|-----|
| A. Are materials carried off site covered or watered prior to leaving site? | N/A |
| B. Are exposed stockpiles of dirt covered or watered to control fugitive dust | Yes |
| C. Is all soil material tracked onto paved public roads swept daily? | Yes |
| D. Are all work areas and access roads watered daily if there is persistent fugitive dust is visible beyond the work area boundaries? | Yes |
| E. Are all loads covered or have a minimum of two feet of freeboard? | N/A |
| F. If sustained winds of 20 mph or greater are experienced, were soil disturbing activities terminated? | N/A |
| G. Are rock aprons or rattle/shaker plates installed at the intersections of dirt access routes and paved public roadways? | Yes |
-

Erosion and Sediment

Monitor: Ron Walker

Compliance Level: In Compliance

- | | |
|--|-----|
| A. Are there sufficient quantities of erosion control materials stockpiled at the construction site? | Yes |
| B. Are all locations of temporary stockpiles in approved areas and appropriately protected? | Yes |
| C. Were any rolled erosion control products used? | Yes |
| D. Were rolled erosion products comprised of entirely natural fiber biodegradable materials? | Yes |
-

Hazardous Substances

Monitor: Ron Walker

Compliance Level: In Compliance

- | | |
|--|-----|
| A. Is fueling conducted in appropriate areas with appropriate containment and spill materials? | Yes |
| B. Are vehicles and equipment checked for leaks? | Yes |
| C. Were any leaks observed? | No |
| D. Are spills cleaned up and disposed of properly? | Yes |
| E. Are clean-up materials available on site in case of a spill? | Yes |
| F. Was discolored or odiferous soil or groundwater encountered during excavation activities? | No |
-

Waste

Monitor: Ron Walker

Compliance Level: In Compliance

- | | |
|--|-----|
| A. Is project-generated litter removed from the construction site daily? | Yes |
| B. Are waste management receptacle levels appropriately maintained? | Yes |

ATTACHMENT C: MMCRP CHECKLIST

SALT CREEK SUBSTATION PROJECT

Weekly MMRP Checklist

Completed by: Ron Walker
 Organization: AECOM
 Position: LEI

Day of the Week	Mon	Tue	Wed	Thu	Fri	Sat	Sun
Date (mm/dd/yy)	11/14/14	11/15/14	11/16/14	11/17/14	11/18/14	11/19/14	
A. Daily Work Hours and Workforce							
Start Time (hh:mm am/pm)	7:00 am	7:00 am	7:00 am	7:00 am	7:00 am	8:00 am	
Stop Time	5:00 pm	5:00 pm	5:00 pm	5:00 pm	5:00 pm	3:30 pm	
Construction Personnel Onsite	30	35	35	34	35	12	
Compliance Personnel Onsite	2	2	2	2	3	2	
Total Personnel Onsite	32	37	37	36	38	14	0
B. Daily Construction Activities – Check only if applicable							
1. Mobilized materials/equipment or prepared work areas	<input checked="" type="checkbox"/>	<input checked="" type="checkbox"/>	<input checked="" type="checkbox"/>	<input checked="" type="checkbox"/>	<input checked="" type="checkbox"/>	<input checked="" type="checkbox"/>	<input type="checkbox"/>
2. Cleared or trimmed vegetation	<input type="checkbox"/>	<input type="checkbox"/>	<input type="checkbox"/>	<input type="checkbox"/>	<input type="checkbox"/>	<input type="checkbox"/>	<input type="checkbox"/>
3. Conducted earthwork (grading, trenching, or other ground disturbance)	<input checked="" type="checkbox"/>	<input checked="" type="checkbox"/>	<input checked="" type="checkbox"/>	<input checked="" type="checkbox"/>	<input checked="" type="checkbox"/>	<input checked="" type="checkbox"/>	<input type="checkbox"/>
4. Developed site surfaces (substation pad or access roads)	<input checked="" type="checkbox"/>	<input checked="" type="checkbox"/>	<input checked="" type="checkbox"/>	<input checked="" type="checkbox"/>	<input checked="" type="checkbox"/>	<input checked="" type="checkbox"/>	<input type="checkbox"/>
5. Developed site drainage facilities	<input checked="" type="checkbox"/>	<input checked="" type="checkbox"/>	<input checked="" type="checkbox"/>	<input checked="" type="checkbox"/>	<input checked="" type="checkbox"/>	<input checked="" type="checkbox"/>	<input type="checkbox"/>
6. Installed underground facilities	<input checked="" type="checkbox"/>	<input checked="" type="checkbox"/>	<input checked="" type="checkbox"/>	<input checked="" type="checkbox"/>	<input checked="" type="checkbox"/>	<input checked="" type="checkbox"/>	<input type="checkbox"/>
7. Installed aboveground facilities	<input type="checkbox"/>	<input type="checkbox"/>	<input type="checkbox"/>	<input type="checkbox"/>	<input type="checkbox"/>	<input type="checkbox"/>	<input type="checkbox"/>
8. Installed landscaping	<input type="checkbox"/>	<input type="checkbox"/>	<input type="checkbox"/>	<input type="checkbox"/>	<input type="checkbox"/>	<input type="checkbox"/>	<input type="checkbox"/>
9. Demobilized materials/equipment or cleaned up work areas	<input type="checkbox"/>	<input type="checkbox"/>	<input type="checkbox"/>	<input type="checkbox"/>	<input type="checkbox"/>	<input type="checkbox"/>	<input type="checkbox"/>
10. Other	<input type="checkbox"/>	<input type="checkbox"/>	<input type="checkbox"/>	<input type="checkbox"/>	<input type="checkbox"/>	<input type="checkbox"/>	<input type="checkbox"/>
C. Daily Compliance Activities – Check only if applicable and implemented adequately without incident							
Avoidance and Minimization, and General Monitoring							
1. Limited activities to approved work areas and access roads (APM BIO-2 and MM Biology-1a)	<input checked="" type="checkbox"/>	<input checked="" type="checkbox"/>	<input checked="" type="checkbox"/>	<input checked="" type="checkbox"/>	<input checked="" type="checkbox"/>	<input checked="" type="checkbox"/>	<input type="checkbox"/>
2. Limited dust generation and emissions to required thresholds (APM AIR-1, APM AIR-2, MM Air-1, MM Biology-1a, and MM GHG-1)	<input checked="" type="checkbox"/>	<input checked="" type="checkbox"/>	<input checked="" type="checkbox"/>	<input checked="" type="checkbox"/>	<input checked="" type="checkbox"/>	<input checked="" type="checkbox"/>	<input type="checkbox"/>
3. Avoided sensitive plant habitat (APM BIO-2, MM Biology-1a, MM Biology-2, and MM Biology-9)	<input checked="" type="checkbox"/>	<input checked="" type="checkbox"/>	<input checked="" type="checkbox"/>	<input checked="" type="checkbox"/>	<input checked="" type="checkbox"/>	<input checked="" type="checkbox"/>	<input type="checkbox"/>
4. Avoided sensitive wildlife habitat (APM BIO-3, MM Biology-1a, MM Biology-7, and MM Biology-8)	<input checked="" type="checkbox"/>	<input checked="" type="checkbox"/>	<input checked="" type="checkbox"/>	<input checked="" type="checkbox"/>	<input checked="" type="checkbox"/>	<input checked="" type="checkbox"/>	<input type="checkbox"/>
5. Avoided active bird nests or burrows (APM BIO-1, APM BIO-2, MM Biology-1a, and MM Biology-6)	<input checked="" type="checkbox"/>	<input checked="" type="checkbox"/>	<input checked="" type="checkbox"/>	<input checked="" type="checkbox"/>	<input checked="" type="checkbox"/>	<input checked="" type="checkbox"/>	<input type="checkbox"/>
6. Avoided sensitive water features and aquatic habitat (APM HAZ-1, MM Biology-1a, and APM HYDRO-2)	<input checked="" type="checkbox"/>	<input checked="" type="checkbox"/>	<input checked="" type="checkbox"/>	<input checked="" type="checkbox"/>	<input checked="" type="checkbox"/>	<input checked="" type="checkbox"/>	<input type="checkbox"/>
7. Installed/maintained erosion or sediment controls (APM BIO-2, APM BIO-4, MM Biology-1a, MM Geology-1, APM HYDRO-1, and MM Hydro-2)	<input checked="" type="checkbox"/>	<input checked="" type="checkbox"/>	<input checked="" type="checkbox"/>	<input checked="" type="checkbox"/>	<input checked="" type="checkbox"/>	<input checked="" type="checkbox"/>	<input type="checkbox"/>
8. Implemented invasive weed measures (MM Biology-3)	<input checked="" type="checkbox"/>	<input checked="" type="checkbox"/>	<input checked="" type="checkbox"/>	<input checked="" type="checkbox"/>	<input checked="" type="checkbox"/>	<input checked="" type="checkbox"/>	<input type="checkbox"/>

Weekly MMCRP Checklist

Day of the Week	Mon	Tue	Wed	Thu	Fri	Sat	Sun
Dates	11/14/1 ₊	11/15/1 ₊	11/16/1 ₊	11/17/1 ₊	11/18/1 ₊	11/19/1 ₊	
9. Managed hazardous materials and waste (APM BIO-2, MM Biology-1a, APM HAZ-1, and APM HAZ-2)	<input checked="" type="checkbox"/>	<input type="checkbox"/>	<input checked="" type="checkbox"/>	<input checked="" type="checkbox"/>	<input checked="" type="checkbox"/>	<input checked="" type="checkbox"/>	<input type="checkbox"/>
10. Implemented fire prevention measures (MM Biology-1a, APM HAZ-3, and MM Hazards-2)	<input checked="" type="checkbox"/>	<input checked="" type="checkbox"/>	<input checked="" type="checkbox"/>	<input checked="" type="checkbox"/>	<input checked="" type="checkbox"/>	<input checked="" type="checkbox"/>	<input type="checkbox"/>
11. Avoided known cultural, paleontological, and tribal resources (APM CUL-2, APM CUL-7, MM Cultural Resources-1, MM Cultural Resources-2, MM Cultural Resources-3, MM Cultural Resources-4, and MM Cultural Paleontology-1)	<input checked="" type="checkbox"/>	<input checked="" type="checkbox"/>	<input checked="" type="checkbox"/>	<input checked="" type="checkbox"/>	<input checked="" type="checkbox"/>	<input checked="" type="checkbox"/>	<input type="checkbox"/>
12. Limited construction noise to maximum levels (APM NOISE-1, APM NOISE-3, MM Noise-1, and MM Noise-2)	<input checked="" type="checkbox"/>	<input checked="" type="checkbox"/>	<input checked="" type="checkbox"/>	<input checked="" type="checkbox"/>	<input checked="" type="checkbox"/>	<input checked="" type="checkbox"/>	<input type="checkbox"/>
13. Maintain existing vehicle and trail access (APM REC-1, MM Recreation-2, APM TRANS-1, and MM Traffic-3)	<input checked="" type="checkbox"/>	<input checked="" type="checkbox"/>	<input checked="" type="checkbox"/>	<input checked="" type="checkbox"/>	<input checked="" type="checkbox"/>	<input checked="" type="checkbox"/>	<input type="checkbox"/>
14. Provided workers with required environmental trainings (APM BIO-1, APM BIO-2, MM Biology-1a, APM CUL-1, APM GHG-1, APM HAZ-1, APM HAZ-3, and APM HYDRO-1)	<input checked="" type="checkbox"/>	<input checked="" type="checkbox"/>	<input checked="" type="checkbox"/>	<input checked="" type="checkbox"/>	<input checked="" type="checkbox"/>	<input checked="" type="checkbox"/>	<input type="checkbox"/>
15. Implemented MMCRP procedures	<input checked="" type="checkbox"/>	<input checked="" type="checkbox"/>	<input checked="" type="checkbox"/>	<input checked="" type="checkbox"/>	<input checked="" type="checkbox"/>	<input checked="" type="checkbox"/>	<input type="checkbox"/>
SDG&E Specialty Monitoring							
16. Special-status wildlife (APM BIO-2, MM Biology-1a, MM Biology-7, and MM Biology-8)	<input checked="" type="checkbox"/>	<input checked="" type="checkbox"/>	<input checked="" type="checkbox"/>	<input checked="" type="checkbox"/>	<input checked="" type="checkbox"/>	<input checked="" type="checkbox"/>	<input type="checkbox"/>
17. Nesting birds/burrowing owls (APM BIO-1 and MM Biology-6)	<input checked="" type="checkbox"/>	<input checked="" type="checkbox"/>	<input checked="" type="checkbox"/>	<input checked="" type="checkbox"/>	<input checked="" type="checkbox"/>	<input checked="" type="checkbox"/>	<input type="checkbox"/>
18. Special-status plants (APM BIO-2, MM Biology-1a, MM Biology-3, and MM Biology-1b)	<input checked="" type="checkbox"/>	<input checked="" type="checkbox"/>	<input checked="" type="checkbox"/>	<input checked="" type="checkbox"/>	<input checked="" type="checkbox"/>	<input checked="" type="checkbox"/>	<input type="checkbox"/>
19. Aquatic/hydrologic resources (APM HYDRO-1 and MM Geology-1)	<input checked="" type="checkbox"/>	<input checked="" type="checkbox"/>	<input checked="" type="checkbox"/>	<input checked="" type="checkbox"/>	<input checked="" type="checkbox"/>	<input checked="" type="checkbox"/>	<input type="checkbox"/>
20. SWPPP/reclamation (APM HYDRO-1, MM Geology-1, and MM Biology-11)	<input checked="" type="checkbox"/>	<input checked="" type="checkbox"/>	<input checked="" type="checkbox"/>	<input checked="" type="checkbox"/>	<input checked="" type="checkbox"/>	<input checked="" type="checkbox"/>	<input type="checkbox"/>
21. Cultural resources (APM CUL-2, MM Cultural Resources-1, MM Cultural Resources-2, and MM Cultural Resources-3)	<input checked="" type="checkbox"/>	<input checked="" type="checkbox"/>	<input checked="" type="checkbox"/>	<input checked="" type="checkbox"/>	<input checked="" type="checkbox"/>	<input checked="" type="checkbox"/>	<input type="checkbox"/>
22. Paleontological resources (APM CUL-5, APM CUL-6, and MM Paleontology 1)	<input checked="" type="checkbox"/>	<input checked="" type="checkbox"/>	<input checked="" type="checkbox"/>	<input checked="" type="checkbox"/>	<input checked="" type="checkbox"/>	<input checked="" type="checkbox"/>	<input type="checkbox"/>
23. Tribal resources (MM Cultural Resources-4)	<input checked="" type="checkbox"/>	<input checked="" type="checkbox"/>	<input checked="" type="checkbox"/>	<input checked="" type="checkbox"/>	<input checked="" type="checkbox"/>	<input checked="" type="checkbox"/>	<input type="checkbox"/>
24. Fire management (APM HAZ-3)	<input checked="" type="checkbox"/>	<input checked="" type="checkbox"/>	<input checked="" type="checkbox"/>	<input checked="" type="checkbox"/>	<input checked="" type="checkbox"/>	<input checked="" type="checkbox"/>	<input type="checkbox"/>
D. SDG&E Record of Weekly Incidents							
Compliance Level 1: Occurrences	0	1	0	0	0	0	
Compliance Level 2: Minor Problems	0	0	0	0	0	0	
Compliance Level 3: Compliance Issues	0	0	0	0	0	0	
Compliance Level 4: Noncompliances	0	0	0	0	0	0	
Total Compliance Level Incidents	0	1	0	0	0	0	0
Health and Safety Incidents	0	0	0	0	0	0	
Public Complaints	0	0	0	0	0	0	
Total Incidents	0	1	0	0	0	0	0



Salt Creek Substation Project
WEEKLY ENVIRONMENTAL COMPLIANCE REPORT
November 21 – November 23, 2016

INTRODUCTION

This report provides an overview of construction progress and applicant-proposed measure (APM) and mitigation measure (MM) implementation during construction of the San Diego Gas & Electric Company (SDG&E) Salt Creek Substation Project (Project) during the week ending on November 23, 2016. Work on the Project was conducted by SDG&E, Geo Pacific Services, Inc. (GeoPac), Suffolk, and their construction subcontractors.

CONSTRUCTION OVERVIEW

On June 21, 2016, the California Public Utilities Commission (CPUC) issued a Notice to Proceed for construction of the Project. Construction of the Salt Creek Substation kicked off on July 18, 2016. During this reporting period, construction activities occurred November 21, 2016 through November 23, 2016 and are listed in the following section by Project component. A Lead Environmental Inspector (LEI) was on-site November 21 – November 23.

CONSTRUCTION ACTIVITIES

Salt Creek Substation

Construction activities during this reporting period included mobilization, conducting earthwork, installation of additional BMPs, developing site surfaces, trenching and concrete pour for 12kV and 69kV conduit, installation of fencing along Road A, preparation of slopes around the bio-retention basin and the masonry wall, and curb and gutter work on Road A. In addition, the below grade contractor (Suffolk) continued to build pads in the substation area.

WORKER ENVIRONMENTAL AWARENESS PROGRAM

Five new project personnel attended the required environmental training as part of the Project Worker Environmental Awareness Program (WEAP). To date, approximately 307 Project personnel have received the required environmental awareness education.

ENVIRONMENTAL COMPLIANCE SUMMARY

The following subsections provide an assessment of environmental resources and a summary of the APMs, MMs, and permit conditions that were implemented during the week ending on November 23, 2016.

Air Quality

During earth moving activities a water truck was used to control dust. During this reporting period all pavement was kept clean. No winds occurred that were higher than 20 mph.

Biological Resources

During this monitoring period, construction occurred within the project limits of disturbance, adjacent to, but not within the special-status plant locations. No special-status species were observed during the monitoring period.

Cultural and Paleontological Resources

Cultural and Native American monitors were not on-site during construction activities from November 21 through November 23, 2016. During this reporting period, excavation was limited to fill material, and native material previously graded to at least 10-feet below the surface, where the potential for impacts to cultural and archaeological resources was extremely low. Cultural and Native American monitors were on-call each day of construction, but were not called to the site. A paleontological monitor was on-site during construction activities from November 21 through November 23, 2016.

Hazardous Materials and Waste

All fueling was conducted in appropriate areas and all vehicles and equipment were checked for leaks. There were no spills observed during this reporting period.

On November 21, 2016, a loaded cement truck driving along the project's access road skidded, causing the rear end of the truck to veer off the road by approximately 5-6 feet onto the roads shoulder. The front of the truck remained on the access road. The truck skidded due to the intermittent precipitation that fell throughout the day which caused the access road to become slick with moisture. To stabilize the cement truck, the cement slurry was off-loaded into the buckets of front loaders and brought onto the project site. Once the cement slurry was unloaded, the front loader pulled the truck forward approximately 5-6 feet so that the back end of the truck was returned to the road. Although the truck slid onto the shoulder next to vegetation, no damage to any vegetation occurred.

Noise

Construction activities during this reporting period were confined to Monday through Wednesday and occurred between 7:00 a.m. and 7:00 p.m.

Traffic and Transportation

The traffic control plan approved by the City of Chula Vista was implemented and general traffic measures were adhered to. The majority of project personnel are parking their personal vehicles within a designated personal vehicle parking area within the project limits and established parking area adjacent to the southeast corner of the project limits.

Storm Water Compliance

During this reporting period, the project SWPPP and BMPs were implemented in accordance with the SDG&E Water Quality Construction BMP Manual. Permanent slopes within the project site were sprayed with BFM during the week of October 10 through October 15, 2016. Permanent slopes that were not sprayed and/or were under active construction in October were sprayed with BFM on Monday November 14, 2016. The Qualified SWPPP Practitioner inspected the site on November 21, 22, and 23 for weekly and rain inspections. There were no deficiencies recorded. The precipitation on November 21 was measured as 0.65 inches (on-site rain gauge) and qualified as a rain event.

Rain was also predicted for November 26, 2016. In preparation for the rain, all spoil piles were removed and or situated within the masonry wall area of the substation pad area. Roads were swept of loose soil and debris, and additional BMPs (wattle logs) were added where needed.

Non-Compliances

The observation of the cement truck partially skidding off the access road on November 21, 2016 was reported as a Level 1: Occurrence. The truck was properly secured and safety measures were implemented. Safety measures which were immediately implemented included the off-loading of cement material and the cement company's safety crew showing up to ensure that there was no chance of the truck skidding further onto the access road. All project requirements were followed adequately. The occurrence did not put any resources at risk (i.e., air quality, water quality, vegetation, or wildlife).

ATTACHMENT A: PHOTOGRAPHS



Salt Creek Substation Project
ENVIRONMENTAL COMPLIANCE STATUS REPORT
Attachment A: Photographs



Photograph 1:
Installation of fencing along Road A occurred during the week of November 21, 2016.



Photograph 2:
Construction of the curb and gutter along Road A occurred during the week of November 21, 2016.



Photograph 3:
Suffolk construction crew building electrical pads in the substation area occurred during the week of November 21, 2016.



Photograph 4:
On November 21, 2016, the rear end of a cement truck veered off the project's access road.

ATTACHMENT B: DAILY LOGS

Salt Creek Daily Inspection

Monitor Date: 11/21/2016

Weather Observations

Start Temperature: 59°F Midday Temperature: 61°F End Temperature: 60°F
Weather Conditions: Raining
Precipitation: Light
Cloud Cover: 100

Construction Details

Construction Start Time: 7:00 AM Construction End Time: 5:00 PM

Construction Activities

- | | |
|---|---|
| <input checked="" type="checkbox"/> Mobilize materials equipment or prepared work areas | <input type="checkbox"/> Installed aboveground facilities |
| <input type="checkbox"/> Cleared or trimmed vegetation | <input type="checkbox"/> Installed landscaping |
| <input checked="" type="checkbox"/> Conduct earthwork | <input type="checkbox"/> Demobilized materials equipment or cleaned up work areas |
| <input checked="" type="checkbox"/> Developed site drainage facilities | |
| <input checked="" type="checkbox"/> Developed site surfaces | |
| <input checked="" type="checkbox"/> Installed underground facilities | |

Was a safety check-in conducted? Y Approximate Number of Construction Personnel On-site: 30

General Notes/Comments Trenching for 12kV conduit, building pads in substation area, fencing on Road A, conduit installation and earthwork around masonry wall. Light rain drizzle throughout the day.

General Issues

Monitor: Ron Walker

- | | |
|--|-----|
| A. Workplace limits verified and properly marked? | Yes |
| B. All activities within approved workspace limits? | Yes |
| C. Only approved access roads utilized for ingress and egress? | Yes |
| D. Access road signs in place? | Yes |
| E. Trash and debris contained and disposed of in proper manner? | Yes |
| F. All crew on site displaying hard-hat decals from WEAP training? | Yes |
| G. Speed limit observed by all project personnel? | Yes |
| H. Was construction noise limited to maximum allowed levels (mufflers being used, construction occurring only within allowed hours, vehicle idling minimized etc.) | Yes |
| I. Was existing vehicle and trail access maintained? | Yes |
| J. Did any health and safety incidents occur? | No |
| K. Were there any public complaints? | No |
| L. Was the project shut down for any reason today? | No |
| M. Were there any other incidents to report? | Yes |

The rear end of cement truck slide 4-5 off of project access road, portion of concrete slurry was removed from truck and the truck was pulled forward and back onto road. There was no vegetation damaged.

Environmental Resources

Monitor: Ron Walker

- | | |
|---|-----|
| Compliance Level: In Compliance | Yes |
| A. Were all active work areas and access roads clearly marked with staking or flagging? | Yes |
| B. Did all vehicles and personnel stay in approved work areas? | Yes |
| C. Was fire suppression equipment within 50 feet of each active work area? | Yes |
| D. Were all construction activities completed between 7:00 a.m. and 7:00 p.m.? | |

Salt Creek Daily Inspection

Monitor Date: 11/21/2016

Biological Resources

Monitor: Ron Walker

Compliance Level: In Compliance

- A. Were all work activities conducted outside of any established nesting bird buffer, active nests and/or burrows? Yes
- B. Were all equipment/vehicles that arrived on site clean and free of vegetative debris/soil? Yes
- C. Were any special-status species observed? No
- D. Did work activities occur in or adjacent to known locations of Special status plants? Yes
Known locations of special status plants exist outside and adjacent to the project limits. No work was conducted outside of the project limits.
- E. Did any construction activity occur within an ESA? No
- F. Was the work area surveyed for sensitive species immediately prior to ground-disturbing or vegetation removal activities? Yes
- G. Are all open excavations/trenches inspected for entrapped wildlife at least twice daily? Yes
- H. Are all large/steep excavations/trenches covered and/or fenced nightly? Yes
- I. Are excavations covered or equipped with earthen wildlife escape ramps by the end of the day? Yes
-

Cultural Resources

No Cultural Data Collected

Paleontological Resources

Monitor: Jen DiCenzo

Compliance Level: In Compliance

- A. Were ground disturbing activities conducted within a paleontological sensitive area? No new discoveries Yes
- B. Were any paleontological materials identified? No
- C. Were any paleontological materials damaged or destroyed? No

Salt Creek Daily Inspection

Monitor Date: 11/21/2016

Dust Control

Monitor: Ron Walker

Compliance Level: In Compliance

- | | |
|---|-----|
| A. Are materials carried off site covered or watered prior to leaving site? | N/A |
| B. Are exposed stockpiles of dirt covered or watered to control fugitive dust | Yes |
| C. Is all soil material tracked onto paved public roads swept daily? | Yes |
| D. Are all work areas and access roads watered daily if there is persistent fugitive dust is visible beyond the work area boundaries? | Yes |
| E. Are all loads covered or have a minimum of two feet of freeboard? | N/A |
| F. If sustained winds of 20 mph or greater are experienced, were soil disturbing activities terminated? | N/A |
| G. Are rock aprons or rattle/shaker plates installed at the intersections of dirt access routes and paved public roadways? | Yes |
-

Erosion and Sediment

Monitor: Ron Walker

Compliance Level: In Compliance

- | | |
|--|-----|
| A. Are there sufficient quantities of erosion control materials stockpiled at the construction site? | Yes |
| B. Are all locations of temporary stockpiles in approved areas and appropriately protected? | Yes |
| C. Were any rolled erosion control products used? | Yes |
| D. Were rolled erosion products comprised of entirely natural fiber biodegradable materials? | Yes |
-

Hazardous Substances

Monitor: Ron Walker

Compliance Level: In Compliance

- | | |
|--|-----|
| A. Is fueling conducted in appropriate areas with appropriate containment and spill materials? | Yes |
| B. Are vehicles and equipment checked for leaks? | Yes |
| C. Were any leaks observed? | No |
| D. Are spills cleaned up and disposed of properly? | Yes |
| E. Are clean-up materials available on site in case of a spill? | Yes |
| F. Was discolored or odiferous soil or groundwater encountered during excavation activities? | No |
-

Waste

Monitor: Ron Walker

Compliance Level: In Compliance

- | | |
|--|-----|
| A. Is project-generated litter removed from the construction site daily? | Yes |
| B. Are waste management receptacle levels appropriately maintained? | Yes |

Salt Creek Daily Inspection

Monitor Date: 11/22/2016

Weather Observations

Start Temperature: 52°F Midday Temperature: 67°F End Temperature: 65°F
Weather Conditions: Partially Sunny
Precipitation: None
Cloud Cover: 20

Construction Details

Construction Start Time: 7:00 AM Construction End Time: 5:15 PM

Construction Activities

- | | |
|---|---|
| <input checked="" type="checkbox"/> Mobilize materials equipment or prepared work areas | <input type="checkbox"/> Installed aboveground facilities |
| <input type="checkbox"/> Cleared or trimmed vegetation | <input type="checkbox"/> Installed landscaping |
| <input checked="" type="checkbox"/> Conduct earthwork | <input type="checkbox"/> Demobilized materials equipment or cleaned up work areas |
| <input checked="" type="checkbox"/> Developed site drainage facilities | |
| <input checked="" type="checkbox"/> Developed site surfaces | |
| <input checked="" type="checkbox"/> Installed underground facilities | |

Was a safety check-in conducted? Y Approximate Number of Construction Personnel On-site: 30

General Notes/Comments Trenching for 12kV getaway, conduit slurry pour, Alcorn fencing on-site, installation of BMPs, and construction of substation pad area.

General Issues

Monitor: Ron Walker

- | | |
|--|-----|
| A. Workplace limits verified and properly marked? | Yes |
| B. All activities within approved workspace limits? | Yes |
| C. Only approved access roads utilized for ingress and egress? | Yes |
| D. Access road signs in place? | Yes |
| E. Trash and debris contained and disposed of in proper manner? | Yes |
| F. All crew on site displaying hard-hat decals from WEAP training? | Yes |
| G. Speed limit observed by all project personnel? | Yes |
| H. Was construction noise limited to maximum allowed levels (mufflers being used, construction occurring only within allowed hours, vehicle idling minimized etc.) | Yes |
| I. Was existing vehicle and trail access maintained? | Yes |
| J. Did any health and safety incidents occur? | No |
| K. Were there any public complaints? | No |
| L. Was the project shut down for any reason today? | No |
| M. Were there any other incidents to report? | No |
-

Environmental Resources

Monitor: Ron Walker

Compliance Level: In Compliance

- | | |
|---|-----|
| A. Were all active work areas and access roads clearly marked with staking or flagging? | Yes |
| B. Did all vehicles and personnel stay in approved work areas? | Yes |
| C. Was fire suppression equipment within 50 feet of each active work area? | Yes |
| D. Were all construction activities completed between 7:00 a.m. and 7:00 p.m.? | Yes |

Salt Creek Daily Inspection

Monitor Date: 11/22/2016

Biological Resources

Monitor: Ron Walker

Compliance Level: In Compliance

- A. Were all work activities conducted outside of any established nesting bird buffer, active nests and/or burrows? **Yes**
- B. Were all equipment/vehicles that arrived on site clean and free of vegetative debris/soil? **Yes**
- C. Were any special-status species observed? **No**
- D. Did work activities occur in or adjacent to known locations of Special status plants? **Yes**
Known locations of special status plants exist outside and adjacent to the project limits. No work was conducted outside of the project limits.
- E. Did any construction activity occur within an ESA? **No**
- F. Was the work area surveyed for sensitive species immediately prior to ground-disturbing or vegetation removal activities? **Yes**
- G. Are all open excavations/trenches inspected for entrapped wildlife at least twice daily? **Yes**
- H. Are all large/steep excavations/trenches covered and/or fenced nightly? **Yes**
- I. Are excavations covered or equipped with earthen wildlife escape ramps by the end of the day? **Yes**
-

Cultural Resources

No Cultural Data Collected

Paleontological Resources

Monitor: Jen DiCenzo

Compliance Level: In Compliance

- A. Were ground disturbing activities conducted within a paleontological sensitive area? **Yes**
No new discoveries
- B. Were any paleontological materials identified? **No**
- C. Were any paleontological materials damaged or destroyed? **No**

Salt Creek Daily Inspection

Monitor Date: 11/22/2016

Dust Control

Monitor: Ron Walker

Compliance Level: In Compliance

- | | |
|---|-----|
| A. Are materials carried off site covered or watered prior to leaving site? | N/A |
| B. Are exposed stockpiles of dirt covered or watered to control fugitive dust | Yes |
| C. Is all soil material tracked onto paved public roads swept daily? | Yes |
| D. Are all work areas and access roads watered daily if there is persistent fugitive dust is visible beyond the work area boundaries? | Yes |
| E. Are all loads covered or have a minimum of two feet of freeboard? | N/A |
| F. If sustained winds of 20 mph or greater are experienced, were soil disturbing activities terminated? | N/A |
| G. Are rock aprons or rattle/shaker plates installed at the intersections of dirt access routes and paved public roadways? | Yes |
-

Erosion and Sediment

Monitor: Ron Walker

Compliance Level: In Compliance

- | | |
|--|-----|
| A. Are there sufficient quantities of erosion control materials stockpiled at the construction site? | Yes |
| B. Are all locations of temporary stockpiles in approved areas and appropriately protected? | Yes |
| C. Were any rolled erosion control products used? | Yes |
| D. Were rolled erosion products comprised of entirely natural fiber biodegradable materials? | Yes |
-

Hazardous Substances

Monitor: Ron Walker

Compliance Level: In Compliance

- | | |
|--|-----|
| A. Is fueling conducted in appropriate areas with appropriate containment and spill materials? | Yes |
| B. Are vehicles and equipment checked for leaks? | Yes |
| C. Were any leaks observed? | No |
| D. Are spills cleaned up and disposed of properly? | Yes |
| E. Are clean-up materials available on site in case of a spill? | Yes |
| F. Was discolored or odiferous soil or groundwater encountered during excavation activities? | No |
-

Waste

Monitor: Ron Walker

Compliance Level: In Compliance

- | | |
|--|-----|
| A. Is project-generated litter removed from the construction site daily? | Yes |
| B. Are waste management receptacle levels appropriately maintained? | Yes |

Salt Creek Daily Inspection

Monitor Date: 11/23/2016

Weather Observations

Start Temperature: 51°F Midday Temperature: 68°F End Temperature: 65°F
Weather Conditions: Partially Sunny
Precipitation: None
Cloud Cover: 40

Construction Details

Construction Start Time: 7:00 AM Construction End Time: 4:50 PM

Construction Activities

- | | |
|---|---|
| <input checked="" type="checkbox"/> Mobilize materials equipment or prepared work areas | <input type="checkbox"/> Installed aboveground facilities |
| <input type="checkbox"/> Cleared or trimmed vegetation | <input type="checkbox"/> Installed landscaping |
| <input checked="" type="checkbox"/> Conduct earthwork | <input type="checkbox"/> Demobilized materials equipment or cleaned up work areas |
| <input checked="" type="checkbox"/> Developed site drainage facilities | |
| <input checked="" type="checkbox"/> Developed site surfaces | |
| <input checked="" type="checkbox"/> Installed underground facilities | |

Was a safety check-in conducted? Y Approximate Number of Construction Personnel On-site: 30

General Notes/Comments 22kV trench slurry pours, substation pads concrete and slurry pours, and earthwork around masonry wall.

General Issues

Monitor: Ron Walker

- | | |
|--|-----|
| A. Workplace limits verified and properly marked? | Yes |
| B. All activities within approved workspace limits? | Yes |
| C. Only approved access roads utilized for ingress and egress? | Yes |
| D. Access road signs in place? | Yes |
| E. Trash and debris contained and disposed of in proper manner? | Yes |
| F. All crew on site displaying hard-hat decals from WEAP training? | Yes |
| G. Speed limit observed by all project personnel? | Yes |
| H. Was construction noise limited to maximum allowed levels (mufflers being used, construction occurring only within allowed hours, vehicle idling minimized etc.) | Yes |
| I. Was existing vehicle and trail access maintained? | Yes |
| J. Did any health and safety incidents occur? | No |
| K. Were there any public complaints? | No |
| L. Was the project shut down for any reason today? | No |
| M. Were there any other incidents to report? | No |
-

Environmental Resources

Monitor: Ron Walker

Compliance Level: In Compliance

- | | |
|---|-----|
| A. Were all active work areas and access roads clearly marked with staking or flagging? | Yes |
| B. Did all vehicles and personnel stay in approved work areas? | Yes |
| C. Was fire suppression equipment within 50 feet of each active work area? | Yes |
| D. Were all construction activities completed between 7:00 a.m. and 7:00 p.m.? | Yes |

Salt Creek Daily Inspection

Monitor Date: 11/23/2016

Biological Resources

Monitor: Ron Walker

Compliance Level: In Compliance

- A. Were all work activities conducted outside of any established nesting bird buffer, active nests and/or burrows? **Yes**
- B. Were all equipment/vehicles that arrived on site clean and free of vegetative debris/soil? **Yes**
- C. Were any special-status species observed? **No**
- D. Did work activities occur in or adjacent to known locations of Special status plants? **Yes**
Known locations of special status plants exist outside and adjacent to the project limits. No work was conducted outside of the project limits.
- E. Did any construction activity occur within an ESA? **No**
- F. Was the work area surveyed for sensitive species immediately prior to ground-disturbing or vegetation removal activities? **Yes**
- G. Are all open excavations/trenches inspected for entrapped wildlife at least twice daily? **Yes**
- H. Are all large/steep excavations/trenches covered and/or fenced nightly? **Yes**
- I. Are excavations covered or equipped with earthen wildlife escape ramps by the end of the day? **Yes**
-

Cultural Resources

No Cultural Data Collected

Paleontological Resources

Monitor: Jen DiCenzo

Compliance Level: In Compliance

- A. Were ground disturbing activities conducted within a paleontological sensitive area? **Yes**
No new discoveries
- B. Were any paleontological materials identified? **No**
- C. Were any paleontological materials damaged or destroyed? **No**

Salt Creek Daily Inspection

Monitor Date: 11/23/2016

Dust Control

Monitor: Ron Walker

Compliance Level: In Compliance

- | | |
|---|-----|
| A. Are materials carried off site covered or watered prior to leaving site? | N/A |
| B. Are exposed stockpiles of dirt covered or watered to control fugitive dust | Yes |
| C. Is all soil material tracked onto paved public roads swept daily? | Yes |
| D. Are all work areas and access roads watered daily if there is persistent fugitive dust is visible beyond the work area boundaries? | Yes |
| E. Are all loads covered or have a minimum of two feet of freeboard? | N/A |
| F. If sustained winds of 20 mph or greater are experienced, were soil disturbing activities terminated? | N/A |
| G. Are rock aprons or rattle/shaker plates installed at the intersections of dirt access routes and paved public roadways? | Yes |
-

Erosion and Sediment

Monitor: Ron Walker

Compliance Level: In Compliance

- | | |
|--|-----|
| A. Are there sufficient quantities of erosion control materials stockpiled at the construction site? | Yes |
| B. Are all locations of temporary stockpiles in approved areas and appropriately protected? | Yes |
| C. Were any rolled erosion control products used? | Yes |
| D. Were rolled erosion products comprised of entirely natural fiber biodegradable materials? | Yes |
-

Hazardous Substances

Monitor: Ron Walker

Compliance Level: In Compliance

- | | |
|--|-----|
| A. Is fueling conducted in appropriate areas with appropriate containment and spill materials? | Yes |
| B. Are vehicles and equipment checked for leaks? | Yes |
| C. Were any leaks observed? | No |
| D. Are spills cleaned up and disposed of properly? | Yes |
| E. Are clean-up materials available on site in case of a spill? | Yes |
| F. Was discolored or odiferous soil or groundwater encountered during excavation activities? | No |
-

Waste

Monitor: Ron Walker

Compliance Level: In Compliance

- | | |
|--|-----|
| A. Is project-generated litter removed from the construction site daily? | Yes |
| B. Are waste management receptacle levels appropriately maintained? | Yes |

ATTACHMENT C: MMCRP CHECKLIST

SALT CREEK SUBSTATION PROJECT

Weekly MMCRP Checklist

Completed by: Ron Walker

Organization: AECOM

Position: LEI

Day of the Week	Mon	Tue	Wed	Thu	Fri	Sat	Sun
Date (mm/dd/yy)	11/21/14	11/22/14	11/23/14				
A. Daily Work Hours and Workforce							
Start Time (hh:mm am/pm)	7:00 am	7:00 am	7:00 am				
Stop Time	5:00 pm	5:15 pm	4:50 pm				
Construction Personnel Onsite	30	30	30				
Compliance Personnel Onsite	2	2	2				
Total Personnel Onsite	32	32	32	1	0	0	0
B. Daily Construction Activities – Check only if applicable							
1. Mobilized materials/equipment or prepared work areas	<input checked="" type="checkbox"/>	<input checked="" type="checkbox"/>	<input checked="" type="checkbox"/>	<input type="checkbox"/>	<input type="checkbox"/>	<input type="checkbox"/>	<input type="checkbox"/>
2. Cleared or trimmed vegetation	<input type="checkbox"/>	<input type="checkbox"/>	<input type="checkbox"/>	<input type="checkbox"/>	<input type="checkbox"/>	<input type="checkbox"/>	<input type="checkbox"/>
3. Conducted earthwork (grading, trenching, or other ground disturbance)	<input checked="" type="checkbox"/>	<input checked="" type="checkbox"/>	<input checked="" type="checkbox"/>	<input type="checkbox"/>	<input type="checkbox"/>	<input type="checkbox"/>	<input type="checkbox"/>
4. Developed site surfaces (substation pad or access roads)	<input checked="" type="checkbox"/>	<input checked="" type="checkbox"/>	<input checked="" type="checkbox"/>	<input type="checkbox"/>	<input type="checkbox"/>	<input type="checkbox"/>	<input type="checkbox"/>
5. Developed site drainage facilities	<input checked="" type="checkbox"/>	<input checked="" type="checkbox"/>	<input checked="" type="checkbox"/>	<input type="checkbox"/>	<input type="checkbox"/>	<input type="checkbox"/>	<input type="checkbox"/>
6. Installed underground facilities	<input checked="" type="checkbox"/>	<input checked="" type="checkbox"/>	<input checked="" type="checkbox"/>	<input type="checkbox"/>	<input type="checkbox"/>	<input type="checkbox"/>	<input type="checkbox"/>
7. Installed aboveground facilities	<input type="checkbox"/>	<input type="checkbox"/>	<input type="checkbox"/>	<input type="checkbox"/>	<input type="checkbox"/>	<input type="checkbox"/>	<input type="checkbox"/>
8. Installed landscaping	<input type="checkbox"/>	<input type="checkbox"/>	<input type="checkbox"/>	<input type="checkbox"/>	<input type="checkbox"/>	<input type="checkbox"/>	<input type="checkbox"/>
9. Demobilized materials/equipment or cleaned up work areas	<input type="checkbox"/>	<input type="checkbox"/>	<input type="checkbox"/>	<input type="checkbox"/>	<input type="checkbox"/>	<input type="checkbox"/>	<input type="checkbox"/>
10. Other	<input type="checkbox"/>	<input type="checkbox"/>	<input type="checkbox"/>	<input type="checkbox"/>	<input type="checkbox"/>	<input type="checkbox"/>	<input type="checkbox"/>
C. Daily Compliance Activities – Check only if applicable and implemented adequately without incident							
Avoidance and Minimization, and General Monitoring							
1. Limited activities to approved work areas and access roads (APM BIO-2 and MM Biology-1a)	<input checked="" type="checkbox"/>	<input checked="" type="checkbox"/>	<input checked="" type="checkbox"/>	<input type="checkbox"/>	<input type="checkbox"/>	<input type="checkbox"/>	<input type="checkbox"/>
2. Limited dust generation and emissions to required thresholds (APM AIR-1, APM AIR-2, MM Air-1, MM Biology-1a, and MM GHG-1)	<input checked="" type="checkbox"/>	<input checked="" type="checkbox"/>	<input checked="" type="checkbox"/>	<input type="checkbox"/>	<input type="checkbox"/>	<input type="checkbox"/>	<input type="checkbox"/>
3. Avoided sensitive plant habitat (APM BIO-2, MM Biology-1a, MM Biology-2, and MM Biology-9)	<input checked="" type="checkbox"/>	<input checked="" type="checkbox"/>	<input checked="" type="checkbox"/>	<input type="checkbox"/>	<input type="checkbox"/>	<input type="checkbox"/>	<input type="checkbox"/>
4. Avoided sensitive wildlife habitat (APM BIO-3, MM Biology-1a, MM Biology-7, and MM Biology-8)	<input checked="" type="checkbox"/>	<input checked="" type="checkbox"/>	<input checked="" type="checkbox"/>	<input type="checkbox"/>	<input type="checkbox"/>	<input type="checkbox"/>	<input type="checkbox"/>
5. Avoided active bird nests or burrows (APM BIO-1, APM BIO-2, MM Biology-1a, and MM Biology-6)	<input checked="" type="checkbox"/>	<input checked="" type="checkbox"/>	<input checked="" type="checkbox"/>	<input type="checkbox"/>	<input type="checkbox"/>	<input type="checkbox"/>	<input type="checkbox"/>
6. Avoided sensitive water features and aquatic habitat (APM HAZ-1, MM Biology-1a, and APM HYDRO-2)	<input checked="" type="checkbox"/>	<input checked="" type="checkbox"/>	<input checked="" type="checkbox"/>	<input type="checkbox"/>	<input type="checkbox"/>	<input type="checkbox"/>	<input type="checkbox"/>
7. Installed/maintained erosion or sediment controls (APM BIO-2, APM BIO-4, MM Biology-1a, MM Geology-1, APM HYDRO-1, and MM Hydro-2)	<input checked="" type="checkbox"/>	<input checked="" type="checkbox"/>	<input checked="" type="checkbox"/>	<input type="checkbox"/>	<input type="checkbox"/>	<input type="checkbox"/>	<input type="checkbox"/>
8. Implemented invasive weed measures (MM Biology-3)	<input checked="" type="checkbox"/>	<input checked="" type="checkbox"/>	<input checked="" type="checkbox"/>	<input type="checkbox"/>	<input type="checkbox"/>	<input type="checkbox"/>	<input type="checkbox"/>

Weekly MMCRP Checklist

Day of the Week	Mon	Tue	Wed	Thu	Fri	Sat	Sun
Dates	11/21/14 ⁺	11/22/14 ⁺	11/23/14 ⁺				
9. Managed hazardous materials and waste (APM BIO-2, MM Biology-1a, APM HAZ-1, and APM HAZ-2)	<input checked="" type="checkbox"/>	<input checked="" type="checkbox"/>	<input checked="" type="checkbox"/>	<input type="checkbox"/>	<input type="checkbox"/>	<input type="checkbox"/>	<input type="checkbox"/>
10. Implemented fire prevention measures (MM Biology-1a, APM HAZ-3, and MM Hazards-2)	<input checked="" type="checkbox"/>	<input checked="" type="checkbox"/>	<input checked="" type="checkbox"/>	<input type="checkbox"/>	<input type="checkbox"/>	<input type="checkbox"/>	<input type="checkbox"/>
11. Avoided known cultural, paleontological, and tribal resources (APM CUL-2, APM CUL-7, MM Cultural Resources-1, MM Cultural Resources-2, MM Cultural Resources-3, MM Cultural Resources-4, and MM Cultural Paleontology-1)	<input checked="" type="checkbox"/>	<input checked="" type="checkbox"/>	<input checked="" type="checkbox"/>	<input type="checkbox"/>	<input type="checkbox"/>	<input type="checkbox"/>	<input type="checkbox"/>
12. Limited construction noise to maximum levels (APM NOISE-1, APM NOISE-3, MM Noise-1, and MM Noise-2)	<input checked="" type="checkbox"/>	<input checked="" type="checkbox"/>	<input checked="" type="checkbox"/>	<input type="checkbox"/>	<input type="checkbox"/>	<input type="checkbox"/>	<input type="checkbox"/>
13. Maintain existing vehicle and trail access (APM REC-1, MM Recreation-2, APM TRANS-1, and MM Traffic-3)	<input checked="" type="checkbox"/>	<input checked="" type="checkbox"/>	<input checked="" type="checkbox"/>	<input type="checkbox"/>	<input type="checkbox"/>	<input type="checkbox"/>	<input type="checkbox"/>
14. Provided workers with required environmental trainings (APM BIO-1, APM BIO-2, MM Biology-1a, APM CUL-1, APM GHG-1, APM HAZ-1, APM HAZ-3, and APM HYDRO-1)	<input checked="" type="checkbox"/>	<input checked="" type="checkbox"/>	<input checked="" type="checkbox"/>	<input type="checkbox"/>	<input type="checkbox"/>	<input type="checkbox"/>	<input type="checkbox"/>
15. Implemented MMCRP procedures	<input checked="" type="checkbox"/>	<input checked="" type="checkbox"/>	<input checked="" type="checkbox"/>	<input type="checkbox"/>	<input type="checkbox"/>	<input type="checkbox"/>	<input type="checkbox"/>
SDG&E Specialty Monitoring							
16. Special-status wildlife (APM BIO-2, MM Biology-1a, MM Biology-7, and MM Biology-8)	<input checked="" type="checkbox"/>	<input checked="" type="checkbox"/>	<input checked="" type="checkbox"/>	<input type="checkbox"/>	<input type="checkbox"/>	<input type="checkbox"/>	<input type="checkbox"/>
17. Nesting birds/burrowing owls (APM BIO-1 and MM Biology-6)	<input checked="" type="checkbox"/>	<input checked="" type="checkbox"/>	<input checked="" type="checkbox"/>	<input type="checkbox"/>	<input type="checkbox"/>	<input type="checkbox"/>	<input type="checkbox"/>
18. Special-status plants (APM BIO-2, MM Biology-1a, MM Biology-3, and MM Biology-1b)	<input checked="" type="checkbox"/>	<input checked="" type="checkbox"/>	<input checked="" type="checkbox"/>	<input type="checkbox"/>	<input type="checkbox"/>	<input type="checkbox"/>	<input type="checkbox"/>
19. Aquatic/hydrologic resources (APM HYDRO-1 and MM Geology-1)	<input checked="" type="checkbox"/>	<input checked="" type="checkbox"/>	<input checked="" type="checkbox"/>	<input type="checkbox"/>	<input type="checkbox"/>	<input type="checkbox"/>	<input type="checkbox"/>
20. SWPPP/reclamation (APM HYDRO-1, MM Geology-1, and MM Biology-11)	<input checked="" type="checkbox"/>	<input checked="" type="checkbox"/>	<input checked="" type="checkbox"/>	<input type="checkbox"/>	<input type="checkbox"/>	<input type="checkbox"/>	<input type="checkbox"/>
21. Cultural resources (APM CUL-2, MM Cultural Resources-1, MM Cultural Resources-2, and MM Cultural Resources-3)	<input checked="" type="checkbox"/>	<input checked="" type="checkbox"/>	<input checked="" type="checkbox"/>	<input type="checkbox"/>	<input type="checkbox"/>	<input type="checkbox"/>	<input type="checkbox"/>
22. Paleontological resources (APM CUL-5, APM CUL-6, and MM Paleontology 1)	<input checked="" type="checkbox"/>	<input checked="" type="checkbox"/>	<input checked="" type="checkbox"/>	<input type="checkbox"/>	<input type="checkbox"/>	<input type="checkbox"/>	<input type="checkbox"/>
23. Tribal resources (MM Cultural Resources-4)	<input checked="" type="checkbox"/>	<input checked="" type="checkbox"/>	<input checked="" type="checkbox"/>	<input type="checkbox"/>	<input type="checkbox"/>	<input type="checkbox"/>	<input type="checkbox"/>
24. Fire management (APM HAZ-3)	<input checked="" type="checkbox"/>	<input checked="" type="checkbox"/>	<input checked="" type="checkbox"/>	<input type="checkbox"/>	<input type="checkbox"/>	<input type="checkbox"/>	<input type="checkbox"/>
D. SDG&E Record of Weekly Incidents							
Compliance Level 1: Occurrences	1	0	0	0			
Compliance Level 2: Minor Problems	0	0	0	0	0		
Compliance Level 3: Compliance Issues	0	0	0	0	0		
Compliance Level 4: Noncompliances	0	0	0	0	0		
Total Compliance Level Incidents	1	0	0	0	0	0	0
Health and Safety Incidents	0	0	0	0	0		
Public Complaints	0	0	0	0	0		
Total Incidents	1	0	0	0	0	0	0