

## PUBLIC UTILITIES COMMISSION

505 VAN NESS AVENUE  
SAN FRANCISCO, CA 94102-3298



March 17, 2015

Ms. Rebecca W. Giles  
San Diego Gas and Electric Company  
8326 Century Park Court  
San Diego, CA 92123-4150

**RE: Request for Additional Follow-up Data #9 – Certificate of Public Convenience and Necessity for the Sycamore-Peñasquitos 230-Kilovolt Transmission Line Project – Application No. A. 14-04-011**

Dear Ms. Giles:

The California Public Utilities Commission (CPUC) Energy Division CEQA Unit has completed its review of San Diego Gas and Electric Company's (SDG&E) application (A. 14-04-011) and related Proponent's Environmental Assessment (PEA) for a Certificate of Public Convenience and Necessity (CPCN) for the Sycamore-Peñasquitos 230-Kilovolt Transmission Line Project (Proposed Project) and SDG&E's responses to Data Requests #1 through #7.

The CPUC requests clarifications to some of SDG&E's prior data request responses as indicated in the attached data needs Table 1, below.

Information provided by SDG&E in response to this Request for Additional Follow-up Data should be filed as supplements to Application A. 14-04-011. One set of responses should be sent to the Energy Division and one to our consultant, Panorama Environmental, in both hardcopy and electronic format. We request that SDG&E respond to this request no later than March 30, 2015. Please let us know if you cannot provide the information by this date. If you can provide partial responses sooner, please do so for the sake of continuing our work. Delays in responding to these data needs will continue to result in associated delays in preparation of the EIR.

The Energy Division reserves the right to request additional information at any point in the application proceeding and during subsequent construction of the Project should SDG&E's CPCN be approved.

Please direct questions related to this application to me at (415) 703-2068 or [Billie.Blanchard@cpuc.ca.gov](mailto:Billie.Blanchard@cpuc.ca.gov).

Sincerely,

A handwritten signature in cursive script that reads "Billie Blanchard".

Billie Blanchard  
Project Manager  
Energy Division, CEQA Unit

cc: Mary Jo Borak, Supervisor  
Molly Sterkel, Program Manager  
Nicholas Sher, CPUC Attorney  
Jeff Thomas, Project Manager, Panorama Environmental

**PUBLIC UTILITIES COMMISSION**

505 VAN NESS AVENUE  
SAN FRANCISCO, CA 94102-3298



Susanne Heim, Deputy Project Manager, Panorama Environmental  
Darryl Gruen, Attorney for ORA  
Chris Myers, ORA  
Alan Colton, SDG&E Director - Major Projects

**REQUEST FOR ADDITIONAL DATA:  
DATA NEEDS #9 FOR THE SYCAMORE-PEÑASQUITOS  
230-KILOVOLT TRANSMISSION LINE PROJECT  
APPLICATION (A. 14-04-011)**

---

**REPORT OVERVIEW**

The California Public Utilities Commission (CPUC) has identified additional areas where more information is needed to prepare a complete and adequate analysis of the potential environmental effects of the Proposed Project in accordance with the requirements of the California Environmental Quality Act (CEQA). Data needs are identified in bold. Clarifying information is provided below the data need.

**Table 1: Application No. 14-04-011 Data Needs #7**

#	Reference Source, Page #	Data Need
1	N/A	<p><b>Provide a more detailed description supporting determination of low potential and high potential for buried cultural resources in the project area.</b></p> <p>The assessment of high or low potential for buried cultural resources provided to the CPUC needs to be supported by more detailed descriptions of the geology/ geomorphology, seismic history, hydrology, topography, and soils in the project than is currently provided in Petra Resource Management’s April 2014 report which states:</p> <p style="padding-left: 40px;">“Evidence for buried cultural deposits was opportunistically sought through the inspection of natural or artificial erosional exposures and the spoils from rodent burrows. In the daily survey notes, the field director assessed the potential for buried sites on the basis of subregional geomorphology. For instance, the potential would be rated as high in large alluvial valleys and as low in areas with shallow bedrock. Maps showing the APE study area, previous and current survey areas and potential for buried deposit analysis are provided in Appendix A.”</p>
2	Data Request #7, Response #9; and Data Request #5, Response #5	<p><b>Provide a wetlands delineation report covering the proposed SR-56 staging yard and the Encina Hub work areas.</b></p> <p>The potential exists for wetland resources to occur within or adjacent to the SR-56 staging yard and the Encina Hub work areas; however, these locations were not covered in previous wetland delineation reporting provided by SDG&amp;E. These areas need to be included in the wetland delineation currently underway for the Black Mountain Ranch Community Park and Evergreen Nursery staging yards identified in SDG&amp;E’s focused survey</p>

**Table 1: Application No. 14-04-011 Data Needs #7**

#	Reference Source, Page #	Data Need
		<p>schedule response to Data Request #7.</p> <p>The wetland delineation must include both the technical report and associated GIS shapefiles.</p>
3	Data Request #7, Response #9; and Data Request #5, Response #5	<p><b>Provide the results of rare plant surveys covering the proposed Mission-San Luis Rey Phase Transposition, Chicarita South staging yard, SR-56 staging yard, and Encina Hub work areas.</b></p> <p>The potential exists for rare plants to occur within or adjacent to the work areas identified above; however, these locations were not covered in previous rare plant survey reports provided by SDG&amp;E. These areas need to be included in the rare plant survey work currently underway for the Black Mountain Ranch Community Park and Evergreen Nursery staging yards identified in SDG&amp;E's focused survey schedule response to Data Request #7.</p> <p>The rare plant surveys results must include both the technical report and associated GIS shapefiles.</p>
4	Data Request #7, Response #2	<p><b>Provide a technical memo documenting the burrowing owl habitat assessment methodology and results for the Evergreen Nursery staging yard, the Black Mountain Ranch Community Park staging yard, and the Encina Hub work area. SDG&amp;E provided burrowing owl GIS data in response to Data Request #7 with no accompanying technical assessment.</b></p> <p>In the assessment, explain why there is a polygon of unlabeled area surrounded by labeled burrowing owl suitable habitat at the Black Mountain Ranch Community Park between potential habitat areas 15 and 16. Based on aerial imagery, this polygon appears to also be suitable habitat. Refer to Attachment A for the specific location in question.</p>
5	Data Request #7, Response #4	<p><b>Verify that unmitigated PM10 emissions in 2016 will be above the SCAQMD threshold.</b></p>
6	N/A	<p><b>Provide supporting biological and cultural survey documentation for the proposed Camino Del Sur staging yard that SDG&amp;E would like included in the EIR.</b></p>

# **Attachment A**

**Data Request #9, Item 4**

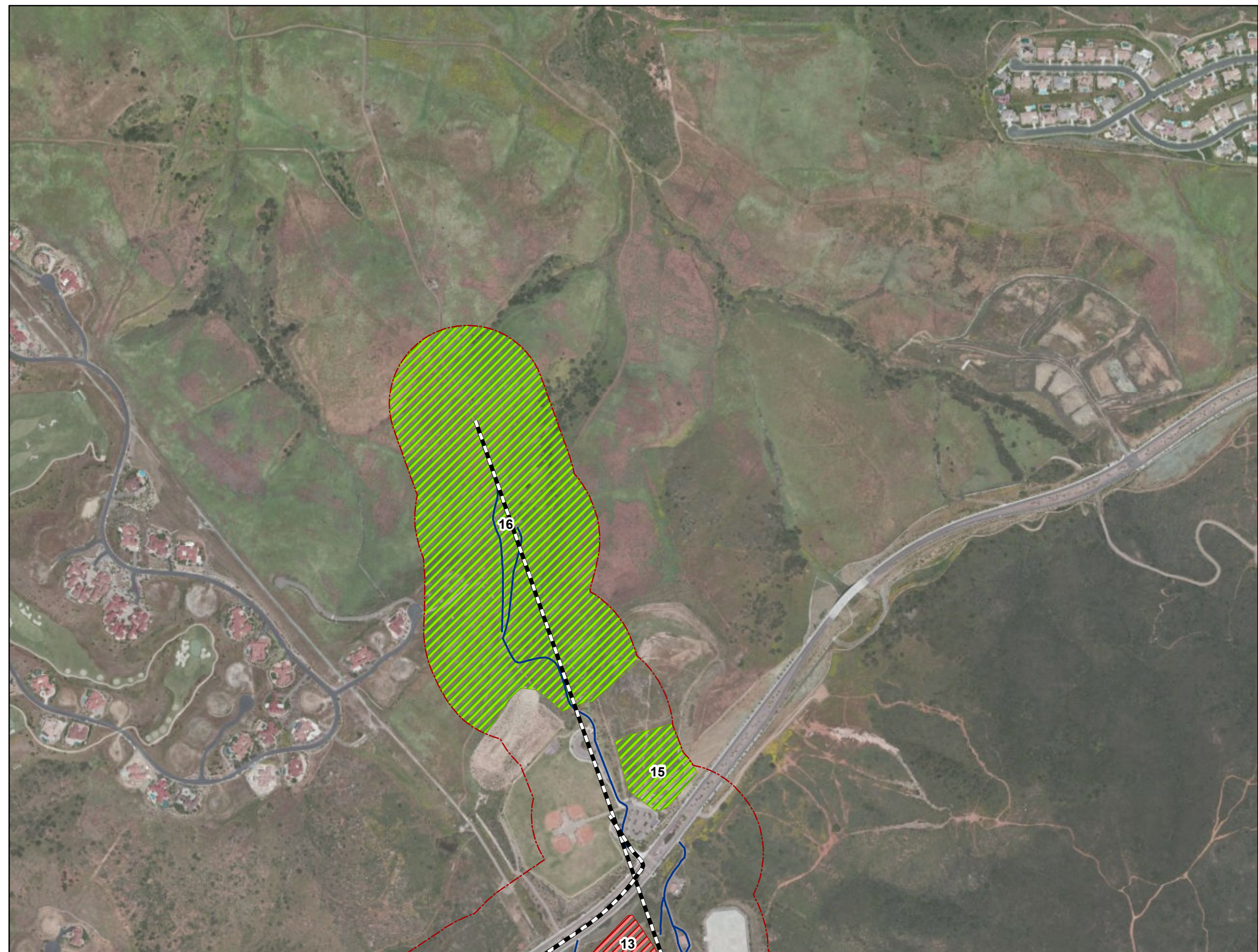
**Burrowing Owl Suitable Habitat Maps**







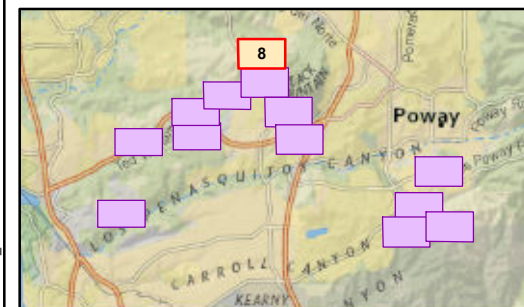
**Sycamore to Peñasquitos  
230 kV Transmission Line Project**

**Burrowing Owl Habitat  
Assessment Results**

**Figure 4**



-  Project Alignment
-  Project Access Roads
-  Project Footprint 500ft Buffer
- Potential for Occurrence**
-  Not Expected to Occur
-  Potential to Occur

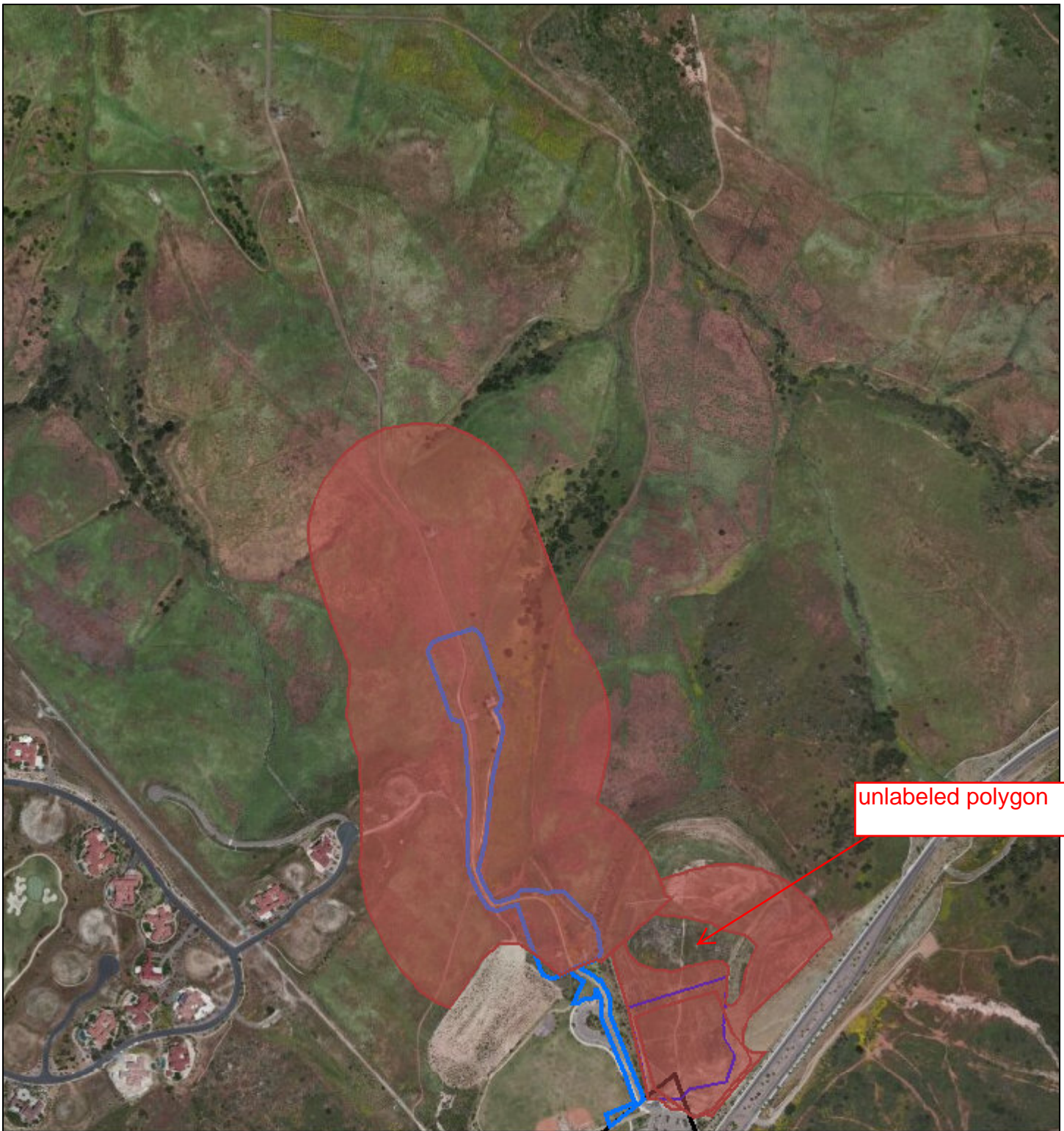


Source: CA Dept Fish and Wildlife, CNDDB Nov2014, SanBIOS, Nov 2014; Source: Esri, DigitalGlobe, GeoEye, i-cubed, Earthstar Geographics, CNES/Airbus DS, USDA, USGS, AEX, Getmapping, Aerogrid, IGN, IGP, swisstopo, and the GIS User Community. Content may not reflect National Geographic's current map policy.

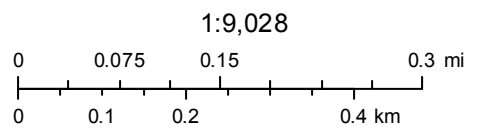
G:\SDGE\_SX2PQandTL6861SIDGE\_SumriseSX2PQ\MXD\SX2PQ BUOWSHabitat\BurrowingOwlHabitatResults.mxd



# PEI\_01 - Vegetation Check



March 5, 2015



Source: Esri, DigitalGlobe, GeoEye, Earthstar Geographics, CNES/Airbus DS, USDA, USGS, AEX, Getmapping, Aerogrid, IGN, IGP, swisstopo, and the GIS User Community  
Esri, HERE, DeLorme, TomTom, MapmyIndia, © OpenStreetMap contributors, and the GIS user community