



Jan. 30, 2009

California **Solar** Initiative Public Forum Hosted by SCE



California **Solar** Initiative

Welcome

Bob Botkin, SCE



California **Solar** Initiative

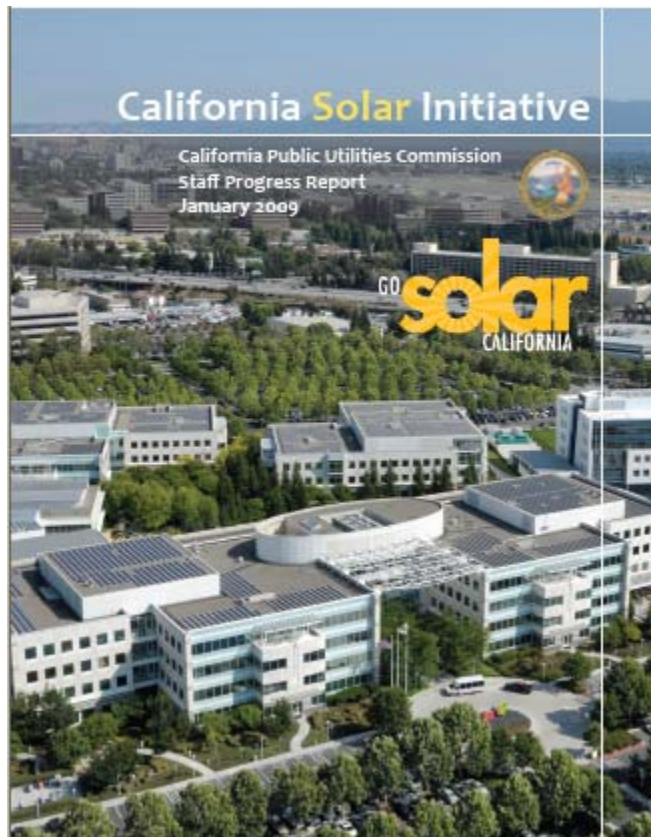
CSI Program Statistics

Molly Sterkel, CPUC



California Solar Initiative

California Doubled Installations in 2008



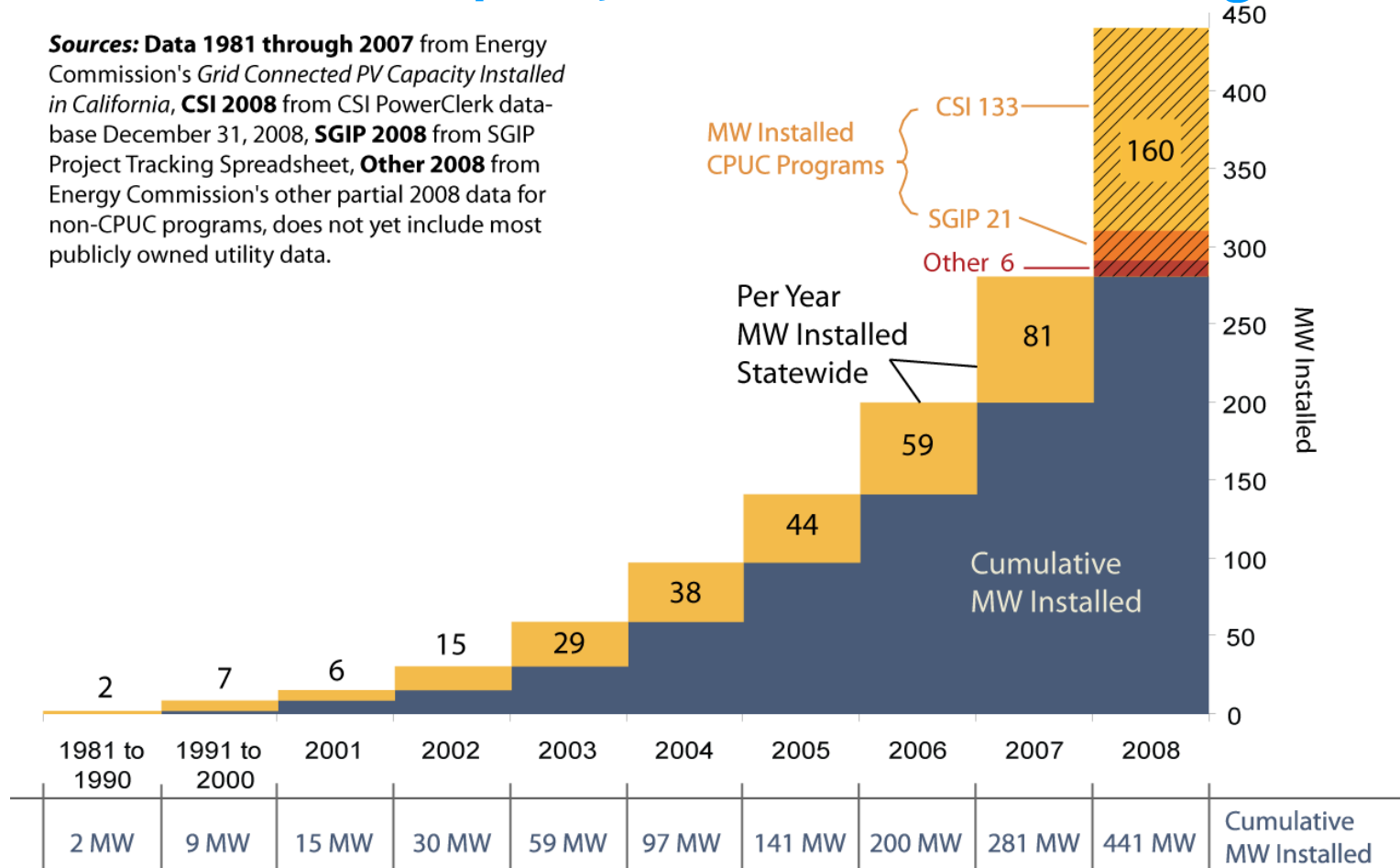
- 2008 installations doubled to 158 MW (from 78 MW in 2007) in investor-owned utility territories
- December 2008 was highest month (# of applications); 4Q08 was highest quarter
- CSI program represents \$5 billion in solar investments in CA
- Program has 18,290 applications, and 11,810 are completed
- Program has 322 MW of applications, and 152 MW came online in 2007-2008.



California Solar Initiative

Grid Installed PV Capacity in California, 1981 through 2008

Sources: Data 1981 through 2007 from Energy Commission's *Grid Connected PV Capacity Installed in California*, **CSI 2008** from CSI PowerClerk database December 31, 2008, **SGIP 2008** from SGIP Project Tracking Spreadsheet, **Other 2008** from Energy Commission's other partial 2008 data for non-CPUC programs, does not yet include most publicly owned utility data.



California Solar Initiative

Statewide Solar Data

Table 1. Grid Installed PV Capacity in California, 1981 through 2008

Solar Programs	1981 – 2006, total	2007	2008
California Solar Initiative (CSI)	0 MW	19 MW	133 MW
Self-Generation Incentive Program (SGIP)	80 MW	33 MW	21 MW
New Solar Homes Partnership (NSHP)	0 MW	0 MW	1.4 MW
Emerging Renewables Program (ERP)	91 MW	26 MW	3.0 MW
Investor-Owned Utility territory subtotal	172 MW	78 MW	158 MW
Publicly-Owned Utilities (POUs)	27 MW	3 MW	*1.5 MW
Non-IOU territory subtotal	27 MW	3 MW	1.5 MW
Statewide Total	198 MW	81 MW	160 MW

Sources: See notes for Figure 1. * POU data for 2008 is incomplete.



California Solar Initiative

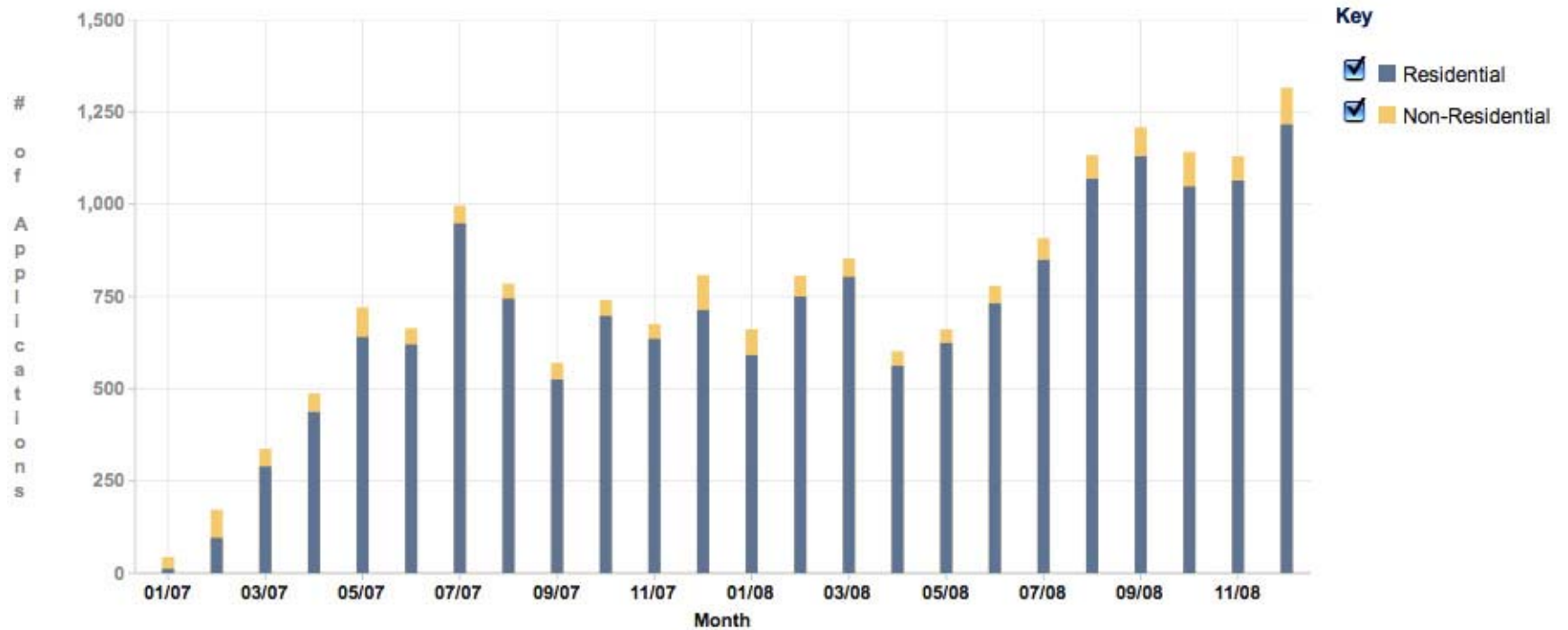
All CSI Projects, January 2007-December 2008

		All CSI Projects		Total
		CSI	CSI-SGIP Transition Projects	
Pending Projects	Applications	6,389	24	6,413
	<i>MW</i>	<i>160 MW</i>	<i>9 MW</i>	<i>169 MW</i>
	Incentive \$million	\$365	\$23	\$388
Installed Projects	Applications	11,810	67	11,877
	<i>MW</i>	<i>138 MW</i>	<i>14 MW</i>	<i>152 MW</i>
	Incentive \$million	\$352	\$35	\$387
Total	Applications	18,199	91	18,290
	MW	298 MW	24 MW	322 MW
	Incentive \$million	\$717	\$57	\$775



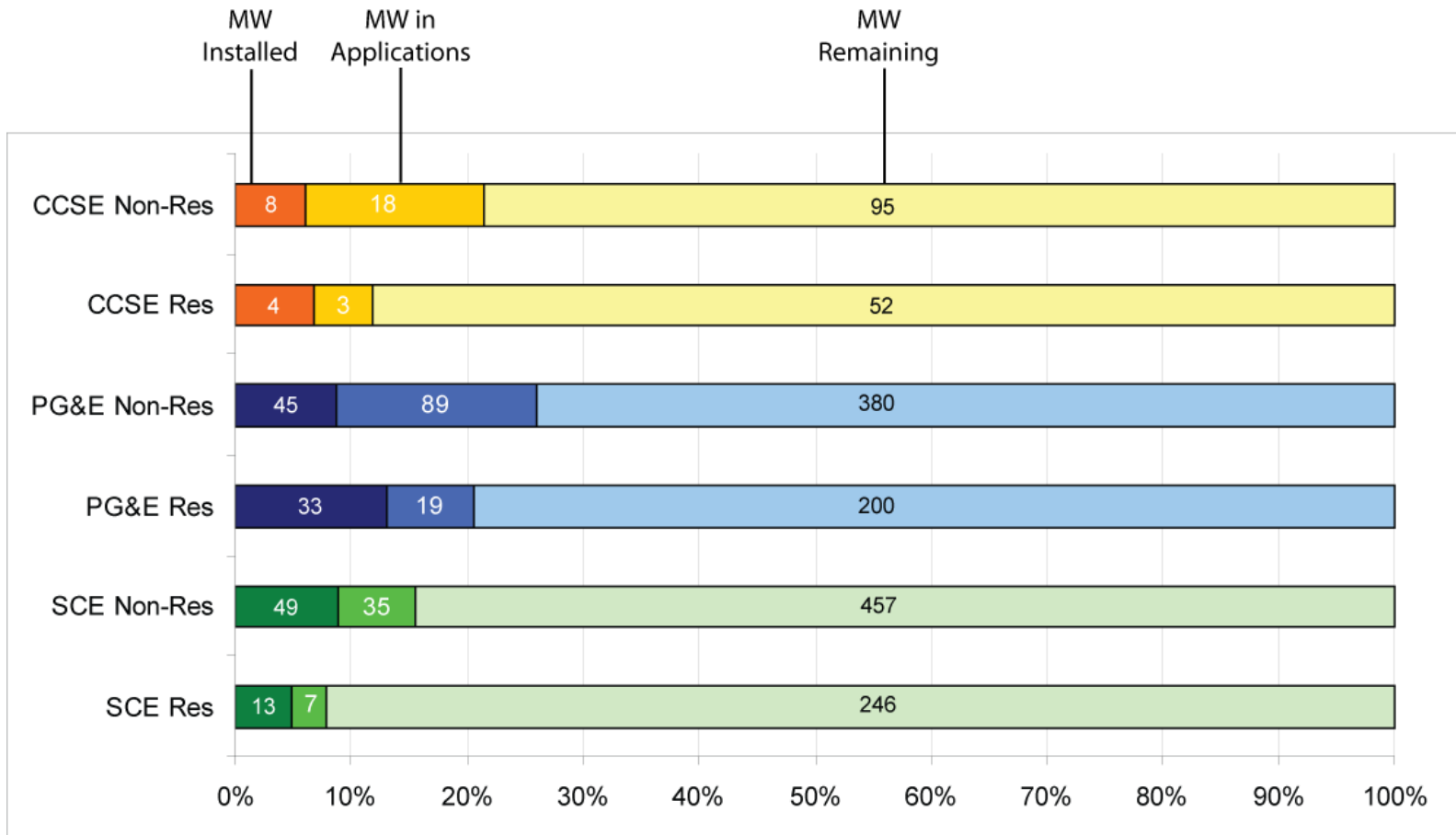
California Solar Initiative

Total Number of Applications per Month by Customer Sector, January 2007-December 2008



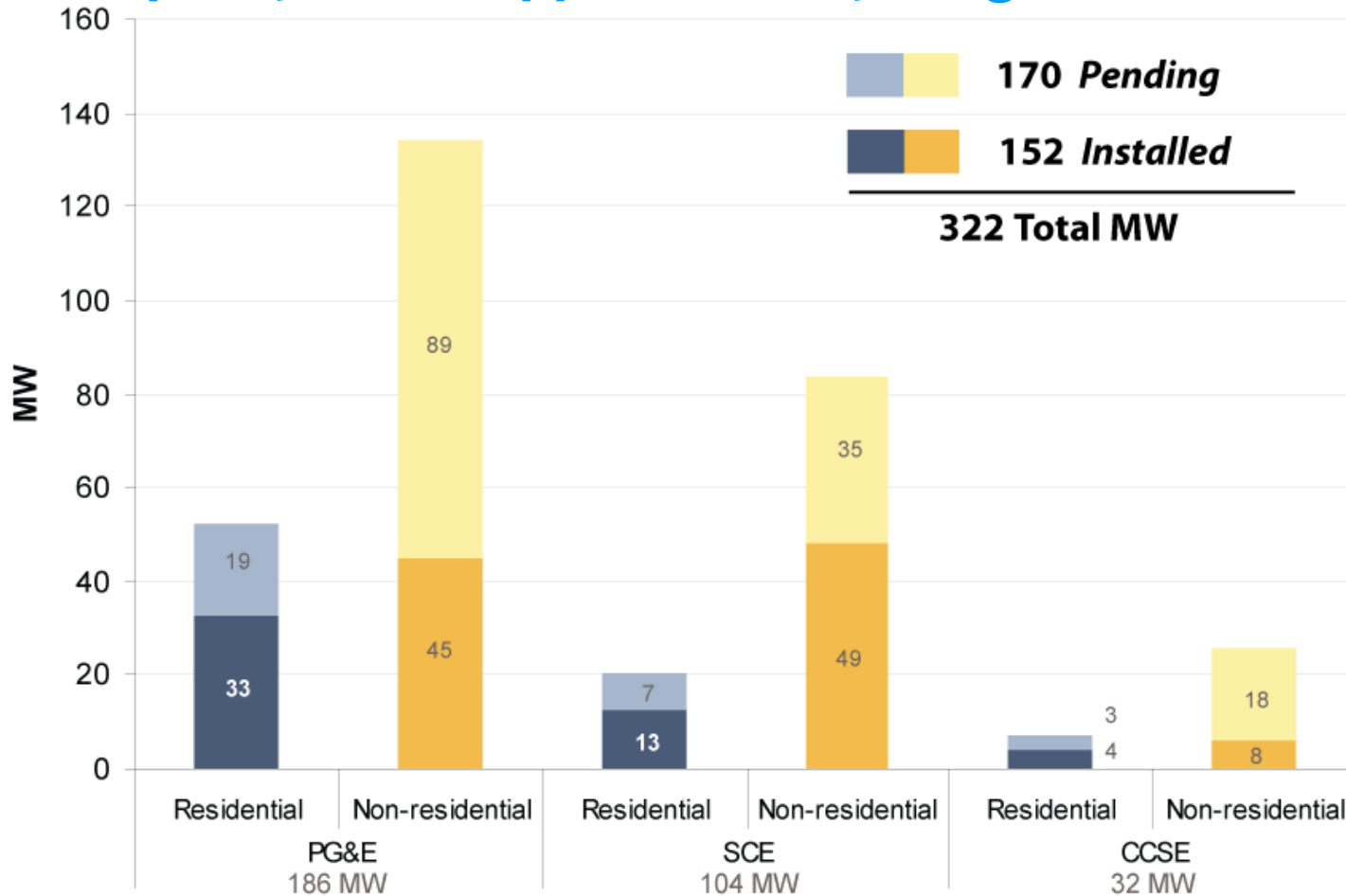
California Solar Initiative

CSI Progress Toward 1,750 MW Goal



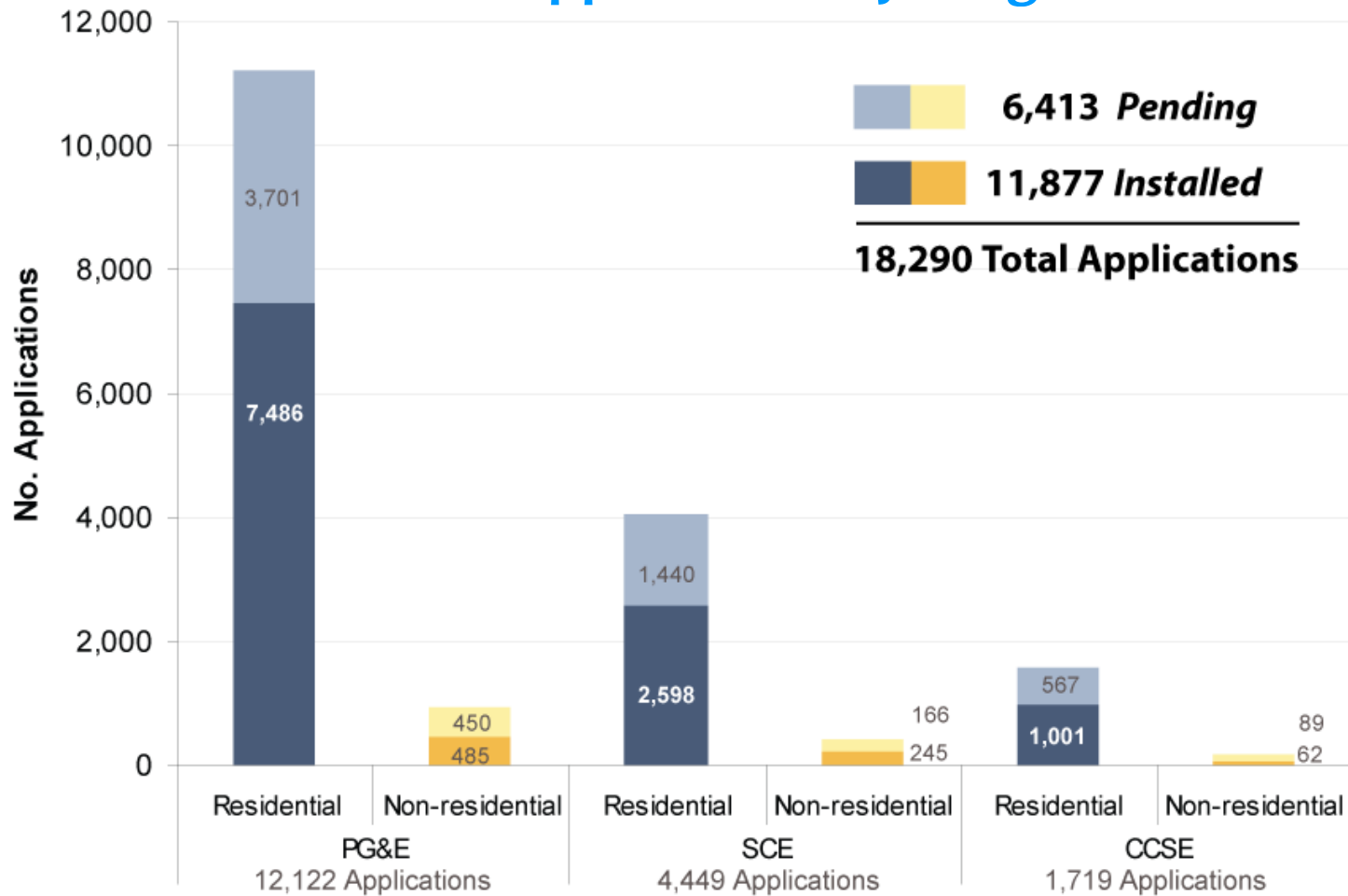
California Solar Initiative

Total Capacity of CSI Applications by Program Administrator



California Solar Initiative

Total Number of CSI Applications by Program Administrator



California Solar Initiative

Historical CSI Program Demand as Measured by Cumulative Application Capacity

	September 2007	April 2008	December 2008
Residential			
PG&E	15 MW	29 MW	52 MW
SCE	5 MW	10 MW	21 MW
CCSE	2 MW	3 MW	7 MW
Non-Residential			
PG&E	85 MW	110 MW	134 MW
SCE	75 MW	102 MW	84 MW
CCSE	18 MW	20 MW	26 MW



California Solar Initiative

CSI Incentive Payments and Total Solar Project Costs

(all figures in \$millions)	Residential		Non-Residential		Total CSI Applications	
	\$ CSI Incentives	\$ Total Project Costs	\$ CSI Incentives	\$ Total Project Costs	\$ CSI Incentives	\$ Total Project Costs
Pending Projects						
PG&E	\$33.2	\$163.0	\$195.5	\$3,230.0	\$228.7	\$3,393.0
SCE	\$16.6	\$74.1	\$87.8	\$282.6	\$104.4	\$356.7
CCSE	\$5.7	\$25.2	\$49.1	\$154.8	\$54.8	\$180.0
Subtotal, Pending	\$55.5	\$262.4	\$332.4	\$3,667.0	\$387.8	\$3,929.0
Installed Projects						
PG&E	\$70.1	\$317.6	\$114.2	\$331.6	\$184.4	\$649.2
SCE	\$30.5	\$119.9	\$138.7	\$354.0	\$169.2	\$473.8
CCSE	\$10.0	\$39.8	\$23.2	\$52.8	\$33.2	\$92.6
Subtotal, Pending	\$110.6	\$477.2	\$276.2	\$738.4	\$386.7	\$1,216.0
Total, All Projects	\$166.0	\$739.6	\$608.5	\$4,405.0	\$774.5	\$5,145.0



California Solar Initiative

Net Energy Metering (NEM) Data

Table 9. Net Energy Metering (NEM) participation to date, by utility service territory

	PG&E	SCE	CCSE/SDG&E
Total NEM Customer-Generators	27,225 customers	9,088 customers	5,933 customers
Total NEM SOLAR Customer-Generators	27,156 customers	8,894 customers	5,907 customers
Total rated generating capacity of all NEM customer-generators (MW)	265 MW	123 MW	49 MW
Total rated generating capacity of all NEM SOLAR customer-generators (MW)	264 MW	114 MW	48 MW
Percentage of "aggregate customer peak demand" accounted for by all NEM customers	1.27%	0.51%	0.59%

Source: CPUC Data Request to the Program Administrators, dated December 16, 2008. Data current as of December 31, 2008.



California Solar Initiative

CSI Program Dropouts

Estimated overall dropout rate of 15% (MW and incentive \$)

- Based on percentage of projects that have been canceled or withdrawn out of all projects that have ever been granted a reservation
- About 10% of MW & incentive \$ can be attributed to projects that are over time – though nearly all these projects have been granted extensions

About \$35.2 million in “unreserved” incentives from dropouts

- This is sum of all incentive \$ unreserved when a project drops out and the associated MW are re-reserved at a lower incentive step

See CPUC January 2009 Staff Progress Report Data Annex for more detailed information



California **Solar** Initiative

CSI Program Updates

Molly Sterkel, CPUC



California **Solar** Initiative

Program Updates

- Single-Family Affordable Solar Housing (SASH)
- CSI Research Development & Demonstration (RD&D) Program
- Solar Water Heating Pilot Program (SWHPP)
- CSI Program Evaluation Update



California **Solar** Initiative

Single-Family Affordable Solar Housing (SASH)



GRID Alternatives, a solar non-profit, is the Program Manager

- Contract was finalized in December 2008

GRID has completed an initial Program Implementation Plan

- Developing clear statement of eligibility requirements consistent with state law (Public Utilities Code Section 2852)

GRID will release SASH-specific edits to the CSI Program Handbook for public review

- Please look for these proposed changes in the very near future & provide your feedback



California Solar Initiative

CSI Research Development & Demonstration (RD&D) Program

- RD&D Program has a \$50 million budget for grant-making, administration and evaluation
- CSI RD&D is a portfolio-based grant-making program that focuses on overcoming technological barriers to the widespread adoption of solar distributed generation
- RD&D Program progress to-date and timeline:
 - **August 2008:** Itron selected as RD&D Program Manager
 - **November 2008:** Contract finalized; CPUC and Itron met for kick-off of RD&D Program Manager contract
 - **December 2008:** Draft grant agreement submitted to U.C. Berkeley for Helios Project
 - **First Quarter 2009 Target:**
 - Finalize RD&D grant-making road-map (*Q1 of 2008*)
 - Stakeholder meeting (*Q1/Q2 of 2009*)
 - First RD&D grant RFP released (*Q3/Q4 of 2009*)



California Solar Initiative

Solar Water Heating Pilot Program (SWHPP)

- CCSE recently issued SWHPP Interim Evaluation Report, which was prepared by Itron, Inc.
- The evaluation will serve to inform the CPUC in the development of a program under Assembly Bill 1470 (AB 1470)
- Report findings include:
 - A number of barriers must be overcome to enable widespread adoption of SWH systems, including permitting processes and cost, initial system cost, lack of customer awareness of the technology and benefits, and a shortage of experienced installers.
 - The SWHPP has been relatively effective at increasing adoption of SWH systems by customers with natural gas water heaters.
 - Current California solar water heater owners tend to be conservative users of energy and water; therefore, expanded adoption of the technology is likely to produce greater savings and cost effectiveness within the remaining population of high-use consumers.



California Solar Initiative

SWHPP Progress to Date

- Since July 2007, the SWHPP has received 179 incentive applications
- As a result of changes to the SWHPP Program rules, new residential construction SWH projects are eligible for incentives. In the last six months, the SWHPP has received 13 of these project applications
- 102 SWH systems have been installed through the SWHPP, representing \$146,381 in incentive payments

RETROFIT		NEW CONSTRUCTION	
Retrofit Total		New Construction Total	
Incentives Reserved	\$206,091	Incentives Reserved	\$14,750
Incentives Paid	\$146,381	Incentives Paid	\$6,450
Number of Systems	152	Number of Systems	11
Pending Applications	12	Pending Applications	2
Cancelled Applications	2	Cancelled Applications	0

TOTAL	
Total Reservations/Payments	
Incentives Reserved	\$220,841
Incentives Paid	\$152,831
Number of Approved Systems	163
Pending Applications	14
Cancelled Applications	2
TOTAL Applications	179

Total Payments		2007	2008	2009 to Date	TOTAL			
Retrofit								
Prescriptive Area	6	\$7,153	84	\$105,328	0	\$0	90	\$112,481
	0	\$0	12	\$33,900	0	\$0	12	\$33,900
New Construction								
Prescriptive Area	0	\$0	0	\$0	0	\$0	0	\$0
	0	\$0	0	\$0	0	\$0	0	\$0
TOTAL	6	\$7,153	96	\$139,228	0	\$0	102	\$146,381

Source: CCSE monthly progress report, 12/08



California Solar Initiative

CSI Program Evaluation Update

- **July 29, 2008:** CPUC Assigned Commissioner Ruling established the Program Evaluation Plan for the CSI
 - Budget: \$46.7 million
 - Goals:
 - Utilize a standardized process for evaluating programs and reporting results
 - Provide credible and objective information on program impacts and performance
 - Provide policy and program related information to ensure achievement of CSI program goals
 - Produce an accurate assessment of future opportunities to further goals of SB 1
- Low income and RD&D programs not included in the Plan



California Solar Initiative

Four RFPs Have Been Issued for Evaluation Studies

- RFPs released in November and December
- Proposals received in December and January
- All RFPs available for download at:
www.cpuc.ca.gov/PUC/energy/Solar/evaluation.htm
- Status of RFPs
 - **Impact Evaluation** – Itron was chosen as contractor
 - **Project Coordinator** – CPUC is currently considering proposals
 - **Process Evaluation** – CPUC is currently considering proposals
 - **Cost-Effectiveness Evaluation** – CPUC is currently considering proposals



California **Solar** Initiative

CSI Program Handbook Updates

Andrew Yip, PG&E



California **Solar** Initiative

CSI Program Handbook Updates

- Application Fee Standardization
- System Warranty
- Metering: PDP Qualifications
- Site Transfer
- Adding Systems
- New RR & ICF Forms



California Solar Initiative

Application Fee Standardization

- Simplified Application Fee requirement for non-residential applications greater than 10 kW ...

kW \geq		kW $<$		FEE
10	-	50	=	\$1,250
50	-	100	=	\$2,500
100	-	250	=	\$5,000
250	-	500	=	\$10,000
500	-	1,000	=	\$20,000

- Easy to understand and send with application

CSI HB Section 4.2.5



California **Solar** Initiative

System Warranty

- Removal of requirement for warranty language in installation contract
- Added section in Incentive Claim Form for System Owner acknowledgement
- Simplification of process and reduce paper

CSI HB Section 2.4



California Solar Initiative

System Warranty Language

- The fine print ...

Program Warranty

The undersigned declares that the system includes a minimum 10-year warranty provided in combination by the manufacturer and installer to protect the purchaser against defective workmanship, system or component breakdown, or degradation in electrical output of more than fifteen percent from their originally rated electrical output during the ten-year period. The warranty must cover the solar generating system only, including PV modules (panels) and inverters, solar collectors, tracking mechanisms, heat exchangers, pumps, heat driven cooling systems associated with the solar system and provide for no-cost repair or replacement of the system or system components, including any associated labor during the warranty period.

For self-installed systems, the undersigned declares that the system includes a minimum 10-year warranty on the equipment to be installed to protect the purchaser against breakdown or electrical output degradation of major system components. In this case, the warranty need not cover the labor costs associated with removing or replacing major components because any repairs would be done by the self-installer or at the self-installer's expense.

Additionally, meters must have a one-year warranty to protect against defective workmanship, system or component breakdown, or degradation in electrical output of more than fifteen percent from their originally rated electrical output during the warranty period. For meters that are integrated into the inverter, the meter warranty period must be 10 years.

System Owner (if not Host Customer) Initial:

Date:

CSI HB Section 2.4



California Solar Initiative

Metering: PDP Qualifications

- Finalized PDP requirements and data transfer protocols for PBI payments
 - Defines PDP vs. System Owner responsibilities
 - PDP eligibility requirements
 - Data validation requirements
 - PDP non-performance procedures

CSI HB Section 17



California Solar Initiative

Site Transfer

- On 12/18/08, Resolution E-4197 allowed customers to transfer their CSI reservation from one site to another with some conditions
 - Requests granted only to active and new applications
 - Active applications must still be within their project timeline (with or w/o extensions)
 - New applications (after the date of the Resolution) must be within 180 days of initial reservation
 - Applicants must demonstrate to their PAs that a non-negligible amount of money was spent and show why the first site was not a viable site for a solar project
 - Reasons must be beyond the control of the solar customer
 - Applicants must document and demonstrate to their PAs that the second site is viable
 - Once a transfer is confirmed, project timeline resets depending on project class
 - Reservations may only be transferred once within the same utility territory
 - Any excess capacity at second site is eligible for the current incentive step
 - Application fee is non-refundable if second site cancels



California **Solar** Initiative

Adding Systems

- New panels added to an existing inverter are eligible for CSI Incentives with some conditions
 - Inverter must already be in service and have met the Program requirements at the time of installation
 - Inverter was partially funded by the PAs in accordance with SB1 (CSI or NSHP)
 - Conforms with the SB1 guidelines

CSI HB Section 2.2.1



California **Solar** Initiative

Updated RR and ICF Forms

PowerClerk

PG&E: <https://pge.powerclerk.com/>

SCE: <https://sce.powerclerk.com/>

CCSE: <https://ccse.powerclerk.com/>

Excel Forms

PG&E: www.pge.com/csi

SCE: www.sce.com/RebatesandSavings/CaliforniaSolarInitiative/

CCSE: www.energycenter.org/

Use updated forms by **March 1, 2009**, or
applications will be rejected



California **Solar** Initiative

MASH Update

Caitlin Henig, PG&E



California **Solar** Initiative

Multifamily Affordable Solar Housing (MASH) Update: Program Goals

- **Stimulate adoption of solar power** in the affordable housing sector
- **Improve energy utilization** and overall quality of affordable housing through application of solar and energy efficiency technologies
- **Decrease electricity use and costs** without increasing monthly household expenses for affordable housing building occupants
- **Increase awareness and appreciation** of the benefits of solar among affordable housing occupants and developers



California Solar Initiative

MASH Program Overview

- Statewide budget: \$108.34M (5% of the CSI budget)
- EPBB incentives are not subject to MW triggers
- Three Incentive Levels:
 - Track 1a: \$3.30/Watt for common load offset
 - Track 1b: \$4.00/Watt for tenant load offset
 - Track 2: \$/Watt varies
 - Competitive grant-style format for projects that provide a direct tenant benefit
- MASH participants may allocate credits from one solar system across multiple accounts through a Virtual Net Energy Metering (VNEM) tariff once it becomes available



California **Solar** Initiative

MASH Program Eligibility

- Existing multifamily affordable housing must meet the definition of low-income residential housing established in Pub. Util. Code 2852.a.2¹
- Must have an occupancy permit for at least two years prior to applying for MASH incentives

¹Multifamily housing financed with low-income housing tax credits, tax-exempt mortgage revenue bonds, general obligation bonds, or local, state or federal loans and grants and meets definition of Health and Safety Code Section 50079.5 OR

A residential complex in which at least 20% of total units are sold or rented to lower income households as defined in Health and Safety Code Section 50079.5 and housing units targeted for lower income households are subject to deed restriction or affordability covenant ... for at least 30 years



California **Solar** Initiative

MASH Progress to Date

- **Oct. 16, 2008:** CPUC issued Decision 08-10-036 to create MASH within the CSI Program
- **Dec. 15, 2008:** CCSE filed a joint advice letter on behalf of the Program Administrators to incorporate Track 1 application process into the CSI Handbook
- **Jan. 8, 2009:** CPUC held a public workshop to discuss VNEM
- **Jan. 14, 2009:** PG&E filed a joint advice letter on behalf of the Program Administrators to incorporate Track 2 application process into the CSI Handbook



California **Solar** Initiative

MASH Timeline

- **Feb. 13, 2009:** Investor-owned utilities (IOUs) must file a VNEM tariff. Implementation will be independent from MASH launch, but may be as early as March 15, 2009.
- **First Quarter 2009:** Expected Track 1 Launch
- **Second/Third Quarter 2009:** Expected Track 2 Launch



California Solar Initiative

MASH FAQs

- Q: What is the status of VNEM?
- Q: If our multifamily affordable building is master metered, do I have to switch to individual meters?
- Q: If I have an existing CSI application for common load, can I transfer it to MASH Track 1a?
- Q: What if my project does not have an occupancy permit of two years? (e.g., major rehab)



California **Solar** Initiative

Site Definition

John Supp, CCSE



California Solar Initiative

Current Definition

- The Host Customer's premises, consisting of all the real property and apparatus employed in a single enterprise on an integral parcel of land undivided,

excepting in the case of industrial, agricultural, oil field, resort enterprises, and public or quasi-public institutions divided by a dedicated street, highway or other public thoroughfare or railway.

Automobile parking lots constituting a part of and adjacent to a single enterprise may be separated by an alley from the remainder of the premises served.

Separate business enterprises or homes on single parcel of land undivided by a highway, public road, and thoroughfare or railroad would be considered for purposes of CSI as separate Sites.

Each individual Site must be able to substantiate sufficient electrical load to support the proposed system size.



California Solar Initiative

Other – private entity, etc.

Freeway

Public Road



4 Sites = 4 MW total for this entity



California Solar Initiative

Public, Quasi Public,
Industrial, Etc.

Freeway



1 Site = 1 MW total for entire campus



California Solar Initiative

Bill from Customer X

LONG FORM BILLING NO.		DEPARTMENT	TYPE OF SERVICE	SAN DIEGO GAS & ELECTRIC		THIS BILL DUE AND PAYABLE UPON PRESENTATION		Page					
7630485118 7 07		CY 10-22	Electric	P.O. BOX 25110		Date Past Due: Mar 31 2007		20					
CONTRACT NO.		LOCATION	FROM	SANTA ANA, CA 92799-5110		CHECKS MAY BE MADE PAYABLE TO "S.D.G.A.E."							
UCSD AUXILIARY & PLANT SERV 9500 GILMAN DR 908 LA JOLLA CA 92033-0908		APS ENERGY SVCS		DATE MAILED Mar 15 2007									
ACCOUNT NUMBER	SERVICE ADDRESS	METER NUMBER	ITEM NUMBER	RATE	METER READINGS		METER CONSTANT	CONSUMPTION IN THERMS, KWHL, #	NO. OF UNITS	SERVICE CHARGE	BILLING BASIS	FFD OR UUT #	CURRENT AMOUNT
					PRESENT	PREVIOUS							
3801137649	4030 OLD MIRAMAR RD												
	Read Dates: 12/31 - 01/31	09001606		ALTOU	0	0	21000	3310524					122401.89
	Winter	Off		887565 kWh @ .00926						8218.85			
		On		390264 kWh @ .00976						3808.98			
		Semi		2032495 kWh @ .00943						19168.31			
	Non-Coincident Demand			8,027.0 kW x \$3.760000						30181.52			
	Winter On-Peak Demand			18,228.0 kW x \$.050000						911.40			
	Standby Demand			27,900.0 kW x \$1.900000						53010.00			
	TOU Customer Charge									282.31			
	Electric Energy Charge												
	On Peak			390,264 kWh x \$.14411						56240.95			
	Semi Peak			2,032,695 kWh x \$.08510						172982.34			
	Off Peak			887,565 kWh x \$.05964						52934.38			
	Electric Energy Charge Credit									282157.67-			
	Utility Service Credit									243.95-			
	City of San Diego Franchise Fee Differential			5.78% Electric						6667.21			
	State Regulatory Fee			.00012/kWh						397.26			
	Read Dates: 01/31 - 02/28	09001606		ALTOU	0	0	21000	23991					119156.01
	Winter	Off		554232 kWh @ .00926						5132.19			
		On		303156 kWh @ .00976						2958.80			
		Semi		1542534 kWh @ .00943						14546.10			
	Non-Coincident Demand			9,500.0 kW x \$3.760000						35720.00			
	Winter On-Peak Demand			18,060.0 kW x \$.050000						903.00			
	Standby Demand			27,900.0 kW x \$1.900000						53010.00			
	TOU Customer Charge									282.31			
	Electric Energy Charge												
	On Peak			303,156 kWh x \$.14411						43687.81			
	Semi Peak			1,542,534 kWh x \$.08510						131269.64			
	Off Peak			554,232 kWh x \$.05964						33054.40			
	Electric Energy Charge Credit									208011.85-			
	Utility Service Credit									180.20-			
	City of San Diego Franchise Fee Differential			5.78% Electric						6495.82			

\$122,401 per month

† THERMS = DIFFERENCE IN GAS METER READINGS TIMES THERM MULTIPLIER ‡ FFD = FRANCHISE FEE DIFFERENTIAL, UUT = UTILITY USER'S TAX



California Solar Initiative

System Size

- Divide annual kWh by 1,850 kWh per AC kW to get estimated system size.
- $39,726,288 \text{ kWh per year} / 1,850 \text{ kWh per AC kW} = 21,500 \text{ kW} = 21 \text{ MW AC system}$
- This is all on one meter



California Solar Initiative

Current Definition

- Pros
 - + Application of definition is simple
- Cons
 - Considers large sites as single sites
 - Camp Pendleton (~100 miles²) = 1 site. UCSD = 1 site.



California Solar Initiative

Proposed Changes

- 1) Define max system size as max per meter. Eliminate site question altogether.
- 2) Make exceptions for certain large installations – Universities, Military, etc.
- 3) Both 1& 2 – remove site definition. Replace with system size per meter. Add ability to make exceptions for customers adversely affected by 1 MW cap per meter.
- 4) Allow site definition to stay, but sites may justify 1 MW of PV per 5 MW of load



California **Solar** Initiative

Option 1 – per Meter

- Change the 1 MW cap to apply per meter
- Pros
 - + Aligns with Net Energy Meter (1MW cap per meter)
 - + Supports majority of large sites
 - + Never more restrictive than current definition
- Cons
 - Doesn't help all large sites (see Option 2)



California Solar Initiative

Option 2

- Make Exceptions
- Pros
 - + Allows large sites not benefited by Option 1 to “right size” their system
- Cons
 - Inconsistent application
 - Without also adopting Option 1, does not alleviate issue with certain customers
 - Potentially allows for larger systems than Option 1 would
 - 5 MW load on one meter is larger than the 1 MW cap allowed by Option 1



California **Solar** Initiative

Option 3

- Do both 1 & 2
- Pros
 - + Allows solutions for all customer types
- Cons
 - Largely work in progress and will require more interaction
 - Difficulty in ensuring applied consistently among all PA territories



California Solar Initiative

Option 4

- Allow sites to justify 1 MW of PV per 5 MW of load
- Pros
 - + Avoids unintended consequences of changing site definition
 - + Enables larger sites to participate proportionally and with limits
- Cons
 - Still restricts large entities from fully participating
 - This can be adjusted later if needed
 - Does not help grow smaller non-residential participation



California **Solar** Initiative

Final Note About Easing Site-Based Limits

- 1,200 MW Non-Res goal for PG&E, SCE & CCSE (currently at 97 MW installed)
- 1 MW cap has uses ... has it run its course?
- A sustainable solar market allows participation from customers who wish to participate (market forces)
- Any increase can be restricted or further increased as needed



California **Solar** Initiative

Q & A Panel

CPUC & Program Administrators



California **Solar** Initiative

Lunch



California **Solar** Initiative

Looking to the Future & Other Discussion Topics

CPUC & Program Administrators



California **Solar** Initiative

Looking to the Future & Other Discussion Topics

AB 2466 — Renewable Energy Credits for Local Governments

Tom Diaz, SCE



California Solar Initiative

AB 2466 Background

- **Assembly Bill 2466** – Signed into law by the Governor on Sept. 28, 2008, and codified as Section 2830 of the Public Utilities Code.
- AB 2466 requires an investor-owned utility (IOU) to file a tariff within 30 days of an eligible customer requesting service as provided under AB 2466.
- The CPUC must approve or modify tariff within 30 days.
- The IOU is no longer required to participate once the statewide capacity of 250 MW is reached or until the IOU reaches its proportionate share of the 250 MW.
- The new law became effective Jan. 1, 2009.



California **Solar** Initiative

Who Does AB 2466 Apply To?

- AB 2466 applies to local governments such as:
 - Cities or counties
 - Special districts
 - School districts
 - Political subdivisions
 - Other local public agencies, if authorized by law to generate electricity
- AB 2466 does not include:
 - The State of California
 - Any agency or department of the State
 - A joint powers authority



California **Solar** Initiative

What Does AB 2466 Do?

- Allows an eligible local government to apply excess renewable power produced from its customer account (“**Generating Account**”) as energy credits against charges for power delivered to one or more of its other accounts (“**Benefiting Accounts.**”)



California **Solar** Initiative

What Type of Power is Eligible Under AB 2466?

- The net power delivered to the grid from a generating facility consisting of generators whose nameplate ratings do not collectively exceed 1 MW.
- The generating facility is located within the geographical boundary of, and is owned, operated or on property under the control of, the customer.
- The generating facility is an eligible renewable resource under the Renewables Portfolio Standard Program (i.e. PU Code §§ 399.11) e.g. The facility uses biomass, solar thermal, photovoltaic, wind, geothermal, fuel cells using renewable fuels, small hydroelectric generation, digester gas, municipal solid waste conversion, landfill gas, ocean wave, ocean thermal or tidal current



California **Solar** Initiative

How Are The Energy Credits Calculated and Applied?

- Both the Generating Account and Benefiting Account(s) must be on a Time-of-Use (TOU) rate.
- Energy credits (known as “**Bill Credits**”) are calculated by multiplying the utility’s TOU generation usage component of the Generating Account by the amount of energy exported to the grid during the corresponding time period.
- The Bill Credits are to be applied to the Generating Accounts and to the Benefiting Account(s) that the customer has selected.
- The Bill Credits are used to offset the TOU generation component costs of the Generating Account and the Benefiting Account(s).



California Solar Initiative

How Are The Energy Credits Calculated and Applied? (cont'd.)

- Remaining Bill Credits are carried over to the following month.
- A 12-month period is established whereby at the end of 12 months, any unused Bill Credits are set to zero and a new 12-month period begins.
- A customer may elect to change the Benefiting Account(s) entitled to receive Bill Credits within a 12-month period with at least 60 days notice to utility.



California Solar Initiative

Miscellaneous Tariff Provisions

- Bill credits apply only to generation usage components of the Benefiting Account(s).
- Both the Benefiting Account(s) and Generating Account must be located within the geographical boundaries of the customer of the serving utility.
- Sufficient metering must be in place to identify eligible net generation delivered into grid.
- Costs associated with the metering requirements for both types of accounts are the responsibility of the customer.
- A customer may terminate service under this program by providing the utility a minimum of 60 days' notice.



California Solar Initiative

Miscellaneous Tariff Provisions (cont'd.)

- Generating Account must receive Bundled Service
- Benefiting Account(s) must receive Bundled Service
- The Generating Account under AB 2466 would not be eligible to participate on Net Energy Metering (NEM)
- The CPUC is required to ensure that the costs to transfer the Bill Credit to a Benefiting account does not result in a shifting of costs to Bundled Service customers
- A local government shall provide the utility not less than 60 days' notice prior to an eligible renewable generating facility becoming operational



California Solar Initiative

Costs

- The customer is responsible for all interconnection costs.
- If the customer does not have the metering necessary to bill on this tariff, it is responsible for all meter-related costs.
- Billing — The transfer of a Bill Credit to Benefiting Accounts should not result in a shifting of costs to bundled service customers. The costs associated with the transfer of a Bill Credit shall include all billing-related expenses.



California Solar Initiative

Issues

- Reconciling AB 2466 with existing ratepayer-funded programs and net metering tariffs.
- Reconciling inconsistencies between AB 2466 and the CEC's "Renewable Portfolio Standard Eligibility Commission Guidebook."
- Reconciling provisions of SB1 on generator sizing to on-site load to funding restriction offered in the SGIP and CSI programs.



California **Solar** Initiative

Looking to the Future & Other Discussion Topics

CSI Database Tool (PowerClerk) Update

Andrew Yip, PG&E



California **Solar** Initiative

Upcoming 2009 Features

Features

- Addition of PMRS and PDP fields
- Application upload feature
- Upload feature for documents
- Incorporating MASH



California **Solar** Initiative

Upcoming 2009 Features (cont'd.)

Benefits

- Streamlining application process
- Time and paper savings
- Expanding the program



California **Solar** Initiative

Looking to the Future & Other Discussion Topics

Simplifying the CSI Application

Andrew Yip, PG&E



California **Solar** Initiative

Simplification Ideas

- Copy of Utility Bill
- Copy of Executed PMRS Contract
- System Description Worksheet
- Project Cost Affidavit

- Other Ideas?



California **Solar** Initiative

Looking to the Future & Other Discussion Topics

Updates to California Solar Statistics Web Site

Molly Sterkel, CPUC



California **Solar** Initiative

Looking to the Future & Other Discussion Topics

CEC Installer List

Moving Panels Voids Warranty

Theft of Panels

CPUC, Program Administrators



California **Solar** Initiative

Q&A Panel

Responses to Questions Submitted Prior to Forum

CPUC, Program Administrators



California **Solar** Initiative

Closing Remarks

Bob Botkin, SCE

