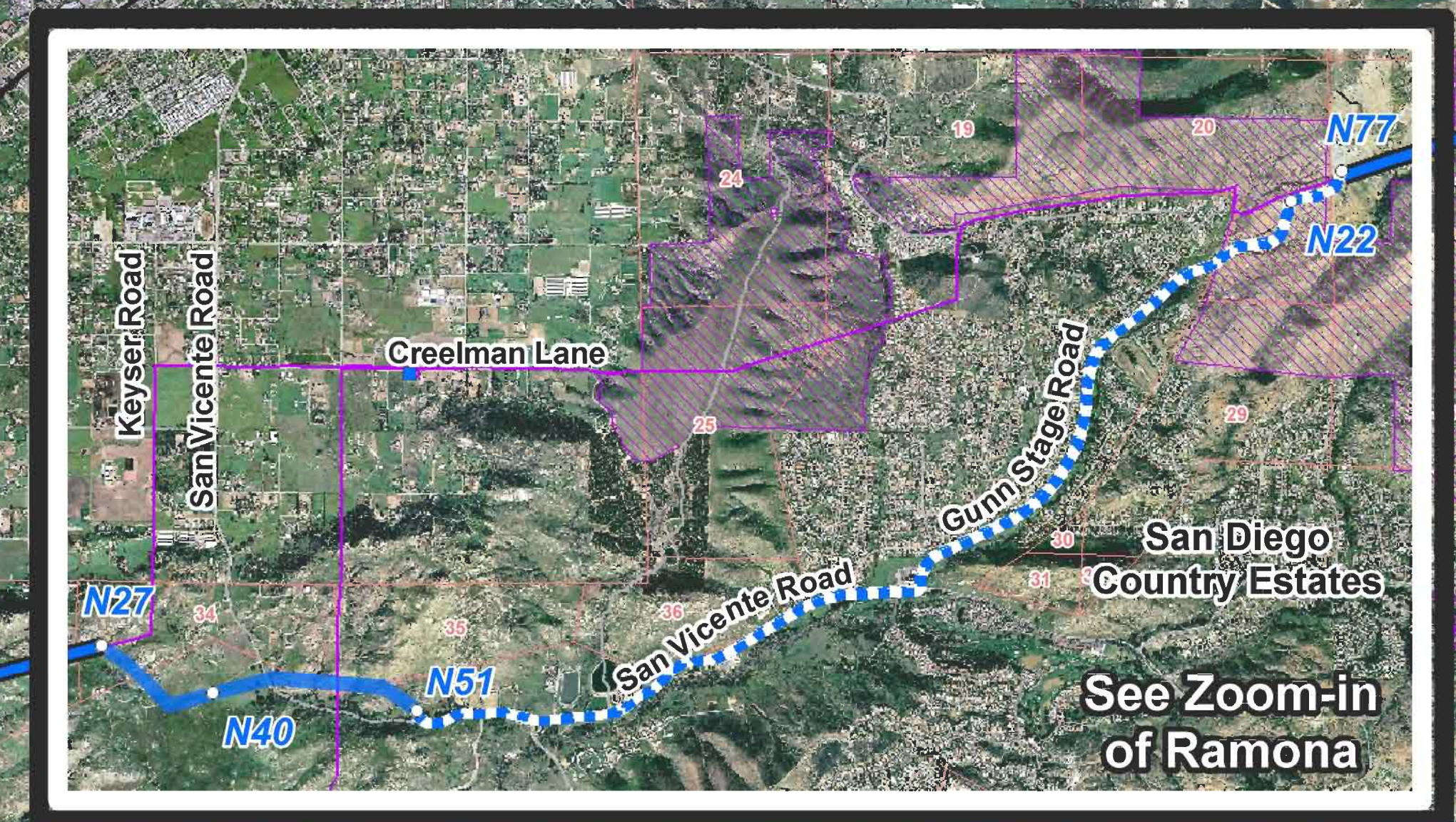


INLAND VALLEY LINK 230 kV



0 0.5 1 1.5
Miles

State Plane Coordinate System
California Zone 8, NAD 83
Lambert Conformal Conic Projection
1983 North American Datum
Central Meridian: -118.25
First Standard Parallel: 32.75
Second Standard Parallel: 35.38
False Easting: 600,000.00
False Northing: 100,000.00
Linear Unit: Foot US



Legend

Existing 138 kV / 115 kV / 69 kV Substation	Inland Valley Link 230 kV	Bureau of Land Management Land
Existing 230 kV Transmission Line	Proposed Project	Indian Land
Existing 138 kV Transmission Line	Consolidated ROW Proposed Project	U. S. Forest Service Land
Existing 69 kV Transmission Line	Underground Proposed Project	Federal Land
Major Road	Existing 69 kV Transmission Line Relocated	State Land
Road		Department of Defense Land
Municipality		
Unincorporated Town		
Preserve, Reserve, and/or Open Space		
Section Line		

Figure 5A

SUNRISE POWERLINK

Proposed Project
Inland Valley Link

SDGE
A Sempra Energy utility

Map Extent: San Diego County, California
Date: 07/28/06 Figure 2.3-1E Author: xpw
G:\projects\1994_SDG&EMaps\Preferred Routes - Inland Valley Link.mxd