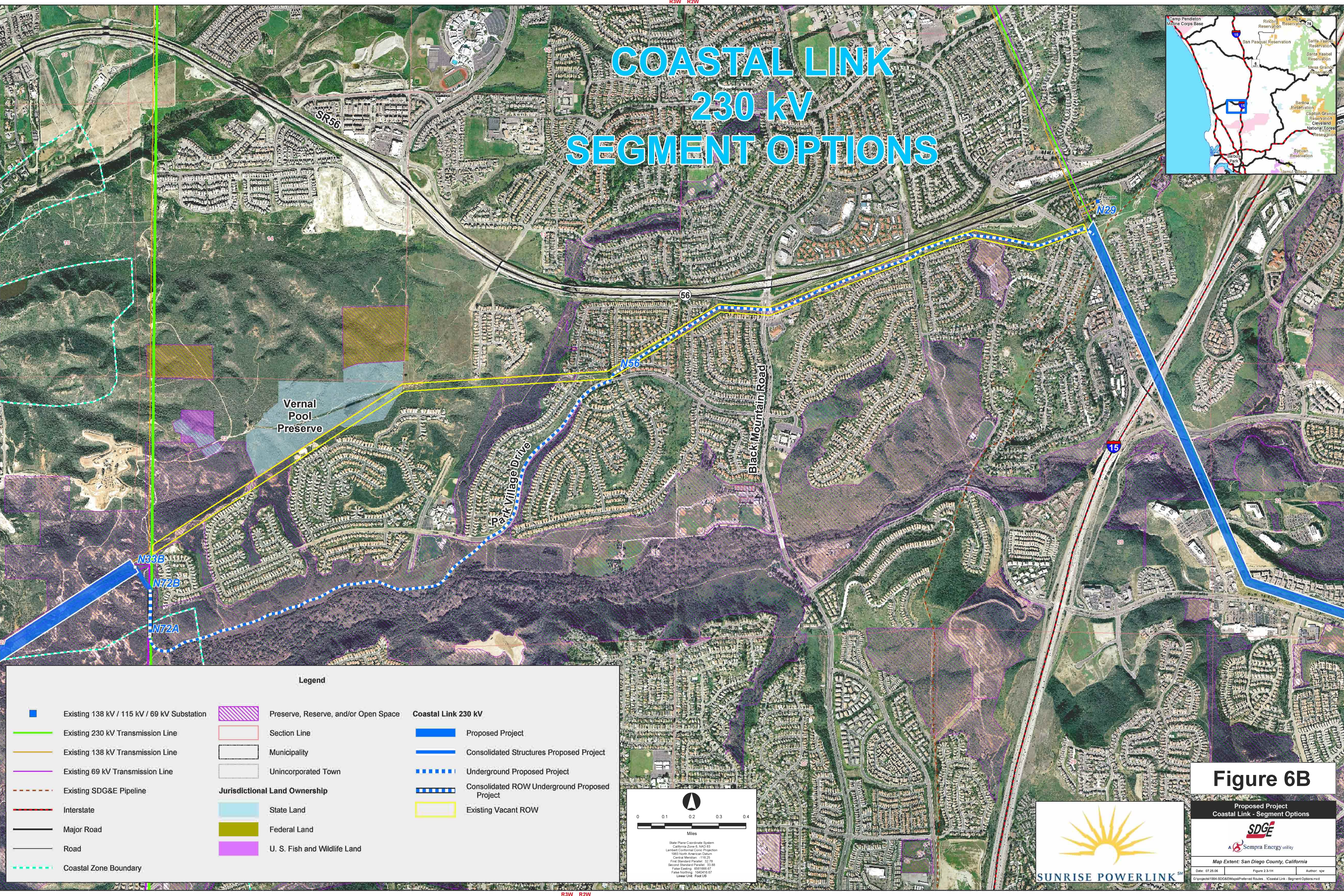
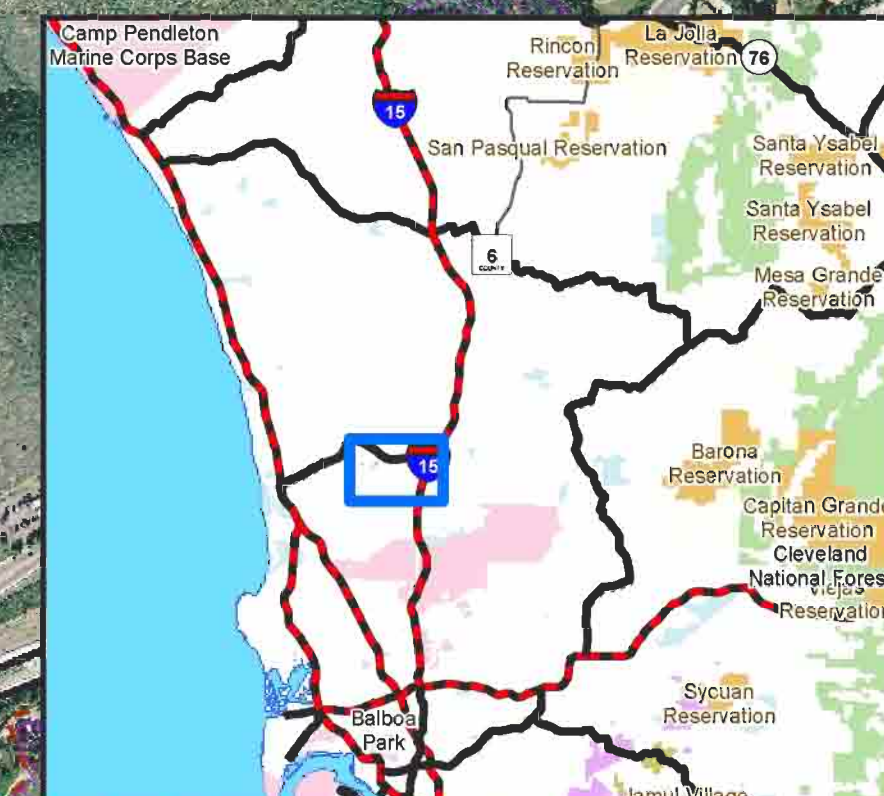


COASTAL LINK 230 kV SEGMENT OPTIONS



Legend

- | | | |
|---|--------------------------------------|---|
| Existing 138 kV / 115 kV / 69 kV Substation | Preserve, Reserve, and/or Open Space | Coastal Link 230 kV |
| Existing 230 kV Transmission Line | Section Line | Proposed Project |
| Existing 138 kV Transmission Line | Municipality | Consolidated Structures Proposed Project |
| Existing 69 kV Transmission Line | Unincorporated Town | Underground Proposed Project |
| Existing SDG&E Pipeline | Jurisdictional Land Ownership | Consolidated ROW Underground Proposed Project |
| Interstate | State Land | Existing Vacant ROW |
| Major Road | Federal Land | |
| Road | U. S. Fish and Wildlife Land | |
| Coastal Zone Boundary | | |

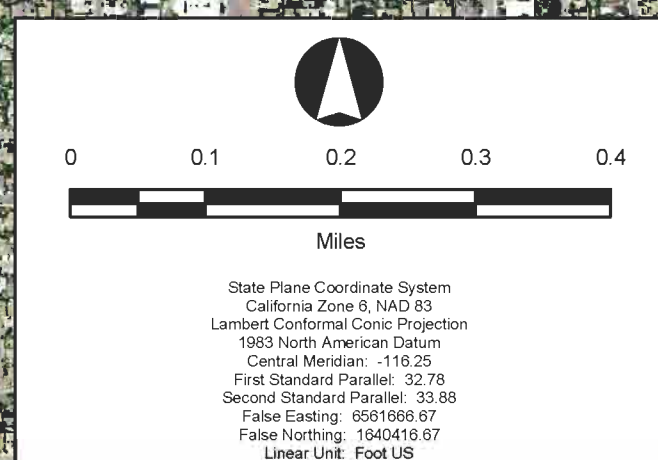


Figure 6B

Proposed Project
Coastal Link - Segment Options



Map Extent: San Diego County, California

Date: 07.25.06 Figure: 2.3-1H Author: sjw
G:\projects\1984-SDGE\Mapa\Preferred Routes - Coastal Link - Segment Options.mxd

