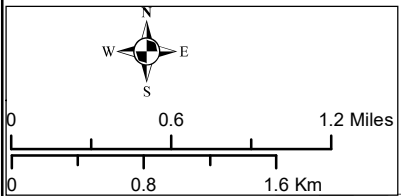
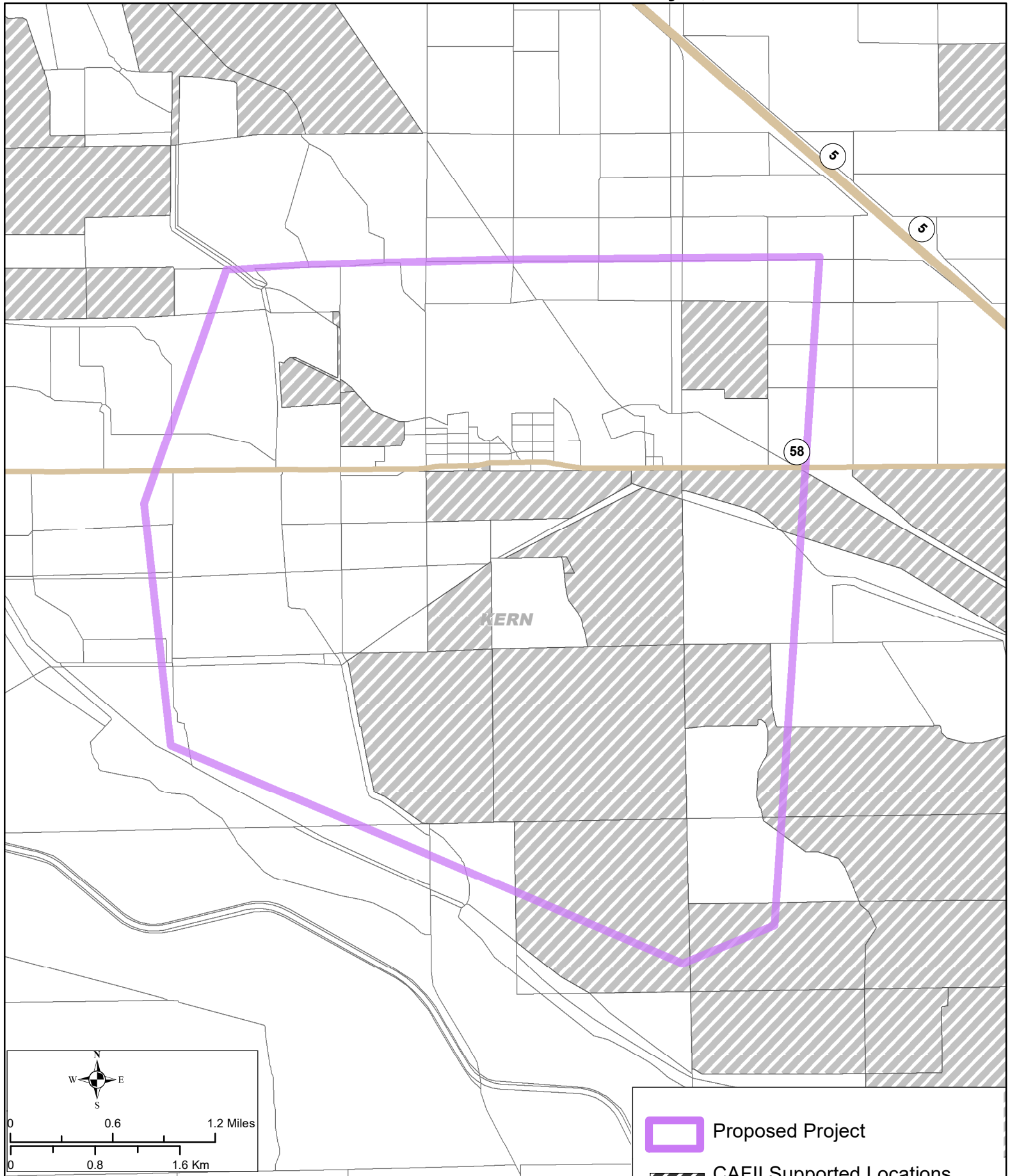






# STATE OF CALIFORNIA

## Frontier CASF Infrastructure Grant Application

### Taft Cluster - Buttonwillow - May 1, 2019



Data Source:  
Service availability data submitted by California broadband providers and validated by the CPUC. Data as of December 31, 2017.  
Map created by the CPUC, Communications Division, CASF Infrastructure Group, May 13, 2019.

-  Proposed Project
-  CAFII Supported Locations  
CAFII Provider - Frontier