

PST Southern Lassen Project Summary

Revised 7/30/21

Applicant:

Plumas-Sierra Telecommunications
U-Number: U-7218-C

Contact Person:

Corby Erwin
Member Services Manager
73233 State Route 70
Portola, CA 96122
530-832-6034
cerwin@psrec.coop

Project Title:

PST Southern Lassen Mid-Mile / Last-Mile Broadband Project

Proposed Project Area Location:

Southern Lassen area, Lassen County

Project Type:

Hybrid Mid-Mile and Last-mile

CASF Funding Requested:

\$ 11,108,189 in grant funds

Description of the Project:

To leverage the current PST mid-mile fiber network for which Plumas-Sierra Telecommunications was awarded ARRA and CASF funds, PST is now applying for additional CASF funding to deploy further mid-mile and last-mile broadband networks to serve the Southern Lassen area of Lassen County.

The mid-mile network expansion is vital to reach the deployment area for the last-mile target residences. The last-mile network will use fiber optic wireline technology interconnected with PST's mid-mile fiber network to offer service to 138 households in these unserved areas of Lassen County.

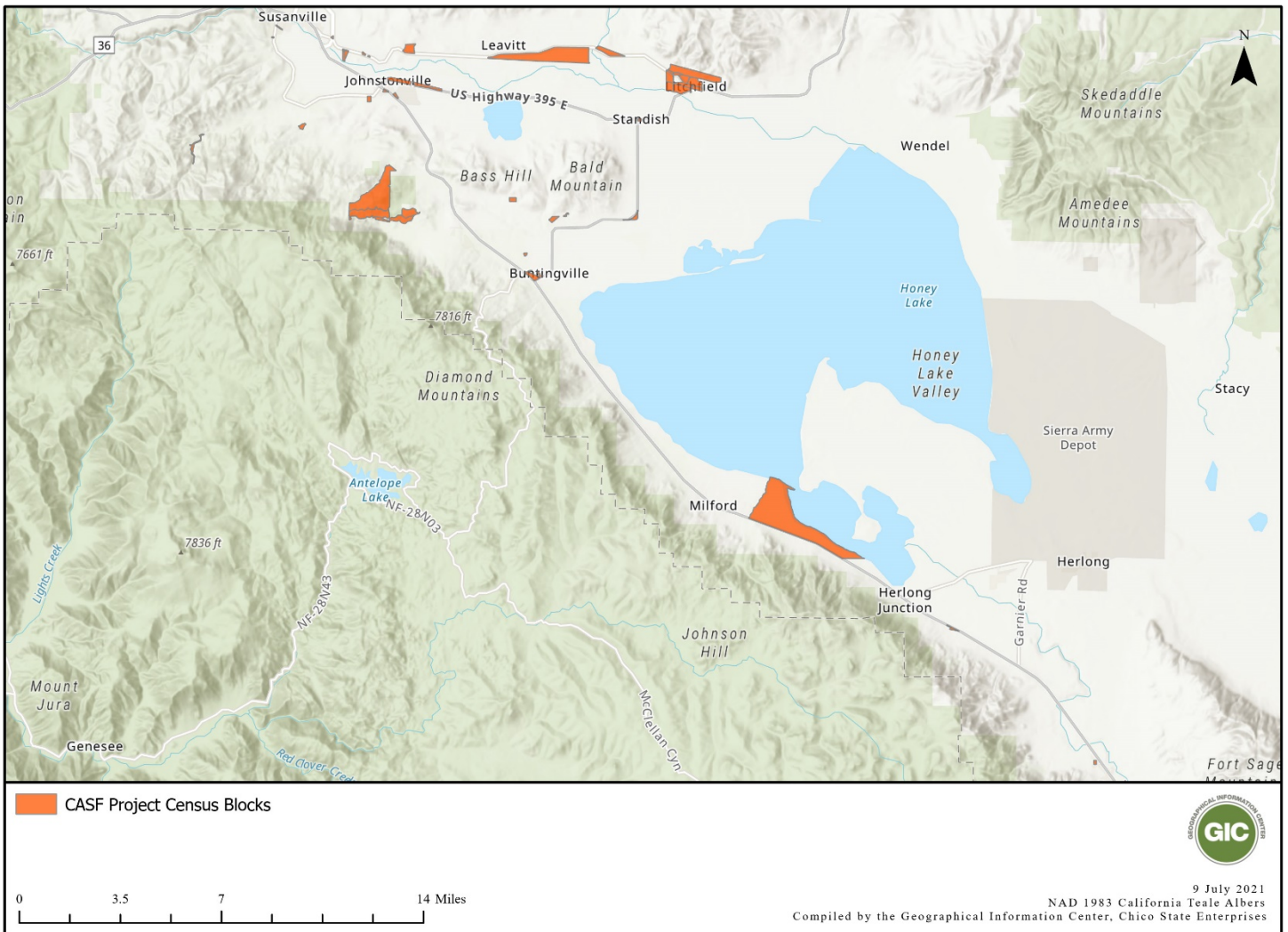
Service offerings will include minimum speeds of 10Mbps down/1Mbps up and maximum speeds of up to 1Gbps down/1Gbps up. PST's service offerings will not have data caps.

The use of fiber optics will allow PST to provide the households in this application with the most current technology, offering an improved quality of life that is not available to these residents now because of their current broadband isolation.

The COVID-19 Pandemic has highlighted the need for broadband services for working and learning from home. This project will provide much needed service in these rural areas of California.

Map of the proposed project:

Southern Lassen Project Area



Fixed Broadband Served Status by Census Block within project area:

	Unserved		
	- Slow Service	Unserved - No Service	Unserved Total
Population	0	312	312
Households	0	138	138
Housing Units	0	165	165

This project will bring service to 138 households in the following 49 census blocks.

Census Blocks to be served:

- 060350403021023
- 060350406003100
- 060350405003018
- 060350404001059
- 060350405002014
- 060350405003008
- 060350405003055
- 060350403022060
- 060350404001057
- 060350404001022
- 060350404001058
- 060350406001354
- 060350404001020
- 060350404001018
- 060350404001112
- 060350403021015
- 060350403031040
- 060350403021007
- 060350403023032
- 060350403021013
- 060350404001001
- 060350404001009
- 060350403022024
- 060350403021031
- 060350404001061
- 060350403031077
- 060350403022036

060350405003047
060350405001022
060350404001131
060350403023024
060350404001076
060350403042044
060350403022000
060350404001016
060350405001011
060350403021058
060350405001005
060350403021057
060350406001276
060350405002013
060350405002016
060350404001042
060350405003052
060350404001046
060350403021026
060350403021033
060350405003016
060350404001015

Funding Level:

The area applied for is 100% unserved according the CPUC’s 2019 Housing Unit projections. No existing CAF II areas are within project area. Requesting 100% project funding.

The project area includes 49 census blocks in Lassen County in the community of Southern Lassen. This area encompasses 10.42 Square Miles.

Median Household Income: \$62,624

Anchor Institutions, Public Safety Locations and Businesses:

The project area includes three Anchor Institutions or Public Safety Locations as identified by the current California Interactive Broadband Map.

Major Infrastructure and Equipment to be Deployed:

- 1 E7 Chasis
- 2 GPON card
- 16 40K SFPs
- Cienna Switch

Aerial and Underground Installation:

- 18.03 Miles of underground infrastructure
- 95.61 Miles of overhead infrastructure

Estimated Construction Timeline: 9 months

Proposed Broadband Project Plan:

The PST Southern Lassen Mid-Mile / Last-Mile Broadband Project plans to use fiber optic cable to provide download speeds of up to 1 Gbps and upload speeds of up to 1 Gbps with no data caps.

PST is leveraging its current mid-mile fiber network for which it was awarded ARRA and CASF funds, and existing infrastructure of its parent company, Plumas-Sierra Rural Electric Cooperative to deploy this additional mid-mile and last-mile broadband network to serve the Southern Lassen area of Lassen County. The mid-mile network expansion is vital to reach the deployment area for the last-mile target residences because there is no existing mid-mile infrastructure to interconnect with for this project, and without it, PST will not be able to provide service to these areas.

Plumas-Sierra Telecommunications believes that this mid-mile / last-mile broadband project is categorically exempt from CEQA requirements based on the findings of the CEQA analysis conducted for the previous ARRA grant, and because PST is using existing public utility easements considered previously disturbed. PST believes this project is exempt under CEQA Article 19, Sections 15301 b and 15303 d.

PST is not disputing the Broadband Map depiction of served status.

PST is not seeking Ministerial Review of this project.