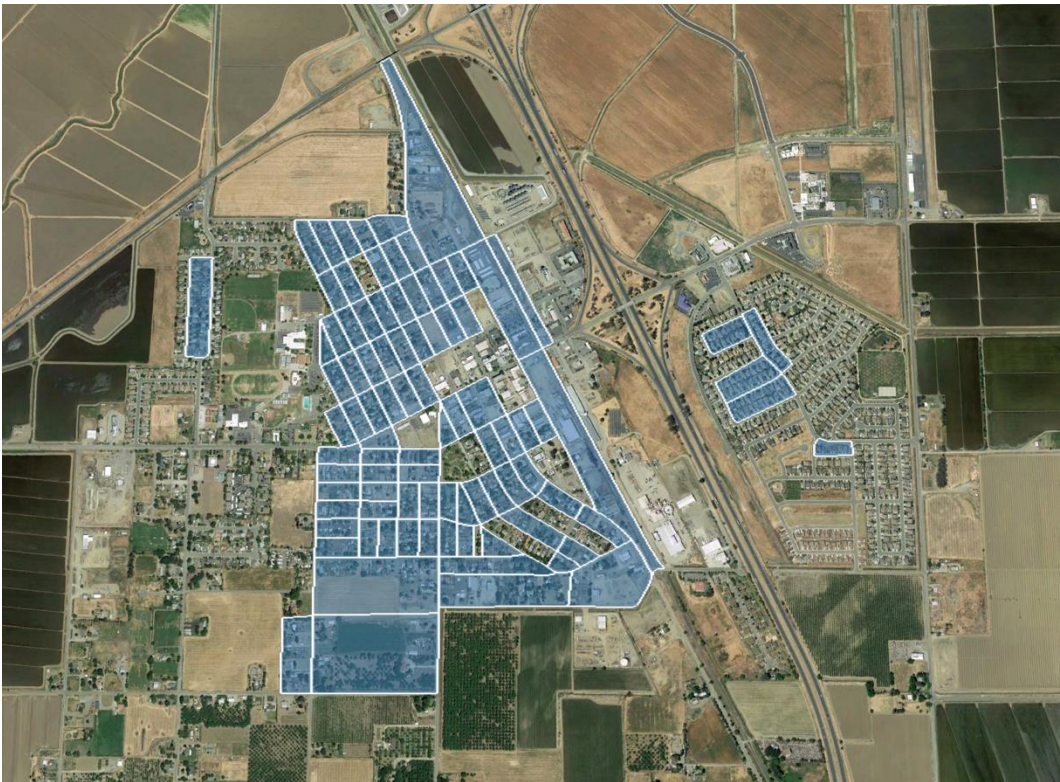
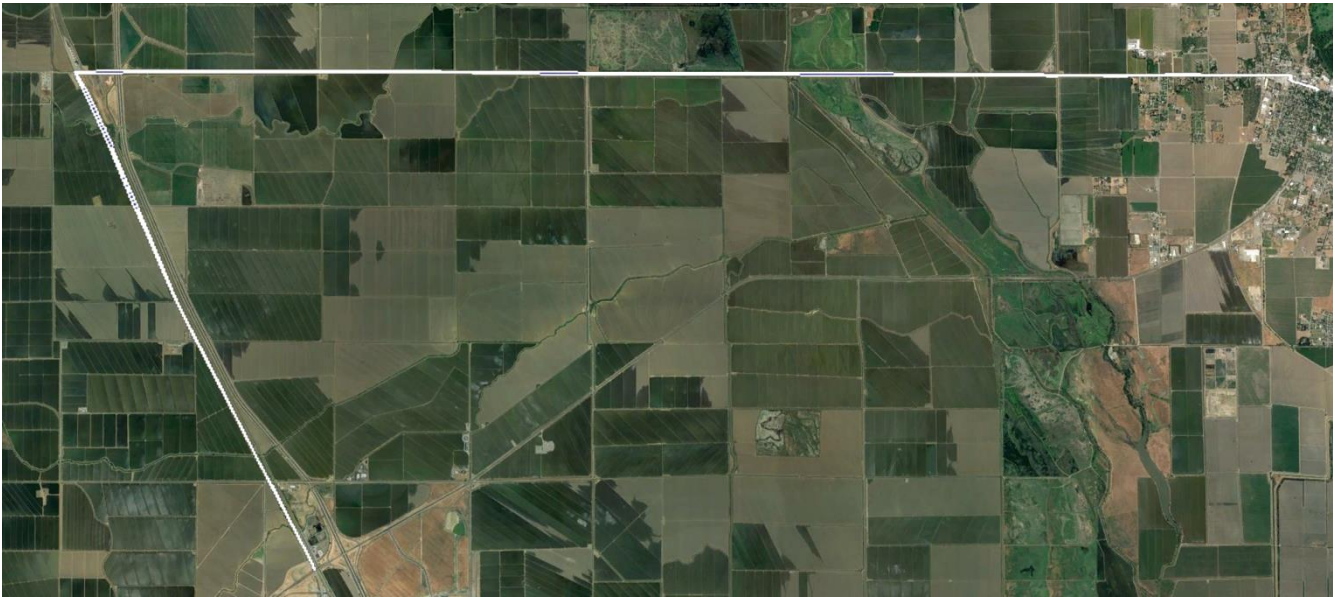


Project Summary

- **Applicant Information**
 - **Company/Applicant's Name:** Race Telecommunications, Inc.
 - **CPCN:** U7060C
 - **Contact:** Raul Alcaraz
 - **Project Title:** Gigafy Williams
 - **Proposed Project Location:** Williams, California
 - **Project Type:** Last Mile / Middle Mile
 - **CASF Grant Funding Requested:** \$6,758,805
 - **Total Project Cost:** \$8,448,507
- **Map of the proposed project area**



- **Map of the proposed Middle Mile Area:**



- **The number of unserved households with no-service and the number of unserved households with slow-service for which the project will provide service**
 - Unserved Households No-Service: 588 | Unserved Households Slow-Service: 0
- **If the project is requesting dial-up-only funding, it must state the number of households with dial-up-only service and the number of other CASF-eligible households**
 - Not Applicable
- **The maximum Mbps downstream and upstream speed currently offered to households**
 - Under 6Mbps downstream and 1Mbps upstream
- **Median household income of the project area**
 - \$53,035.01 (Census Block Weighted Average)
- **The number of businesses, anchor institutions and public safety locations in the project area that will receive new or improved service.**
 - Two (2)
- **A description of the major infrastructure to be deployed**
 - Race Telecommunications, Inc. is applying for CASF Funding to deploy a fiber -to-the-premises (FTTP) Last Mile network to serve 100% of the homes identified by the GPS coordinates in the defined service area that includes the city of Williams,

California. Fiber based internet speeds will offer packages including 1Gbps (1000 Mbps) down and 1Gbps (1000 Mbps) up.

- **Estimated breakdown of aerial and underground installation**
 - 110,250 feet of aerial installation and 43,374 of underground installation.
- **Major equipment expenses**
 - Ciena & Calix Electronics are the core and access equipment that will be deployed.
- **Estimated construction timeline**
 - Normal operating procedures plan for the project to be completed within 24 months from permitting with a phased rollout approach that allows customers to get installed as portions of the network are activated.
- **Description of proposed broadband project plan for which CASF funding is being requested, including the type of technology to be provided in the proposed service areas:**
 - **Download speed capabilities of proposed facilities.**
 - 1000Mbps
 - **Upload speed capabilities of proposed facilities.**
 - 1000Mbps
 - **Sufficient construction detail to enable a preliminary indication of the need for a California Environmental Quality Act (CEQA) review and if proposed project areas contains any environmentally sensitive areas.**
 - Race's approach to design is to provide low to no environmental impact by focusing on existing disturbed terrain that would allow for CEQA exemption.
 - **Identification of the leveraging of existing available facilities**
 - Race will connect to existing HUB sites that will allow for leveraging existing resources and efficiencies.
 - **A statement of whether the applicant is disputing the Broadband Map depiction of served status.**
 - We are not disputing the Broadband Map depiction of this area.
 - **A statement of whether the applicant is seeking Ministerial Review and, if so, information that the application meets all requirements for Ministerial Review.**
 - We do not meet the criteria for Ministerial Review.
 - **An explanation of why any Middle Mile facilities in the proposed project are "indispensable" for accessing the proposed last-mile infrastructure.**
 - Race understands that middle mile is the single most important aspect of a project, and without that singular item a project such as this will not be

built. Race understand there may be other long-haul fiber that passes through the area, but due to current Covid-19 circumstances vetting of those facilities for capacity and access with those particular vendors has been none existent. Race has taken the approach to designing and budgeting for a middle mile build to a long haul regen facility within region, that we know will not have issues with access or capacity. This allows Race with confidence to build this last mile project, without having any middle mile concern.

Census Blocks

Last Mile CB	Middle Mile CB
060110003003002	060110002002044
060110003004044	060110005001089
060110003002011	060110002002020
060110003004058	060110002002033
060110003002031	060110002002040
060110003003007	060110002002031
060110003003046	060110002002062
060110003003029	060110005003003
060110003004065	060110003001078
060110003002007	060110005001088
060110003002002	060110003001072
060110003002025	060110003001119
060110003003000	060110004001222
060110003004066	060110003001081
060110003003014	060110003001101
060110003003037	060110003001073
060110003003019	060110003001098
060110003002024	060110003001102
060110003002034	060110004002117
060110003002003	060110003001062
060110003002038	060110003001063
060110003002026	060110003001099
060110003003041	060110004001225
060110003002014	060110003001074
060110003003004	060110003001075
060110003003026	060110004001226
060110003003023	060110004001237
060110003003035	060110003001069
060110003003042	060110004001227

060110003003032	060110003001100
060110003002006	060110003001079
060110003003036	060110003001090
060110003003016	060110003001065
060110003003024	060110003001064
060110003003043	060110003001089
060110003004077	060110005003001
060110003002020	060110002002067
060110003004017	060110002002058
060110003004014	060110005001106
060110003004078	060110002002069
060110003003033	060110005003002
060110003003045	060110002002041
060110003002042	060110002002023
060110003003030	060110002002027
060110003004079	060110002002046
060110003004042	060110002002054
060110003002027	060110002002045
060110003002032	060110002002063
060110003004056	060110005001072
060110003004082	060110002002048
060110003002016	060110002002068
060110003003001	060110002002047
060110003004135	
060110003004081	
060110003003006	
060110003003018	
060110003003040	
060110003002035	
060110003002015	
060110003002036	
060110003004061	
060110003003031	
060110003002001	
060110003002013	
060110003003013	
060110003002040	
060110003002012	
060110003004013	
060110003004015	
060110003003034	
060110003003027	
060110003002037	

060110003002009 060110003004060 060110003003011 060110003003047 060110003002039 060110003002017 060110003002030 060110003003005 060110003003012 060110003003015 060110003003017 060110003002010 060110003003010 060110003004062 060110003002033 060110003002004 060110003002018 060110003003020 060110003003021	
---	--