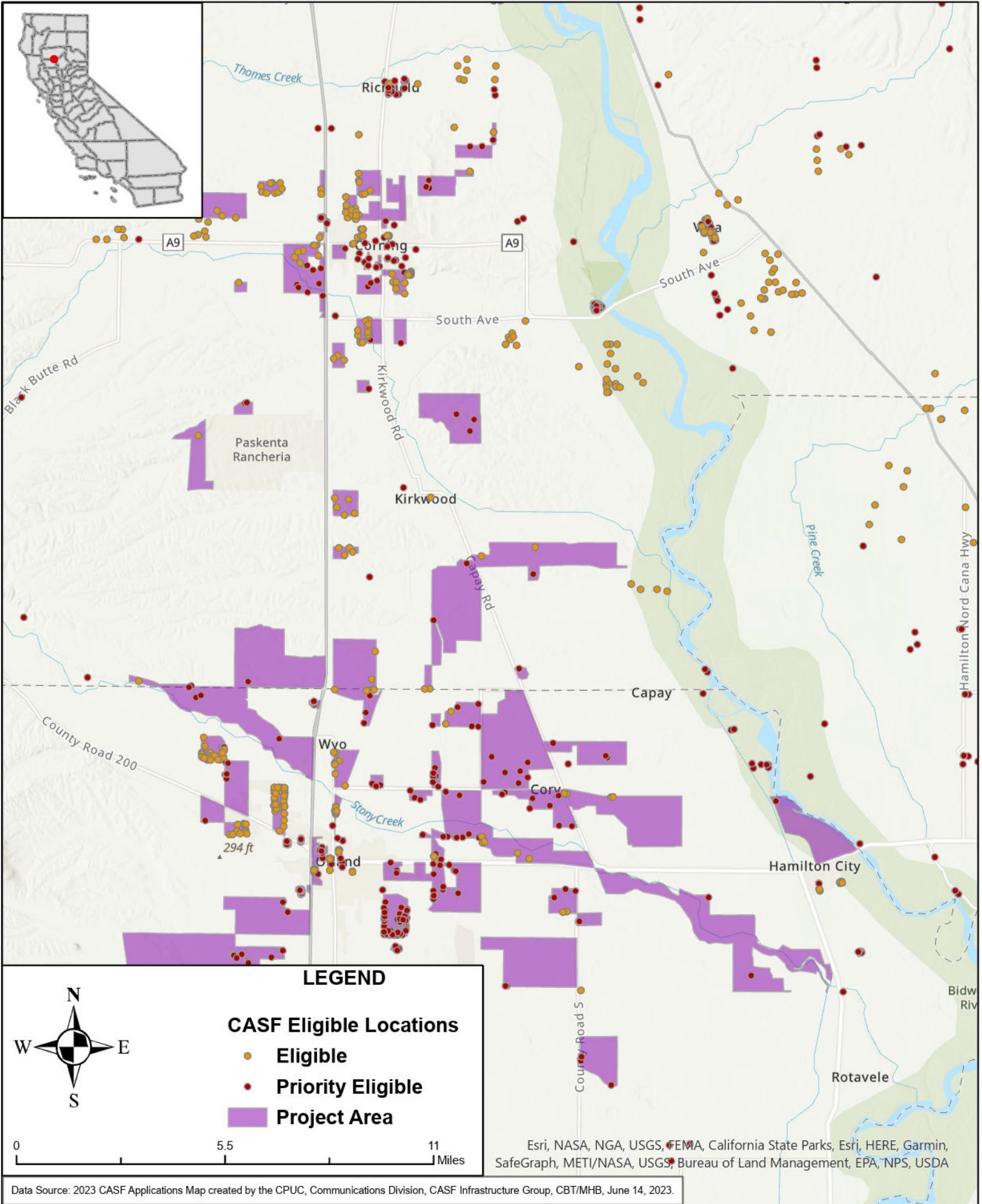




# STATE OF CALIFORNIA

## Digital Path - Proposed Infrastructure Grant Application

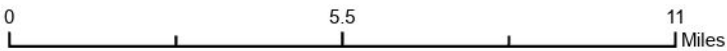
### Grapit - June 1, 2023



#### LEGEND

#### CASF Eligible Locations

- Eligible
- Priority Eligible
- Project Area



Esri, NASA, NGA, USGS, FEMA, California State Parks, Esri, HERE, Garmin, SafeGraph, METI/NASA, USGS, Bureau of Land Management, EPA, NPS, USDA