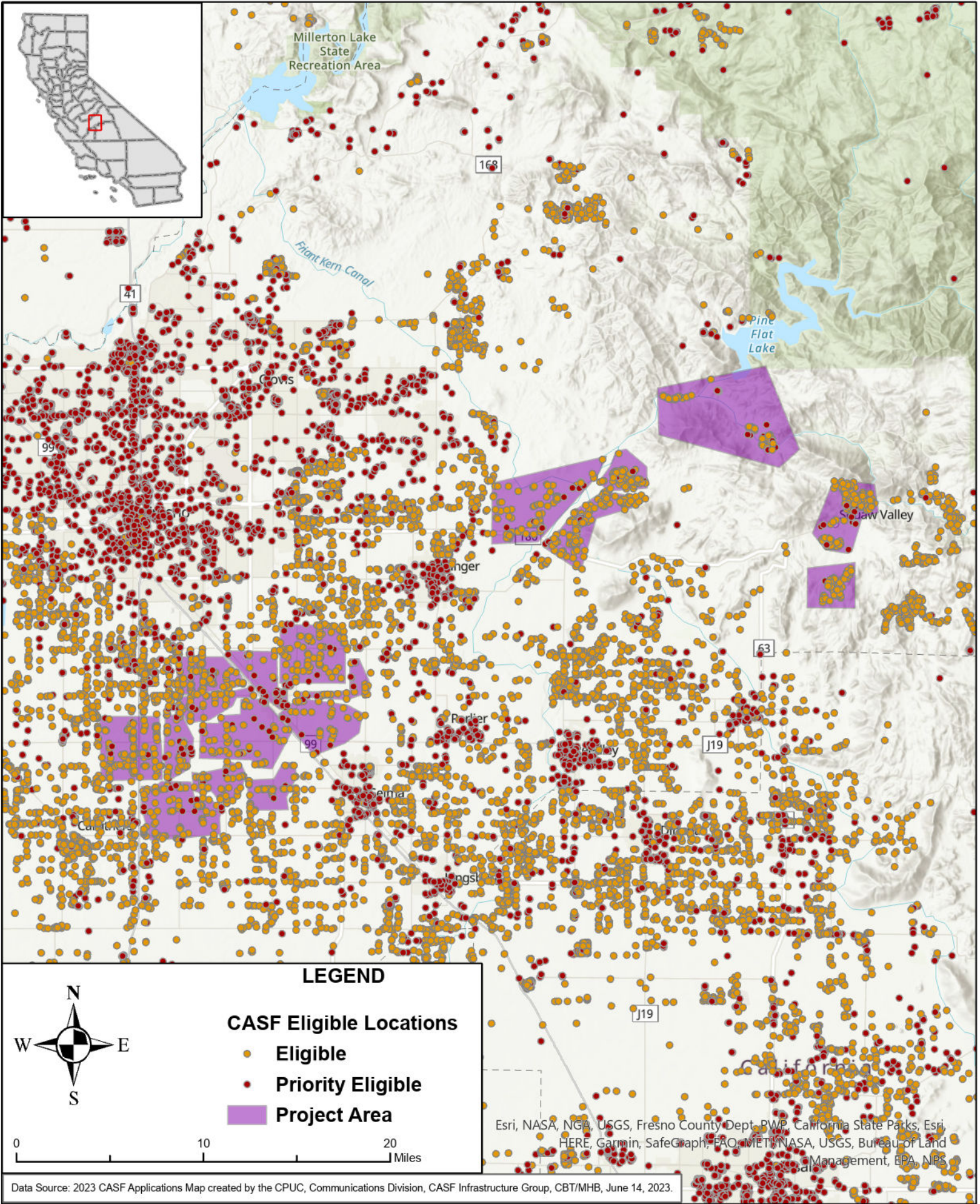




STATE OF CALIFORNIA

Frontier - Proposed Infrastructure Grant Application

Fresno County - June 1, 2023



LEGEND

- CASF Eligible Locations**
- Eligible
 - Priority Eligible
 - Project Area



0 10 20 Miles

Esri, NASA, NGA, USGS, Fresno County Dept. BWP, California State Parks, Esri, HERE, Garmin, SafeGraph, FAO, METI/NASA, USGS, Bureau of Land Management, EPA, NPS

Data Source: 2023 CASF Applications Map created by the CPUC, Communications Division, CASF Infrastructure Group, CBT/MHB, June 14, 2023.