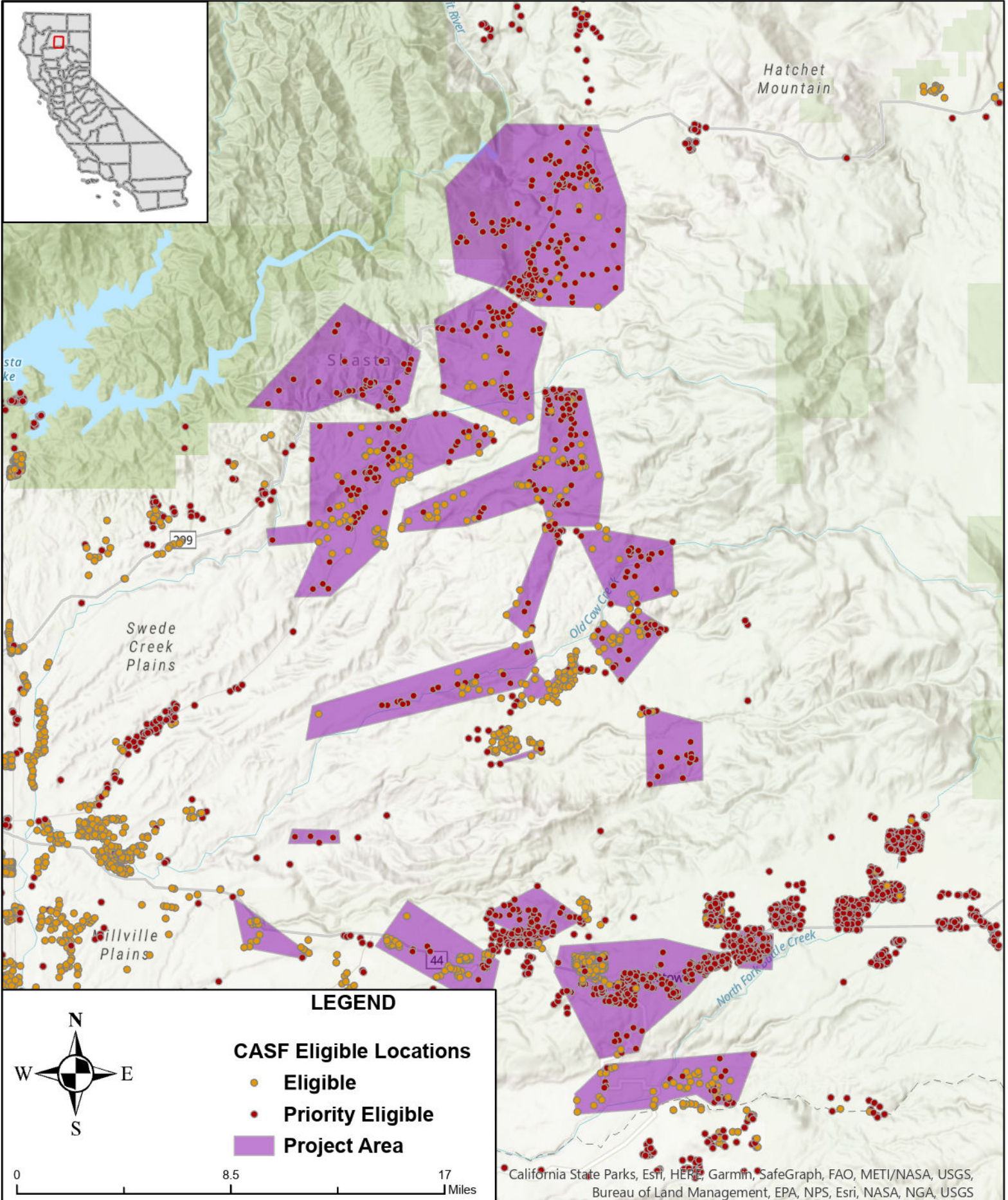




STATE OF CALIFORNIA

Frontier - Proposed Infrastructure Grant Application

Shasta County - June 1, 2023



LEGEND

CASF Eligible Locations

- Eligible
- Priority Eligible
- Project Area



0 8.5 17 Miles

California State Parks, Esri, HERE, Garmin, SafeGraph, FAO, METI/NASA, USGS, Bureau of Land Management, EPA, NPS, Esri, NASA, NGA, USGS