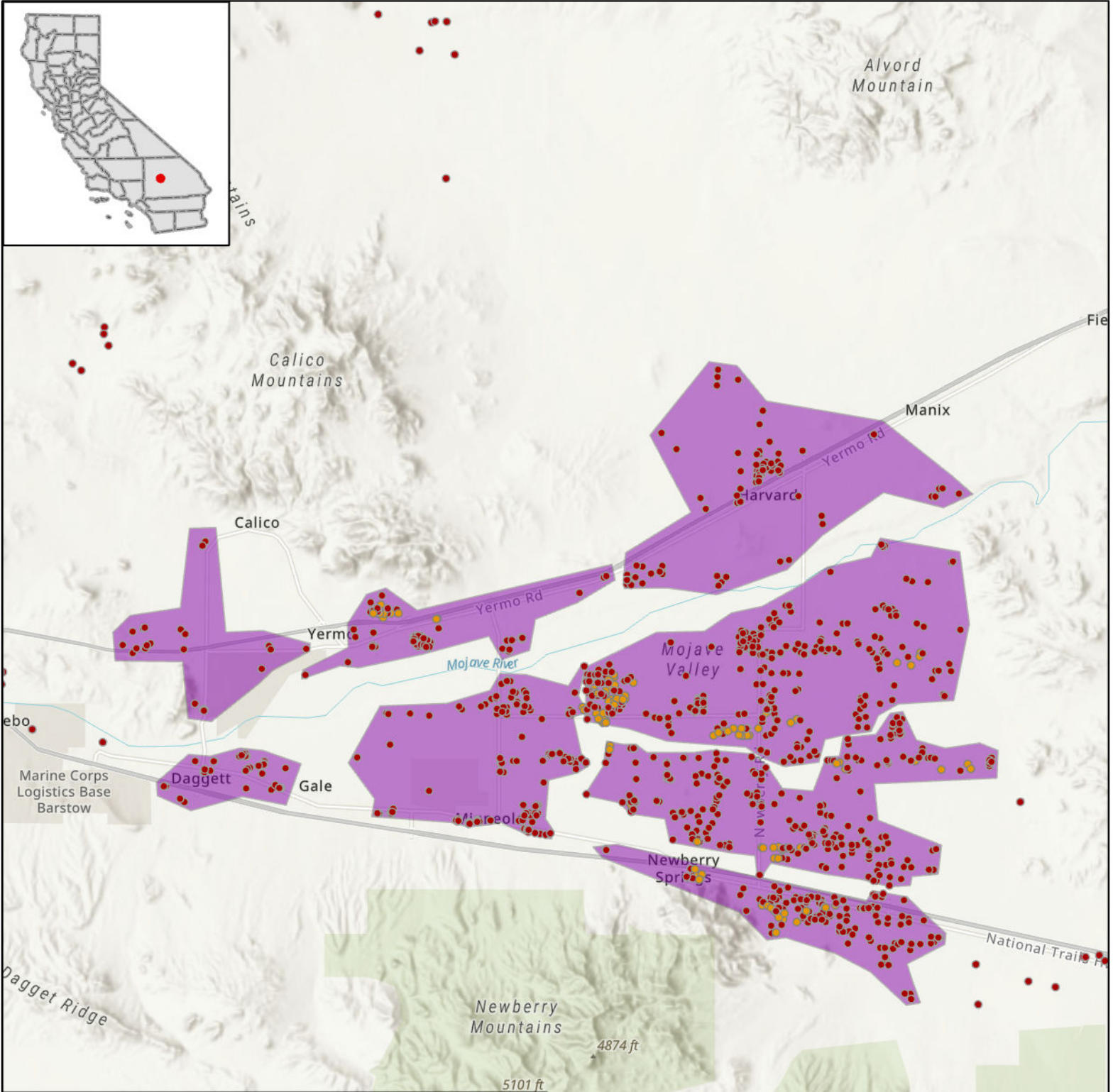




STATE OF CALIFORNIA

Frontier - Proposed Infrastructure Grant Application

San Bernardino County 2 - June 1, 2023



LEGEND

CASF Eligible Locations

- Eligible
- Priority Eligible
- Project Area

0 6.5 13 Miles

Esri, NASA, NGA, USGS, California State Parks, Esri, HERE, Garmin, SafeGraph, METI/NASA, USGS, Bureau of Land Management, EPA, NPS, USDA