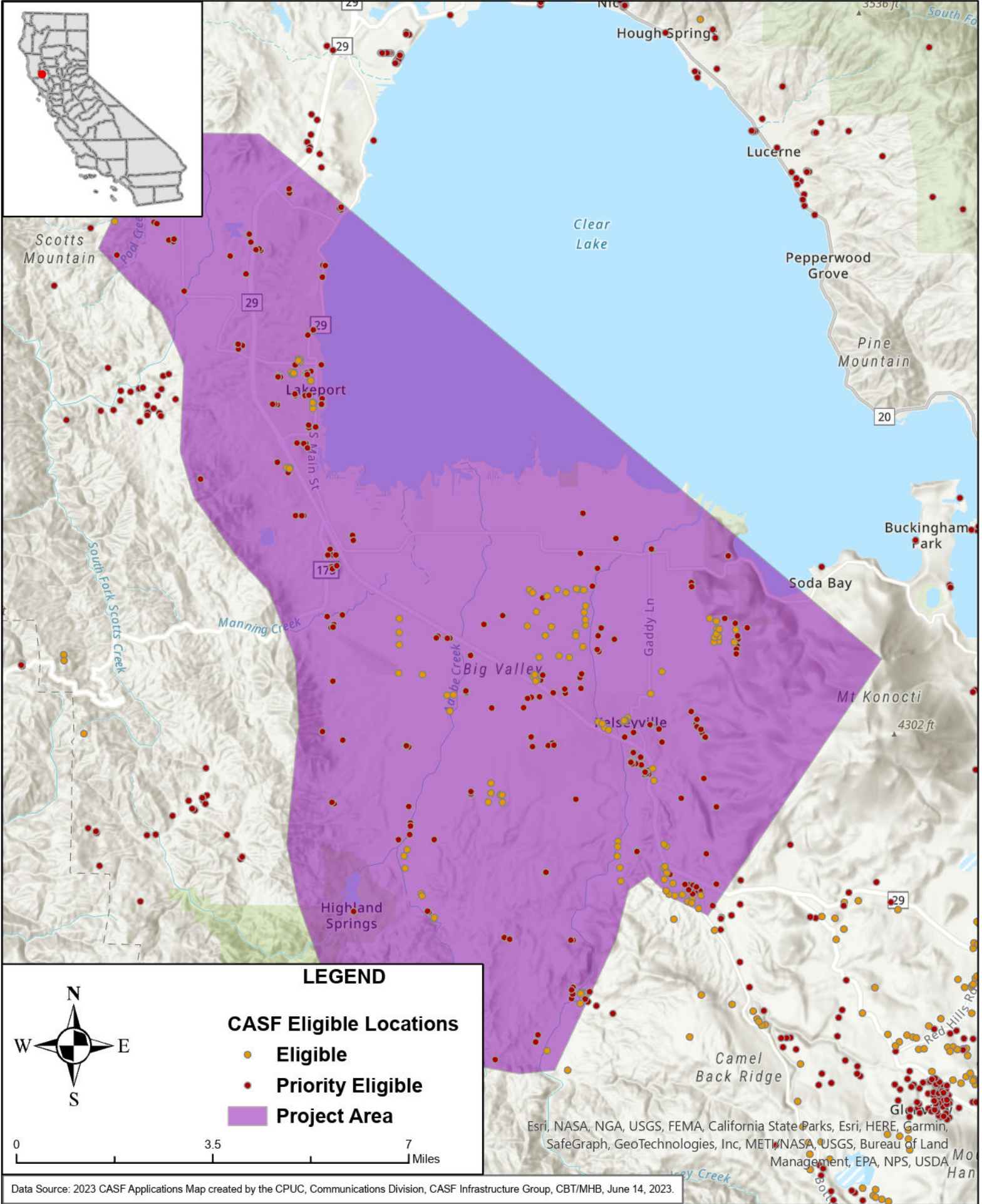




STATE OF CALIFORNIA

North Coast Networks - Proposed Infrastructure Grant Application

Southwest Lake County - June 1, 2023



LEGEND

CASF Eligible Locations

- Eligible
- Priority Eligible
- Project Area



0 3.5 7 Miles

Esri, NASA, NGA, USGS, FEMA, California State Parks, Esri, HERE, Garmin, SafeGraph, GeoTechnologies, Inc, METI, NASA, USGS, Bureau of Land Management, EPA, NPS, USDA