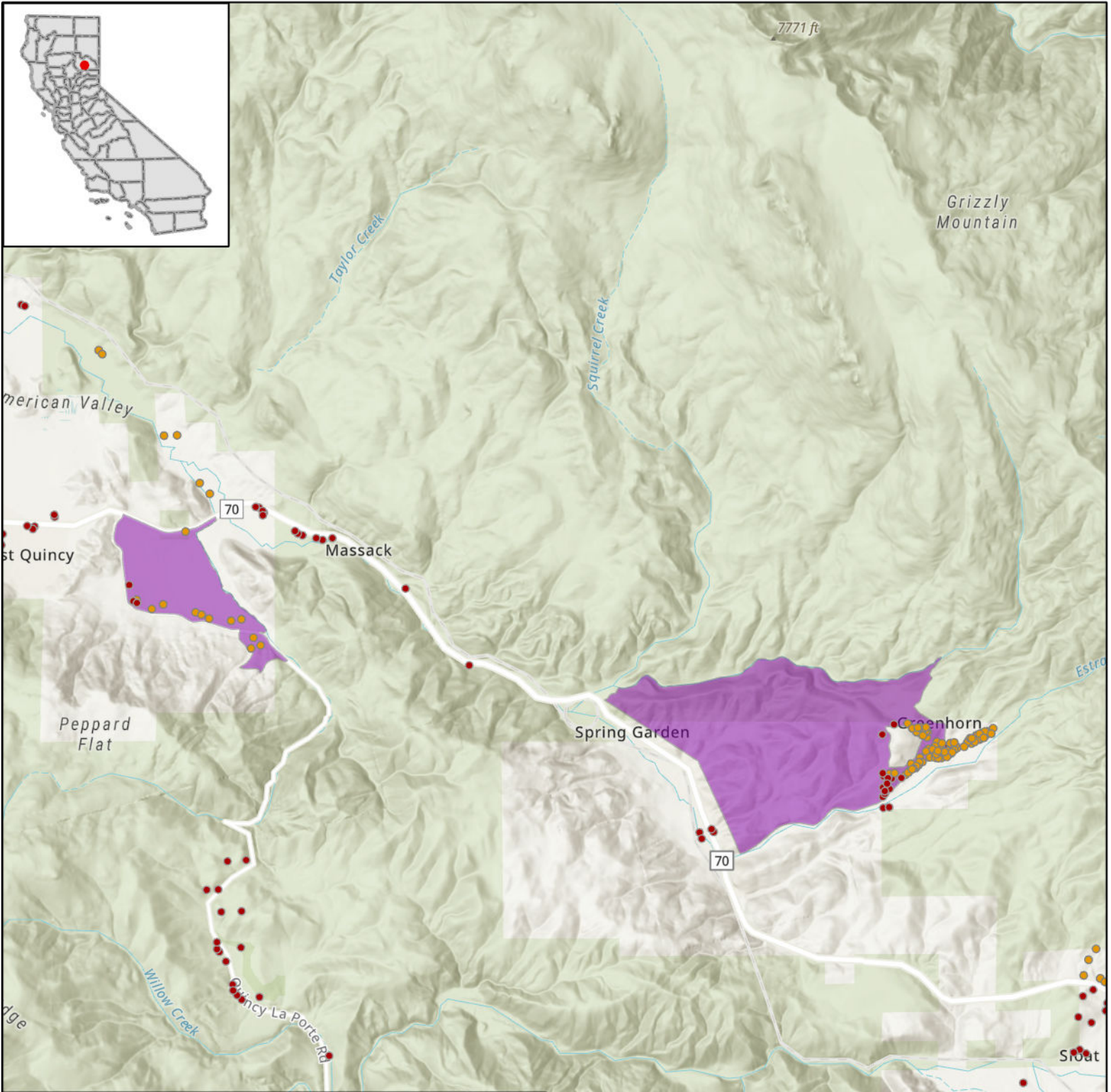




STATE OF CALIFORNIA

Plumas-Sierra Telecommunications - Proposed Infrastructure Grant Application

LaPorte - June 1, 2023



LEGEND

CASF Eligible Locations

- Eligible
- Priority Eligible
- Project Area

0 2.5 5 Miles

Esri, NASA, NGA, USGS, FEMA, California State Parks, Esri, HERE, Garmin, SafeGraph, GeoTechnologies, Inc, METI/NASA, USGS, Bureau of Land Management, EPA, NPS, USDA