

Plumas-Sierra Telecommunications Doyle Broadband Project Summary

Applicant:

Plumas-Sierra Telecommunications
U-Number: U-7218-C

Contact Person:

Jeff Blagg
Right-of-Way Engineer
73233 State Route 70
Portola, CA 96122
530-832-6049
jeff.blagg@psrec.com

Or

Corby Erwin
Consultant
73233 State Route 70
Portola, CA 96122
530-832-6034
corby.erwin@psrec.com

Project Title:

PST Doyle Broadband Project

Proposed Project Area Location:

Doyle in Lassen County

Project Type:

Last-mile

CASF Funding Requested:

PST is requesting the full project cost of \$3,341,886 in grant funds.

Description of the Project:

To leverage the current PST mid-mile fiber network for which Plumas-Sierra Telecommunications was awarded ARRA and CASF funds, PST is now applying for additional CASF funding to deploy further last-mile broadband networks to serve the Doyle area of Lassen County.

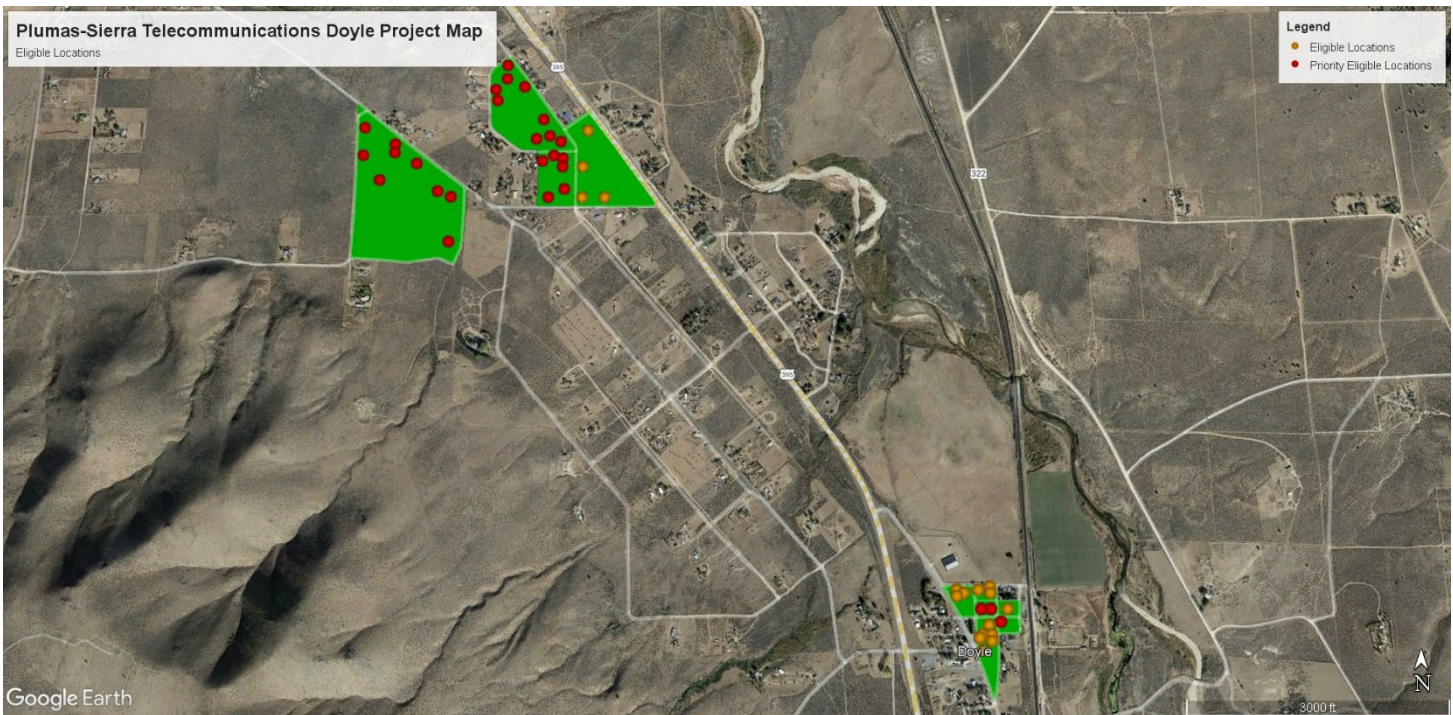
The last-mile network will use fiber optic wireline technology interconnected with PST's mid-mile fiber network to offer service to 44 locations in this unserved area of Lassen County.

Service offerings will include minimum speeds of 100 Mbps down/ 20 Mbps up and maximum speeds of up to 1Gbps down/1Gbps up. PST's service offerings will not have data caps.

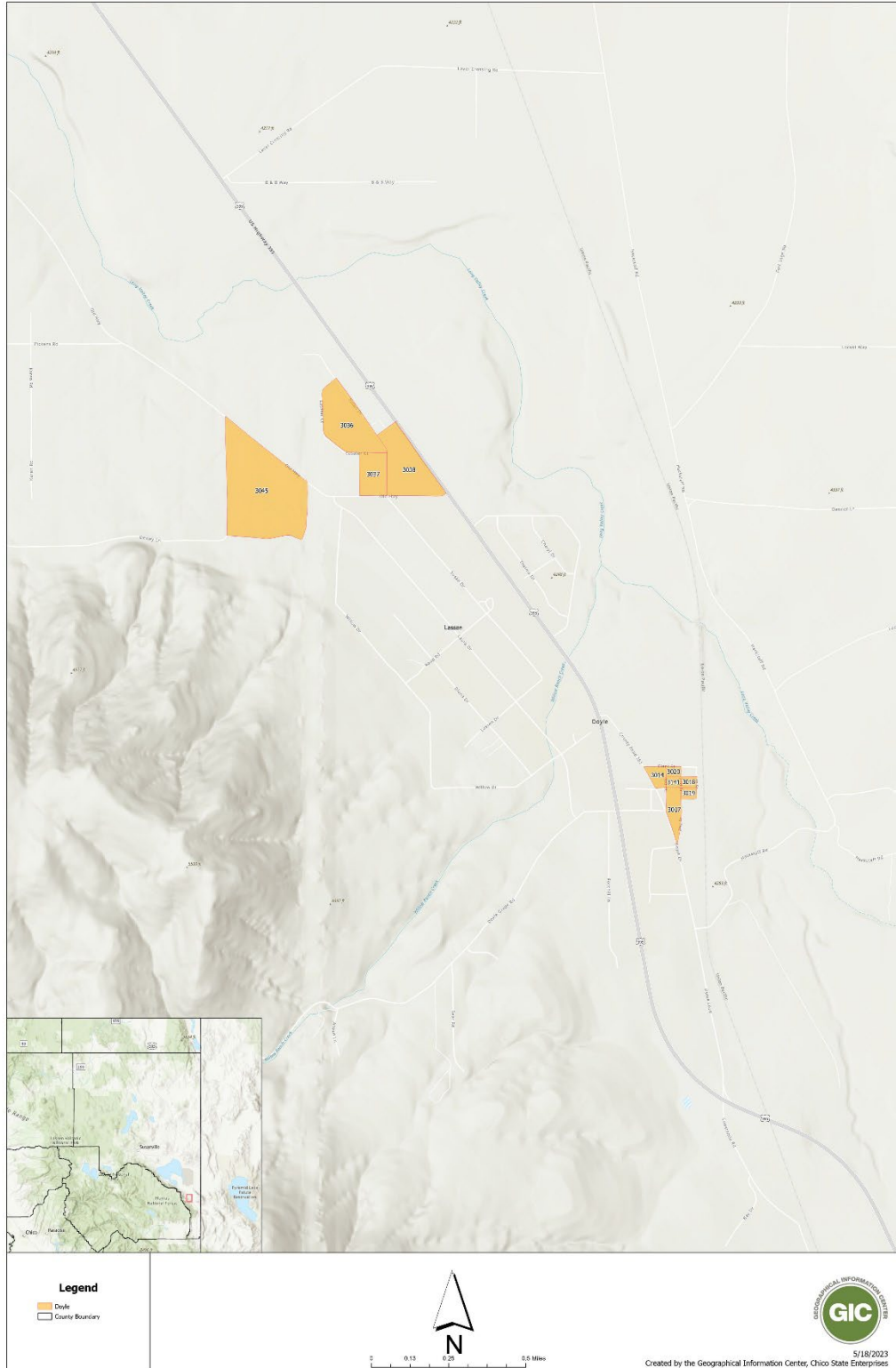
The use of fiber optics will allow PST to provide the households in this application with the most current technology, offering an improved quality of life that is not available to these residents now because of their current broadband isolation.

The COVID-19 Pandemic has highlighted the need for broadband services for working and learning from home. This project will provide much needed service in these rural areas of California.

Maps of the proposed project area follow:



Plumas Sierra Telecom - CASF Lassen: Doyle



Serviceable Locations within project area: 44, all of which are currently Unserved with speeds of less than 25 Mbps Down/ 3 Mbps Up. Many of these locations are in Priority Unserved areas with speeds less than 10 Mbps Down/ 1 Mbps Up.

Census Blocks in Project Area:

060350406003036

060350406003037

060350406003045

060350406003019

060350406003018

060350406003038

060350406003020

060350406003017

060350406003014

060350406003141

Median Household Income: \$50,179

Anchor Institutions, Public Safety Locations and Businesses:

The project area does not include any anchor institutions, public safety locations or businesses.

Major Infrastructure and Equipment to be Deployed:

- 23.3 Miles of Fiber Optic Cable
- 50 Optical Line Terminals
- 44 Optical Network Terminals
- 1 Above-ground Cabinet
- 1 Cisco management switch
- 1 E7 Chasis
- 1 XGS-PON8 card
- 8 XGS-PON SFPs

Aerial and Underground Installation:

- 7.6 Miles of underground infrastructure
- 15.7 Miles of overhead infrastructure

Cost of Major Infrastructure and Equipment to be Deployed: \$361,636

Estimated Construction Timeline: 18 months

Proposed Broadband Project Plan:

The PST Doyle Broadband Project plans to use fiber optic cable to provide download speeds of up to 1 Gbps and upload speeds of up to 1 Gbps with no data caps.

PST is leveraging its current mid-mile fiber network for which it was awarded ARRA and CASF funds, and existing infrastructure of its parent company, Plumas-Sierra Rural Electric Cooperative to deploy this additional last-mile broadband network to serve the Doyle area of Lassen County.

Plumas-Sierra Telecommunications believes that this last-mile broadband project is categorically exempt from CEQA requirements based on the findings of the CEQA analysis conducted for the previous ARRA grant, and because PST is using existing public utility easements considered previously disturbed. PST believes this project is exempt under CEQA Article 19, Sections 15301 b and 15303 d.

PST is not disputing the Broadband Map depiction of served status.

PST is not seeking Ministerial Review of this project.

The PST Doyle Broadband Project proposes construction of only new last-mile broadband infrastructure. No funding is being requested for mid-mile infrastructure.