

CASF Application – Grapit

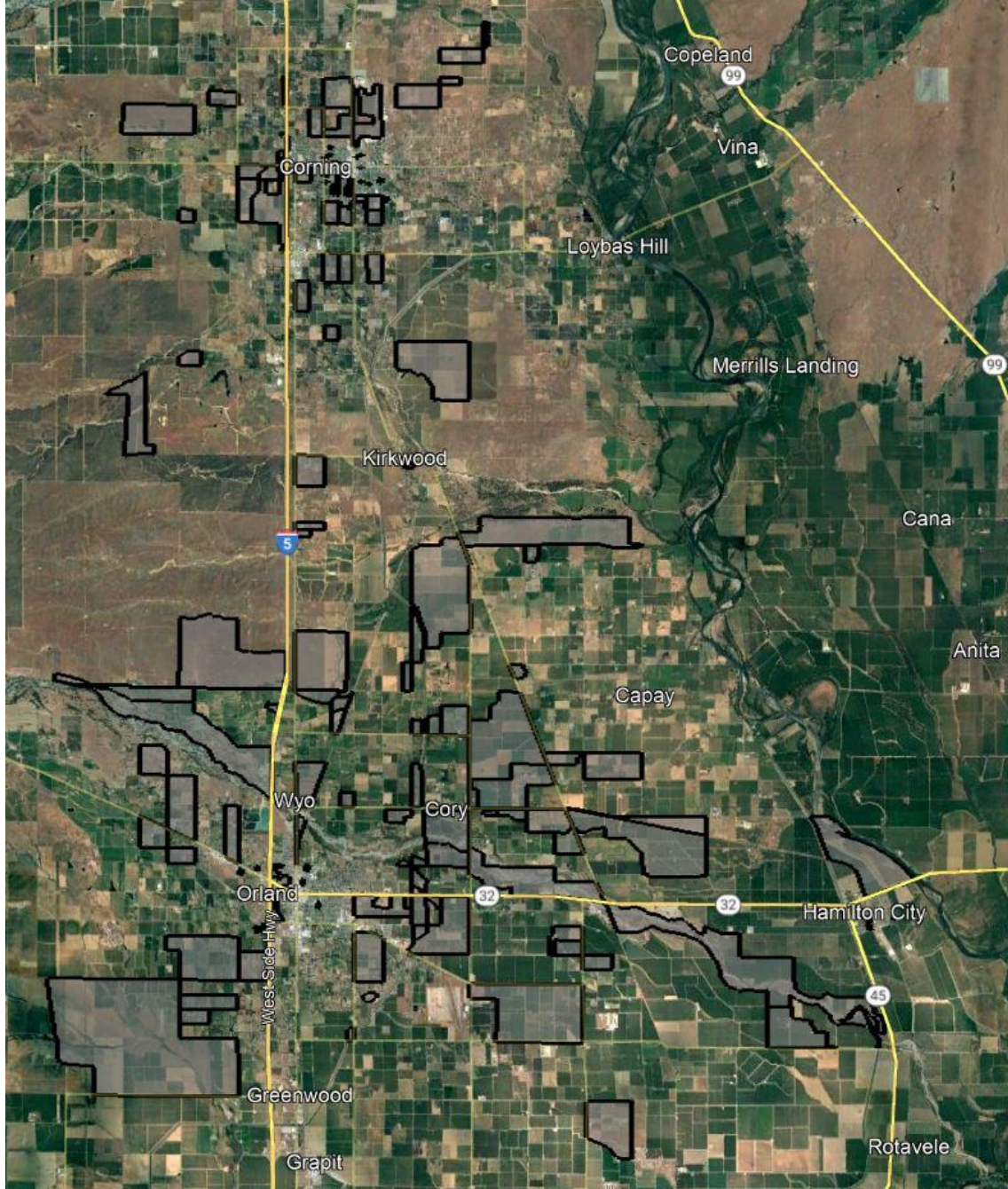
Project Summary

Applicant:	Digital Path, Inc. d/b/a DigitalPath, Inc. #1151
Contact:	Andrew Cardin Senior Vice President of Operations acardin@digitalpath.com
Project Title:	Grapit
Location:	Orland, Hamilton City, Cory, Greenwood – Glenn County Corning, Kirkwood – Tehama County
Type:	hybrid last-mile/middle mile
Grant Funds Requested:	\$1,324,149

Project Area Map



California Interactive Broadband Map – Grapit, Glenn & Tehama Counties



Census Block Boundaries

The Grapit CASF Project will provide service to 302 Priority Eligible locations and 282 Eligible locations. 584 total locations.

Census Blocks:

60210102002026	60210102003011	60210102002056	61030011011062
60210102001006	61030010004054	61030011012087	61030011011039
61030011011032	60210102001025	60210102001005	61030011012085
61030010002059	60210105013024	60210102002045	61030011011067
61030010004106	60210101011011	60210102002062	61030011024056
60210101013004	61030011023045	60210102001026	60210105012021
60210105011057	60210101013013	60210102002000	61030011012009
60210102002027	61030010004029	61030011024059	60210105013039
61030011012005	61030010004099	60210101023033	60210102003023
61030011022022	60210102002034	61030011024020	61030011011042
61030011012003	60210102004039	60210105012044	61030011024055
60210105012022	61030011024043	60210102004012	60210105013006
60210102003009	60210101021005	60210101013012	61030011012072
60210102002080	60210101021006	60210102003012	61030010002092
61030011012001	61030010001035	60210102003014	61030010003017
60210102003010	60210101012000	60210102002074	60210105013051
60210102002023	60210101012031	61030010004031	60210105012035
61030010002066	61030011011060	60210101011033	61030011024060
60210102001003	61030011012015	61030010004005	61030011024027
61030010004103	60210105012036	60210101023001	60210102001021
60210102002040	60210102001008	61030010001041	60210102003025
60210102001024	61030011024037	61030011023007	60210102002012
61030010002010	61030011012002	60210102003029	60210102003035
61030011023039	60210102003004	60210102002063	61030011011014
61030011012036	60210102003022	60210102003033	60210102002017
60210102002066	61030011012093	60210103003018	61030010001034
61030010004071	61030010002079	60210102003006	61030011024028
60210101012021	60210102002018	61030011012084	61030011012020
61030011023025	61030011022011	60210102002068	61030011012091
60210101013016	61030010001042	60210102003026	61030011012043
61030011024034	61030010001044	60210102002075	60210101022045
61030010004086	60210102002069	60210105011044	60210105013021
61030011024032	60210102004003	61030010004080	61030011011011
61030011021002	61030010002087	60210102002010	61030010002078
60210102004036	61030010002106	61030010002091	

Zip Codes:

95951, 95963, 95988, 96021

According to the data available through the California Interactive Broadband Map:

299 locations have access equal to or less than 10 Mbps Down / 1 Mbps Up and 285 locations have access at less than 25 Mbps Down / 3 Mbps Up. This project will make speeds available of 100 Mbps downstream and 20 Mbps upstream.

The median household income of the project area is \$49,668.

There are 10 Community Anchor Institutions identified within the project area. None of these locations are listed as eligible or priority eligible.

There is no major infrastructure proposed in this Project.

The major equipment associated with this project is:

- High-capacity access points, generators, licensed microwave links.

Construction will take less than 18 months to complete.

The Grapit Project is a hybrid last-mile/middle mile fixed wireless deployment utilizing 4 existing towers to deliver service to the households covered by this project.

Once completed, locations covered in this Project will have access to download speeds of 100 Mbps and upload speeds of 20 Mbps. Additional service tiers will be available.

Digital Path, Inc. believes this project to be categorically exempt from CEQA requirements based on the use of existing facilities and local building requirements.

Digital Path, Inc. is not disputing the California Interactive Broadband Map depiction of served status for the locations in this application.

Digital Path, Inc. is not seeking Ministerial Review.

The Middle-Mile component of this project will use licensed microwave links to interconnect the tower sites with an existing fiber connection. The Middle-Mile licensed microwave links are an indispensable part of the project due to the remoteness of the area and lack of available middle-mile connections. DigitalPath, Inc. accepts the open access requirements associated with the middle-mile component of this Project. Once the statewide open-access middle mile network becomes available, it will be connected to.