

CASF Application – Sutter Bypass

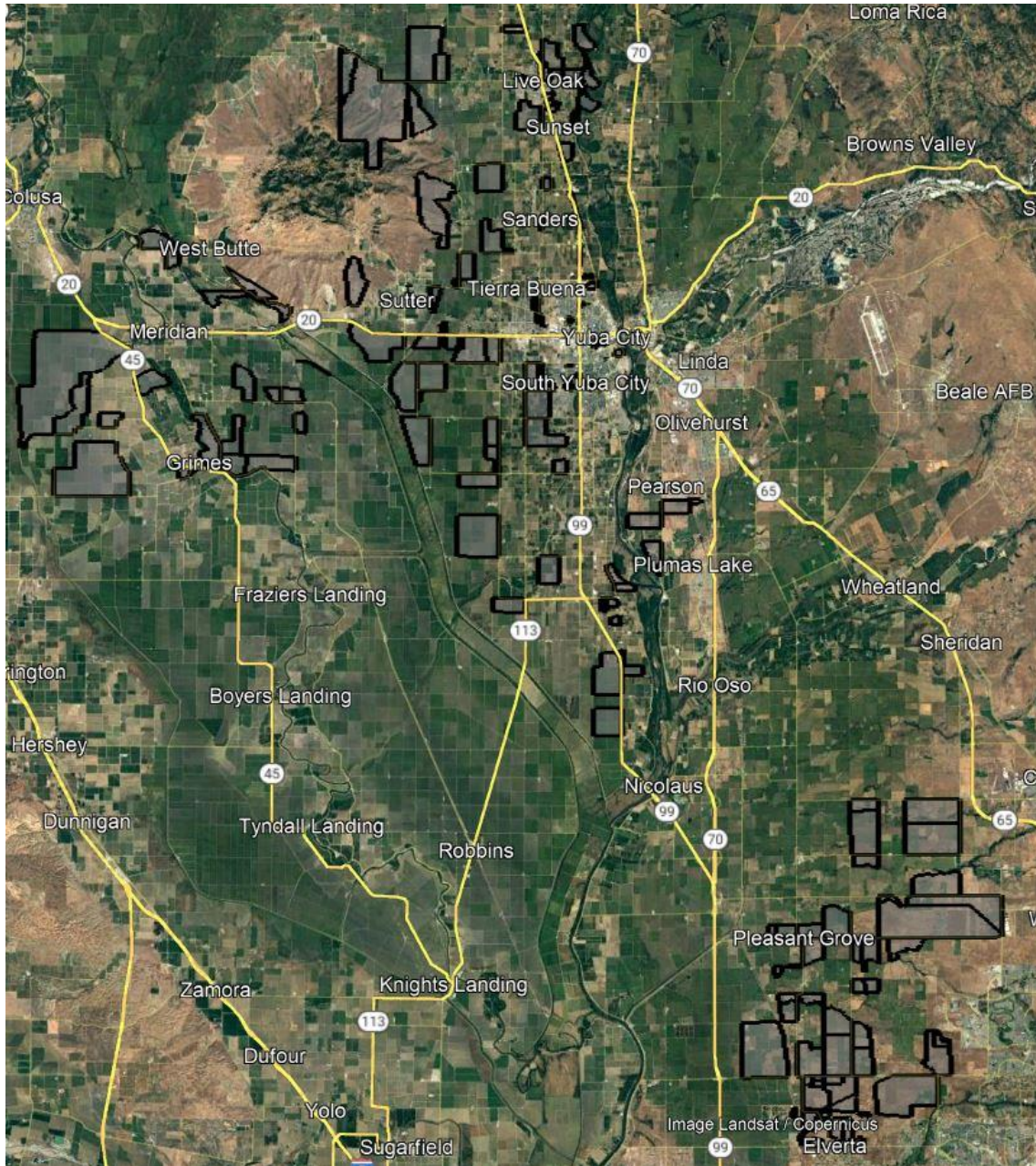
Project Summary

Applicant:	Digital Path, Inc. d/b/a DigitalPath, Inc. #1151
Contact:	Andrew Cardin Senior Vice President of Operations acardin@digitalpath.com
Project Title:	Sutter Bypass
Location:	Live Oak, Yuba City, Sutter, West Butte, Pleasant Grove – Sutter County Grimes – Colusa County Cousman – Placer County Elverta – Sacramento County
Type:	hybrid last-mile/middle mile
Grant Funds Requested:	\$1,410,781

Project Area Map



California Interactive Broadband Map – Sutter Bypass in Sutter, Colusa, Placer & Sacramento Counties



Census Block Boundaries

The Sutter Bypass CASF Project will provide service to 600 Priority Eligible locations and 112 Eligible locations. 712 total locations.

Census Blocks:

61010508002000	61010501015003	61010510002025	61010507022021
60110001001027	61010506031015	60110001001061	61150407012005
61010510002037	61010507011013	60610213281050	61010510002061
61010508001103	61010510002063	60610213285044	61010505031002
61010510001052	60110002005071	60670072062022	61010510002052
61010509001049	61010508002020	60610213271039	61010505034008
61010502011019	61010508001010	60610213271001	60110001001002
61010508001099	61010503012011	60670072061000	61010505041000
61010510002059	61010506031009	60670072062020	61010505031001
61010506031030	61150407012003	60670072061007	61010510002072
61010507011043	61010505042011	60610213285011	61010505035002
61010510002002	61010505035014	60610213281043	60110001001005
61010509001001	61010507011006	60670072062023	61010505033011
60110001001034	61010510001031	60610213271034	61010502024017
61010505011006	61010506031010	60610213271033	61010509001107
61010508001049	61010505034002	60670072062014	61010510001051
61010507021056	61010507012037	61010507022002	61010510001030
61010506031012	61010507012032	61010507024007	61010511003054
61010507021005	61010507012021	61010507024022	61010510002015
61010510002044	61010506031013	61010508001011	61010510001034
61010507021044	61010506031032	61010506031033	61010508001078
60110001001031	61150407021015	61010507012006	61010510002051
61010502023006	61010509001084	61010507011000	61010510001013
61150407023021	61010506032011	61010508001008	61010509001122
61010507021064	61010506031021	61010506012002	61010507012007
61010506031022	60110002005066	61010506031008	61010509001121
60110002005065	61010502011017	61010506014005	61010508001017
61010506041008	61010502023007	61010501011001	61010508001064
61010507011038	61010507012003	61010506031019	60610213285003
61010510002081	61010510001050	61010506011019	61010511003043
61010508001052	61010510001055	61010506031007	61010507023015
61010507022037	60110001001041	61010506031020	60110001001028
61010502021011	61010510002028	61010506031001	60110001001060
61010509001085	61010506031031	61010508001126	61010509001123
61010510002013	61010502021003	61010507011012	61010507011044
61010506031018	60110001001030	61010506031017	61010507011005
61010505042004	61010507022028	61010507022017	61010511003044
61010507024017	61010509001120	61010506031016	61010510001014
61010509001075	61010510002021	61010507012020	60110001001023

60610213271041	60670072061014	61010511003063	61010511003042
60610213271044	60610213285012	60610213271043	61010511003077
60670072062024	60670071011000	60610213281040	60610213281051
60610213285049	60610213271010	60670072061005	61010511003068
60610213285019	61010511003048	61010511003080	61010511003064
60610213285010	60610213285052	60610213271011	61010509001009
60610213271019	61010511003060	60610213271046	60610213271030
60610213271018	60610213271040	60670072062029	
60610213271042	60610213281041	60610213271002	

Zip Codes:

95626, 95648, 95668, 95747, 95912, 95932, 95950, 95953, 95957, 95958, 95991, 95993, 95961

According to the data available through the California Interactive Broadband Map:

384 locations have access equal to or less than 10 Mbps Down / 1 Mbps Up and 328 locations have access at less than 25 Mbps Down / 3 Mbps Up. This project will make speeds available of 100 Mbps downstream and 20 Mbps upstream.

The median household income of the project area is \$63,852.

There are 16 Community Anchor Institutions identified within the project area. None of these locations are listed as eligible or priority eligible.

There is no major infrastructure proposed in this Project.

The major equipment associated with this project is:

- High-capacity access points, generators, licensed microwave links.

Construction will take less than 18 months to complete.

The Sutter Bypass Project is a hybrid last-mile/middle mile fixed wireless deployment utilizing 5 existing towers to deliver service to the households covered by this project.

Once completed, locations covered in this Project will have access to download speeds of 100 Mbps and upload speeds of 20 Mbps. Additional service tiers will be available.

Digital Path, Inc. believes this project to be categorically exempt from CEQA requirements based on the use of existing facilities and local building requirements.

Digital Path, Inc. is not disputing the California Interactive Broadband Map depiction of served status for the locations in this application.

Digital Path, Inc. is not seeking Ministerial Review.

The Middle-Mile component of this project will use licensed microwave links to interconnect the tower sites with an existing fiber connection. The Middle-Mile licensed microwave links are an indispensable part of the project due to the remoteness of the area and lack of available middle-mile connections. DigitalPath, Inc. accepts the open access requirements associated with the middle-mile component of this Project. Once the statewide open-access middle mile network becomes available, it will be connected to.