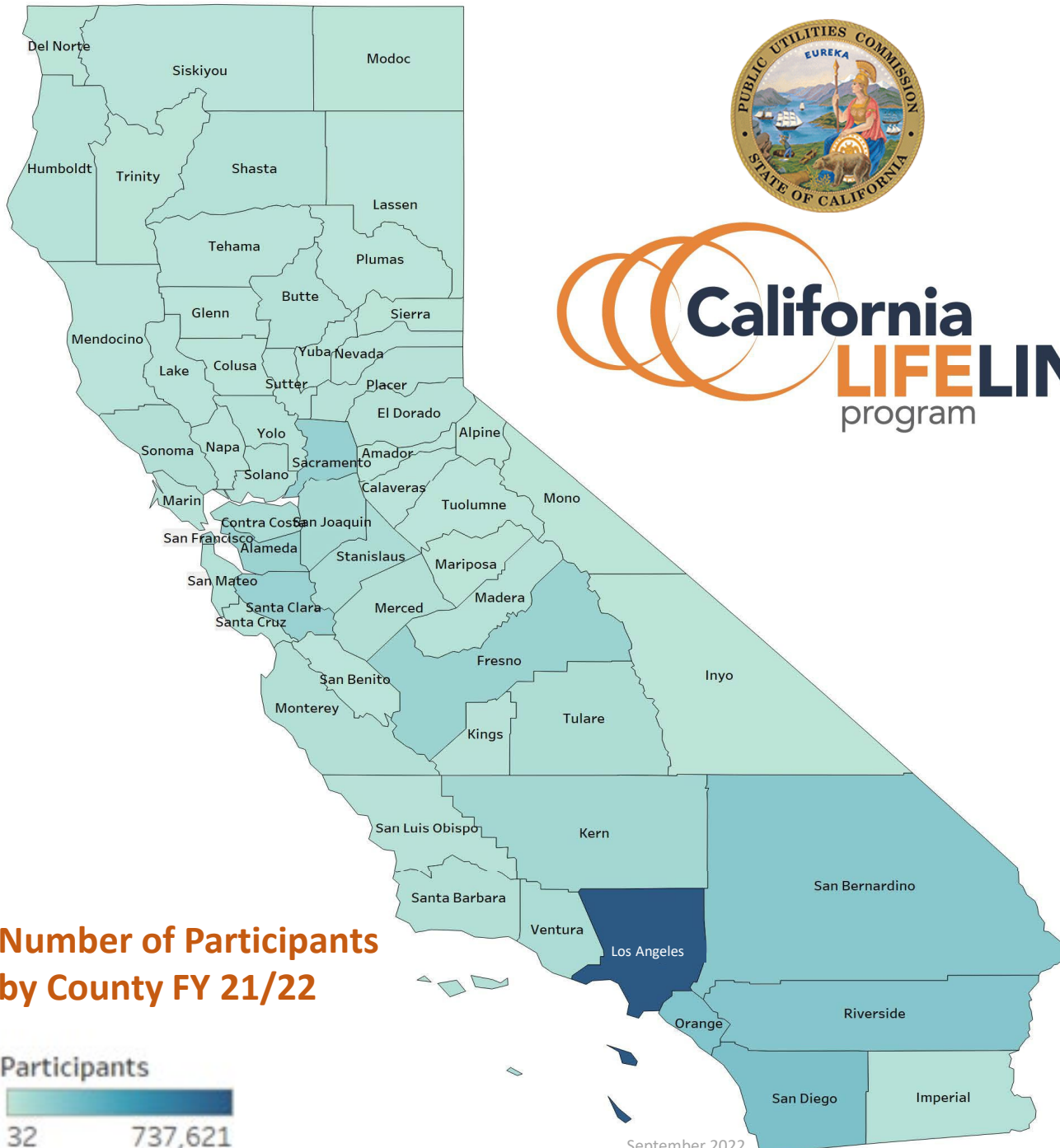
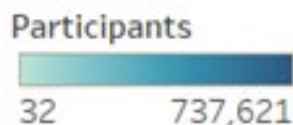


County	Participants
Alameda	79,076
Alpine	32
Amador	1,905
Butte	17,048
Calaveras	2,593
Colusa	1,138
Contra Costa	38,216
Del Norte	2,312
El Dorado	5,573
Fresno	115,447
Glenn	1,866
Humboldt	9,272
Imperial	28,111
Inyo	822
Kern	87,208
Kings	11,098
Lake	6,029
Lassen	1,506
Los Angeles	737,621
Madera	14,367
Marin	4,716
Mariposa	2,033
Mendocino	5,646
Merced	26,194
Modoc	697
Mono	177
Monterey	25,975
Napa	3,238
Nevada	4,307
Orange	153,018
Placer	8,856
Plumas	1,166
Riverside	150,847
Sacramento	131,192
San Benito	2,209
San Bernardino	170,118
San Diego	172,865
San Francisco	72,905
San Joaquin	66,628
San Luis Obispo	6,966
San Mateo	11,381
Santa Barbara	19,109
Santa Clara	76,129
Santa Cruz	12,088
Shasta	14,222
Sierra	180
Siskiyou	4,736
Solano	18,187
Sonoma	13,982
Stanislaus	46,570
Sutter	8,626
Tehama	5,220
Trinity	719
Tulare	40,252
Tuolumne	2,628
Ventura	37,137
Yolo	11,288
Yuba	9,090
Grand Total	2,502,537

Number of Participants by County FY 21/22



PU Code Section 871 *et. seq.* requires the CPUC to promote universal service by making residential service affordable to low-income Californians. This program provides discounts to basic landline and wireless phone service to qualifying low-income residents to help them stay connected.

FY 20/21 Enacted Budget	FY 21/22 Enacted Budget
\$403.5 Million	\$261.7 Million

PROGRAM ELIGIBILITY		Resident is eligible if already enrolled in Medicaid/Medi-Cal, Low Income Home Energy Assistance Program (LIHEAP), Supplemental Security Income (SSI), Federal Public Housing Assistance or Section 8, CalFresh, Food Stamps or Supplemental Nutrition Assistance Program (SNAP), Women, Infants and Children Program (WIC), National School Lunch Program (NSLP), Temporary Assistance for Needy Families (TANF), Tribal TANF, Bureau of Indian Affairs General Assistance, Head Start Income Eligible (Tribal Only), Food Distribution Program on Indian Reservations, or Federal Veterans and Survivors Pension Benefit Program
Household Income Thresholds	Or Categorical Enrollment	
1-2 members	\$28,700	For each additional member, add \$7,300
3	\$33,300	
4	\$40,600	
Each household must choose to get the discount on service for either a home phone or cell phone.		

Discount level
Each program participant receives up to a \$16.23 discount from CA LifeLine in addition up to a \$9.25 discount from Federal LifeLine

Multi-lingual Access
Enrollment process available in:
<ul style="list-style-type: none"> English Spanish Chinese Tagalog Korean Japanese Vietnamese

State operations constitute approximately 11% of total program budget. For more information on California LifeLine: www.californialifeline.com