

**BEFORE THE PUBLIC UTILITIES COMMISSION
OF THE STATE OF CALIFORNIA**

Order Instituting Rulemaking to Establish
Policies, Process, and Rules to Ensure Safe
and Reliable Gas Systems in California and
Perform Long-Term Gas System Planning

Rulemaking 24-09-012

**WEST COAST GAS COMPANY INC. (U 910 G)
MAPPING COMPLIANCE FOR SMALL GAS UTILITIES**

Cynthia Morris, Administrator
WEST COAST GAS COMPANY INC.
9203 Beatty Drive
Sacramento, CA 95826
Telephone: 916-364-4100
Facsimile: 916-364-4200
Email: westgas@aol.com

July 1, 2025

**BEFORE THE PUBLIC UTILITIES COMMISSION
OF THE STATE OF CALIFORNIA**

Order Instituting Rulemaking to Establish
Policies, Process, and Rules to Ensure Safe
and Reliable Gas Systems in California and
Perform Long-Term Gas System Planning

Rulemaking 24-09-012

**WEST COAST GAS COMPANY INC. (U 910 G)
MAPPING COMPLIANCE FOR SMALL GAS UTILITIES**

1) West Coast Gas Company Inc. (WCG) respectfully submits to the California Public Utilities Commission (Commission) its gas utility service area boundaries in compliance with Rulemaking 24-09-012, Ordering Paragraph 3.

Respectfully submitted this 1st Day of July, 2025 at Sacramento, California.

/s/ Cynthia Morris

Cynthia Morris, Administrator

WEST COAST GAS COMPANY INC.

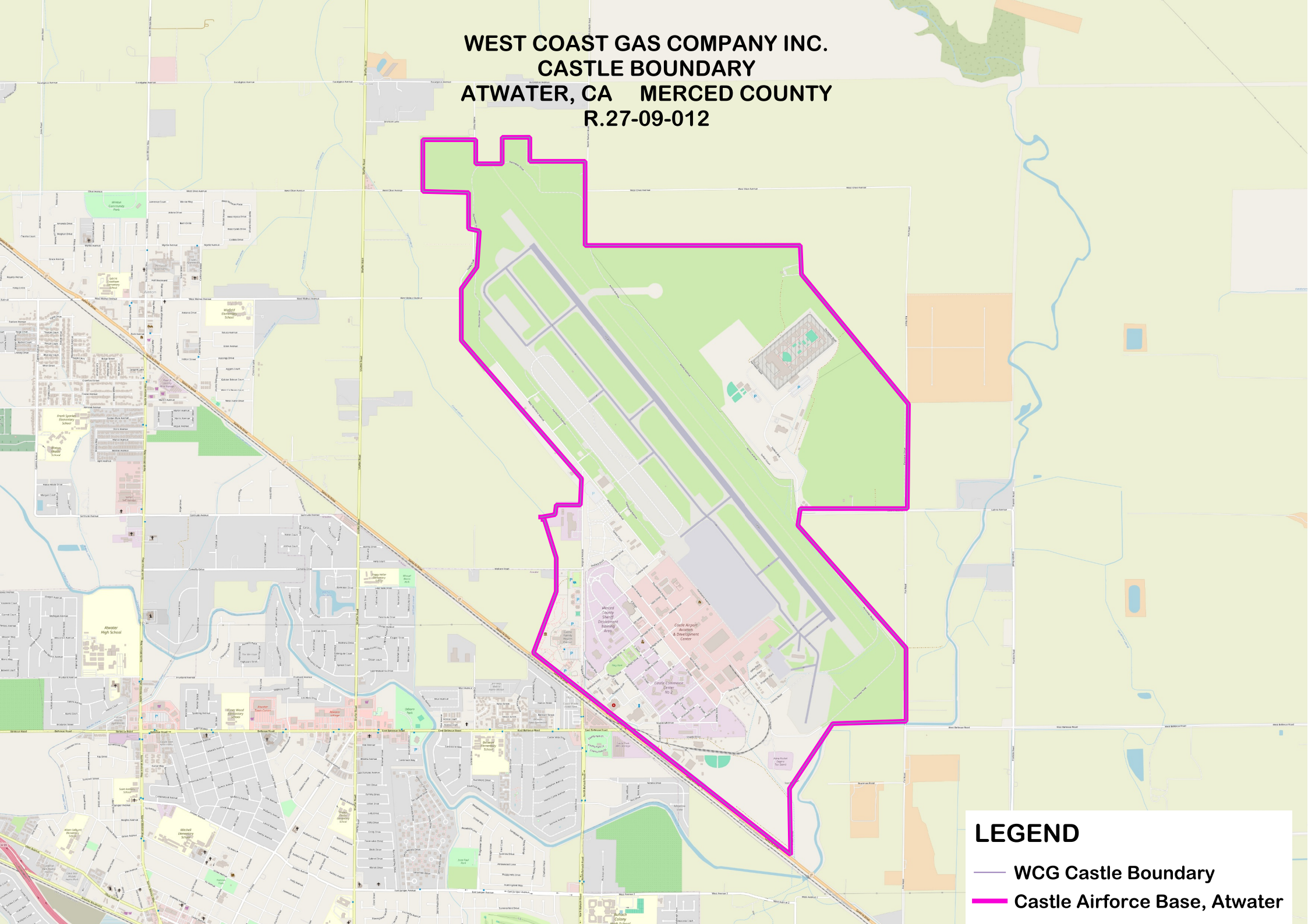
9203 Beatty Drive

Sacramento, CA 95826

Telephone: 916-364-4100

Email: westgas@aol.com

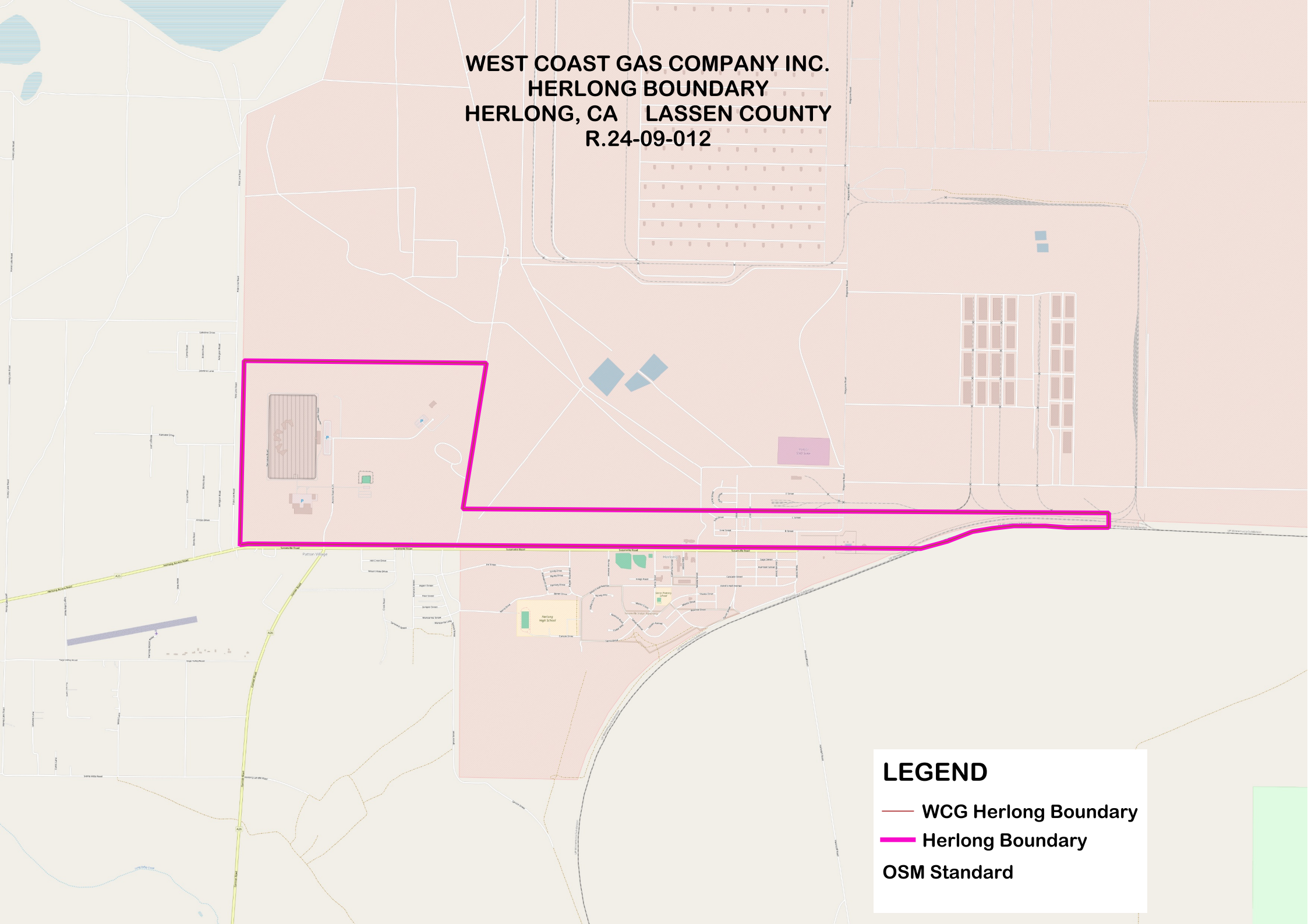
**WEST COAST GAS COMPANY INC.
CASTLE BOUNDARY
ATWATER, CA MERCED COUNTY
R.27-09-012**



LEGEND

- WCG Castle Boundary
- Castle Airforce Base, Atwater

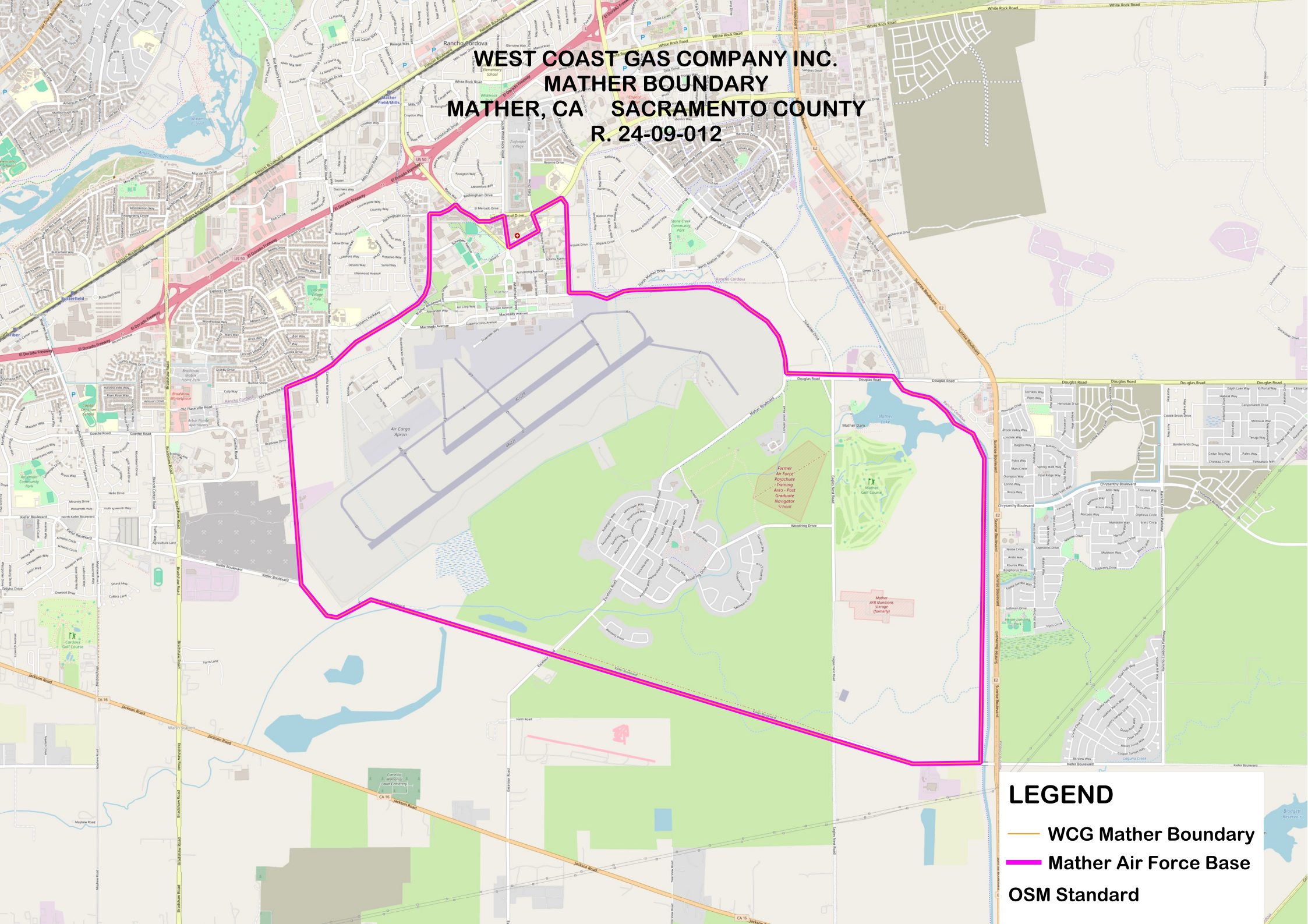
**WEST COAST GAS COMPANY INC.
HERLONG BOUNDARY
HERLONG, CA LASSEN COUNTY
R.24-09-012**



LEGEND

- WCG Herlong Boundary
- Herlong Boundary
- OSM Standard

**WEST COAST GAS COMPANY INC.
MATHER BOUNDARY
MATHER, CA SACRAMENTO COUNTY
R. 24-09-012**



LEGEND

— WCG Mather Boundary

— Mather Air Force Base

OSM Standard