

PUBLIC UTILITIES COMMISSION

505 VAN NESS AVENUE
SAN FRANCISCO, CA 94102-3298



February 23, 2026

SA2025-1423

Daniel Kushner, Senior Director
Electric Risk and Compliance
Pacific Gas & Electric Company (PG&E)
300 Lakeside Dr., Oakland, CA 94612

SUBJECT: Electric Substation Audit of PG&E Concord Headquarters

Mr. Kushner:

On behalf of the Electric Safety and Reliability Branch (ESRB) of the California Public Utilities Commission (CPUC), Gordon Szeto and Monica Hoskins of ESRB staff conducted an electric substation audit of PG&E Concord Headquarters from November 3 through November 7, 2025. During the audit, ESRB staff conducted field inspections of PG&E's substation facilities and equipment and reviewed pertinent documents and records.

As a result of the audit, ESRB staff identified violations of General Order 174. A copy of the audit findings itemizing the violations is enclosed. Please provide a response no later than March 6, 2026, by electronic copy of all corrective actions and preventive measures taken by PG&E to correct the identified violations and prevent the recurrence of such violations.

Please note that ESRB will be posting the audit report and your response to our audit on the CPUC website. If there is any information in your response that you would like us to consider as confidential, we request that in addition to your confidential response, you provide us with a public version (a redacted version of your confidential response) to be posted on our website.

If you have any questions concerning this audit, please contact Gordon Szeto at gordon.szeto@cpuc.ca.gov or (415) 603-9855.

Sincerely,

A handwritten signature in blue ink, appearing to read "Rickey Tse".

Rickey Tse, P.E.
Program and Project Supervisor
Electric Safety and Reliability Branch
Safety and Enforcement Division
California Public Utilities Commission

Enclosure: CPUC Electric Substation Audit Report for PG&E Concord Headquarters

Cc: Lee Palmer, Deputy Executive Director, Safety and Enforcement Division (SED), Safety Policy Division, Water Division, CPUC
Chihsien "Eric" Wu, Program Manager, ESRB, SED, CPUC
Yi Yang, Senior Utilities Engineer (Supervisor), ESRB, SED, CPUC
Stephen Lee, Senior Utilities Engineer (Supervisor), ESRB, SED, CPUC
Gordon Szeto, Utilities Engineer, ESRB, SED, CPUC
Monica Hoskins, Utilities Engineer, ESRB, SED, CPUC
Madonna Ebrahimof, Staff Services Analyst, ESRB, SED, CPUC
Scott Muranishi, Director of Electric Regulatory Compliance, PG&E
Sean Mackay, Director of Investigations, PG&E
Leah Hughes, Manager of Investigations, PG&E
Amber Gregg, Manager of EO Compliance, PG&E
Meredith Allen, VP of Regulatory Affairs, PG&E
Spencer Olinek, Chief Regulatory Liaison, PG&E
Electric Data Requests (ElectricDataRequests@pge.com)
Electric CPUC Regulatory Compliance
(ElectricCPUCRegulatoryComplianceAudit@pge.com)

CPUC SUBSTATION AUDIT FINDINGS
PG&E Concord Headquarters
November 3 – 7, 2025

I. Records Review

During the substation audit, Electric Safety and Reliability Branch (ESRB) reviewed the following standards, procedures, and records for PG&E’s Concord Headquarters (HQ):

- List of all PG&E substations in the Concord HQ
- Map showing all PG&E substations in the Concord HQ
- PG&E Substation Maintenance and Construction (SM&C) Manual, Utility Standard: TD-3322M, Revision 11, with attachments 1 through 12
- PG&E Utility Standard: TD-3328P, Revision 0, with attachments 2 through 4
- PG&E Mobile Substation Equipment – Maintenance and Operating Procedures, Utility Standard: TD-3468P-01, Revision 2, with attachments 1 through 3
- PG&E Substation Equipment Maintenance Requirements, Utility Standard: TD-3322S, Revision 10, with attachments 1 through 13
- PG&E Substation Supplemental Inspection Program, Utility Standard: TD-3328S, Revision 3, with attachment 1
- PG&E Substation Asset Performance Management (APM) Process, Utility Procedure: TD-3320P-36, Revision 1
- PG&E Substation SAP Work Management System (WMS) Process, Utility Procedure: TD-3320P-12, Revision 7, with attachments 2, 4 through 6, 12, and 14
- PG&E Substation Fire Protection Systems and Equipment – Inspection, Test and Maintenance: TD-3320P-07, Revision 3
- PG&E Substation General Work Procedures, Utility Standard: TD-3320S, Revision 2
- Explanation of PG&E inspector training policies
- List of all substation inspections conducted in the last five years for Concord HQ
- List of all open/pending, completed, cancelled, and late work orders and maintenance items in the previous five years (2020-2025)
- Equipment lists for ESRB selected substations
- Single-line diagrams of ESRB selected substations
- Last two visual inspection checklists for ESRB selected substations
- List of transformer banks that operated beyond nameplate capacity for the last five years (2020-2025) for ESRB selected substations.
- Infrared Testing records for ESRB selected substations in the last two years
- Most recent oil sample test results for ESRB selected substations
- Most recent electric test results for ESRB selected substations
- Training records for all substation inspection and maintenance personnel in the past five years (2020-2025)
- Other relevant substation inspections for the past five years (2020-2025) for ESRB selected substations
- Internal audit findings for Concord HQ for the past five years (2020-2025)

II. Records Violations

ESRB observed the following violations during the records review portion of the audit:

1. General Order (GO) 174, Rule 12, General states in part:

“Design, construction and maintenance should be performed in accordance with accepted good practices for the given local conditions known at the time by those responsible.”

a. PG&E Substation Equipment Maintenance Requirements, Utility Standard: TD-3322S¹, establishes PG&E’s required end dates and out-of-compliance dates as follows:

Table 1: Due Dates Per Priority Code

Priority Code	Required End Date	Out-of-Compliance Date
A	Within 30 days	Close notifications after removing the hazard [make safe] with either permanent or temporary repairs within 30 days. Create a new lower priority notification immediately for any remaining work that will exceed 30 days.
B	Within 90 days	The out-of-compliance date is the 1 st day of the 2 nd month following the month in which the required end date occurs.
E	Within 365 days	The out-of-compliance date is the 1 st day of the year following the year in which the required end date occurs.
F	Greater than 365 days	There is no out-of-compliance date. This work will be completed when it is operationally efficient to perform the work.

Based on PG&E Response to Pre-Audit Data Request (DR) Question 13 on Work Notification and Table 1 above, ESRB noted that out of a total of 3,373 Line Corrective (LC) notifications, 4 (0.1%) were closed after their out-of-compliance date. Therefore, PG&E did not perform maintenance in accordance with the accepted good practices described in Utility Standard TD-3322S for these 4 LC notifications. See Table 2 below for the past-due LC notifications.

Table 2: Overdue LC Notifications

Substation	Notification #	Description	Priority	Notification Date	Completion Date	Out of Compliance Date	Days Late
Contra Costa	120117083	TXFR BK3 A PHASE HAS OIL LEAK	B	12/1/2020	5/3/2021	4/1/2021	33
Contra Costa	120117719	TXFR BK3 B HAS PRD FLAG OFFSET	B	12/1/2020	5/3/2021	4/1/2021	33
Contra Costa	120117925	TXFR BK3 C PHASE HAS OIL LEAK	B	12/1/2020	5/3/2021	4/1/2021	33

¹ PG&E Utility Standard TD-3322S, August 3, 2023, Revision 9.

Contra Costa	120117929	TXFR BK3 CPH PRD FLAG OFFSET	B	12/1/2020	5/3/2021	4/1/2021	33
--------------	-----------	------------------------------------	---	-----------	----------	----------	----

b. Based on PG&E Response to DR Question 14 on Equipment Lists on substations selected for the field audit, ESRB noted that the Equipment List for Urich Substation included Switch 85. However, during the field audit, it was observed that Switch 85 was not installed at the substation. PG&E should update the Equipment List record to remove Switch 85 from the Urich Substation.

c. Based on PG&E Response to DR Question 15 on Single Line Diagrams, ESRB noted the following during the field audit:

1) For the Contra Costa Substation, the Single Line Diagram (SLD) shows Transformer Bank 1 Spare is installed. However, the Spare is not actually installed at the Substation. PG&E should update the SLD for Contra Costa Substation.

2) For the Walnut Creek Substation, the SLD shows Transformer Banks 1 and 2 are installed. However, Banks 1 and 2 are no longer at the Substation. PG&E should update the Walnut Creek Substation SLD in Existing LC Tag#131965898 to reflect removal of Transformer Banks 1 and 2.

3) For the Urich Substation, there is an Existing LC Tag#131990529 to add the SLD to the Control Room. During the field audit, a copy of the SLD was found in the Control Room. PG&E should confirm the SLD is up to date and close out the Existing LC Tag on this item.

d. Based on PG&E Response to DR Question 19 on most recent oil samples, ESRB notes that for Circuit Breaker 2107 at Contra Costa Substation, the Lab Remarks on the sample taken on 6/21/2023 stated there were too many large particles in the oil which was an early indication of abnormal wear. It was recommended that a retest of Dissolved Gas Analysis and oil quality be taken in 150 days (5 months) for trending. The retest was completed late, on 12/29/2023, more than 30 days after the recommended 5 months.

e. Based on PG&E Response to DR Question 20 on Most Recent Electrical Tests, ESRB notes there were inconsistencies in how the Circuit Breaker (CB) contact erosion calculations were performed. In accordance with the Electrical Test Records Instructions for Vacuum Circuit Breakers:

The Percentage of Contact Erosion = (100)x(Reference Dimension – Circuit Breaker Closed Measurement)/0.125.

Table 3 shows the percent contact erosion results using the above formula. Some substation circuit breaker contact erosion calculations did not include multiplying by a factor of 100 to give the percent contact erosion (e.g., Fairview CB2207 and Meadow Lane CB2105). Computational errors were noted in some other substations (e.g., Contra Costa CB 2110 and Lakewood CB

2223.) PG&E should review the contact erosion calculations in the Electrical Test records provided in DR 20 and correct any errors found in them.

Table 3: Circuit Breaker Contact Erosion Calculation Results

Substation	Circuit Breaker (CB) #	Reference Dimension (in) Phase			CB Closed Measurement (in) Phase			% Contact Erosion Per Record Phase			% Contact Erosion With Formula Above Phase		
		A	B	C	A	B	C	A	B	C	A	B	C
Clayton	CB2211	3.440	3.440	3.510	0	0	0	0	0	0	2752	2752	2808
Contra Costa	CB2110	0.125	0.125	0.125	0.119	0.119	0.119	9	9	9	4.8	4.8	4.8
Contra Costa	CB2116	1.610	1.550	1.516	1.610	1.550	1.520	0	0	3	0	0	3.2
Fairview	CB2206	0.562	0.562	0.562	0.579	0.547	0.561	13	12.4	1.2	13.6	12	0.8
Fairview	CB2207	1.580	1.600	1.590	1.590	1.590	1.590	0.08	0.08	0	8	8	0
Lakewood	CB2223	1.040	1.040	1.040	1.040	1.040	1.040	30	30	30	0	0	0
Lakewood	CB2224	0.080	0.080	0.080	0	0	0	0	0	0	64	64	64
Lakewood	CB2600	2.212	2.255	2.253	2.190	2.240	2.240	0.19	0.12	0.08	17.6	12	10.4
Lone Tree	CB9	0	0	0	0.092	0.092	0.092	0	0	0	73.6	73.6	73.6
Meadow Lane	CB2105	0	0	0	0.015	0.015	0.015	0.12	0.12	0.12	12	12	12
Meadow Lane	CB2109	2.0312	1.969	2.0312	1.84	1.75	1.90	1.52	1.68	1.04	152	175	105
Pittsburg	CB401	0	0	0	0.017	0.012	0.022	0	0	0	13.6	9.6	17.6

III. Field Inspection

During the field inspection, ESRB inspected the following 17 substations:

Substation	City
Contra Costa Switching Station	Antioch
Marsh Substation	Brentwood
Balfour Substation	Brentwood
Brentwood Substation	Brentwood
Contra Costa Substation	Antioch
Pittsburg Substation	Pittsburg
Kirker Substation	Pittsburg
Lone Tree Substation	Antioch
Clayton Substation	Concord
Walnut Creek Substation	Walnut Creek
Meadow Lane Substation	Concord

Substation	City
Lakewood Substation	Walnut Creek
Moraga Substation	Orinda
Sobrante Substation	Orinda
Christie Substation	Martinez
Urich Substation	Martinez
Fairview	Martinez

IV. Field Inspection – Violations List

ESRB noted the following violations of GO 174, Rule 12 during the field inspection:

GO 174, Rule 12, General states in part:

“...Substations shall be designed, constructed and maintained for their intended use, regard being given to the conditions under which they are to be operated, to promote the safety of workers and the public and enable adequacy of service Design, construction, and maintenance should be performed in accordance with accepted good practices for the given local conditions known at the time by those responsible.”

1. Contra Costa Switching Station

1.1 Circuit Breaker 580 Oil Reservoir B Sample Valve Oil Leak



1.2 Circuit Breaker 580 Hydraulic Oil Leak Existing LC Tag#131965868



1.3 Circuit Breaker 500 B Sample Valve Oil Leak Existing LC Tag#131965860



1.4 Bird Nest Near Circuit Breaker 500 Bus Work, Existing Station Bird's Nest LC Tag#131966674



1.5 Circuit Breaker 570 (Out Of Service) Reservoir C Sample Valve Oil Leak Existing LC Tag#131965864



1.6 Circuit Breaker 400 B Phase Oil Leak Existing LC Tag#131966608



1.7 Bird Nest Near Circuit Breaker 400 Bus Work, Existing Station Bird's Nest LC Tag#131966674



2. Marsh Substation

2.1 Transformer Bank 1A Birds/Wasp Nest in Radiator Existing LC Tag#131956890



2.2 Transformer Bank 1B Birds Nest in Radiator Existing LC Tag#131957160



2.3 Transformer Bank 1C Birds Nest in Radiator Existing LC Tag#131957859



2.4 Transformer Bank 1C Oil Weep Sample Valve Nut Existing LC Tag #131971833



2.5 Transformer Bank 1C Wasp Nest Top Front – Fixed in Field



2.6 Perimeter Fence Gap > 6 inch Existing LC Tag#131956745



2.7 Perimeter Fence Missing Ground Rod at Two Corner Posts



2.8 Transformer Bank 1B Nitrogen Blanket Overpressure Gauge Sight Glass Poor Visibility Existing LC Tag#130852919



2.9 Nitrogen System Replace Valves (Lower Left in Photo) Phase A LC#131956749, Phase B LC#131956981, Phase C LC#131957855 on Small Lines Going to Upper Part of Transformer



3. Balfour Substation

3.1 Switch 27 Motor Operated, Hydraulic Oil Leak/Torn Bellows Existing LC Tag #131965014



3.2 Transformer Bank 1, Nitrogen Bottle No Straps, Inside Enclosure Existing LC Tag#130942608



3.3 Voltage Regulator One Wasp Nest - Fixed In Field



4. Brentwood Substation

4.1 Fan over Battery Rack Not Working Existing LC Tag#131940536



4.2 Annunciator Panel has Alarm Light Activated Existing Capitol Order 74062480



4.3 Circuit Breaker 262 Has Birds Nest Existing LC Tag#131972416



4.4 Observation: Transformer Bank 2 Missing Label For Target Plate Bank Number – Fixed In Field



4.5 Transformer Bank 2 Two Conduits in Cabinet Missing Sealant Around Cables – Fixed In Field



4.6 Transformer Bank 3 Oil Leak Repair Existing LC Tag#131940481 and Load Tap Changer Oil Leak Repair Existing LC Tag#131940434



5. Contra Costa Substation

5.1 Circuit Breaker 282 Faded Counter Existing LC Tag#131777490



5.2 Circuit Breaker 272 Faded Counter Existing LC Tag#131777449



5.3 Capacitor Bank 1 Oil Weep Existing LC Tag #131974721



5.4 Capacitor Bank 1 Bird Nest Existing LC Tag#131966145 Station Bird Nest Tag



5.5 Transformer Banks 1A, 1B & 1C Oil Leak Mitigation Existing Tags LC#131966024, LC#131966026, & LC#131966029. Photo Below is Bank 1C



5.6 Transformer Banks 1A, 1B & 1C No Strap for Nitrogen Bottles. Photo Below is Bank 1C



5.7 Transformer Banks 1A, 1B, 1C Thermal Load Gauges Not Working (Gauge Below Horizontal Green Scaffolding). PG&E plans to fix the issue in Capital Project 74066965 - Transformer Bank 1 Reseal All Phases and Replace Bushings



5.8 Transformer Bank 1C Missing Sealant For Conduit In Main Cabinet – Fixed In Field



5.9 Transformer Banks 2A, 2B, 2C & Spare - Oil Leak Mitigation Existing LC Tags #131966080, 131973784, 131973810, & 131973813. Photo Below is Bank 2A.



5.10 Transformer Banks 3A, 3B, 3C & Spare - Oil Leak Mitigation Existing LC Tags#131973900, 131973901, 131966148, & 131973903. Photo Below is Bank 3A.



5.11 Transformer Bank 3B Temperature Display Monitor (TDM) Replacement Qualitrol Existing LC Tag# 131645481; TDM not working and being replaced with capital job for All Bank 3TDMs on B, C, and Spare Phase PM 74068922



5.12 Transformer Bank 8 Bird Nest Starting in Radiator - Fixed in Field



5.13 Transformer Bank 8 Nitrogen Bottle Only One Strap



5.14 Transformer Bank 9 Bird Nest in Radiator Existing LC Tag#130927057



5.15 Transformer Bank 10 Bird Nest in Radiator Existing LC Tag#130927116



5.16 Voltage Regulator 3 (Currently Out Of Service) Oil Leak Mitigation Existing LC Tag#131966022, Needs Target (Name) Plate Label, Dissolved Gas Analysis Monitor to be Installed as Part of Capital Project



5.17 Substation Yard Light has Exposed Electrical Junction Box Between Transformer Banks 2 and 3 LC Tag#131966285



6. Pittsburg Substation

6.1 Observation: No Obstruction to Trapping Hydrogen Gas, but Vent is Dirty with Cobwebs and Needs to Be Cleaned Existing LC Tag#131943938



6.2 Transformer Bank 1A Fan Not Working Existing LC Tag#131977606



6.3 Transformer Banks 1A, 1B, 1C & Spare Nitrogen Pressure Gauge Faded/Not Accurate Needs to be Replaced Existing LC Tags #131942155, 131942286, 131942414 & 131942416. Photo Below is Bank 1B.



6.4 Transformer Banks 1A & 1B Oil Leak Mitigation Existing LC Tags# 131942159 & 131942289. Photo Below is Bank 1B.



6.5 Transformer Banks 1A, 1B, 1C & Spare - High Side Bushing Oil Gauge Level Not Visible LC Tag# LC131977609. Photo Below is Bank 1 Spare.



6.6 Transformer Bank 1 Ground Bus Molding Is Broken Weathered and Peeling To Be Removed Existing LC Tag#131966679



6.7 Circuit Breaker 401/2 Faded Counter New LC Tag#131977676



6.8 Perimeter Fence Missing Ground Rod on Corner Post New LC Tag#131977807



6.9 Perimeter Fence Signs Posted Inside Fence Existing LC Tag#131942491



7. Kirker Substation

7.1 Transformer Bank 1 Paper Trapped Inside Fan – Fixed in Field



7.2 Transformer Bank 2 Oil Mitigation Clean Oil Residue Existing LC Tag#131964862



8. Lone Tree Substation

8.1 Battery Corrosion Cell 4 Existing LC Tag#131966506



8.2 Battery Room Fan – Need to Perform Demonstration That Fan Works



8.3 Circuit Breaker 2052 Birds Nest Existing Tag for Station Birds Nests LC Tag#131966507



8.4 Transformer Bank 1 Oil Leak Mitigation Existing LC Tag#131966508



8.5 Transformer Bank 2 Fan Not Working Existing LC Tag#131966542, Oil Leak Mitigation Repair Existing LC Tag#131817786



9. Clayton Substation

9.1 Battery Room Vent is Dirty and Needs Cleaning Existing LC Tag#131702284



9.2 Circuit Breaker 112 Birds Nest - Substation Birds Nest Tag LC#131966347



9.3 Transformer Bank 2 Birds Nest Radiator No Existing Tag



9.4 Transformer Bank 2 Loose Strap for Nitrogen Bottle Add to Existing LC Tag#131966289 on Nitrogen System



9.5 Transformer Bank 3 Birds Nest In Radiator Existing LC Tag#131966340



9.6 Transformer Bank 3 Birds Nest Near Nitrogen Bottle – Fixed In Field



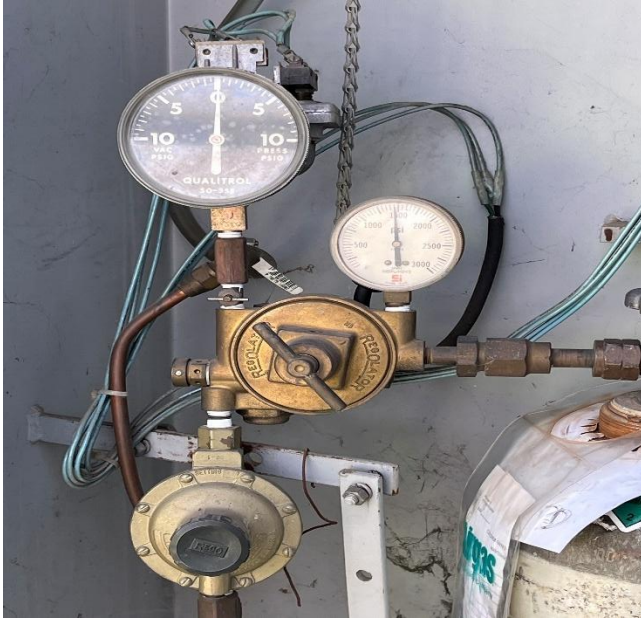
9.7 Transformer Bank 3 Oil Leak Mitigation Existing LC Tag#131980199



9.8 Transformer Bank 5 Need New Target (Name) Plate Existing LC Tag#131055763



9.9 Transformer Bank 5 Nitrogen Pressure Was 0 psig - PG&E Added Nitrogen - Fixed In Field



9.10 Transformer Bank 5 LTC Velcon Filtration Unit Oil Leak and Clean Oil Residue Hose Issue Existing LC Tag#131966348



9.11 Transformer Bank 5 Oil Leak Mitigation Existing LC Tag#131966349



9.12 Transformer Bank 5 Nitrogen System Repair Possible Minor Leak Existing LC Tag#131966342 (Came and Replaced Tubing Where Leak Was & Now Monitoring)



9.13 Transformer Bank 6 Live Front Auto Transformer, Did Not Open, Replace Oil Sample Valve Existing LC Tag#131195947



9.14 Circuit Breaker 1103/2 – Cracked Counter Sight Glass Needs Replacement (Possibly Replace CB Looking for Capital Project)



9.15 Circuit Breaker 1103/2- Oil Mitigation and Cleanup Existing LC Tag#131966446



9.16 Under Ground Equipment Box Cover Near CB 1104/2 Was Loose and Not Secured -
Leveled and Secured In Field



10. Walnut Creek Substation

10.1 Transformer Bank 4 Oil Residue Cleanup Existing LC Tag#131945896



10.2 Transformer Bank 3 Oil Residue Cleanup Existing LC Tag#131945820



10.3 Vegetation Management – Trees With Large Branches Overhanging Inside Substation
Existing Vegetation LC Tag#131965974 for Trees Close to Fence Line



11. Meadow Lane Substation

11.1 Battery Corrosion Existing LC Tag#131965138



11.2 Circuit Breaker 112 Two Birds Nests, No Existing Tag Created New LC Tag#131982951



11.3 Circuit Breaker 2103/2 Repair Heater and Clean Up Cabinet Existing LC Tag#131965570, Oil Clean Up Existing LC Tag#131980197



11.4 Transformer Bank 1 Oil Mitigation Leak Repair and Residue Cleanup Existing LC Tag#131965139



11.5 Transformer Bank 2 Oil Mitigation Residue Clean Up Existing LC Tag#131980258



11.6 Transformer Bank 3 Oil Mitigation Residue Clean Up Existing LC Tag#131980352



12. Lakewood Substation

12.1 Transformer Bank 1 Fan Conduit Faded and Cracked Existing LC Tag#131966631



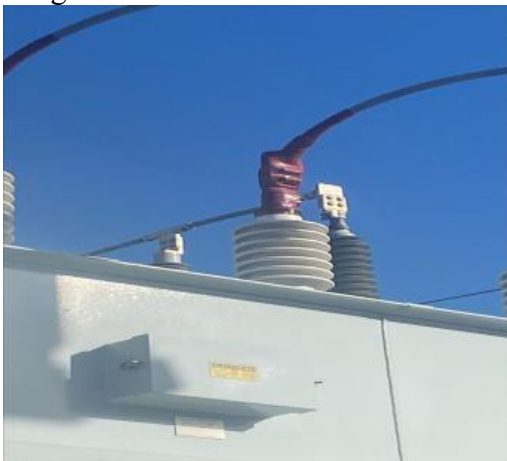
12.2 Transformer Bank 1 Oil Leak at Brass T Sample Valve Existing LC Tag#131900171



12.3 Transformer Bank 2 Oil Mitigation LC Tag#131984271



12.4 Transformer Bank 3 Oil Mitigation Clean Residue Near Nitrogen Cabinet Existing LC Tag#131966871, Animal Abatement B Phase Low Side
Rewrap Insulator Gap Existing LC Tag#131966959, Clean Oil Residue from Radiator Existing LC Tag#131967393



12.5 Transformer Bank 4 Reinhausen Unit Half of Fans Don't Work, Being Replaced Next Year, Capital Replacement Project 74064196



12.6 Transformer Bank 5 Nitrogen Cabinet Needs Sign Removed - Fixed in Field



12.7 Transformer Bank 6 Paper Tag in Radiator - Fixed in Field, General Oil Mitigation Existing LC Tag#131966895, Active Oil Leak Top Fill Valve LC Tag#131899391



12.8 Transformer Bank 7 Broken Radiator Fans, Middle Right and Top, Bottom Right for Other Radiator, 3 Total Fans Out Existing LC Tag#131985642



12.9 Transformer Bank 7 Faded High Voltage Labels on Bank 7 and Switch Gear Existing LC Tag#131967225



13. Moraga Substation

13.1 Observation: No Ventilation Fan for Batteries in Control Room. Have Windows but No Specific Ventilation Plan. Building is Large Enough with Volume to Allow Hydrogen to Disperse as Needed. LC to get engineering to look at venting situation. No current safety issue.



13.2 Circuit Breaker 372 Faded Counter, No Existing Tag, Created New LC Tag#131986539



13.3 Oil Circuit Breaker 642 Capital Job PM 74064861 to Replace With SF6 Breaker



13.4 Circuit Breaker 1100 Faded Semaphore Will Add Sticker - Fixed in Field



13.5 Transformer Bank 1 One Fan Not Working Existing LC Tag#131702282



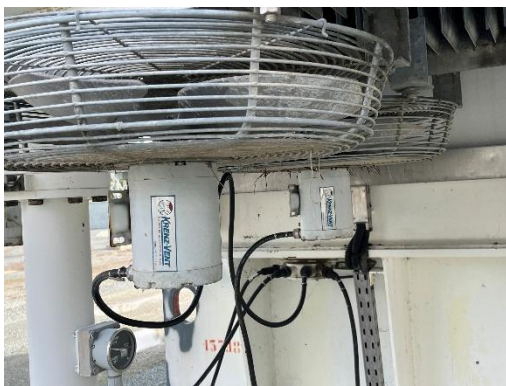
13.6 Transformer Bank 2 Oil Mitigation Tag LC 131984261, Small Piece of Tape in Radiator - Removing Fixed in Field, Birds Nest in Radiator



13.7 Transformer Bank 3 Oil Mitigation - A Phase Existing LC Tag#131984263, B Phase LC Tag#131984264, C Phase LC Tag#131984265, Spare LC Tag#131984269; Transformer Bank 3 Birds Nest For A Phase, B Phase, C Phase and Spare Are on Existing LC Tag#131984262. Photo Below Bank 3 Spare.



13.8 Transformer Bank 3 -Three Fans Not Working, No Existing Tag, New LC Tag#131986658



14. Sobrante Substation

14.1 Circuit Breaker 282 Transmission Oil Breaker, Existing LC Tag #131966209 to Paint Breaker, Open Semaphore is Faded



14.2 Wildfire Defensible Space - Observation: Grass is about 2 to 3 Feet Tall Within the 30 Foot Clean Zone. Did Last Defensible Space Trimming in March 2025.

Will put in Preventative Maintenance Tag#131990307 now so that it has the potential to be done earlier 2026 but they have the whole year to complete trimming per Defensible Space standards.



14.3 Transformer Bank 1 Status: Capital Replacement Project for 2027 to Replace The Entire Bank



14.4 Transformer Bank 1 A Phase Status: Out of Service, Never to be Operated Again, Spare Will be Operated in Place of Phase A



14.5 Transformer Bank 1 B Phase Birds Nest Existing LC Tag#131966301



14.6 Transformer Bank 1 C Phase Fans and Oil Pump Not Working Existing LC Tag#13187150



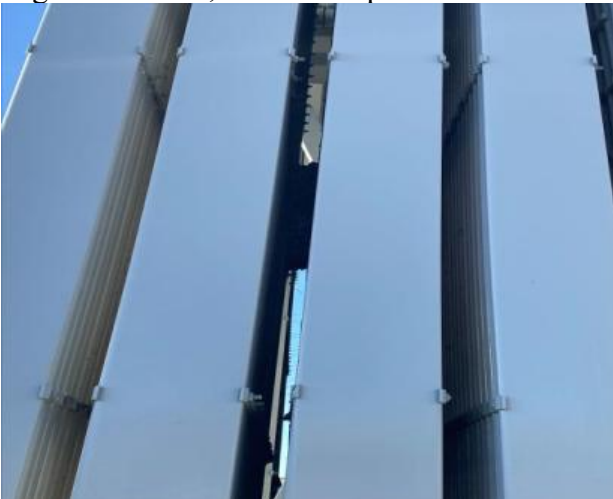
14.7 Transformer Bank 1 Spare Birds Nest in Radiator Existing LC Tag#131984277, Oil Mitigation LC 131966305, Fans Not Working LC 131987155



14.8 Transformer Bank 2 Bird Droppings Existing LC Tag#131966309



14.9 Voltage Regulator 1 Oil Leak Mitigation Existing LC Tag#131966575, Birds Nest LC Tag#131966574, Will Be Replaced with Transformer Bank 1 Capital Job



15. Christie Substation

15.1 Battery Room - Need to Demonstrate Exhaust Fan is Operational New LC Tag#131989888



15.2 Circuit Breaker 1232 Birds Nest Existing LC Tag#131961605 and Station Birds Nest Existing LC Tag#131990024



15.3 Circuit Breaker 72 Birds Nest Existing LC Tag#131964230



15.4 Transformer Bank 1 A Phase Birds Nest - Fixed in Field



15.5 Transformer Bank 1 B Phase Oil Mitigation Existing LC Tag#131990028



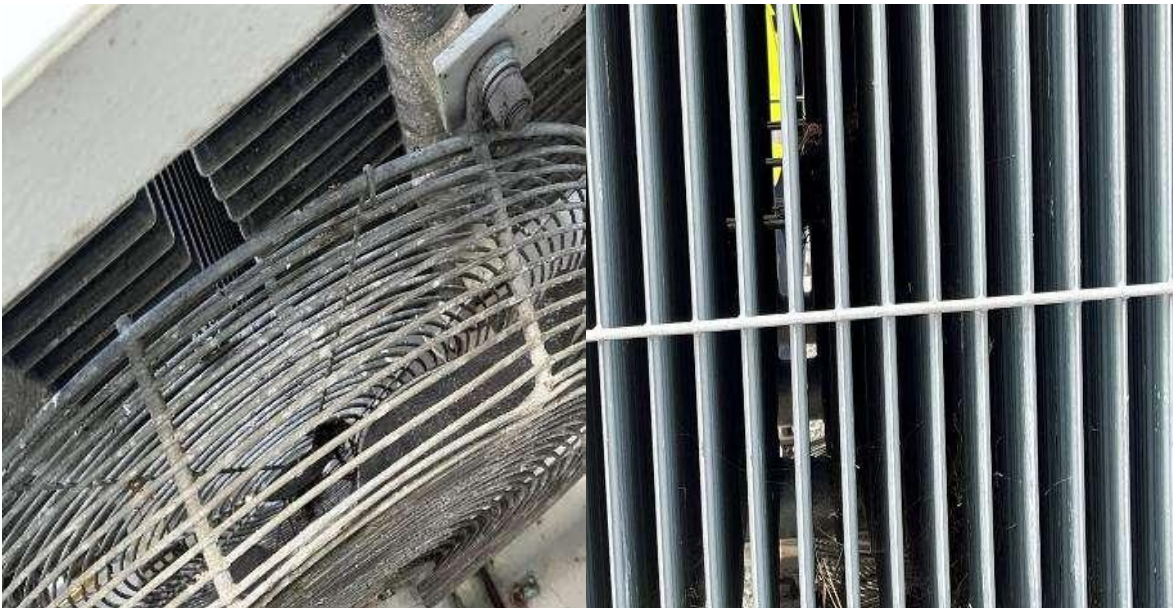
15.6 Transformer Bank 1 C Phase Oil Mitigation Existing LC Tag#131990131



15.7 Transformer Bank 1 Spare Oil Mitigation Existing LC Tag#131990134



15.8 Transformer Bank 2 Oil Mitigation Existing LC Tag#131990135, Fan Not Working Existing LC Tag#131961741, Birds Nest Existing LC Tag#131963096



15.9 Voltage Regulator 1 Desiccant Replacement Existing LC Tag#131963348, Oil Mitigation Issues Conservator Tank LC Tag#131963436, Birds Nest LC Tag#131963939



16. Urich Substation

16.1 Transformer Bank 1 Needs to Be Painted Existing LC Tag#131953586



16.2 Transformer Bank 1 Oil Mitigation: A Phase Existing LC Tag#131329613, B Phase LC 131990614, C Phase LC 131990615, Spare LC 131949888. Photo Below is C-A Phase.



16.3 Perimeter Fence Needs Ground Rod on Corner Post Next to Control Room. Will Add to Existing Tag to Repair Fence Grounds in LC Tag#131990525



17. Fairview Substation

17.1 Capacitor Banks – Rust Banks 1 and 2 Existing LC Tag#131953978 and Banks 3 and 4 Existing LC Tag#131955704



17.2 Capacitor Banks - Oil Leak Banks 3 and 4 Existing LC Tag#131955490; Status – PG&E Assessing Removal of All Capacitor Banks



17.3 Transformer Bank 5 - Main Control Cabinet Missing Light Covers and Indicators, Annunciator Tag for All Phases Existing LC Tag#131956205. Photo Below is Bank 5 B Phase Control Cabinet.



17.4 Transformer Bank 5 Birds Nests A Phase LC Tag#131956200, Near H1 Air Switch LC Tag#131956165, C Phase LC Tag#131990226. Photo Below is Birds Nest Near H1 Air Switch.



17.5 Transformer Bank 5 – Oil Mitigation A Phase LC Tag#131953638, B Phase LC Tag# 131953656, C Phase LC Tag#131990229, Spare LC Tag#131990356. Photo Below is Bank 5 Spare.



17.6 Nitrogen System - Operational But Old, Being Upgraded: A Phase LC Tag#131953727, B Phase LC 131953729, C Phase LC 131953975, Spare LC 131953723. Photo Below is Bank 5 Spare.



17.7 Voltage Regulator 6 Oil Mitigation Existing LC Tag# 131956054

