

APPENDIX 3 – COMPRESSOR EMISSION MEASUREMENT FREQUENCY

Quarterly Measurements for the Compressor Stations
2021 Winter Workshop (R. 15-001-08)— January 22, 2021



OVERVIEW OF COMPRESSOR EMISSION MEASUREMENT FREQUENCY

- » There are 82 compressor units in the SoCalGas system
 - 44 Storage facility units
 - 38 Transmission facility units
- » Vented emissions are currently measured on each unit annually under CARB Oil & Gas Rule
- » SED has recommended measurements be taken quarterly
- » Measuring emissions on every unit quarterly would require additional resources and funding

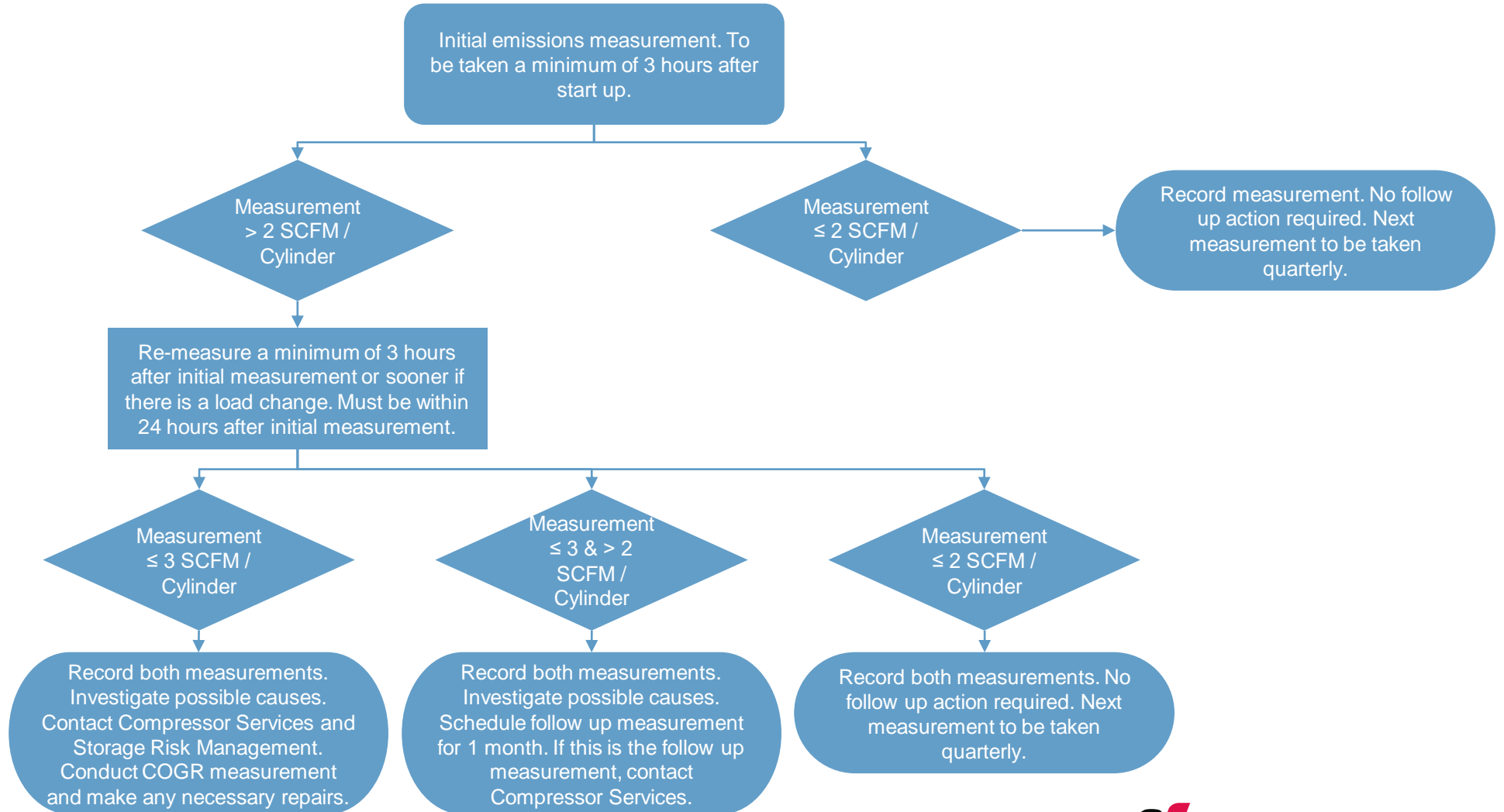
Quarterly Measurement for Compressor Stations Development

- » **Objective:** Determine impact of quarterly compressor measurements compared to annual compressor measurements for potential full implementation across all units
- » **Milestone Reached:** Pilot facilities have been selected, schedule, cost and procedure have been developed
- » **Next Step:** Conduct measurements quarterly throughout 2021; analyze results, and assess feasibility of implementation in Q4 2021; formally propose next steps in 2022 Compliance Plan

Quarterly Measurement for Compressor Stations

- » **Personnel:** Primarily SCG or SDGE Technicians
- » **Instrument:** Small commercial rotary meter (8C-15 or similar)
- » **Frequency:** Quarterly (4 total measurements per year)
- » **Duration:** ≤ 2 minutes
- » **Response:** Conduct an evaluation within 30 days when a reciprocating compressor emission flow rate is greater than 2 scfm/cylinder. Depending on the results of an evaluation, repairs may be conducted. (Note: An evaluation procedure is being developed by Compressor Services.)

Quarterly Measurement for Compressor Stations



Questions?