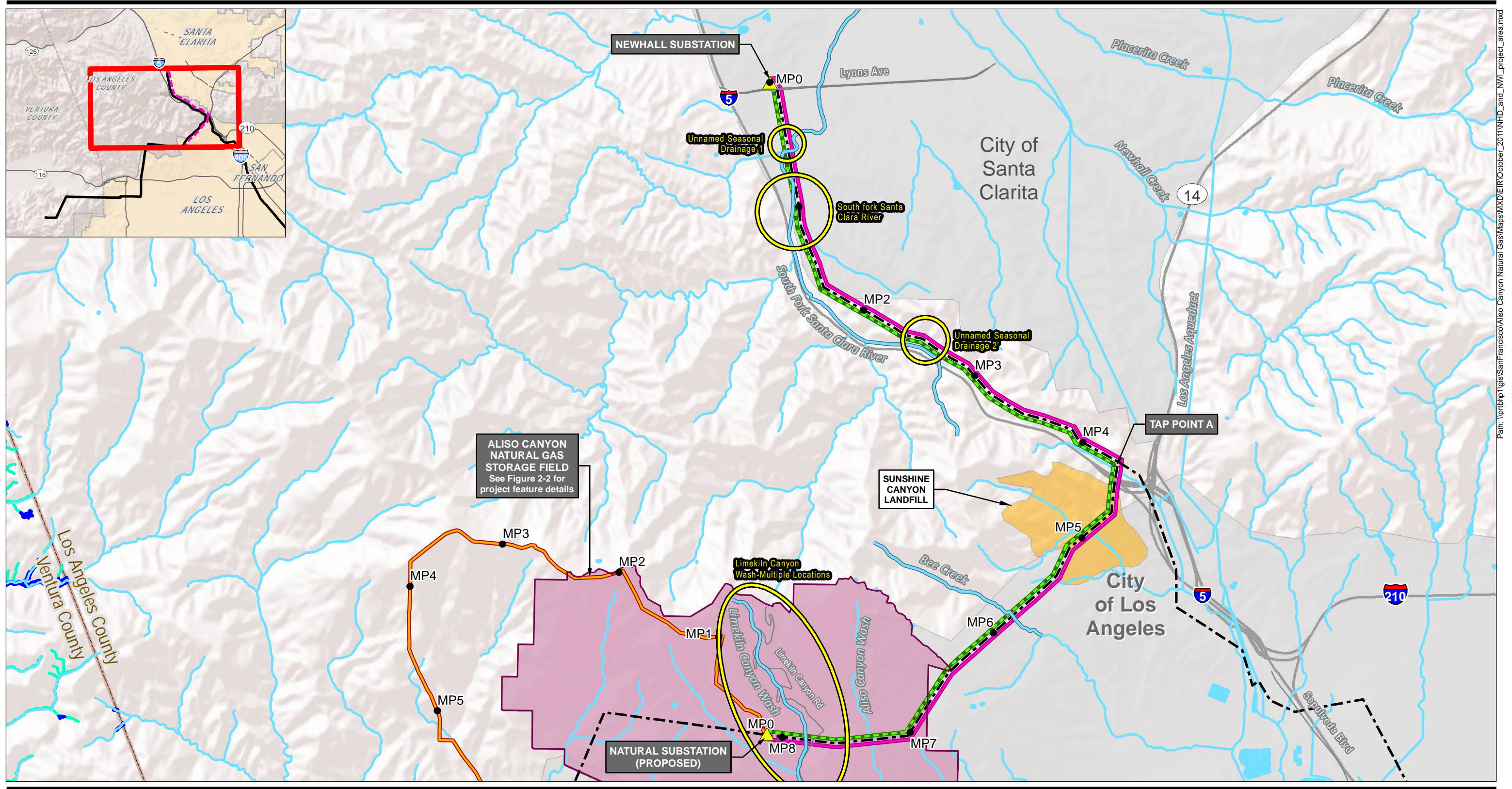


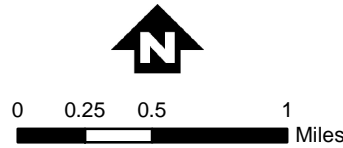
***Appendix F
Additional Biological Resources Maps and
Figures (F1 and F2)***

This page intentionally left blank



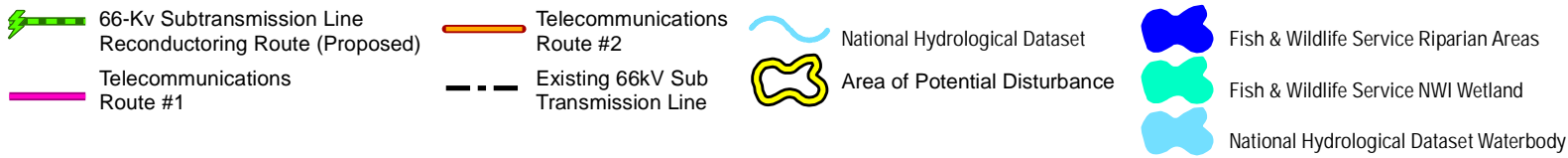
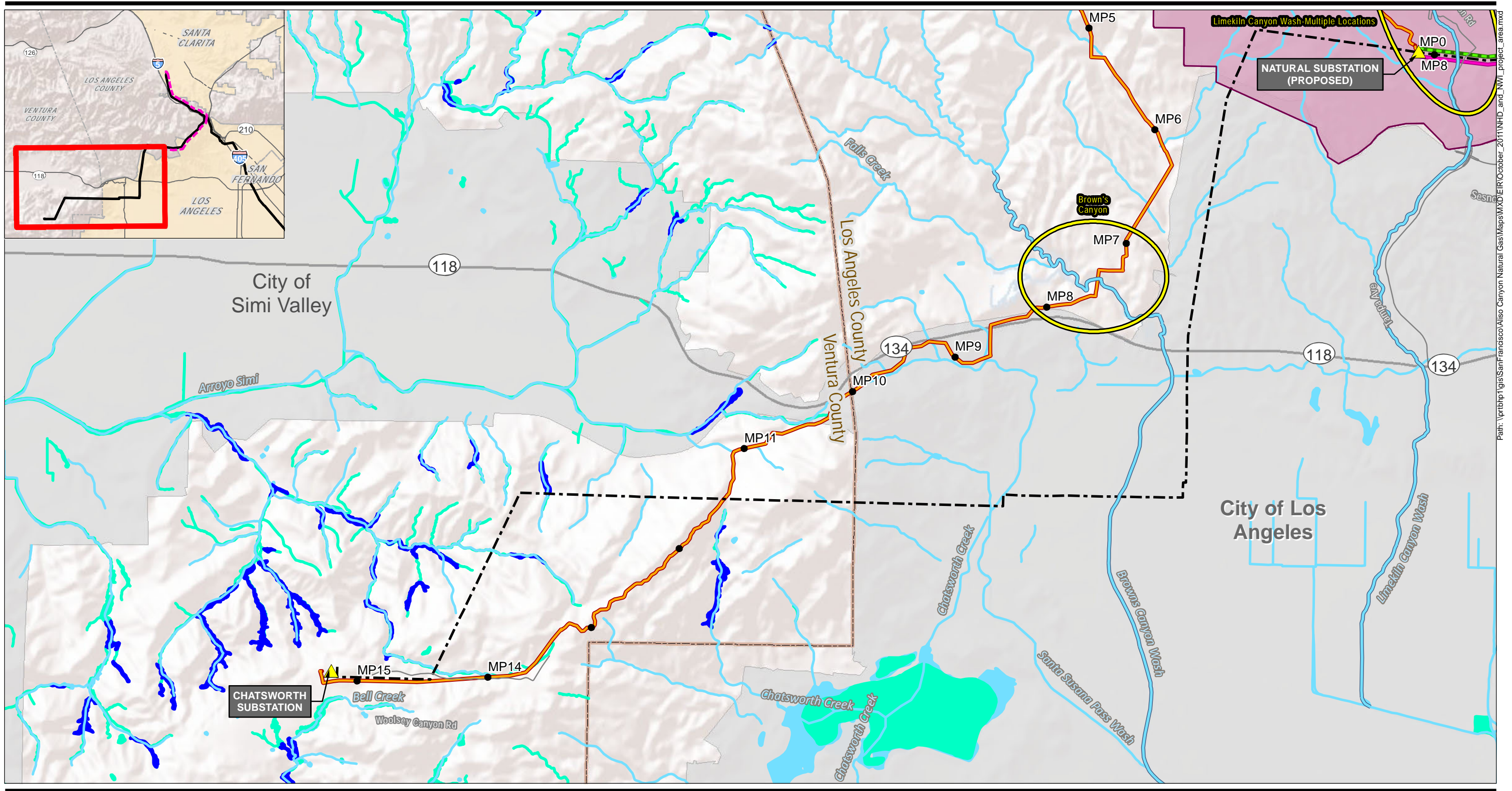
- 66-Kv Subtransmission Line Reconductoring Route (Proposed)
- Telecommunications Route #2
- Telecommunications Route #1
- Existing 66kV Sub Transmission Line
- National Hydrological Dataset
- Area of Potential Disturbance
- Fish & Wildlife Service Riparian Areas
- Fish & Wildlife Service NWI Wetland
- National Hydrological Dataset Waterbody

Note: Where subtransmission lines and telecommunications routes are parallel, they are shown offset for graphical purposes only. The lines would be co-located overhead on the same structures.



Appendix F-1
**Wetlands and Hydraulic Features
 Along Telecommunications Route #2**

Path: \\prb\p1gis\SanFrancisco\Aliso Canyon Natural Gas\Map\MapXD\EIR\October_2011\NHD_and_NWI_project_area.mxd



Note: Where subtransmission lines and telecommunications routes are parallel, they are shown offset for graphical purposes only. The lines would be co-located overhead on the same structures.



Path: \\prtblp1gis\SanFrancisco\Aiso Canyon Natural Gas\Maps\MXD\DIR\October_2011\NHDI_and_NWI_project_area.mxd