



# — Import Capability and Out of State Wind



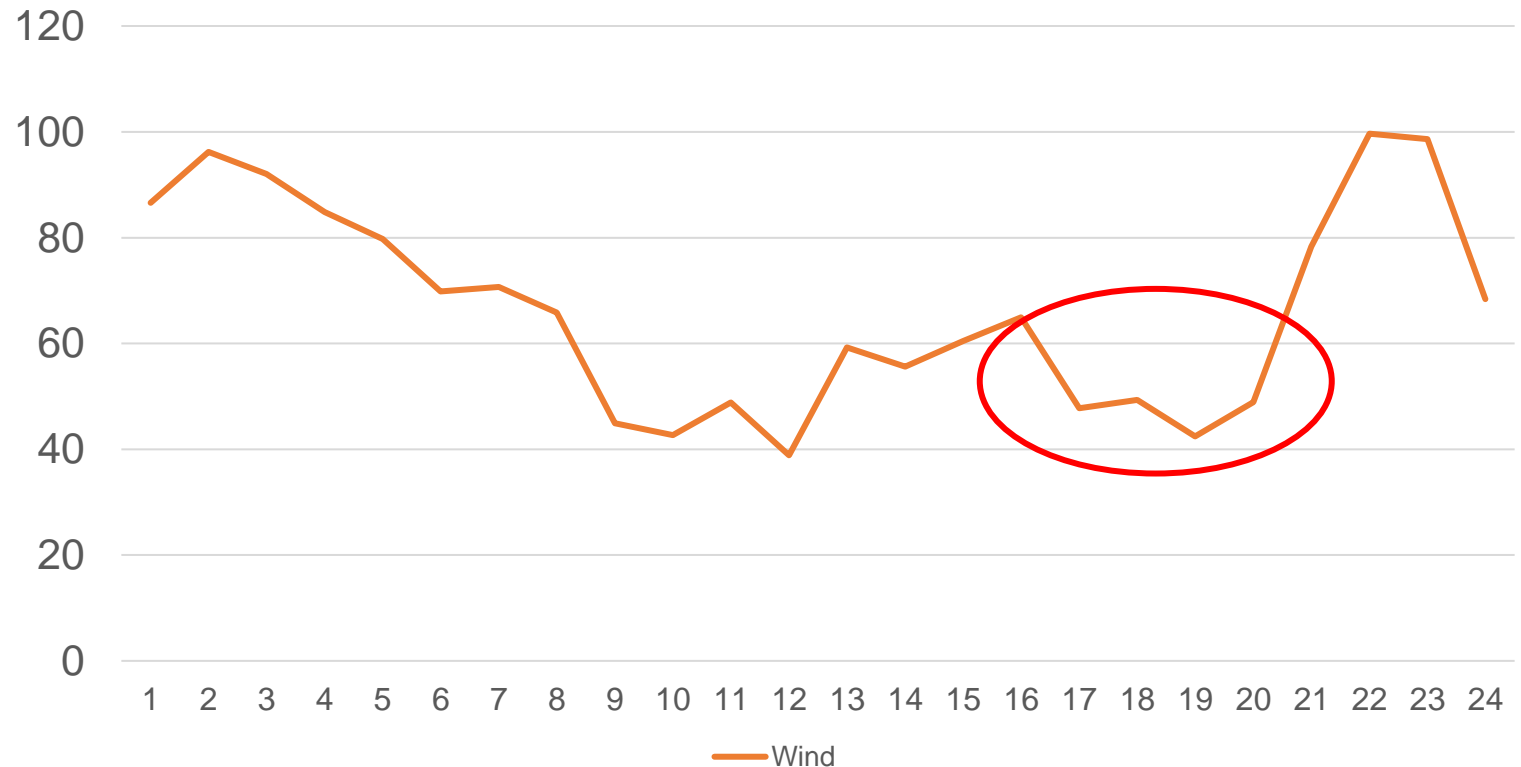
# Import Capability and Out of State Wind

Are Deliverability assessments at the hourly level necessary to determine an LSE's Import Capability?

## Hypothetical Out of State Wind Resource

- Nameplate: 200 MWs
- August 2022 ELCC: 21%
- August NQC: 42 MWs
- Max of Gen Profile: ~99 MWs (HE 2, 22, 23)
- Current RA Framework Import Capability Requirement for Wind RA: 42 MWs
- 24 Hour Slice Framework Import Capability Requirement: 99 MWs?
- How will import capability volumes be decided for 24 Hour Slice reform?

Hypothetical Wind Profile 200 MWs Nameplate (August)



## How do we determine RA from Out of State Imports without ELCC?

- Resource specific imports will need to know what Import Capability MW value they need to secure
- How do we transition MIC to Slice of Day?
  1. Max of Slice of Day MW Output
  2. MWs at the Peak Load Slice
  3. 25<sup>th</sup> Value (based on elcc?)
- Does Max Slice of Day targets cause MIC scarcity during peak when it is most needed
- Setting exceedance levels may cause an over or under allocation of LSE import capability depending on the level that is set